

Product datasheet for RC201158

NOL12 (NM_024313) Human Tagged ORF Clone

Product data:

Product Type:	Expression Plasmids
Product Name:	NOL12 (NM_024313) Human Tagged ORF Clone
Tag:	Myc-DDK
Symbol:	NOL12
Synonyms:	dj37E16.7; Nop25
Mammalian Cell Selection:	Neomycin
Vector:	pCMV6-Entry (PS100001)
E. coli Selection:	Kanamycin (25 ug/mL)
ORF Nucleotide Sequence:	>RC201158 ORF sequence Red=Cloning site Blue=ORF Green=Tags(s)

TTTTGTAATACGACTCACTATAGGGCGGCCGGAATTCGTCGACTGGATCCGGTACCGAGGAGATCTGCC
GCC**CGATCGCC**

ATGGGCCGAACAAGAAGAAGCGAGATGGTGACGACCGGGCCGAGGCTCGTTCTTAGCTTCGACG
AGGAGAAGAGGGCGGAGTACCTGACAGGCTTCCACAAGCGGAAGGTCGAGCGAAAGAAGGCAGCCATTGA
GGAGATTAAGCAGCGGCTGAAAGAGGAGCAGAGGAAGCTTCGGGAGGAGCGCCACCAGGAATACTTGAAG
ATGCTGGCAGAGAGAAGAGGCTCTGGAGGAGCAGATGAGCTGGACCGTTGGTGACAGCAAAGACGG
AGTCGGTGCAGTATGACCACCCCAACCACACAGTCACCGTGACCACCATCAGTGACCTGGACCTCTCGGG
GGCCCGGCTGCTCGGGCTGACCCACCTGAGGGAGGGGCTGGAGACAGGTCTGAGGAGGAGCGTCATCC
ACGGAGAAACCAACCAAGCCTTGCCCAGGAAGTCCAGAGACCCCTGCTCTCAGCGGATCTCCTCCC
TCACAGCATCACTACATGCACACAGCCGAAAAAGGTCAAGAGGAAACATCCCGACGGGCCAGGACTC
CAAAAAGCCCCAAGGGCCCTCGTACCAGCAAGGCCAGCGCCCGCTCTCACAGGCAAAGCACGGCAC
AGCGGGGAG

ACGCGTACGCGGGCGCTCGAGCAGAACTCATCTCAGAAGAGGATCTGGCAGCAAATGATATCCTGGATT
ACAAGGATGACGACGATAAGGTTTAA



[View online »](#)

Protein Sequence: >RC201158 protein sequence
Red=Cloning site Green=Tags(s)

MGRNKKKKRDGDDRRPRLVLSFDEEKRREYLTFGFKRKVERKAAIEEIKQRLKEEQKLRERHQEYLK
 MLAEREEALEEAEDELDRLVTAKTESVQYDHPNHTVTVTIISDLDLSGARLLGLTPPEGGADRSEEEASS
 TEKPTKALPRKSRDPLLSQLISSLTASLHAHSRKKVKRKHPRRAQDSKPPRAPRTSKAQRRRLTGKARH
 SGE

TRTRPLEQKLISEEDLAANDILDYKDDDDKV

Chromatograms: https://cdn.origene.com/chromatograms/mk6572_b09.zip

Restriction Sites: SgfI-MluI

Cloning Scheme:



ACCN: NM_024313

ORF Size: 639 bp

OTI Disclaimer: The molecular sequence of this clone aligns with the gene accession number as a point of reference only. However, individual transcript sequences of the same gene can differ through naturally occurring variations (e.g. polymorphisms), each with its own valid existence. This clone is substantially in agreement with the reference, but a complete review of all prevailing variants is recommended prior to use. [More info](#)

OTI Annotation: This clone was engineered to express the complete ORF with an expression tag. Expression varies depending on the nature of the gene.

Components: The ORF clone is ion-exchange column purified and shipped in a 2D barcoded Matrix tube containing 10ug of transfection-ready, dried plasmid DNA (reconstitute with 100 ul of water).

Reconstitution Method:

1. Centrifuge at 5,000xg for 5min.
2. Carefully open the tube and add 100ul of sterile water to dissolve the DNA.
3. Close the tube and incubate for 10 minutes at room temperature.
4. Briefly vortex the tube and then do a quick spin (less than 5000xg) to concentrate the liquid at the bottom.
5. Store the suspended plasmid at -20°C. The DNA is stable for at least one year from date of shipping when stored at -20°C.

RefSeq: [NM_024313.3](#)

RefSeq Size: 2840 bp

RefSeq ORF: 642 bp

Locus ID: 79159

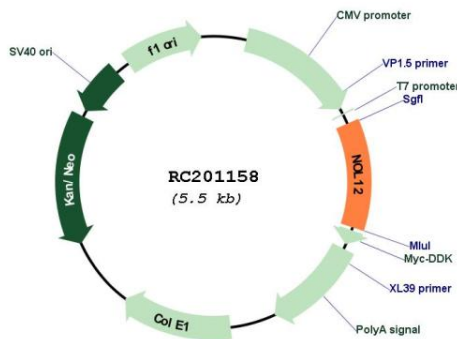
UniProt ID: [Q9UGY1](#)

Cytogenetics: 22q13.1

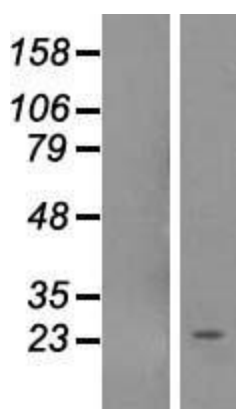
MW: 24.7 kDa

Gene Summary: May bind to 28S rRNA.[UniProtKB/Swiss-Prot Function]

Product images:



Circular map for RC201158



Western blot validation of overexpression lysate (Cat# [LY411312]) using anti-DDK antibody (Cat# [TA50011-100]). Left: Cell lysates from untransfected HEK293T cells; Right: Cell lysates from HEK293T cells transfected with RC201158 using transfection reagent MegaTran 2.0 (Cat# [TT210002]).