

Product datasheet for **RC201156L4V**

CDK4 (NM_000075) Human Tagged ORF Clone Lentiviral Particle

Product data:

Product Type:	Lentiviral Particles
Product Name:	CDK4 (NM_000075) Human Tagged ORF Clone Lentiviral Particle
Symbol:	CDK4
Synonyms:	CMM3; PSK-J3
Mammalian Cell Selection:	Puromycin
Vector:	pLenti-C-mGFP-P2A-Puro (PS100093)
Tag:	mGFP
ACCN:	NM_000075
ORF Size:	909 bp
ORF Nucleotide Sequence:	The ORF insert of this clone is exactly the same as(RC201156).
OTI Disclaimer:	The molecular sequence of this clone aligns with the gene accession number as a point of reference only. However, individual transcript sequences of the same gene can differ through naturally occurring variations (e.g. polymorphisms), each with its own valid existence. This clone is substantially in agreement with the reference, but a complete review of all prevailing variants is recommended prior to use. More info
OTI Annotation:	This clone was engineered to express the complete ORF with an expression tag. Expression varies depending on the nature of the gene.
RefSeq:	NM_000075.2
RefSeq Size:	2020 bp
RefSeq ORF:	912 bp
Locus ID:	1019
UniProt ID:	P11802
Cytogenetics:	12q14.1
Domains:	pkinese, TyrKc, S_TKc
Protein Families:	Druggable Genome, Protein Kinase



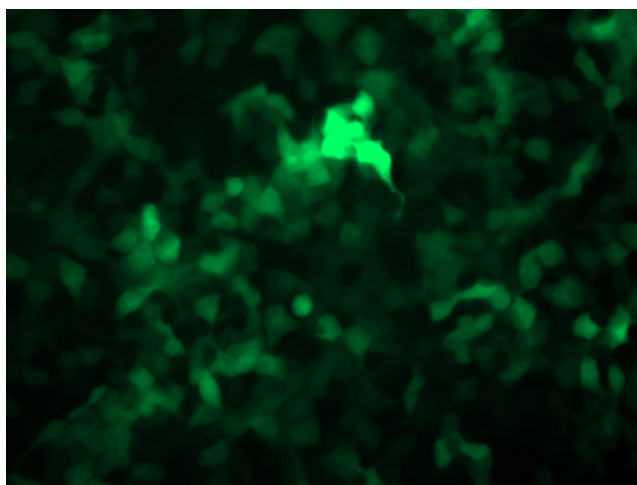
[View online »](#)

Protein Pathways: Bladder cancer, Cell cycle, Chronic myeloid leukemia, Glioma, Melanoma, Non-small cell lung cancer, p53 signaling pathway, Pancreatic cancer, Pathways in cancer, Small cell lung cancer, T cell receptor signaling pathway, Tight junction

MW: 33.7 kDa

Gene Summary: The protein encoded by this gene is a member of the Ser/Thr protein kinase family. This protein is highly similar to the gene products of *S. cerevisiae* cdc28 and *S. pombe* cdc2. It is a catalytic subunit of the protein kinase complex that is important for cell cycle G1 phase progression. The activity of this kinase is restricted to the G1-S phase, which is controlled by the regulatory subunits D-type cyclins and CDK inhibitor p16(INK4a). This kinase was shown to be responsible for the phosphorylation of retinoblastoma gene product (Rb). Mutations in this gene as well as in its related proteins including D-type cyclins, p16(INK4a) and Rb were all found to be associated with tumorigenesis of a variety of cancers. Multiple polyadenylation sites of this gene have been reported. [provided by RefSeq, Jul 2008]

Product images:



[RC201156L4] was used to prepare Lentiviral particles using [TR30037] packaging kit. HEK293T cells were transduced with RC201156L4V particle to overexpress human CDK4-mGFP fusion protein.