

Product datasheet for **RC201152L4V**

IDH2 (NM_002168) Human Tagged ORF Clone Lentiviral Particle

Product data:

Product Type:	Lentiviral Particles
Product Name:	IDH2 (NM_002168) Human Tagged ORF Clone Lentiviral Particle
Symbol:	IDH2
Synonyms:	D2HGA2; ICD-M; IDH; IDHM; IDP; IDPM; mNADP-IDH
Mammalian Cell Selection:	Puromycin
Vector:	pLenti-C-mGFP-P2A-Puro (PS100093)
Tag:	mGFP
ACCN:	NM_002168
ORF Size:	1356 bp
ORF Nucleotide Sequence:	The ORF insert of this clone is exactly the same as(RC201152).
OTI Disclaimer:	The molecular sequence of this clone aligns with the gene accession number as a point of reference only. However, individual transcript sequences of the same gene can differ through naturally occurring variations (e.g. polymorphisms), each with its own valid existence. This clone is substantially in agreement with the reference, but a complete review of all prevailing variants is recommended prior to use. More info
OTI Annotation:	This clone was engineered to express the complete ORF with an expression tag. Expression varies depending on the nature of the gene.
RefSeq:	NM_002168.2
RefSeq Size:	1818 bp
RefSeq ORF:	1359 bp
Locus ID:	3418
UniProt ID:	P48735
Cytogenetics:	15q26.1
Domains:	isodh
Protein Pathways:	Citrate cycle (TCA cycle), Glutathione metabolism, Metabolic pathways

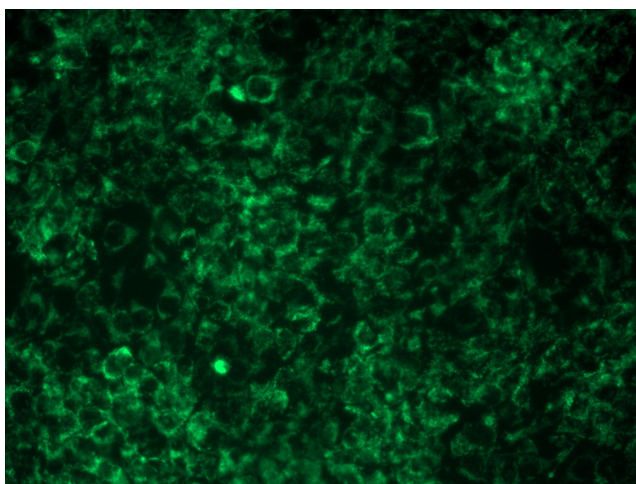


[View online »](#)

MW: 50.9 kDa

Gene Summary: Isocitrate dehydrogenases catalyze the oxidative decarboxylation of isocitrate to 2-oxoglutarate. These enzymes belong to two distinct subclasses, one of which utilizes NAD(+) as the electron acceptor and the other NADP(+). Five isocitrate dehydrogenases have been reported: three NAD(+)-dependent isocitrate dehydrogenases, which localize to the mitochondrial matrix, and two NADP(+)-dependent isocitrate dehydrogenases, one of which is mitochondrial and the other predominantly cytosolic. Each NADP(+)-dependent isozyme is a homodimer. The protein encoded by this gene is the NADP(+)-dependent isocitrate dehydrogenase found in the mitochondria. It plays a role in intermediary metabolism and energy production. This protein may tightly associate or interact with the pyruvate dehydrogenase complex. Alternative splicing results in multiple transcript variants. [provided by RefSeq, Feb 2014]

Product images:



[RC201152L4] was used to prepare Lentiviral particles using [TR30037] packaging kit. HEK293T cells were transduced with RC201152L4V particle to overexpress human IDH2-mGFP fusion protein.