

## Product datasheet for **RC201150**

### Cytokeratin 15 (KRT15) (NM\_002275) Human Tagged ORF Clone

#### Product data:

Product Type:	Expression Plasmids
Product Name:	Cytokeratin 15 (KRT15) (NM_002275) Human Tagged ORF Clone
Tag:	Myc-DDK
Symbol:	Cytokeratin 15
Synonyms:	CK15; K1CO; K15
Mammalian Cell Selection:	Neomycin
Vector:	pCMV6-Entry (PS100001)
E. coli Selection:	Kanamycin (25 ug/mL)



[View online »](#)

**ORF Nucleotide Sequence:**

>RC201150 ORF sequence  
 Red=Cloning site Blue=ORF Green=Tags(s)

TTTTGTAATACGACTCACTATAGGGCGGCCGGGAATTCGTCGACTGGATCCGGTACCGAGGAGATCTGCC  
 GCC**CGGATCGCC**

ATGACCACCACATTTCTGCAAATTCTTCTCCACCTTTGGGGTGGCTCAACCCGAGGGGTTCCCTCC  
 TGCTGGGGGAGGTGGCTTTGGTGGGGGAGTCTCTGGGGGAGGTGGAAGCCGAAGTATCTCAGCTTC  
 TTCTGCTAGGTTTGTCTCTTCAGGGTCAGGAGGAGATATGGGGTGGCATGAGGGTCTGTGGCTTTGGT  
 GGAGGGGCTGGTAGTGTTCGGTGGAGGCTTTGGAGGGGGCGTTGGTGGGGTTTTGGTGGTGGCTTTG  
 GTGGTGGCGATGGTGGTCTCTCTGGCAATGAGAAAATTACCATGCAGAACCTCAATGACCGCTGGC  
 CTCCTACCTGGACAAGGTACGTGCCCTGGAGGAGGCCAATGCTGACCTGGAGGTGAAGATCCATGACTGG  
 TACCAGAAGCAGACCCCAACCAGCCAGAATGCGACTACAGCCAATACTCAAGACCATTGAAGAGCTCC  
 GGGACAAGATCATGGCCACCACCATCGACAACCTCCGGGTATCCTGGAGATCGACAATGCCAGGCTGGC  
 TGGGACGACTTCAGGCTCAAGTATGAGAATGAGCTGGCCCTGCGCCAGGGCGTTGAGGCTGACATCAAC  
 GGCTTGCGCCGAGTCTGGATGAGCTGACCCTGGCCAGGACTGACCTGGAGATGCAGATCGAGGGCCTGA  
 ATGAGGAGCTAGCCTACCTGAAGAAGAACCACGAAGAGGAGATGAAGGAGTTCAGCAGCCAGCTGGCCGG  
 CCAGGTCAATGTGGAGATGGACGCAGCACCGGGTGTGGACCTGACCCGTGTGCTGGCAGAGATGAGGGAG  
 CAGTACGAGGCCATGGCGGAGAAGAACCGCCGGATGTCGAGGCTGTTCTTCAGCAAGACTGAGGAGC  
 TGAACAAAGAGGTGGCTCCAACACAGAAATGATCCAGACCAGCAAGACGGAGATCACAGACCTGAGACG  
 CACGATGCAGGAGCTGGAGATCGAGCTGCAGTCCCAGCTCAGCATGAAAGCTGGGCTGGAGAACTCACTG  
 GCCGAGACAGAGTGGCGCTATGCCACGCAGCTGCAGCAGATCCAGGGGCTCATTGGTGGCTGGAGGCC  
 AGCTGAGTGAGTCCGATGCGAGATGGAGGCTCAGAACCAGGAGTACAAGATGCTGCTTGACATAAAGAC  
 ACGGCTGGAGCAGGAGATCGCTACTTACCGCAGCCTGCTCGAGGGCCAGGATGCCAAGATGGCTGGCATT  
 GGCATCAGGGAAGCCTCTTCAGGAGGTGGTGGTAGCAGCAGCAATTTCCATCAATGTAGAAGAGTCAG  
 TGGATGGACAGGTGGTTTCTTCCACAAGAGAGAAATC

**ACGCGT**ACGCGGCCGCTCGAGCAGAACTCATCTCAGAAGAGGATCTGGCAGCAAATGATATCTGGATT  
 ACAAGGATGACGACGATAAGGTTTAA

**Protein Sequence:**

>RC201150 protein sequence  
 Red=Cloning site Green=Tags(s)

MTTFLQTSSTFGGGSTRGSSLLAGGGFGGGSLSGGGGSRISASSARFVSSGSGGGYGGMRVCGFG  
 GGAGSVFGGFGGVGGFGGFGGGDDGGLLSGNEKITMQNLNDRLASYLKVRAL E EANADLEVKIHDW  
 YQKQTPTSPECDSYQYFKTIEELRDKIMATTIDNSRVILEIDNARLAADDFRLKYENELALRQGV EADIN  
 GLRRVLDLTLARTDLEMQIEGLNEELAYLKKNHEEEMKEFSSQLAGQVNVEMDAAPGVDLTRVLAEMRE  
 QYEAMAENRRDVEAWFFSKTEELNKEVASNTEMIQTSKTEITDLRRTMQELEIELQSQLSMKAGLENSL  
 AETECRYATQLQQIQGLIGGLEAQLSELRCEME AQNQEYKMLLDIKRLEQEIATYRSLLEGQDAKMAGI  
 GI REASSGGGSSNFHINVEESVDGQVVS SHKREI

**TR**TRPLEQKLISEEDLAANDILDYKDDDDKV

**Chromatograms:**

[https://cdn.origene.com/chromatograms/mk6572\\_g12.zip](https://cdn.origene.com/chromatograms/mk6572_g12.zip)

**Restriction Sites:**

Sgfl-Mlul

**Cloning Scheme:**


**ACCN:** NM\_002275

**ORF Size:** 1368 bp

**OTI Disclaimer:** The molecular sequence of this clone aligns with the gene accession number as a point of reference only. However, individual transcript sequences of the same gene can differ through naturally occurring variations (e.g. polymorphisms), each with its own valid existence. This clone is substantially in agreement with the reference, but a complete review of all prevailing variants is recommended prior to use. [More info](#)

**OTI Annotation:** This clone was engineered to express the complete ORF with an expression tag. Expression varies depending on the nature of the gene.

**Components:** The ORF clone is ion-exchange column purified and shipped in a 2D barcoded Matrix tube containing 10ug of transfection-ready, dried plasmid DNA (reconstitute with 100 ul of water).

- Reconstitution Method:**
1. Centrifuge at 5,000xg for 5min.
  2. Carefully open the tube and add 100ul of sterile water to dissolve the DNA.
  3. Close the tube and incubate for 10 minutes at room temperature.
  4. Briefly vortex the tube and then do a quick spin (less than 5000xg) to concentrate the liquid at the bottom.
  5. Store the suspended plasmid at -20°C. The DNA is stable for at least one year from date of shipping when stored at -20°C.

**RefSeq:** [NM\\_002275.3](#)

**RefSeq Size:** 1861 bp

**RefSeq ORF:** 1371 bp

**Locus ID:** 3866

**UniProt ID:** [P19012](#)

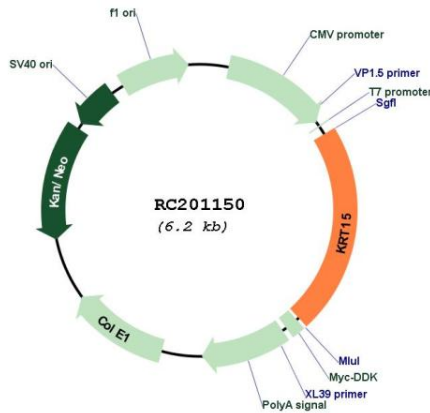
**Cytogenetics:** 17q21.2

**Domains:** filament

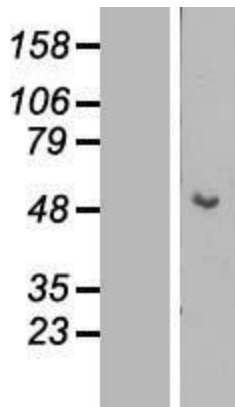
**MW:** 49.2 kDa

**Gene Summary:** The protein encoded by this gene is a member of the keratin gene family. The keratins are intermediate filament proteins responsible for the structural integrity of epithelial cells and are subdivided into cytokeratins and hair keratins. Most of the type I cytokeratins consist of acidic proteins which are arranged in pairs of heterotypic keratin chains and are clustered in a region on chromosome 17q21.2. [provided by RefSeq, Jul 2008]

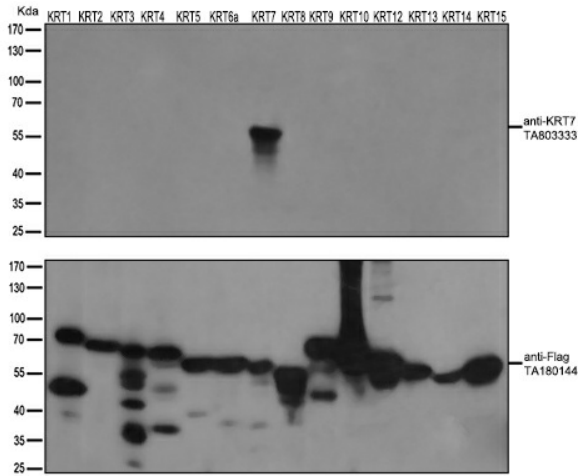
**Product images:**



Circular map for RC201150



Western blot validation of overexpression lysate (Cat# [LY419427]) using anti-DDK antibody (Cat# [TA50011-100]). Left: Cell lysates from untransfected HEK293T cells; Right: Cell lysates from HEK293T cells transfected with RC201150 using transfection reagent MegaTran 2.0 (Cat# [TT210002]).



HEK293T cells were transfected with the overexpression plasmids of 14 KRT isoforms (from left to right: KRT1, Cat# [RC223146]; KRT2, Cat# [RC213030]; KRT3, Cat# [RC223011]; KRT4, Cat# [RC220350]; KRT5, Cat# [RC206870]; KRT6a, Cat# [RC204328]; KRT7, Cat# [RC201124]; KRT8, Cat# [RC209570]; KRT9, Cat# [RC218091]; KRT10, Cat# [RC204500]; KRT12, Cat# [RC224946]; KRT13, Cat# [RC201179]; KRT14, Cat# [RC214907]; KRT15, Cat# RC201150) for 48 hrs and lysed. Equivalent amounts of cell lysates (5 ug per lane) were separated by SDS-PAGE and immunoblotted with anti-flag antibody (Cat# [TA180144], 1:1000) or anti-KRT7 mouse monoclonal antibody (Cat# [TA803333], 1:500).