

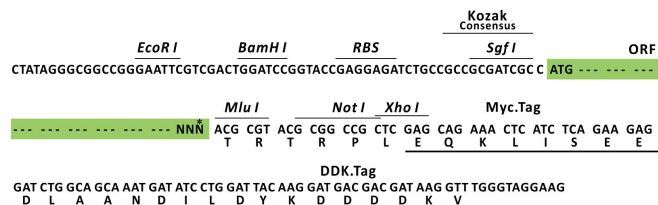
Product datasheet for RC201144L3

Phosphoribosyl pyrophosphate amidotransferase (PPAT) (NM_002703) Human Tagged Lenti ORF Clone

Product data:

| | |
|---------------------------|---|
| Product Type: | Expression Plasmids |
| Product Name: | Phosphoribosyl pyrophosphate amidotransferase (PPAT) (NM_002703) Human Tagged Lenti ORF Clone |
| Tag: | Myc-DDK |
| Symbol: | Phosphoribosyl pyrophosphate amidotransferase |
| Synonyms: | ATASE; GPAT; PRAT |
| Mammalian Cell Selection: | Puromycin |
| Vector: | pLenti-C-Myc-DDK-P2A-Puro (PS100092) |
| E. coli Selection: | Chloramphenicol (34 ug/mL) |
| ORF Nucleotide Sequence: | The ORF insert of this clone is exactly the same as(RC201144). |
| Restriction Sites: | Sgfl-MluI |
| Cloning Scheme: | |

Cloning sites used for ORF Shuttling:



* The last codon before the Stop codon of the ORF.

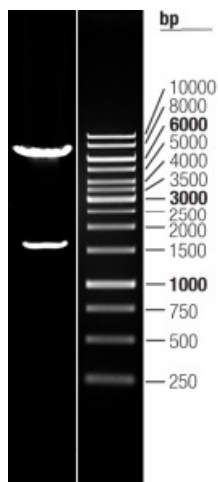
ACCN: NM_002703



[View online »](#)

| | |
|-------------------------------|---|
| ORF Size: | 1551 bp |
| OTI Disclaimer: | The molecular sequence of this clone aligns with the gene accession number as a point of reference only. However, individual transcript sequences of the same gene can differ through naturally occurring variations (e.g. polymorphisms), each with its own valid existence. This clone is substantially in agreement with the reference, but a complete review of all prevailing variants is recommended prior to use. More info |
| OTI Annotation: | This clone was engineered to express the complete ORF with an expression tag. Expression varies depending on the nature of the gene. |
| Components: | The ORF clone is ion-exchange column purified and shipped in a 2D barcoded Matrix tube containing 10ug of transfection-ready, dried plasmid DNA (reconstitute with 100 ul of water). |
| Reconstitution Method: | <ol style="list-style-type: none">1. Centrifuge at 5,000xg for 5min.2. Carefully open the tube and add 100ul of sterile water to dissolve the DNA.3. Close the tube and incubate for 10 minutes at room temperature.4. Briefly vortex the tube and then do a quick spin (less than 5000xg) to concentrate the liquid at the bottom.5. Store the suspended plasmid at -20°C. The DNA is stable for at least one year from date of shipping when stored at -20°C. |
| RefSeq: | NM_002703.3 |
| RefSeq Size: | 3713 bp |
| RefSeq ORF: | 1554 bp |
| Locus ID: | 5471 |
| UniProt ID: | Q06203 |
| Cytogenetics: | 4q12 |
| Domains: | GATase_2, Pribosyltran |
| Protein Families: | Druggable Genome, Protease |
| Protein Pathways: | Alanine, aspartate and glutamate metabolism, Metabolic pathways, Purine metabolism |
| MW: | 57.4 kDa |
| Gene Summary: | The protein encoded by this gene is a member of the purine/pyrimidine phosphoribosyltransferase family. It is a regulatory allosteric enzyme that catalyzes the first step of de novo purine nucleotide biosynthetic pathway. This gene and PAICS/AIRC gene, a bifunctional enzyme catalyzing steps six and seven of this pathway, are located in close proximity on chromosome 4, and divergently transcribed from an intergenic region. [provided by RefSeq, Mar 2011] |

Product images:



Double digestion of RC201144L3 using SgfI and MluI