

Product datasheet for RC201142

Protein Phosphatase 1 beta (PPP1CB) (NM_206876) Human Tagged ORF Clone

Product data:

Product Type:	Expression Plasmids
Product Name:	Protein Phosphatase 1 beta (PPP1CB) (NM_206876) Human Tagged ORF Clone
Tag:	Myc-DDK
Symbol:	PPP1CB
Synonyms:	HEL-S-80p; MP; NSLH2; PP-1B; PP1B; PP1beta; PP1c; PPP1beta; PPP1CD
Vector:	pCMV6-Entry (PS100001)
E. coli Selection:	Kanamycin (25 ug/mL)
Cell Selection:	Neomycin
ORF Nucleotide Sequence:	>RC201142 ORF sequence Red=Cloning site Blue=ORF Green=Tags(s)

TTTTGTAATACGACTCACTATAGGGCGCCGGAATTCGTCGACTGGATCCGGTACCGAGGAGATCTGCC
GCCGCGATCGCC

ATGGCGGACGGGGAGCTGAACGTGGACAGCCTCATCACCCGGCTGCTGGAGGTACGAGGATGTCGTCCAG
GAAAGATTGTGCAGATGACTGAAGCAGAAGTTCGAGGCTTATGTATCAAGTCTCGGGAGATCTTTCTCAG
CCAGCCTATTCTTTGGAATTGGAAGCACCGCTGAAAATTTGTGGAGATATTCATGGACAGTATACAGAT
TACTGAGATTATTTGAATATGGAGTTTTCCACCAGAAGCCAATATCTTTCTTAGGAGATTATGTGG
ACAGAGGAAAGCAGTCTTTGAAACCATTGTGTTGCTATTGGCTTATAAAATCAAATATCCAGAGAACTT
CTTTCTTAAAGAGGAAACCATGAGTGTGCTAGCATCAATCGCATTTATGGATTCTATGATGAATGCAAA
CGAAGATTTAATATTAATTTGTGGAAGACCTTCACTGATTGTTTTAACTGTCTGCCTATAGCAGCCATTG
TGGATGAGAAGATCTTCTGTTGTCATGGAGGATTGTCACCAGACCTGCAATCTATGGAGCAGATTCGGAG
AATTATGAGACCTACTGATGTCCCTGATACAGGTTTGTCTGTGATTTGCTATGGTCTGATCCAGATAAG
GATGTGCAAGGCTGGGGAGAAAATGATCGTGGTGTTCCTTTACTTTTGGAGCTGATGTAGTCAGTAAAT
TTCTGAATCGTCATGATTTAGATTTGATTTGTCGAGCTCATCAGGTGGTGAAGATGGATATGAATTTT
TGCTAAACGACAGTTGGTAACCTTATTTTCAGCCCAAATTAAGTGGCGAGTTTGATAATGCTGGTGGAA
ATGATGAGTGTGGATGAACTTTGATGTGTTTCATTTTCAGATATTGAAACCATCTGAAAAGAAAGCTAAAT
ACCAGTATGGTGGACTGAATCTGGACGTCTGTCACTCCACCTCGAACAGCTAATCCGCCGAAGAAAAG
G

ACGCGTACGCGGCCGCTCGAGCAGAACTCATCTCAGAAGAGGATCTGGCAGCAATGATATCCTGGATT
ACAAGGATGACGACGATAAGGTTTAA



[View online »](#)

Protein Sequence: >RC201142 protein sequence
 Red=Cloning site Green=Tags(s)

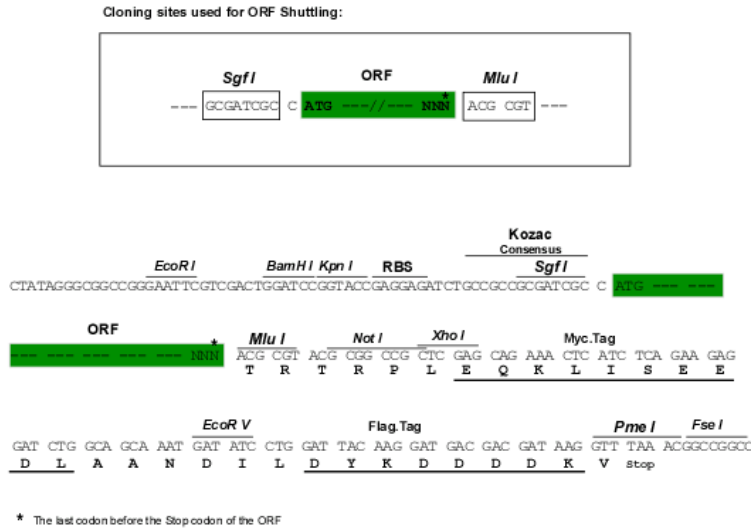
MADGELNVDSLITRLLLEVRGCRPGKIVQMTEAEVRGLCIKSREIFLSQPILLELEAPLKICGDIHGQYTD
 LLRLFYGGFPPEANYLFLGDYVDRGKQSLETICLLLAYKIKYPENFFLLRGNHECASINRIYGFYDECK
 RRFNIKLWKTFTDFCNCLPIAAIVDEKIFCCHGGLSPDLQSMEQIRIRMRPTDVPDTGLLCDLLWSDPK
 DVQGWGENDRGVSFTFGADVVSFLNRHDLDLICRAHQVVEDGYEFFAKRQLVTLF SAPNYCGEFDNAGG
 MMSVDETLMCSFQILKPSEKKAKYQYGLNSGRPVTPPRTANPPKKR

TRTRPLEQKLISEEDLAANDILDYKDDDDKV

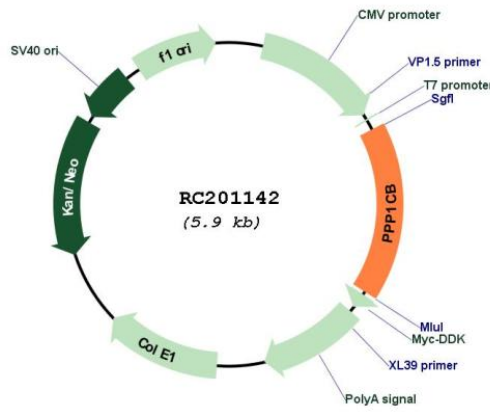
Chromatograms: https://cdn.origene.com/chromatograms/mk6403_c08.zip

Restriction Sites: SgfI-MluI

Cloning Scheme:



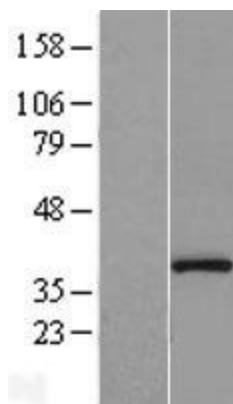
Plasmid Map:



ACCN: NM_206876

ORF Size:	981 bp
OTI Disclaimer:	The molecular sequence of this clone aligns with the gene accession number as a point of reference only. However, individual transcript sequences of the same gene can differ through naturally occurring variations (e.g. polymorphisms), each with its own valid existence. This clone is substantially in agreement with the reference, but a complete review of all prevailing variants is recommended prior to use. More info
OTI Annotation:	This clone was engineered to express the complete ORF with an expression tag. Expression varies depending on the nature of the gene.
Components:	The ORF clone is ion-exchange column purified and shipped in a 2D barcoded Matrix tube containing 10ug of transfection-ready, dried plasmid DNA (reconstitute with 100 ul of water).
Reconstitution Method:	<ol style="list-style-type: none">1. Centrifuge at 5,000xg for 5min.2. Carefully open the tube and add 100ul of sterile water to dissolve the DNA.3. Close the tube and incubate for 10 minutes at room temperature.4. Briefly vortex the tube and then do a quick spin (less than 5000xg) to concentrate the liquid at the bottom.5. Store the suspended plasmid at -20°C. The DNA is stable for at least one year from date of shipping when stored at -20°C.
RefSeq:	NM_206876.1 , NP_996759.1
RefSeq Size:	4786 bp
RefSeq ORF:	984 bp
Locus ID:	5500
UniProt ID:	P62140
Cytogenetics:	2p23.2
Protein Families:	Druggable Genome, Phosphatase
Protein Pathways:	Focal adhesion, Insulin signaling pathway, Long-term potentiation, Oocyte meiosis, Regulation of actin cytoskeleton, Vascular smooth muscle contraction
MW:	37.2 kDa
Gene Summary:	The protein encoded by this gene is one of the three catalytic subunits of protein phosphatase 1 (PP1). PP1 is a serine/threonine specific protein phosphatase known to be involved in the regulation of a variety of cellular processes, such as cell division, glycogen metabolism, muscle contractility, protein synthesis, and HIV-1 viral transcription. Mouse studies suggest that PP1 functions as a suppressor of learning and memory. Two alternatively spliced transcript variants encoding distinct isoforms have been observed. [provided by RefSeq, Jul 2008]

Product images:



Western blot validation of overexpression lysate (Cat# [LY404146]) using anti-DDK antibody (Cat# [TA50011-100]). Left: Cell lysates from untransfected HEK293T cells; Right: Cell lysates from HEK293T cells transfected with RC201142 using transfection reagent MegaTran 2.0 (Cat# [TT210002]).



Coomassie blue staining of purified PPP1CB protein (Cat# [TP301142]). The protein was produced from HEK293T cells transfected with PPP1CB cDNA clone (Cat# RC201142) using MegaTran 2.0 (Cat# [TT210002]).