

Product datasheet for **RC201139**

Kallikrein 10 (KLK10) (NM_001077500) Human Tagged ORF Clone

Product data:

Product Type:	Expression Plasmids
Product Name:	Kallikrein 10 (KLK10) (NM_001077500) Human Tagged ORF Clone
Tag:	Myc-DDK
Symbol:	Kallikrein 10
Synonyms:	NES1; PRSSL1
Mammalian Cell Selection:	Neomycin
Vector:	pCMV6-Entry (PS100001)
E. coli Selection:	Kanamycin (25 ug/mL)
ORF Nucleotide Sequence:	>RC201139 ORF sequence Red=Cloning site Blue=ORF Green=Tags(s)

TTTTGTAATACGACTCACTATAGGGCGGCCGGAATTCGTCGACTGGATCCGGTACCGAGGAGATCTGCC
GCC**CGGATCGCC**

ATGAGAGCTCCGCACCTCCACCTCTCCGCCGCTCTGGCGCCGGGCTCTGGCGAAGCTGCTGCCGCTGC
TGATGGCGCAACTCTGGGCCGAGAGGGCGGCTGCTCCCCAAAACGACACGCGCTTGACCCCGAAGC
CTATGGCGCCCCGTGCGCGCGGCTCGCAGCCCTGGCAGGTCTCGCTTCAACGGCTCTCGTCCAC
TGCGGGGTGCTCTGGTGGACCAGAGTTGGGTGCTGACGGCCGCGCACTGCGAAACAAGCCACTGTGG
CTCGAGTAGGGGATGACCACCTGCTGCTTCTTCAGGGCGAGCAGCTCCGCCGGACGACTCGCTCTGTGT
CCATCCCAAGTACCACAGGGCTCAGGCCCATCTGCCAAGGCGAACGGATGAGCACGATCTCATGTTG
CTAAAGCTGGCCAGGCCGTAGTGCCGGGGCCCCGCTCCGGGCCCTGCAGCTTCCCTACCGCTGTGCTC
AGCCCGGAGACCAGTGCCAGGTTGCTGGCTGGGGCACCACGGCCGCCGGAGAGTGAAGTACAACAAGGG
CCTGACCTGCTCCAGCATCACTATCCTGAGCCCTAAAGAGTGTGAGGTCTTACCTGGCGTGGTCACC
ACAACATGATATGTGCTGGACTGGACCGGGGCCAGGACCCTTGCAGAGTGACTCTGGAGGCCCTGG
TCTGTGACGAGACCCTCAAGGCATCCTCTCGTGGGTGTTTACCCTGTGGCTTGCCAGCATCCAGC
TGCTACACCCAGATCTGCAAAATACATGTCCTGGATCAATAAAGTCATACGCTCCAAC

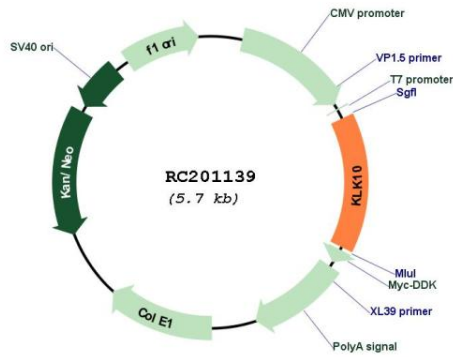
ACGCGTACGCGGCCGCTCGAGCAGAACTCATCTCAGAAGAGGATCTGGCAGCAAATGATATCCTGGATT
ACAAGGATGACGACGATAAGGTTTAA



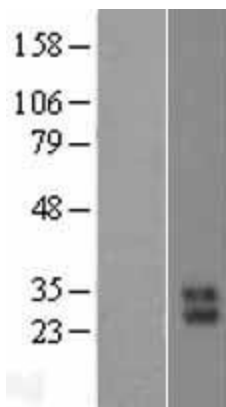
[View online »](#)

Reconstitution Method:	<ol style="list-style-type: none">1. Centrifuge at 5,000xg for 5min.2. Carefully open the tube and add 100ul of sterile water to dissolve the DNA.3. Close the tube and incubate for 10 minutes at room temperature.4. Briefly vortex the tube and then do a quick spin (less than 5000xg) to concentrate the liquid at the bottom.5. Store the suspended plasmid at -20°C. The DNA is stable for at least one year from date of shipping when stored at -20°C.
Note:	Plasmids are not sterile. For experiments where strict sterility is required, filtration with 0.22um filter is required.
RefSeq:	<u>NM_001077500.1</u> , <u>NP_001070968.1</u>
RefSeq Size:	3024 bp
RefSeq ORF:	831 bp
Locus ID:	5655
UniProt ID:	<u>O43240</u>
Cytogenetics:	19q13.41
Protein Families:	Druggable Genome, Protease, Secreted Protein
MW:	30.1 kDa
Gene Summary:	<p>Kallikreins are a subgroup of serine proteases having diverse physiological functions. Growing evidence suggests that many kallikreins are implicated in carcinogenesis and some have potential as novel cancer and other disease biomarkers. This gene is one of the fifteen kallikrein subfamily members located in a cluster on chromosome 19. Its encoded protein is secreted and may play a role in suppression of tumorigenesis in breast and prostate cancers. Alternate splicing of this gene results in multiple transcript variants encoding the same protein. [provided by RefSeq, Jul 2008]</p>

Product images:



Circular map for RC201139



Western blot validation of overexpression lysate (Cat# [LY400984]) using anti-DDK antibody (Cat# [TA50011-100]). Left: Cell lysates from untransfected HEK293T cells; Right: Cell lysates from HEK293T cells transfected with [RC218327] using transfection reagent MegaTran 2.0 (Cat# [TT210002]).