

## Product datasheet for **RC201137**

### **RFX3 (NM\_134428) Human Tagged ORF Clone**

#### **Product data:**

Product Type:	Expression Plasmids
Product Name:	RFX3 (NM_134428) Human Tagged ORF Clone
Tag:	Myc-DDK
Symbol:	RFX3
Mammalian Cell Selection:	Neomycin
Vector:	pCMV6-Entry (PS100001)
E. coli Selection:	Kanamycin (25 ug/mL)



[View online »](#)

ORF Nucleotide  
Sequence:

>RC201137 ORF sequence  
Red=Cloning site Blue=ORF Green=Tags(s)

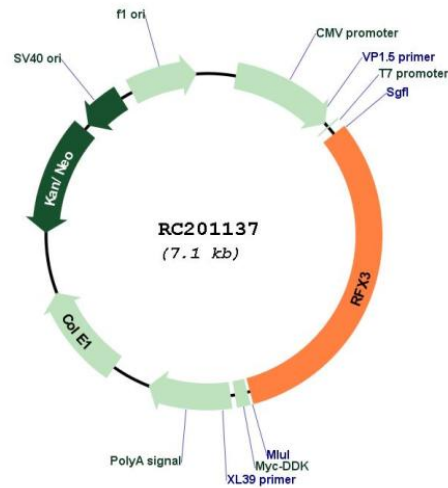
TTTTGTAATACGACTCACTATAGGGCGGCCGGGAATTCGTGACTGGATCCGGTACCGAGGAGATCTGCC  
GCCGCGATCGCC

ATGCAGACATCAGAGACTGGGTCGGACACAGGCTCGACAGTGACCTTACAAACATCTGTGGCTAGTCAAG  
CAGCAGTGCCTACGCAGGTGGTACAGCAAGTACCAGTACAACAACAGGTACAGCAGGTACAGACTGTGCA  
GCAGGTACAACATGTCTATCCCGCTCAGGTGCAGTATGTGGAAGGAAGCGATACTGTCTATACCAATGGA  
GCAATCCGAACAACAACGTATCCTTACACAGAGACACAGATGTACAGCCAAAATACTGGAGGGAATTACT  
TTGATACTCAAGGGAGTTCGCCCAGGTGACTACCGTGGTCTCATCCACAGTATGGTGGGCACTGGTGG  
GATTGAGATGGGCGTCACAGGAGGACAACCTCATCAGCAGCTCTGGAGGAACCTATCTGATCGGCAACTCA  
ATGGAGAATTCTGGTCACTCAGTGACACACACAACCTCGGGCTCCCGAGCGACAATTGAAATGGCGATTG  
AGACGCTGCAAAAGTCTGACGGTCTGTCCACTCACAGAAGCTCTTTCTCAACAGCCATCTCCAGTGGCT  
GTTGGACAATTATGAGACAGCAGAAGGAGTGAGCCTTCCAGAAGCACTGTACAACCACTACCTTCGA  
CACTGTACAGGAACACAACTGGACCCAGTCAATGCTGCCTCTTTGGAAAATTAATAAGTCAATTTTTA  
TGGGGCTACGAACCAGGAGATTGGGCACTAGAGGAAACTCCAAATACCACTACTATGGGATTCGTGTCAA  
GCCAGATTCCTCTTAATCGTCTGCAAGAAGACATGCAGTATATGGCTATGAGACAACAACCCATGCAA  
CAGAAACAAGGTACAAGCCTATGCAGAAAGTGGATGGGGTTGCAGATGGTTTCACAGGAAGTGGTCAAC  
AGACAGGCACATCTGTTGAGCAAAGTGAATGCCCAAAGCCAACATCATCAACAGTTTTTATAGATGCATC  
TCGAGCACTTCCAGAGTTTGGAGAAGTTGAAATCTTTCTGCCAGATGGTACTACCTTGGAGGATATC  
AAGTCACTGCAGAGTCTTATAGAGAGCACTGTGAGGCAATATTGGACGTTGTTGTGAATCTTCAATTTA  
GCCTGATAGAAAAATTGGGCAACATTTGGCGCTATTCTCCCTACTCCAAGTGGCACTACCACTACCA  
TACCGAATCGAGCAATCTGAGTGAATAGAAAGTCGACTTCCGAAAGCAAAGCTGATAACTCTGTGCAAA  
CATGAGTCTATCCTGAAATGGATGTGAACTGTGACCATGGGATGTACAGGCTTTGGTGGAGATTCTCA  
TCCCCGACGTCCTTAGACCTATTCTAGTGCCTTGACCCAAGCCATTGCAAAATTTGCAAAAAGCCTTGA  
AGGTTGGCTTTCCAATGCCATGAACAATATCCACAGAGAATGATACAAACCAAGGTTGCCGCTGTAAGT  
GCCTTTGCCAGACTCTGCGAAGATACACGTCGCTTAATCACCTGGCCAGGCAGCTCGTGCAGTGTCTC  
AGAACACTTCCAAATCAACCAGATGCTTAGTGACCTCAACCGTGTGACTTTGCCAATGTCCAGGAGCA  
GGCTTCTGGGTGTGCCAGTGTGATGACAACATGGTTCAGAGACTAGAAACAGACTTCAAGATGACTCTT  
CAGCAGCAGAGCACCCCTGGAGCAGTGGGCTGCGTGGCTTGACAATGTGATGATGCAAGCACTGAAACCT  
ATGAAGGAAGACCCAGTTTTCTAAAGCCGCCAGGCAGTTTCTGCTAAAAATGGTCTTTCTACAGCTCAAT  
GGTTATTCGGGACTTAACCTTACGCAGTGTGCTAGCTTTGGCTCCTCCACCTGATCCGCTACTCTAC  
GACGAATATATGTTTTACTTAGTAGAACATCGTGTGCTCAGGCAACAGGAGAGACTCCTATAGCAGTCA  
TGGGCGAGTTTGGTGATTTAAATGCCGTGTCTCCTGGAATCTGGATAAAGATGAAGGCAGTGAAGTAGA  
AAGTGAATGGATGAAGAAGTGGATGACTCTTCAGAGCCTCAAGCCAAAAGAGAGAAAACAGAGCTGAGC  
CAGGCATTTCCAGTGGGCTGCATGCAGCCTGTTCTCGAGACTGGCGTGAACCAAGCCTCCTGAATCCAA  
TTCACAGCGAGCACATTTGCACAAGTACTCAGACTATCAGACAGTGCAGCGCTACAGGAAATACCTACAC  
TGCAGTC

ACGCGTACGCGGCCGCTCGAGCAGAAACTCATCTCAGAAGAGGATCTGGCAGCAAATGATATCCTGGATT  
ACAAGGATGACGACGATAAGGTTTAA



## Plasmid Map:



ACCN: NM\_134428

ORF Size: 2247 bp

**OTI Disclaimer:** The molecular sequence of this clone aligns with the gene accession number as a point of reference only. However, individual transcript sequences of the same gene can differ through naturally occurring variations (e.g. polymorphisms), each with its own valid existence. This clone is substantially in agreement with the reference, but a complete review of all prevailing variants is recommended prior to use. [More info](#)

**OTI Annotation:** This clone was engineered to express the complete ORF with an expression tag. Expression varies depending on the nature of the gene.

**Components:** The ORF clone is ion-exchange column purified and shipped in a 2D barcoded Matrix tube containing 10ug of transfection-ready, dried plasmid DNA (reconstitute with 100 ul of water).

**Reconstitution Method:**

1. Centrifuge at 5,000xg for 5min.
2. Carefully open the tube and add 100ul of sterile water to dissolve the DNA.
3. Close the tube and incubate for 10 minutes at room temperature.
4. Briefly vortex the tube and then do a quick spin (less than 5000xg) to concentrate the liquid at the bottom.
5. Store the suspended plasmid at -20°C. The DNA is stable for at least one year from date of shipping when stored at -20°C.

RefSeq: [NM\\_134428.3](#)

RefSeq Size: 9338 bp

RefSeq ORF: 2250 bp

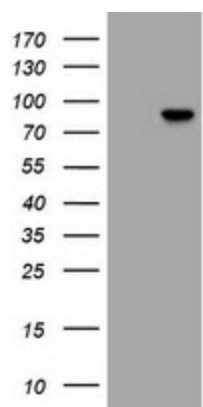
Locus ID: 5991

UniProt ID: [P48380](#)

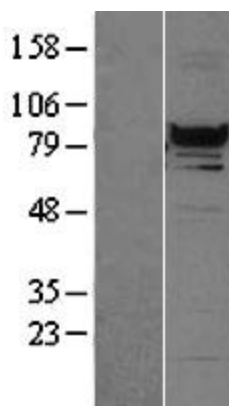
**Cytogenetics:** 9p24.2  
**Domains:** RFX\_DNA\_binding, RFX1\_trans\_act  
**Protein Families:** Transcription Factors  
**MW:** 83.5 kDa

**Gene Summary:** This gene is a member of the regulatory factor X gene family, which encodes transcription factors that contain a highly-conserved winged helix DNA binding domain. The protein encoded by this gene is structurally related to regulatory factors X1, X2, X4, and X5. It is a transcriptional activator that can bind DNA as a monomer or as a heterodimer with other RFX family members. Multiple transcript variants encoding different isoforms have been described for this gene. [provided by RefSeq, Aug 2013]

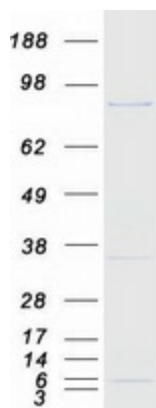
### Product images:



HEK293T cells were transfected with the pCMV6-ENTRY control (Cat# [PS100001], Left lane) or pCMV6-ENTRY RFX3 (Cat# RC201137, Right lane) cDNA for 48 hrs and lysed. Equivalent amounts of cell lysates (5 ug per lane) were separated by SDS-PAGE and immunoblotted with anti-RFX3 (Cat# [TA505916]). Positive lysates [LY403344] (100ug) and [LC403344] (20ug) can be purchased separately from OriGene.



Western blot validation of overexpression lysate (Cat# [LY403344]) using anti-DDK antibody (Cat# [TA50011-100]). Left: Cell lysates from untransfected HEK293T cells; Right: Cell lysates from HEK293T cells transfected with RC201137 using transfection reagent MegaTran 2.0 (Cat# [TT210002]).



Coomassie blue staining of purified RFX3 protein (Cat# [TP301137]). The protein was produced from HEK293T cells transfected with RFX3 cDNA clone (Cat# RC201137) using MegaTran 2.0 (Cat# [TT210002]).