

Product datasheet for RC201136

CRALBP (RLBP1) (NM_000326) Human Tagged ORF Clone

Product data:

Product Type:	Expression Plasmids
Product Name:	CRALBP (RLBP1) (NM_000326) Human Tagged ORF Clone
Tag:	Myc-DDK
Symbol:	CRALBP
Synonyms:	CRALBP
Mammalian Cell Selection:	Neomycin
Vector:	pCMV6-Entry (PS100001)
E. coli Selection:	Kanamycin (25 ug/mL)
ORF Nucleotide Sequence:	>RC201136 ORF sequence Red=Cloning site Blue=ORF Green=Tags(s)

TTTTGTAATACGACTCACTATAGGGCGCCGGGAATTCGTCGACTGGATCCGGTACCGAGGAGATCTGCC
GCC**CGATCGCC**

ATGTCAGAAGGGGTGGGCACGTTCCGCATGGTACCTGAAGAGGAACAGGAGCTCCGTGCCAACTGGAGC
AGCTCACAACCAAGGACCATGGACCTGTCTTTGGCCCGTGCAGCCAGCTGCCCGCCACACCTTGCAGAA
GGCCAAGGATGAGCTGAACGAGAGAGAGAGACCCGGGAGGAGGCAGTGCAGAGCTGCAGGAGATGGTG
CAGGCGCAGGCGCCTCGGGGAGGAGCTGGCGGTGGCCGTGGCGGAGAGGGTGAAGAGAAGGACAGCG
GCTTCTTCTGCGCTTCATCCGCGCACGGAAGTTCAACGTGGCCGTGCCTATGAGCTGCTCAGAGGCTA
TGTGAATTTCCGGCTGCAGTACCCTGAGCTCTTTGACAGCCTGTCCCAGAGGCTGTCCGCTGCACCATT
GAAGCTGGCTACCCTGGTGTCTCTCTAGTCGGGACAAGTATGGCCGAGTGGTCACTGCTCTTCAACATTG
AGAAGTGGCAAAGTCAAGAAATCACCTTTGATGAGATCTTGAGGCATATTGCTTCATCCTGGAGAAGCT
GCTGGAGAATGAGGAACTCAAATCAATGGCTTCTGCATCATTGAGAAGTCAAGGGCTTTACCATGCAG
CAGGCTGCTAGTCTCCGACTTCAGATCTCAGGAAGATGGTGGACATGCTCCAGGATTCCTTCCCAGCCC
GGTTCAAAGCCATCCACTTCATCCACCAGCCATGGTACTTCACCACGACCTACAATGTGGTCAAGCCCTT
CTTGAAGAGCAAGCTGCTTGAGAGGGTCTTTGTCCACGGGGATGACCTTTCTGGTTTCTACCAGGAGATC
GATGAGAACATCCTGCCCTCTGACTTCGGGGCACGCTGCCAAGTATGATGGCAAGGCCGTTGCTGAGC
AGCTCTTTGGCCCCAGGCCAAGCTGAGAACACAGCCTTC

ACGCGTACGCGGCCGCTCGAGCAGAAACTCATCTCAGAAGAGGATCTGGCAGCAAATGATATCCTGGATT
ACAAGGATGACGACGATAAGGTTTAA



[View online »](#)

Protein Sequence: >RC201136 protein sequence
Red=Cloning site Green=Tags(s)

MSEGVGTFRMVPEEEQELRAQLEQLTTKDHGPFVFGPCSQLPRHTLQKAKDELNEREETREEAVRELQEMV
 QAQAASGEELAVAVAERVQEKDSGFFLRFIRARKFNVGRAYELLRGVNFRLQYPELFDLSPEAVRCTI
 EAGYPGVLSSRDKYGRVVMLFNIENWQSQEITFDEILQAYCFILEKLENEETQINGFCIIENFKGFTMQ
 QAASLRSDLRKMDMLQDSFPARFKAIHFHQPWYFTTTYNVVKPFLKSKLLERVFVHGDDL SGFYQEI
 DENILPSDFGGTLPKYDGKAVAEQLFGPQAQAENTAF

TRTRPLEQKLISEEDLAANDILDYKDDDDKV

Chromatograms: https://cdn.origene.com/chromatograms/mk6390_e07.zip

Restriction Sites: SgfI-MluI

Cloning Scheme:



ACCN: NM_000326

ORF Size: 951 bp

OTI Disclaimer: The molecular sequence of this clone aligns with the gene accession number as a point of reference only. However, individual transcript sequences of the same gene can differ through naturally occurring variations (e.g. polymorphisms), each with its own valid existence. This clone is substantially in agreement with the reference, but a complete review of all prevailing variants is recommended prior to use. [More info](#)

OTI Annotation: This clone was engineered to express the complete ORF with an expression tag. Expression varies depending on the nature of the gene.

Components: The ORF clone is ion-exchange column purified and shipped in a 2D barcoded Matrix tube containing 10ug of transfection-ready, dried plasmid DNA (reconstitute with 100 ul of water).

Reconstitution Method:

1. Centrifuge at 5,000xg for 5min.
2. Carefully open the tube and add 100ul of sterile water to dissolve the DNA.
3. Close the tube and incubate for 10 minutes at room temperature.
4. Briefly vortex the tube and then do a quick spin (less than 5000xg) to concentrate the liquid at the bottom.
5. Store the suspended plasmid at -20°C. The DNA is stable for at least one year from date of shipping when stored at -20°C.

RefSeq: [NM_000326.5](#)

RefSeq Size: 1752 bp

RefSeq ORF: 954 bp

Locus ID: 6017

UniProt ID: [P12271](#)

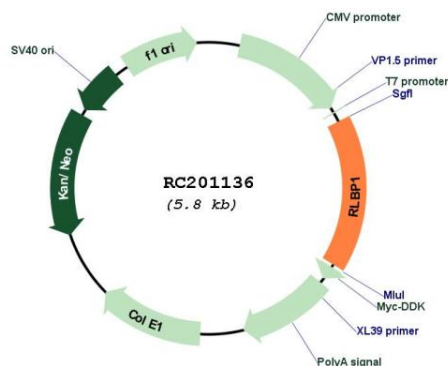
Cytogenetics: 15q26.1

Protein Families: Druggable Genome

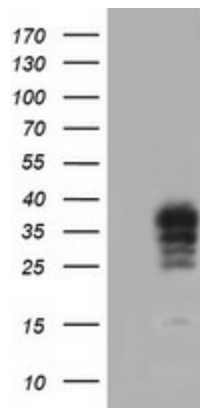
MW: 36.5 kDa

Gene Summary: The protein encoded by this gene is a 36-kD water-soluble protein which carries 11-cis-retinaldehyde or 11-cis-retinal as physiologic ligands. It may be a functional component of the visual cycle. Mutations of this gene have been associated with severe rod-cone dystrophy, Bothnia dystrophy (nonsyndromic autosomal recessive retinitis pigmentosa) and retinitis punctata albescens. [provided by RefSeq, Jul 2008]

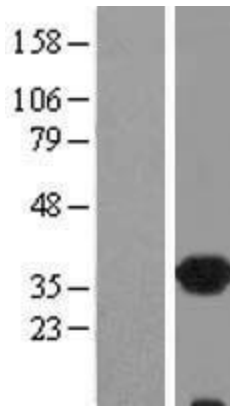
Product images:



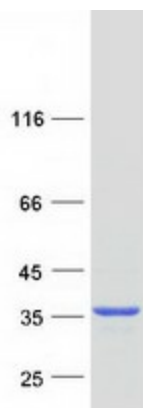
Circular map for RC201136



HEK293T cells were transfected with the pCMV6-ENTRY control (Cat# [PS100001], Left lane) or pCMV6-ENTRY RLBP1 (Cat# RC201136, Right lane) cDNA for 48 hrs and lysed. Equivalent amounts of cell lysates (5 ug per lane) were separated by SDS-PAGE and immunoblotted with anti-RLBP1 (Cat# [TA503186]). Positive lysates [LY424794] (100ug) and [LC424794] (20ug) can be purchased separately from OriGene.



Western blot validation of overexpression lysate (Cat# [LY424794]) using anti-DDK antibody (Cat# [TA50011-100]). Left: Cell lysates from untransfected HEK293T cells; Right: Cell lysates from HEK293T cells transfected with RC201136 using transfection reagent MegaTran 2.0 (Cat# [TT210002]).



Coomassie blue staining of purified RLBP1 protein (Cat# [TP301136]). The protein was produced from HEK293T cells transfected with RLBP1 cDNA clone (Cat# RC201136) using MegaTran 2.0 (Cat# [TT210002]).