

## Product datasheet for **RC201135**

### SMARCD3 (NM\_001003802) Human Tagged ORF Clone

#### Product data:

Product Type:	Expression Plasmids
Product Name:	SMARCD3 (NM_001003802) Human Tagged ORF Clone
Tag:	Myc-DDK
Symbol:	SMARCD3
Synonyms:	BAF60C; CRACD3; Rsc6p
Mammalian Cell Selection:	Neomycin
Vector:	pCMV6-Entry (PS100001)
E. coli Selection:	Kanamycin (25 ug/mL)



[View online »](#)

**ORF Nucleotide Sequence:**

>RC201135 representing NM\_001003802  
 Red=Cloning site Blue=ORF Green=Tags(s)

TTTTGTAATACGACTCACTATAGGGCGGCCGGGAATTCGTCGACTGGATCCGGTACCGAGGAGATCTGCC  
 GCC**GCGATCGCC**

ATGACTCCAGGTCTTCAGCACCCACCCACCGTGGTACAGCGCCCCGGGATGCCGTCTGGAGCCCGGATGC  
 CCCACCAGGGGGCGCCATGGGGCCCCCGGCTCCCCGTACATGGGCAGCCCCGCGTGGCACCCGGCCT  
 GGCCCCGCGGGCATGGAGCCCGCCGCAAGCGAGCAGCGCCCCCGCCGGGAGAGCCAGGCACAGAGC  
 CAGGGCCAGCCGGTGCCACCGCCCCGCGGAGCCGCAGTGCCAAGAGGAGGAAGATGGCTGACAAAA  
 TCCTCCCTCAAAGGATTCGGGAGCTGGTCCCCGAGTCCCAGGCTTACATGGACCTCTTGCCATTTGAGAG  
 GAAACTGGATCAAACCATCATGCGGAAGCGGTGGACATCCAGGAGGCTCTGAAGAGGCCATGAAGCAA  
 AAGCGGAAGTGCAGCTATATCTCCAACACTTTAAACCCTGCGAAGCCTGATGCTGAGGATCCGACG  
 GCAGCATTGCCTCTGGGAGCTACGGGTGGAGGGGAAGCTCCTGGATGATCCCAGCAAACAGAAGCGGAA  
 GTTCTCTTTCTTCAAGAGTTTGGTCATCGAGCTGGACAAAGATCTTTATGGCCCTGACAACCCACCTC  
 GTTGAGTGGCATCGGACACCCACGACCCAGGAGACGGACGGCTTCCAGGTGAAACGGCCTGGGGACCTGA  
 GTGTGCGTGCACGCTGCTCCTCATGCTGGACTACCAGCCTCCCCAGTTCAAACCTGGATCCCCGCCTAGC  
 CCGGCTGCTGGGGCTGCACACACAGAGCCGCTCAGCCATTGTCCAGGCCCTGTGGCAGTATGTGAAGACC  
 AACAGGCTGCAGGACTCCCATGACAAGGAATACATCAATGGGGACAAGTATTTCCAGCAGATTTTGTATT  
 GTCCCCGGCTGAAGTTTTCTGAGATTCACAGCCCTCACAGCCCTGCTATTGCCCCCTGACCCAATTGT  
 CATCAACCATGTCATCAGCGTGGACCCTCAGACCAGAAGAAGACGGCGTGCTATGACATTGACGTGGAG  
 GTGGAGGAGCCATTAAGGGGCAGATGAGCAGCTTCTCCTATCCAGGCCAACCAGCAGGAGATCAGTG  
 CTCTGGACAGTAAGATCCATGAGACGATTGAGTCCATAAACCCAGCTCAAGATCCAGAGGGACTTCATGCT  
 AAGCTTCTCCAGAGACCCCAAAGGCTATGTCCAAGACTGCTCCGCTCCAGAGCCGGGACTCAAGGTTG  
 ATGACAGATGTAGCCGGCAACCCGAAAGAGGAGCGCCGGGCTGAGTTCTACCACCAGCCCTGGTCCAGG  
 AGGCCGTGAGTGCCTACTTCTACTGCAAGATCCAGCAGCGCAGGAGGCTGGAGCAGTCGCTGTTGT  
 GCGCAACACC

**ACGCGT**ACGCGGCCGCTCGAGCAGAAACTCATCTCAGAAGAGGATCTGGCAGCAAATGATATCTGGATT  
 ACAAGGATGACGACGATAAGGTTTAA

**Protein Sequence:**

>RC201135 representing NM\_001003802  
 Red=Cloning site Green=Tags(s)

MTPGLQHPPTVVQRPGMPSPGARMPHQGAPMGGPPGSPYMGSPAVRPLAPAGMEPARKRAAPPPGQSQAQS  
 QGQPVPTAPARSRSAKRRKMADKILPQRIELVPESQAYMDLLAFERKLDQTIMRKRVDIQEALKRPMKQ  
 KRKLRLYISNTFNPAPKDAEDSDGSIASWELRVEGKLLDDPSKQKRKFSFFKSLVIELDKDLYGPDNHL  
 VEWHRTPTTQETDGFQVKRPGDLSVRCTLLMLDYQPPQKLDPRLARLLGLHTQSRSAIVQALWQYVKT  
 NRLQDSDHKEYINGDKYFQQIFDCPRLKFSEIPQRLTALLPPDPVIVINHVISVDPDQKKTACYDIDVE  
 VEEPLKGQMSFLLSTANQQEISALDSKIHETIESINQLKIQRDFMLFSRDPKGYVQDLLRSQSRDLKV  
 MTDVAGNPEEERRAEFYHQWPSQEAVSRYFYCKIQRRQELEQSLVVRNT

**TR**TRPLEQKLISEEDLAANDILDYKDDDDKV

**Chromatograms:**

[https://cdn.origene.com/chromatograms/mg3306\\_h07.zip](https://cdn.origene.com/chromatograms/mg3306_h07.zip)

**Restriction Sites:**

Sgfl-Mlul

**Cloning Scheme:**


**ACCN:** NM\_001003802

**ORF Size:** 1410 bp

**OTI Disclaimer:** The molecular sequence of this clone aligns with the gene accession number as a point of reference only. However, individual transcript sequences of the same gene can differ through naturally occurring variations (e.g. polymorphisms), each with its own valid existence. This clone is substantially in agreement with the reference, but a complete review of all prevailing variants is recommended prior to use. [More info](#)

**OTI Annotation:** This clone was engineered to express the complete ORF with an expression tag. Expression varies depending on the nature of the gene.

**Components:** The ORF clone is ion-exchange column purified and shipped in a 2D barcoded Matrix tube containing 10ug of transfection-ready, dried plasmid DNA (reconstitute with 100 ul of water).

**Reconstitution Method:**

1. Centrifuge at 5,000xg for 5min.
2. Carefully open the tube and add 100ul of sterile water to dissolve the DNA.
3. Close the tube and incubate for 10 minutes at room temperature.
4. Briefly vortex the tube and then do a quick spin (less than 5000xg) to concentrate the liquid at the bottom.
5. Store the suspended plasmid at -20°C. The DNA is stable for at least one year from date of shipping when stored at -20°C.

**Note:** Plasmids are not sterile. For experiments where strict sterility is required, filtration with 0.22um filter is required.

**RefSeq:** [NM\\_001003802.1](#), [NP\\_001003802.1](#)

**RefSeq Size:** 1689 bp

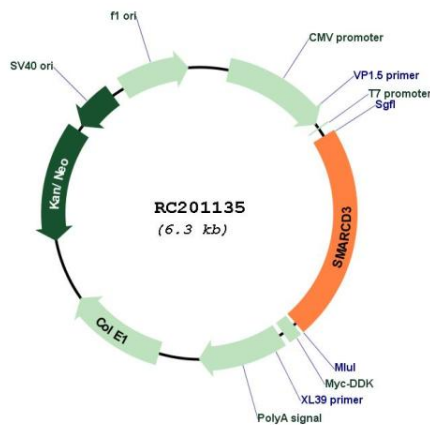
**RefSeq ORF:** 1413 bp

**Locus ID:** 6604

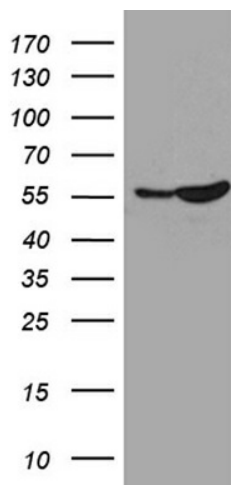
**UniProt ID:** [Q6STE5](#)  
**Cytogenetics:** 7q36.1  
**Protein Families:** Druggable Genome, Transcription Factors  
**MW:** 53.5 kDa

**Gene Summary:** The protein encoded by this gene is a member of the SWI/SNF family of proteins, whose members display helicase and ATPase activities and which are thought to regulate transcription of certain genes by altering the chromatin structure around those genes. The encoded protein is part of the large ATP-dependent chromatin remodeling complex SNF/SWI and has sequence similarity to the yeast Swp73 protein. Multiple alternatively spliced transcript variants have been found for this gene, but the biological validity of some variants has not been determined. [provided by RefSeq, Jul 2008]

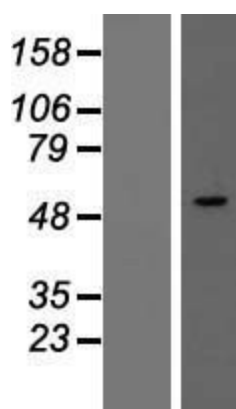
### Product images:



Circular map for RC201135



HEK293T cells were transfected with the pCMV6-ENTRY control (Cat# [PS100001], Left lane) or pCMV6-ENTRY SMARCD3 (Cat# RC201135, Right lane) cDNA for 48 hrs and lysed. Equivalent amounts of cell lysates (5 ug per lane) were separated by SDS-PAGE and immunoblotted with anti-SMARCD3 (Cat# [TA811107])(1:2000). Positive lysates [LY424015] (100ug) and [LC424015] (20ug) can be purchased separately from OriGene.



Western blot validation of overexpression lysate (Cat# [LY418910]) using anti-DDK antibody (Cat# [TA50011-100]). Left: Cell lysates from untransfected HEK293T cells; Right: Cell lysates from HEK293T cells transfected with [RC222044] using transfection reagent MegaTran 2.0 (Cat# [TT210002]).