

Product datasheet for **RC201132**

UQCRC2 (NM_003366) Human Tagged ORF Clone

Product data:

Product Type:	Expression Plasmids
Product Name:	UQCRC2 (NM_003366) Human Tagged ORF Clone
Tag:	Myc-DDK
Symbol:	UQCRC2
Synonyms:	MC3DN5; QCR2; UQCR2
Mammalian Cell Selection:	Neomycin
Vector:	pCMV6-Entry (PS100001)
E. coli Selection:	Kanamycin (25 ug/mL)



[View online »](#)

ORF Nucleotide Sequence:

>RC201132 ORF sequence
 Red=Cloning site Blue=ORF Green=Tags(s)

TTTTGTAATACGACTCACTATAGGGCGGCCGGAATTCGTCGACTGGATCCGGTACCGAGGAGATCTGCC
 GCC**CGCATCGCC**

ATGAAGCTACTAACCAGAGCCGGCTCTTTCTCGAGATTTTATCCCTCAAAGTTGCCCCAAAGTTAAAG
 CCACAGCTGCGCCTGCAGGAGCACCGCCACAACCTCAGGACCTTGAGTTTACCAAGTTACCAATGGCTT
 GGTGATTGCTTCTTTGGAAAATATTCTCTGTATCAAGAATTGGTTTGTTCATTAAAGCAGGCAGTAGA
 TATGAGGACTTCAGCAATTTAGGAACCACCCATTTGCTGCGTCTTACATCCAGTCTGACGACAAAAGGAG
 CTTTCATCTTTCAAGATAACCCGTGGAATTTGAAGCAGTTGGTGGCAAATTAAGTGTGACCGCAACAAGGA
 AAACATGGCTTATACTGTGGAATGCCTGCGGGGTGATGTTGATTTCTAATGGAGTTCTGCTCAATGTC
 ACCACAGCACCAGAATTCGTCGTTGGGAAGTAGCTGACCTTCAGCCTCAGCTAAAGATTGACAAAGCTG
 TGGCCTTTCAGAATCCGAGACTCATGTCATTGAAAATTTGCATGCAGCAGCTTACCGGAATGCCTTGGC
 TAATCCCTTGATTGTCCTGACTATAGGATTGGAAAAGTGACATCAGAGGAGTTACATTACTTCGTTTCAG
 AACCATTTCAAGTGAAGAATGGCTTTGATTGGACTTGGTGTGAGTCACTCTGTTCTAAAGCAAGTTG
 CTGAACAGTTTCTCAACATGAGGGGTGGCTTGGTTTATCTGGTGCAAAGGCCAACTACCGTGGAGGTGA
 AATCCGAGAACAGAATGGAGACAGTCTTGTCCATGCTGCTTTTGTAGCAGAAAAGTGTGTCGCGGGAAGT
 GCAGAGGCAATGCATTTAGTGTCTTCAGCATGTCCTCGGTGCTGGGCCACATGTCAAGAGGGGCAGCA
 ACACCACCAGCCATCTGCACCAGGCTGTTGCCAAGGCAACTCAGCAGCCATTTGATGTTTCTGCATTTAA
 TGCCAGTTACTCAGATTTGACTCTTTGGGATTTATACTATCTCCAGGCCACAGCTGCTGGAGATGTT
 ATCAAGGCTGCCTATAATCAAGTAAAAACAATAGCTCAAGGAAACCTTTCCAACACAGATGTCCAAGCTG
 CCAAGAACAAAGCTGAAAGCTGGATACCTAATGTGAGTGGAGTCTTCTGAGTGTTCCTGGAAGAAGTCGG
 GTCCCAGGCTCTAGTTGCTGGTTCTTACATGCCACCATCCACAGTCTTACAGCAGATTGATTCAGTGGCT
 AATGCTGATATCATAAATGCGGCAAGAAGTTGTTTCTGGCCAGAAGTCAATGGCAGCAAGTGGAAAT
 TGGGACATACACCTTTTGTGATGAGTTG

ACGCGTACGCGGCCGCTCGAGCAGAACTCATCTCAGAAGAGGATCTGGCAGCAAATGATATCCTGGATT
 ACAAGGATGACGACGATAAGGTTTAA

Protein Sequence:

>RC201132 protein sequence
 Red=Cloning site Green=Tags(s)

MKLLTRAGSFSRFYSLKVPKVKATAAPAGAPPQPDLEFTKLPNGLVIASLENYSPVSRIGLFIKAGSR
 YEDFSNLGTHLLRLTSSLTTKGASSFKITRGIEAVGGKLSVTATRENMAYTVECLRGDVIDLMEFLLNV
 TTAPEFRRWEVADLQPQLKIDKAVAFQNPQTHVIENLHAAAYRNALANPLYCPDYRIGKVTSEELHYFVQ
 NHFTSARMALIGLVSHPVVKQVAEQFLNMRGGLGLSGAKANYRGEIREQNGDSLVAHAFVAESAVAGS
 AEANAFSVLQHVLGAGPHVKRGSNTTSHLHQAVAKATQQPFDVSAFNASYSDSGLFGIYITISQATAAGDV
 IKAAYNQVKITIAQGNLSNTDVQAANKLKAGYLMVESSECFLEEVSQALVAGSYMPSTVLQQIDSVA
 NADIINAAKKFVSGQKSMAASGNLGHPTPFVDEL

TRTRPLEQKLISEEDLAANDILDYKDDDDKV

Chromatograms:

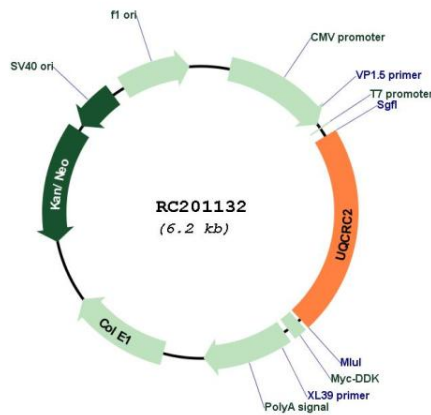
https://cdn.origene.com/chromatograms/mk6395_g08.zip

Restriction Sites:

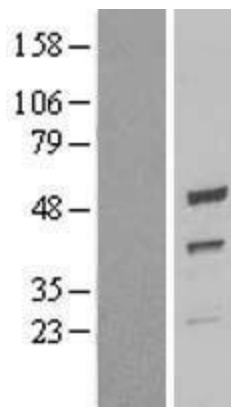
Sgfl-Mlul

UniProt ID: [P22695](#)
Cytogenetics: 16p12.2
Domains: Peptidase_M16, Peptidase_M16_C
Protein Families: Druggable Genome, Protease
Protein Pathways: Alzheimer's disease, Cardiac muscle contraction, Huntington's disease, Metabolic pathways, Oxidative phosphorylation, Parkinson's disease
MW: 48.4 kDa
Gene Summary: The protein encoded by this gene is located in the mitochondrion, where it is part of the ubiquinol-cytochrome c reductase complex (also known as complex III). This complex constitutes a part of the mitochondrial respiratory chain. Defects in this gene are a cause of mitochondrial complex III deficiency nuclear type 5. [provided by RefSeq, Jul 2015]

Product images:



Circular map for RC201132



Western blot validation of overexpression lysate (Cat# [LY418722]) using anti-DDK antibody (Cat# [TA50011-100]). Left: Cell lysates from untransfected HEK293T cells; Right: Cell lysates from HEK293T cells transfected with RC201132 using transfection reagent MegaTran 2.0 (Cat# [TT210002]).