

Product datasheet for **RC201131**

ZNF74 (NM_003426) Human Tagged ORF Clone

Product data:

Product Type:	Expression Plasmids
Product Name:	ZNF74 (NM_003426) Human Tagged ORF Clone
Tag:	Myc-DDK
Symbol:	ZNF74
Synonyms:	COS52; hZNF7; ZFP520; ZNF520
Mammalian Cell Selection:	Neomycin
Vector:	pCMV6-Entry (PS100001)
E. coli Selection:	Kanamycin (25 ug/mL)



[View online »](#)

ORF Nucleotide
Sequence:

>RC201131 ORF sequence

Red=Cloning site Blue=ORF Green=Tags(s)

TTTTGTAATACGACTCACTATAGGGCGGCCGGGAATTCGTCGACTGGATCCGGTACCGAGGAGATCTGCC
GCC**CGGATCGCC**ATGGAGATCCCTGCCCGGAGCCCGAGAAGACAGCTCTTTCTCTCAGGATCCTGCTCTTTCCCTGAAAG
AGAATCTCGAGGATATATCGGGTTGGGGTCTCCCGAAGCCAGGTCCAAGGAATCGGTGAGTTTCAAGGA
TGTGGCTGTGGACTTACCCAGGAGGAGTGGGGTCAACTAGACTCCCCTCAGAGGCCCTGTACCGGAT
GTGATGTTGGAGAACTACCAGAACCCTTCTGCCCTAGGACCTCCACTGCACAAGCCAGATGTGATCTCTC
ATCTGGAACGAGGCGAGGAGCCATGGAGCATGCAGAGGGAAGTCCCAGAGGGCCCTGTCCAGAATGGGA
GCTGAAGCGGTGCCCTCTAACAGCAGGGCATTGCAAAGAAGAACCGGCCAGGAGCCCATCATGGAG
CGGCCCTCGGCGGGGCGCAGGCGTGGGGCGCCAGGCAGGTGCTCTGCAGAGGAGTCAGGCTGCGCCCT
GGGCGCCCGCACCTGCCATGGCCTGGGACGTCCCTGTAGAGGAATCCCCTCAGGTGTCCCTCTTCGC
CCAGCAACCGGTTCCCGAGGGGGACCCCTTGCTGGACACACGCAAGAACGTCCAGGCCACTGAGGGCAGA
ACCAAGGCCCCCGGAGACTGTGTGCAGGGGAAAACGCCTCCACGCCAAGTGAGCCAGAAAAGTTCCCCC
AGGTGCGCCGGCAGCGCGGGGCGGGCGCCGGGAGGGCGAGTTTCGTGTGCGGCGAGTGCGGGAAGGCGTT
CCGCCAGAGCTCCTCCCTCACGCTGCACCGGCGTGGCACAGCCGGGAGAAGGCTTACAAGTGCGATGAA
TGCGGCAAGGCCCTTACCTGGAGCACCACCTTCTGGAGCACCAGGCGCATCCACACCGGCGAGAAGCCCT
TCTTCTGCGGCGAGTGCGGGAAGGCCCTTACAGTGCACCTCGTCCCTCAACGTGCACCAGCGCATCCACAC
GGGCGAGCGGCCCTACAAGTGCAGCGCTGCGAGAAGGCCCTTACAGTGCAGCTCGTGTCTCAGCATGCAC
CTGCGGGTGCACACCGGCGAGAAGCCCTACCGGTGCGGCGAGTGCGGCAAGGCCCTTCAACCAGCGTACAC
ACCTCACACGCCACCACCGCATCCACACGGGCGAGAAGCCCTACCAGTGCAGGCTCCTGCGGCAAGGCCCT
CACCTGCCACTCATCCCTCACCGTGCATGAGAAGATCCACAGCGGGGACAAGCCGTTCAAGTGCAGCGAC
TGCAGAGAAGGCCCTTCAACAGCCGCTCGCCCTCACCTCCACCAGAGGACGCACACGGGCGAGAAGCCCT
TCAAGTGCAGGACTGCGGGAAGGGCTTACAGTGCACCGGTACCTGCTCGTGCACCGGCGCATCCACAG
CGGCGAGAAGGCCCTTCAAGTGAACGAGTGCAGGCAAGGCCCTTACAGTCCCAGCCTACCTCATCGTGCAC
CGGCGCATCCACACAGGCGAGAAGCCCTTACAGTGCAGCCAGTGTGGAAGGCCCTTACAGTGCACCTCGT
CCCTCATCGTGCACAGCGCATCCACACCGGTGAGAAGCCCTACAAGTGCAGCGAGTGCAGGAGGAGCCTT
CAGCCAGAACCAGTGTCTCATTAAACATCAGAAAATCCACTCCGGGAGAGTGTGTTAAGTGTGAGAAA
TGTGGGAGATGTTCAACTGGAGCTCGCACCTCACTGAGCACCAGAGGCTGCACAGCGAGGGGAAGCCCT
TGGCCATCCAGTTCAACAAACACCTGCTCAGCACATACTACGTGCCTGGCAGCCTGCTGGGTGCAGGGGA
TGCTGGACTGAGGGACGTGGATCCCATCGACGCGCTGGATGTGGCAAAGCTCTTGTGCGTGGTTCCCCCC
AGAGCTGGCAGGAATTTCTCCCTGGGGAGCAAACCTCGAAACAG**CGGACCG**ACGCGTACGCGGCCGCTCGAGCAGAACTCATCTCAGAAGAGGATCTGGCAGCAAATGATATCC
TGGATTACAAGGATGACGACGATAAGGTTTAA

Protein Sequence: >RC201131 protein sequence
Red=Cloning site Green=Tags(s)

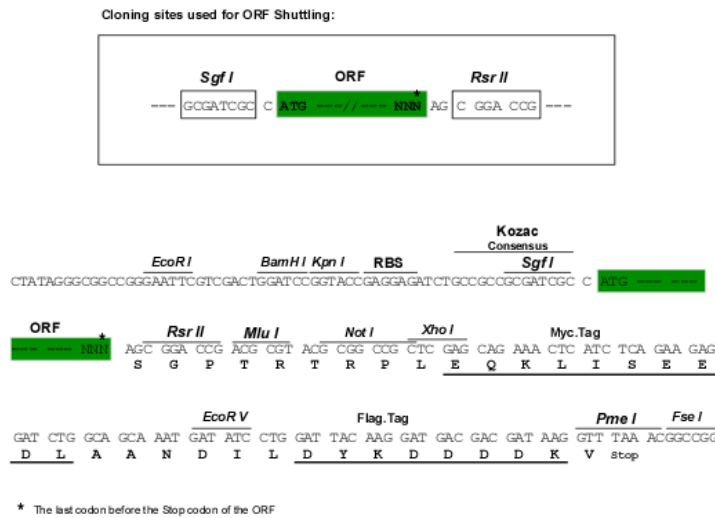
```
MEIPAPEPEKTALSSQDPALSLKENLEDISGWGLPEARSKESVSFKDVAVDFTQEEWGQLDSPQRALYRD
VMLENYQNLLALGPPLHKPDVISHLERGEEPWSMQREVPRGPCPEWELKAVPSQQQGICKEEPAQEPIME
RPLGGAQAWGRQAGALQRSQAAPWAPAPAMAWDVPVEEFLRCPLFAQQRVPEGGPLLDTRKNVQATEGR
TKAPARLCAGENASTPSEPEKFPQVRRQRGAGAGEGEFVCGECGKAFRQSSSLTLHRRWHSREKAYKCDE
CGKAFTWSTNLLLEHRRIHTEKPFPCGECGKAFSCHSSLNVHQRIHTGERPYKCSACEKAFSCSSLLSMH
LRVHTGEKPYRCGECGKAFNQRTHLTRHRIHTGEKPYQCSCGKAFSTCHSSLTVHEKIHSGDKPFKCS
CEKAFNSRSLTLHQRTHTGEKPFKCADCGKGFSCHAYLLVHRRIHSGEKPFKCNCEGKAFSSHAYLIVH
RRIHTGEKPFDCSQWKAFSCHSSLIVHQRIHTGEKPYKCECGRAFQNHCLIKHQKIHSGEKSFKCEK
CGEMFNWSSHLTEHQRLHSEGKPLAIQFNKHLSTYYVPGSLLGAGDAGLRDVPIDALDVAKLLCVVPP
RAGRNFSLGSKPRN
```

SGPTRTRPLEQKLISEEDLAANDILDYKDDDDKV

Chromatograms: https://cdn.origene.com/chromatograms/mk6794_e01.zip

Restriction Sites: SgfI-RsrII

Cloning Scheme:



ACCN: NM_003426

ORF Size: 1932 bp

OTI Disclaimer: The molecular sequence of this clone aligns with the gene accession number as a point of reference only. However, individual transcript sequences of the same gene can differ through naturally occurring variations (e.g. polymorphisms), each with its own valid existence. This clone is substantially in agreement with the reference, but a complete review of all prevailing variants is recommended prior to use. [More info](#)

OTI Annotation: This clone was engineered to express the complete ORF with an expression tag. Expression varies depending on the nature of the gene.

Components: The ORF clone is ion-exchange column purified and shipped in a 2D barcoded Matrix tube containing 10ug of transfection-ready, dried plasmid DNA (reconstitute with 100 ul of water).

Reconstitution Method:

1. Centrifuge at 5,000xg for 5min.
2. Carefully open the tube and add 100ul of sterile water to dissolve the DNA.
3. Close the tube and incubate for 10 minutes at room temperature.
4. Briefly vortex the tube and then do a quick spin (less than 5000xg) to concentrate the liquid at the bottom.
5. Store the suspended plasmid at -20°C. The DNA is stable for at least one year from date of shipping when stored at -20°C.

Note: Plasmids are not sterile. For experiments where strict sterility is required, filtration with 0.22um filter is required.

RefSeq: [NM_003426.4](#)

RefSeq Size: 3954 bp

RefSeq ORF: 1935 bp

Locus ID: 7625

UniProt ID: [Q16587](#)

Cytogenetics: 22q11.21

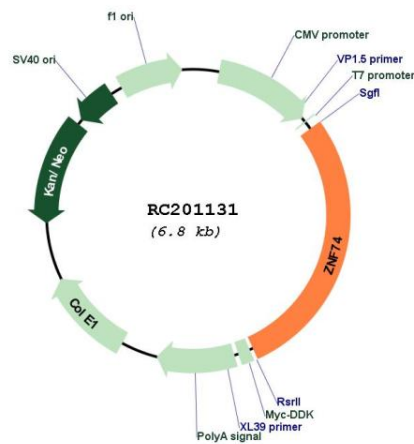
Domains: zf-C2H2

Protein Families: Transcription Factors

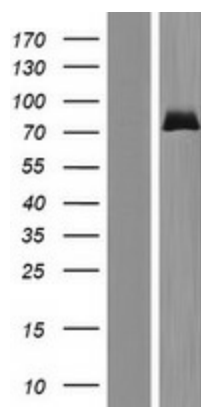
MW: 72.2 kDa

Gene Summary: May play a role in RNA metabolism.[UniProtKB/Swiss-Prot Function]

Product images:



Circular map for RC201131



Western blot validation of overexpression lysate (Cat# [LY418683]) using anti-DDK antibody (Cat# [TA50011-100]). Left: Cell lysates from untransfected HEK293T cells; Right: Cell lysates from HEK293T cells transfected with RC201131 using transfection reagent MegaTran 2.0 (Cat# [TT210002]).