

## Product datasheet for **RC201128**

### cleavage stimulation factor (CSTF1) (NM\_001324) Human Tagged ORF Clone

#### Product data:

Product Type:	Expression Plasmids
Product Name:	cleavage stimulation factor (CSTF1) (NM_001324) Human Tagged ORF Clone
Tag:	Myc-DDK
Symbol:	cleavage stimulation factor
Synonyms:	CstF-50; CstFp50
Mammalian Cell Selection:	Neomycin
Vector:	pCMV6-Entry (PS100001)
E. coli Selection:	Kanamycin (25 ug/mL)



[View online »](#)

**ORF Nucleotide Sequence:**

>RC201128 ORF sequence  
 Red=Cloning site Blue=ORF Green=Tags(s)

TTTTGTAATACGACTCACTATAGGGCGGCCGGAATTCGTCGACTGGATCCGGTACCGAGGAGATCTGCC  
 GCCCGGATCGCC

ATGTACAGAACCAAAGTGGGCTTGAAGGACCGCCAGCAGCTCTACAAGCTGATCATTAGCCAGCTGCTAT  
 ATGACGGCTACATCAGCATCGCCAATGGCCTCATCAATGAAATCAAGCCTCAGTCTGTGTGTGCACCCTC  
 GGAGCAGCTCCTGCATCTCATCAAACCTCGGAATGAAAAACGATGACACCGCAGTTCAGTATGCAATTGGT  
 CGTTTCAGATACTGTTGCCCTGGCACAGGGATTGACCTGGAATTTGATGCAGATGTTAGACTATGTCCC  
 CAGAGGCTTCTGAGTACGAAACATGCTATGTCACATCACATAAAGGACCATGCCGTGTAGCTACCTATAG  
 TAGAGATGGACAGTTAATAGCTACTGGGCTGCTGATGCTTCGATAAAGATACTTGACACAGAGAGGATG  
 TTGGCCAAAAGTGCCATGCCAATAGAGGTCATGATGAATGAGACCGCACAAAAATATGAAAAACCACC  
 CAGTGATTCGAACTCTTTATGACCATGTGGATGAAGTACGTGCCTTGCTTTCCACCAACAGAACAGAT  
 CCTGGCTTCTGGTTCAAGGGATTAACTCTTAAATTTTATTGATTATCCAAACCATCAGCAAAAAGAGCC  
 TTCAAATACATTAGGAAGCTGAAATGTTACGTTCCATCTCTTTTCATCCTTCTGGAGACTTTATACTTG  
 TCGGAACCTCAGCATCCTACTCTTCGCCTTTATGATATCAACACCTTTCAATGTTTGTCTCTTGCAATCC  
 TCAAGATCAACACACCGATGCTATATGTTCCGTTAATTACAATCTAGTGCCAATATGTACGTAACCTGGA  
 AGCAAGGACGGCTGCATCAAATTATGGGATGGTGTTCAAATCGATGCATCAAACTTTTGAGAAAGCAC  
 ATGACGGTGTGAAGTTTGTCTGCCATTTTTTCCAAAAATTCTAAATACATTCTCTCAAGTGGAAAAGA  
 CTCTGTAGCTAACTTTGGGAAATCAACGGGACGAACACTGGTCAGATACACGGGCGCGGGTTAAGT  
 GGACGCCAGGTGCACCGGACACAGGCTGTGTTAACCACACCGAGGACTATGTGTTGCTGCCCGACGAGA  
 GGACGATCAGTCTTTGCTGCTGGACTCGAGGACAGCCGAGCGGAGAAACCTGCTGCTGTTGGGGCACAA  
 CAATATTGTACGCTGCATAGTGCACTCCCCACCAACCCCGGGTTCATGACGTGCAGCGATGACTTCAGA  
 GCGCGTTTTTGGTACCGGAGATCGACCACTGAC

ACGCGTACGCGGCCGCTCGAGCAGAACTCATCTCAGAAGAGGATCTGGCAGCAATGATATCCTGGATT  
 ACAAGGATGACGACGATAAGGTTTAA

**Protein Sequence:**

>RC201128 protein sequence  
 Red=Cloning site Green=Tags(s)

MYRTKVLKDRQQLYKLIISQLLYDGYISIANGLINEIKPQSVCAPSEQLLHLIKLGMENDDTAVQYAIG  
 RSDTVAPGTGIDLEFDADVQTMSPLEASEYETCYVTSKGPVATYSRDGQLIATGSADASIKILDTERM  
 LAKSAMP I EVMMNETAQNMENHPVIRTLYDHVDEVTCLAFHPTEQILASGRDYTLKLFDYKPSAKRA  
 FKYIQEAEMLRISFHPSGDFILVGTQHPTLRLYDINTFQCFVSCNPQDQHTDAICSVNYNSSANMYVTG  
 SKDGCIKLWDGVSNRCITTFEKAHDGAEVCSAIFSKNSKYILSSGKDSVAKLWEISTGRTLVRVTGAGLS  
 GRQVHRTQAVFNHTEDYVLLPDERTISLCCWDSRTAERRNLLSLGHNNIVRCIVHSPTNPGFMTCSDDFR  
 ARFWYRRSTTD

TRTRPLEQKLISEEDLAANDILDYKDDDDKV

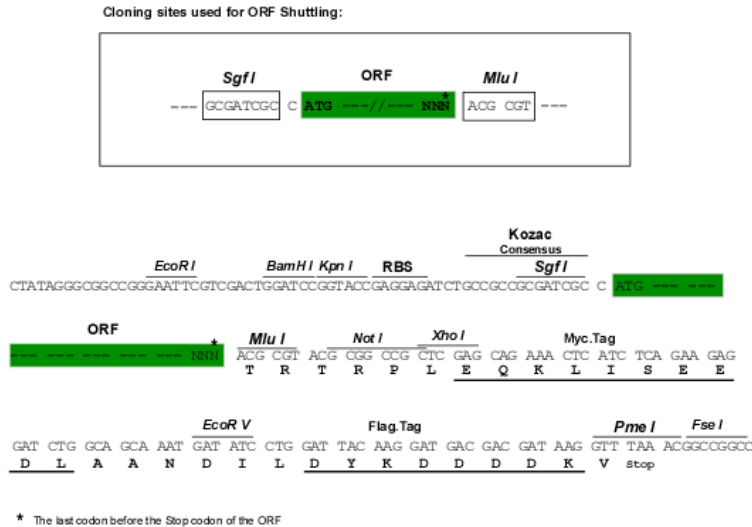
**Chromatograms:**

[https://cdn.origene.com/chromatograms/mk6409\\_e12.zip](https://cdn.origene.com/chromatograms/mk6409_e12.zip)

**Restriction Sites:**

Sgfl-Mlul

Cloning Scheme:



ACCN: NM\_001324

ORF Size: 1293 bp

OTI Disclaimer: The molecular sequence of this clone aligns with the gene accession number as a point of reference only. However, individual transcript sequences of the same gene can differ through naturally occurring variations (e.g. polymorphisms), each with its own valid existence. This clone is substantially in agreement with the reference, but a complete review of all prevailing variants is recommended prior to use. [More info](#)

OTI Annotation: This clone was engineered to express the complete ORF with an expression tag. Expression varies depending on the nature of the gene.

Components: The ORF clone is ion-exchange column purified and shipped in a 2D barcoded Matrix tube containing 10ug of transfection-ready, dried plasmid DNA (reconstitute with 100 ul of water).

- Reconstitution Method:
1. Centrifuge at 5,000xg for 5min.
  2. Carefully open the tube and add 100ul of sterile water to dissolve the DNA.
  3. Close the tube and incubate for 10 minutes at room temperature.
  4. Briefly vortex the tube and then do a quick spin (less than 5000xg) to concentrate the liquid at the bottom.
  5. Store the suspended plasmid at -20°C. The DNA is stable for at least one year from date of shipping when stored at -20°C.

Note: Plasmids are not sterile. For experiments where strict sterility is required, filtration with 0.22um filter is required.

RefSeq: [NM\\_001324.3](#)

RefSeq Size: 2323 bp

RefSeq ORF: 1296 bp

Locus ID: 1477

UniProt ID: [Q05048](#)

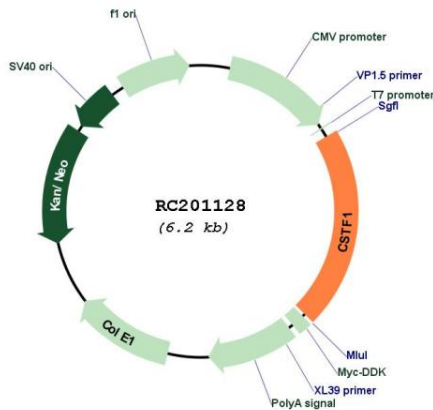
Cytogenetics: 20q13.2-q13.31

Domains: WD40

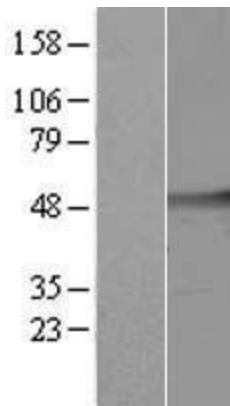
MW: 48.4 kDa

**Gene Summary:** This gene encodes one of three subunits which combine to form cleavage stimulation factor (CSTF). CSTF is involved in the polyadenylation and 3'end cleavage of pre-mRNAs. Similar to mammalian G protein beta subunits, this protein contains transducin-like repeats. Several transcript variants with different 5' UTR, but encoding the same protein, have been found for this gene. [provided by RefSeq, Jul 2008]

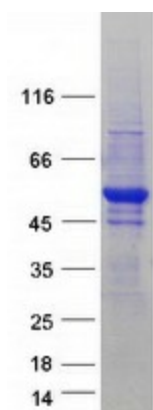
**Product images:**



Circular map for RC201128



Western blot validation of overexpression lysate (Cat# [LY422380]) using anti-DDK antibody (Cat# [TA50011-100]). Left: Cell lysates from untransfected HEK293T cells; Right: Cell lysates from HEK293T cells transfected with [RC219441] using transfection reagent MegaTran 2.0 (Cat# [TT210002]).



Coomassie blue staining of purified CSTF1 protein (Cat# [TP301128]). The protein was produced from HEK293T cells transfected with CSTF1 cDNA clone (Cat# RC201128) using MegaTran 2.0 (Cat# [TT210002]).