

Product datasheet for RC201122

BAT3 (BAG6) (NM_080702) Human Tagged ORF Clone

Product data:

Product Type:	Expression Plasmids
Product Name:	BAT3 (BAG6) (NM_080702) Human Tagged ORF Clone
Tag:	Myc-DDK
Symbol:	BAT3
Synonyms:	BAG-6; BAT3; D6S52E; G3
Mammalian Cell Selection:	Neomycin
Vector:	pCMV6-Entry (PS100001)
E. coli Selection:	Kanamycin (25 ug/mL)
ORF Nucleotide Sequence:	>RC201122 representing NM_080702 Red=Cloning site Blue=ORF Green=Tags(s)

TTTTGTAATACGACTCACTATAGGGCGGCCGGAATTCGTCGACTGGATCCGGTACCGAGGAGATCTGCC
GCC**CGATCGCC**

ATGGAGCCTAATGATAGTACCAGTACCGCTGTGGAGGAGCCTGACAGCTTGGAGGTGTTGGTGAAGACCT
TGGACTCTCAAACCTCGTACCTTTATTGTGGGGGCCAGATGAATGTAAAAGAGTTAAGGAGCACATTGC
TGCTCTGTGACGATCCCATCTGAAAAACAACGGCTCATTTACCAGGGACGAGTTCTGCAAGATGATAAG
AAGCTTCAGGAATACAATGTTGGGGAAAGTTATCCACCTGGTGAACGGGCTCCTCCTCAGACTCACC
TCCCTTCTGGGCATCTTCTGGGACGGGTCTGCCTCAGCCACTCATGGTGGGGATCCCCCCTGGTAC
TCGGGGGCTGGGCCTCTGTTTCATGACCGGAATGCCAACAGCTATGTCATGGTTGGAACCTTCAATCTT
CCTAGTGACGGCTCTGCTGTGGATGTTACATCAACATGGAACAGGCCCGGATTAGAGTGAGCCCCGGG
TACGGCTGGTGATGGCTCAGCACATGATCAGGGATATACAGACCTTACTATCCCGGATGGAGTGTGAGG
AGGGCCCCAACCGCAGCACAGTCAGCCGCCCGCAGCCACCGGCTGTGACCCCGGAGCCAGTAGCCTTG
AGCTCTCAAACATCAGAACCAGTTGAAAGTGAAGCACCTCCCCGGGAGCCATGGAGGCAGAAGAAGTGG
AGGAGCGTGGCCAGCCAGAACCCGGAGCTACTCCTGGCCAGCCCCAGCGGGCCCAACCTGCCCC
GGAAACAATGCACCAACCATCCTTCCCTGCGGAGTATGTCGAGGTGCTCCAGGAGCTACAGCGGCTG
GAGAGTCGCTCCAGCCCTTCTTGACGCTACTACGAGTTCTGGGTGCTGCTGCCACCACGGACTACA
ATAACAATCAGAGGGCCGGGAGGAGGATCAGCGGTTGATCAACTTGGTAGGGGAGAGCCTGCGACTGCT
GGCAACACCTTTGTTGCACTGTCTGACCTGCGTGCAATCTGGCCTGCACGCCCCACGACACCTGCAT
GTGGTCCGGCCTATGTCTCACTACACCACCCCATGGTGTCCAGCAGGCAGCCATTCACATACAGATCA
ATGTGGGAACCACTGTGACCATGACAGGAAATGGGACTCGCCCCCCTCACTCCAATGCAGAGGCACC
TCCCCCTGGTCTGGCAGGCCTCATCCGTGGCTCCGTCTTCTACCAATGTCGAGTCTCAGCTGAGGGG
GCTCCCCGCCAGGTCCAGTCCCCGCCAGCCACCGAGGATCCCGGATTTCCACCAGA
GTGTGAAACCCGTGGTTCATGATGCACATGAACATTCAAGATTCTGGCACACAGCCTGGTGGTGTCCGAG
TGCTCCACTGGCCCCCTGGGACCCCTGGTTCATGGCAAACCTGGGACAGCAGGTGCCAGGCTCCCA



[View online »](#)

ACAGTCCAACCCGGTGGTATTGCCCGGCCACTCCTCCACAGGCTCGGCCTCCCATCCTGGAGGGC
CCCCAGTCTCTGGGACTGCAGGGCGCCGGTCTGGGTACCAATGCCTCGTTGGCCAGATGGTGAAGCG
CCTTGTGGGGCAGCTTCTTATGCAGCCAGTCTTGTGGCTCAGGGGACCCAGGTATGGTCCACCGCCA
GCCCTGCCACTGCTTCTGCCAGTGTGGCACCACCAACACAGCTACCACAGTGGCCCCGCTCTGGGG
GGCCTGCCAGCCTCCACCCACCCTCAACCCTCCATGGTGTATCTTCACTTCTCAGTCTCTGGGAA
CCTGTAGGGCTGCAGGGCCAGGGCTGGAGGGCCTGGTGTGGCTTCTCCACCATCACTGTGGCGATG
CCTGGTGTCCCTGCCTTCTCCAAGGCATGACTGACTTCTTGCAGGCAACACAGACAGCCCTCCACCAC
CCCCACTCCTCCACCCACCCTGCCCCAGAGCAGCAGACCATGCCCCACCAGGCTCCCTTCTGG
TGGCGCAGGGAGTCTGGAGGCCTGGGTCTTGGAGCCTGTACCCGGAGTTTTTTACCTCAGTGGTGCAG
GGTGTGCTCAGCTCCCTGCTGGGCTCCCTGGGGCTCGGGCTGGCAGCAGTAAAAGTATTGCTGCCTTCA
TACAACGCCTCAGTGGATCCAGCAACATCTTTGAGCCTGGAGCTGATGGGGCCCTGGATTCTTTGGGGC
CTTGCTTCTCTTCTGTGCCAGAACTTCTCTATGGTGGACGTAGTGTGCTTCTCCATGGGCATTTCCAG
CCTACTACAACGGCTCCAGCCCCAGCTGCGATCCTTCTCCACCAGCACTACCTGGGTGGTCAAGAGCCCA
CAGCCAGTAACATCCGGATGGCAACCCACACATTGATCACGGGGCTAGAAGAGTATGTGCGGGAGAGTTT
TTCCTTGGTGCAGTTTCCAGCAGGTGTGGACATCATCCGGACAAACCTGGAATTTCTCCAAGAGCAGTTT
AATAGCATTGCTGCGCATGTGCTGCATTGCACAGATAGTGGATTTGGGGCCCGGTTGCTGGAGTTGTGTA
ACCAAGGCCTGTTTGAATGCCTGGCCCTAAACCTGCACTGCTTGGGGGGACAGCAGATGGAGCTTGTGCTG
TGTATCAATGGCCGAATTCGTGATGTCTCGTGGGGTGAATCCCTCCTTGGTGAAGTGGTGGTGGTGGT
ATGATGGGACTGAGGCTTCAAGTGGTACTGGAGCAGTGCCTGTAGGCCCTGATGCCATTCTCAGATACG
TTCGCAGGGTTGGTATCCCCCAGCCACTTCTGAGGAGCCAAATGGAAGTTCAGGGAGCAGAAAGAGC
TCCCCCTGAGCCTCAGCGGGAGAATGCTTCCCCAGCCCTGGAACAACAGCAGAAAGAGCCATGTCCCGA
GGTCCACCTCCTGCTCCTGAGGGGGCTCCCGGGATGAACAGGATGGAGCTTCACTGAGACAGAACCTT
GGGCAGCTGCAGTCCCCCAGAATGGGTCCCTATTATCCAGCAGGACATTCAGAGCCAGCGGAAGGTGAA
ACCGCAGCCCCCTCTGAGTGTGCCTACCTCAGTGGTATGCCTGCCAAGAGACGCAAGACGATGCAGGGT
GAGGGCCCCAGCTGCTTCTCTCAGAGGCTGTGAGCCGGGCAGCTAAGGCAGCCGGAGCTCGGCCCTGA
CGAGCCCCGAGAGCCTGAGCCGGGACCTGGAGGCACCAGAGGTTCAAGAGAGCTACAGGCAGCAGCTCCG
GTCTGATATACAAAACGACTGCAGGAAGACCCCAACTACAGTCCCAGCGCTTCCCAATGCCAGCGG
GCCTTTGCTGATGATCCT

ACGCGTACGCGGGCGCTCGAGCAGAACTCATCTCAGAAGAGGATCTGGCAGCAATGATATCCTGGATT
ACAAGGATGACGACGATAAGGTTTAA

Protein Sequence: >RC201122 representing NM_080702
 Red=Cloning site Green=Tags(s)

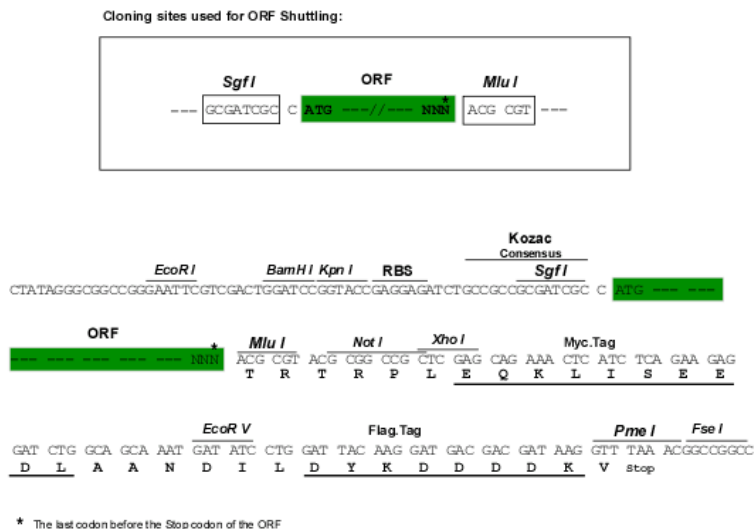
MEPNSTSTAVEEPDSLEVLVKTLDSTRTFIVGAQMNVEKFEKHEIAASVSIPISEKQRLIYQGRVLQDDK
 KLQEYNVGGKVIHLVERAPPQTHLPSGASSGTGSASATHGGGSPGTRGPGASVHDRNANSYVMVGT
 FNLPSDGSADVHINMEQAPIQSEPRVRLVMAQHMRDIQTLLSRMECRGGPQPQHSQPPPQPAVTPEPVAL
 SSQTSEPVSEAPPREPMEAEVEERAPAQNPELTPGPAPAGPTPAPETNAPNHPSPAIEYVEVLQELQRL
 ESRLLQPFLLQRYEYVLAATTDYNNHHEGREEDQRLINLVGESLRLGNTFVALSDLRCNLACTPPRHLH
 VVRPMSHYTTPMVLQAAIPIQINVTGTRPPTPNAEAPPPGPGQASSVAPSSTNVSSAEG
 APPPGAPPPATSHPRVIRISHQSEPVMMHMNIQDSGTQPGGVPSAPTGPLGPPGHGQTLGQQVPGFP
 TAPTRVVIARPTPPQARPSHPGGPPVSGTLQGAGLGTNASLAQMVSGLVGQLMQPVLVAQGT
 PGMAPPAPATASASAGTTNTATTAGPAPGGPAQPPPTPQPSMADLQFSQLLGNLLGPAGPGAGGPGVASPTITVAM
 PGVPAFLQGMTDFLQATQTAPPPPPPPPPPAPEQQTMPGGSPSGGAGSPGGLGLESLSPEFFTSVVQ
 GVLSSLGSLGARAGSSSIAAFIQRLSGSSNIFEPGADGALGFFGALLSLLCQNF
 SMVDVVMLLHGHFQPLQRLQPLRSFFHQHYLGGQEPTPSNIRMATHTLITGLEEYVRESFSLVQVQPGVDI
 IRTNLEFLQEQFNSIAAHVLHCTDSGFGARLLELCNQGLFECLALNLHCLGGQME
 LAAVINGRIRRMRSRVNPSLVSWLTTMMGLRLQVLEHMPVGPDAILRYVRRVGDPPQPLPEEPMEVQGAERASPEPQRENASPA
 GTTAEAMSRGPPPAEPPGSRDEQDGAETEPWAAA
 VPPEWVPIIQQDIQSQRKVKPQPLSDAYLSGMPAKRRKTMQGEGPQLLLSEAVSRAAKAAGARPLTSPE
 SLSRDLEAPEVQESYRQQLRSDIQKRLQEDPNYSPQRFPNAQR
 AFADDP

TRTRPLEQKLISEEDLAANDILDYKDDDDKV

Chromatograms: https://cdn.origene.com/chromatograms/mg2717_b01.zip

Restriction Sites: SgfI-MluI

Cloning Scheme:

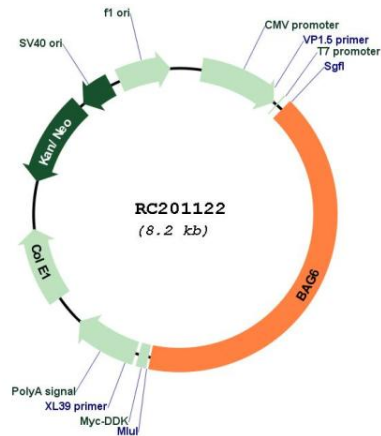


ACCN: NM_080702

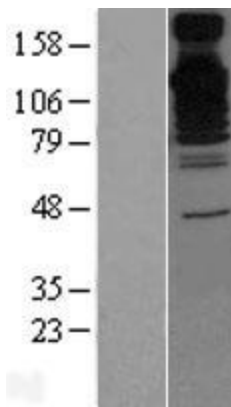
ORF Size: 3378 bp

OTI Disclaimer:	The molecular sequence of this clone aligns with the gene accession number as a point of reference only. However, individual transcript sequences of the same gene can differ through naturally occurring variations (e.g. polymorphisms), each with its own valid existence. This clone is substantially in agreement with the reference, but a complete review of all prevailing variants is recommended prior to use. More info
OTI Annotation:	This clone was engineered to express the complete ORF with an expression tag. Expression varies depending on the nature of the gene.
Components:	The ORF clone is ion-exchange column purified and shipped in a 2D barcoded Matrix tube containing 10ug of transfection-ready, dried plasmid DNA (reconstitute with 100 ul of water).
Reconstitution Method:	<ol style="list-style-type: none">1. Centrifuge at 5,000xg for 5min.2. Carefully open the tube and add 100ul of sterile water to dissolve the DNA.3. Close the tube and incubate for 10 minutes at room temperature.4. Briefly vortex the tube and then do a quick spin (less than 5000xg) to concentrate the liquid at the bottom.5. Store the suspended plasmid at -20°C. The DNA is stable for at least one year from date of shipping when stored at -20°C.
Note:	Plasmids are not sterile. For experiments where strict sterility is required, filtration with 0.22um filter is required.
RefSeq:	NM_080702.3
RefSeq Size:	3754 bp
RefSeq ORF:	3381 bp
Locus ID:	7917
UniProt ID:	P46379
Cytogenetics:	6p21.33
Domains:	UBQ
Protein Families:	Druggable Genome, Stem cell - Pluripotency
MW:	118.5 kDa
Gene Summary:	This gene was first characterized as part of a cluster of genes located within the human major histocompatibility complex class III region. This gene encodes a nuclear protein that is cleaved by caspase 3 and is implicated in the control of apoptosis. In addition, the protein forms a complex with E1A binding protein p300 and is required for the acetylation of p53 in response to DNA damage. Multiple transcript variants encoding different isoforms have been found for this gene. [provided by RefSeq, Jul 2008]

Product images:



Circular map for RC201122



Western blot validation of overexpression lysate (Cat# [LY409113]) using anti-DDK antibody (Cat# [TA50011-100]). Left: Cell lysates from untransfected HEK293T cells; Right: Cell lysates from HEK293T cells transfected with RC201122 using transfection reagent MegaTran 2.0 (Cat# [TT210002]).