

Product datasheet for **RC201117**

TFIIA2 (GTF2A2) (NM_004492) Human Tagged ORF Clone

Product data:

Product Type: Expression Plasmids
Product Name: TFIIA2 (GTF2A2) (NM_004492) Human Tagged ORF Clone
Tag: Myc-DDK
Symbol: TFIIA2
Synonyms: HsT18745; T18745; TF2A2; TFIIA; TFIIA-12; TFIIA-gamma; TFIAS
Mammalian Cell Selection: Neomycin
Vector: pCMV6-Entry (PS100001)
E. coli Selection: Kanamycin (25 ug/mL)
ORF Nucleotide Sequence: >RC201117 ORF sequence
Red=Cloning site Blue=ORF Green=Tags(s)

TTTTGTAATACGACTCACTATAGGGCGCCGGGAATTCGTCGACTGGATCCGGTACCGAGGAGATCTGCC
GCC**CGGATCGCC**

ATGGCATATCAGTTATACAGAAATACTACTTTGGGAAACAGTCTTCAGGAGAGCCTAGATGAGCTCATA
AGTCTCAACAGATCACCCCACTTGCCTTCAAGTTCTACTTCAGTTTGATAAGGCTATAAATGCAGC
ACTGGCTCAGAGGGTCAGGAACAGAGTCAATTCAGGGGCTCTCTAAATACGTACAGATTCTGCGATAAT
GTGTGGACTTTTGTACTGAATGATGTTGAATTCAGAGAGGTGACAGAATTATTAAGTGGATAAAGTGA
AAATTGTAGCCTGTGATGGTAAAAATACTGGCTCCAATACTACAGAA

ACGCGTACGCGGCCGCTCGAGCAGAAACTCATCTCAGAAGAGGATCTGGCAGCAAATGATATCCTGGATT
ACAAGGATGACGACGATAAGGTTTAA

Protein Sequence: >RC201117 protein sequence
Red=Cloning site Green=Tags(s)
MAYQLYRNTTLGNSLQESLDELISQSQITPQLALQVLLQFDKAINAALQVRNRVNFVFRGSLNTYRFCDN
VWTFVLDVDFREVTELIKVDKVKIVACDGKNTGSNTTE

TRTRPLEQKLISEEDLAANDILDYKDDDDKV

Chromatograms: https://cdn.origene.com/chromatograms/mk6408_d11.zip

Restriction Sites: SgfI-MluI



[View online »](#)

Cloning Scheme:


ACCN: NM_004492

ORF Size: 327 bp

OTI Disclaimer: The molecular sequence of this clone aligns with the gene accession number as a point of reference only. However, individual transcript sequences of the same gene can differ through naturally occurring variations (e.g. polymorphisms), each with its own valid existence. This clone is substantially in agreement with the reference, but a complete review of all prevailing variants is recommended prior to use. [More info](#)

OTI Annotation: This clone was engineered to express the complete ORF with an expression tag. Expression varies depending on the nature of the gene.

Components: The ORF clone is ion-exchange column purified and shipped in a 2D barcoded Matrix tube containing 10ug of transfection-ready, dried plasmid DNA (reconstitute with 100 ul of water).

- Reconstitution Method:**
1. Centrifuge at 5,000xg for 5min.
 2. Carefully open the tube and add 100ul of sterile water to dissolve the DNA.
 3. Close the tube and incubate for 10 minutes at room temperature.
 4. Briefly vortex the tube and then do a quick spin (less than 5000xg) to concentrate the liquid at the bottom.
 5. Store the suspended plasmid at -20°C. The DNA is stable for at least one year from date of shipping when stored at -20°C.

RefSeq: [NM_004492.3](#)

RefSeq Size: 1582 bp

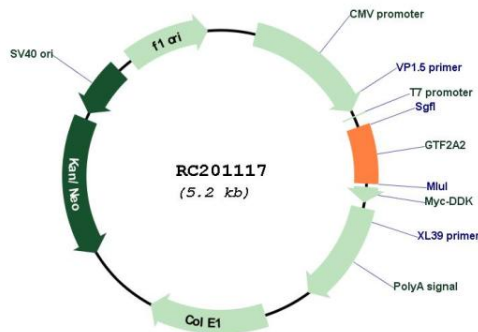
RefSeq ORF: 330 bp

Locus ID: 2958

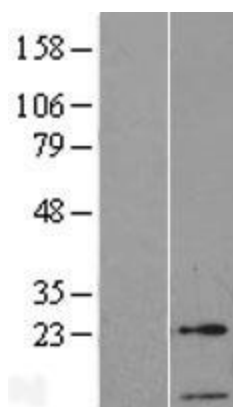
UniProt ID: [P52657](#)
Cytogenetics: 15q22.2
Domains: TFIIA_gamma
Protein Families: Transcription Factors
Protein Pathways: Basal transcription factors
MW: 12.5 kDa

Gene Summary: Accurate transcription initiation on TATA-containing class II genes involves the ordered assembly of RNA polymerase II (POLR2A; MIM 180660) and the general initiation factors TFIIA, TFIIIB (MIM 189963), TFIID (MIM 313650), TFIIE (MIM 189962), TFIIF (MIM 189968), TFIIG/TFIIJ, and TFIIH (MIM 189972). The first step involves recognition of the TATA element by the TATA-binding subunit (TBP; MIM 600075) and may be regulated by TFIIA, a factor that interacts with both TBP and a TBP-associated factor (TAF; MIM 600475) in TFIID. TFIIA has 2 subunits (43 and 12 kD) in yeast and 3 subunits in higher eukaryotes. In HeLa extracts, it consists of a 35-kD alpha subunit and a 19-kD beta subunit encoded by the N- and C-terminal regions of GTF2A1 (MIM 600520), respectively, and a 12-kD gamma subunit encoded by GTF2A2 (DeJong et al., 1995 [PubMed 7724559]).[supplied by OMIM, Mar 2008]

Product images:



Circular map for RC201117



Western blot validation of overexpression lysate (Cat# [LY417954]) using anti-DDK antibody (Cat# [TA50011-100]). Left: Cell lysates from untransfected HEK293T cells; Right: Cell lysates from HEK293T cells transfected with RC201117 using transfection reagent MegaTran 2.0 (Cat# [TT210002]).