

## Product datasheet for RC201113

### Rapsyn (RAPSN) (NM\_032645) Human Tagged ORF Clone

#### Product data:

Product Type:	Expression Plasmids
Product Name:	Rapsyn (RAPSN) (NM_032645) Human Tagged ORF Clone
Tag:	Myc-DDK
Symbol:	Rapsyn
Synonyms:	CMS4C; CMS11; FADS; FADS2; RAPSYN; RNF205
Mammalian Cell Selection:	Neomycin
Vector:	pCMV6-Entry (PS100001)
E. coli Selection:	Kanamycin (25 ug/mL)
ORF Nucleotide Sequence:	>RC201113 ORF sequence Red=Cloning site Blue=ORF Green=Tags(s)

TTTTGTAATACGACTCACTATAGGGCGCCGGGAATTCGTCGACTGGATCCGGTACCGAGGAGATCTGCC  
GCC**CGATCGCC**

ATGGGGCAGGACCAGACCAAGAAGCAGATCGAGAAGGGGCTCCAGCTGTACCAGTCCAACCAGACAGAGA  
AGGCATTGCAGGTGTGGACAAAGGTGCTGGAGAAGAGCTCGGACCTCATGGGGCGCTTCCGCGTGTGGG  
CTGCTGGTACAGCCACTCGGAGATGGGCCGCTACAAGGAGATGCTGAAGTTCGCTGTGGTCCAGATC  
GACACGGCCCGGAGCTGGAGGATGCCACTTCTCCTGGAGAGCTACCTGAACCTGGCAGCAGCAACG  
AGAAGCTGTGCGAGTTTACAAGACCATCTCCTACTGCAAGACCTGCCTTGGGCTGCCTGGTACCAGGGC  
AGGTGCCAGCTCGGAGGCCAGGTCAGCCTGAGCATGGGCAATGCCTTCTGGGCCTCAGCGTCTCCAG  
AAGGCCCTGGAGAGCTTCGAGAAGGCCCTGCGCTATGCCACAACAATGATGACGCCATGCTCGAGTGCC  
GCGTGTGCTGCAGCCTGGGCAGCTTCTATGCCAGGTC AAGGACTACGAGAAAGCCCTGTTCTTCCCTG  
CAAGGGCGCAGAGCTTGTCAACAATA TGGCAAAGGCTGGAGCCTGAAGTACCGGGCCATGAGCCAGTAC  
CACATGGCCGTGGCCTATCGCCTGCTGGGCCGCTGGGCAGTGCCATGGAGTGTGTGAGGAGTCTATGA  
AGATCGCGCTGCAGCACGGGGACCGCCACTGCAGGCGCTCTGCCTGCTGCTTGCCTGACATCCACCG  
GAGCCGTGGGGACCTGGAGCTGAGCCAGCTCAAGCTGCACTGTCTGAGCGAGAGCATTTACCGCAGCAA  
GGGCTGCAGCGGAACTCGGGCGCACGTTGTGAGGTTCCAGAGTGCGTGGAGGAGACGGAGCTACT  
CGGGCCTGTGCGGCGAGTCCATAGGCGAGAAGAACAGCCGGCTGCAGGCCCTACCTTGCTCCACATCTT  
CCACCTCAGTGCCTGCAGAACAACGGGACCCGGAGCTGTCCAACTGCCCGCTCATCCATGAAGCCT  
GGCTTTGTA

**ACGCGT**ACGCGGCCGCTCGAGCAGAACTCATCTCAGAAGAGGATCTGGCAGCAAATGATATCCTGGATT  
ACAAGGATGACGACGATAAGGTTTAA



[View online »](#)

**Protein Sequence:** >RC201113 protein sequence  
Red=Cloning site Green=Tags(s)

MGQDQTKKQIEKGLQLYQSNQTEKALQVWTKVLEKSSDLMGRFRVLGCLVTAHSEMGRYKEMLKFAVVQI  
 DTARELEDADFLLESYLNARSNEKLCEFHKTISYCKTCLGLPGTRAGQLGGQVSLSMGNAFLGLSVFQ  
 KALESEKALRYAHNDDAMLECRVCCSLGSFYAQVKDYEKALFFPCKAAELVNNYGKGSLSKYRAMSQY  
 HMAVAYRLLGRLGSAMECCESMKIALQHGRPLQALCLLFCFADIHRSRGDLELSQLKLHCLSESIYRSK  
 GLQRELRAHVVRFHCEVEETELYCGLCGESIGEKNRSLQALPCSHIFHLRCLQNNGTRSCPNCRRSSMKP  
 GFV

TRTRPLEQKLISEEDLAANDILDYKDDDDKV

**Chromatograms:** [https://cdn.origene.com/chromatograms/mk6083\\_e08.zip](https://cdn.origene.com/chromatograms/mk6083_e08.zip)

**Restriction Sites:** SgfI-MluI

**Cloning Scheme:**



\* The last codon before the Stop codon of the ORF

**ACCN:** NM\_032645

**ORF Size:** 1059 bp

**OTI Disclaimer:** The molecular sequence of this clone aligns with the gene accession number as a point of reference only. However, individual transcript sequences of the same gene can differ through naturally occurring variations (e.g. polymorphisms), each with its own valid existence. This clone is substantially in agreement with the reference, but a complete review of all prevailing variants is recommended prior to use. [More info](#)

**OTI Annotation:** This clone was engineered to express the complete ORF with an expression tag. Expression varies depending on the nature of the gene.

**Components:** The ORF clone is ion-exchange column purified and shipped in a 2D barcoded Matrix tube containing 10ug of transfection-ready, dried plasmid DNA (reconstitute with 100 ul of water).

**Reconstitution Method:**

1. Centrifuge at 5,000xg for 5min.
2. Carefully open the tube and add 100ul of sterile water to dissolve the DNA.
3. Close the tube and incubate for 10 minutes at room temperature.
4. Briefly vortex the tube and then do a quick spin (less than 5000xg) to concentrate the liquid at the bottom.
5. Store the suspended plasmid at -20°C. The DNA is stable for at least one year from date of shipping when stored at -20°C.

**RefSeq:** [NM\\_032645.2](#)

**RefSeq Size:** 1494 bp

**RefSeq ORF:** 1062 bp

**Locus ID:** 5913

**UniProt ID:** [Q13702](#)

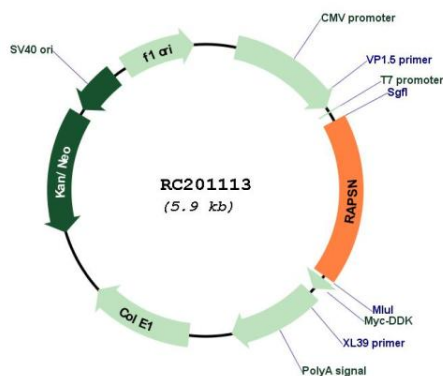
**Cytogenetics:** 11p11.2

**Protein Families:** Druggable Genome

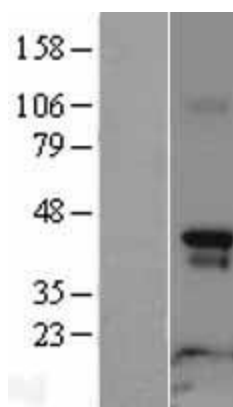
**MW:** 39.9 kDa

**Gene Summary:** This gene encodes a member of a family of proteins that are receptor associated proteins of the synapse. The encoded protein contains a conserved cAMP-dependent protein kinase phosphorylation site, and plays a critical role in clustering and anchoring nicotinic acetylcholine receptors at synaptic sites by linking the receptors to the underlying postsynaptic cytoskeleton, possibly by direct association with actin or spectrin. Mutations in this gene may play a role in postsynaptic congenital myasthenic syndromes. Alternatively spliced transcript variants encoding multiple isoforms have been observed for this gene. [provided by RefSeq, Apr 2011]

## Product images:



Circular map for RC201113



Western blot validation of overexpression lysate (Cat# [LY403186]) using anti-DDK antibody (Cat# [TA50011-100]). Left: Cell lysates from untransfected HEK293T cells; Right: Cell lysates from HEK293T cells transfected with RC201113 using transfection reagent MegaTran 2.0 (Cat# [TT210002]).