

## Product datasheet for RC201112

### PRA1 (RABAC1) (NM\_006423) Human Tagged ORF Clone

#### Product data:

**Product Type:** Expression Plasmids  
**Product Name:** PRA1 (RABAC1) (NM\_006423) Human Tagged ORF Clone  
**Tag:** Myc-DDK  
**Symbol:** PRA1  
**Synonyms:** PRA1; PRAF1; YIP3  
**Mammalian Cell Selection:** Neomycin  
**Vector:** pCMV6-Entry (PS100001)  
**E. coli Selection:** Kanamycin (25 ug/mL)  
**ORF Nucleotide Sequence:** >RC201112 ORF sequence  
 Red=Cloning site Blue=ORF Green=Tags(s)

TTTTGTAATACGACTCACTATAGGGCGGCCGGAATTCGTCGACTGGATCCGGTACCGAGGAGATCTGCC  
 GCC**CGATCGCC**

ATGGCAGCGCAGAAGGACCAGCAGAAAGATGCCGAGGCGGAAGGGCTGAGCGGCACGACCCTGCTGCCGA  
 AGCTGATTCCTCCGGTGCAGGCCGGGAGTGGCTGGAGCGGCCCGCGGACCATCCGGCCCTGGAGCAC  
 CTTCTGGACAGCAGCGCTTCTACGGCCCCGCAACCTGGGAGAGCTGTCCAGCGCCTCGTACGCAAC  
 GTGGAGTACTACCAGCAACTATGTGTTCTGTTCTCTGGCCTCATCCTGTACTGTGTGGTACGTCCTC  
 CTATGTTGCTGGTGGCTCTGGCTGCTTTTTCGGCGCCTGTTACATTCTCTATCTGCGCACCTTGGAGTC  
 CAAGCTTGTGCTCTTTGGCCGAGAGGTGAGCCCAGCGCATCAGTATGCTCTGGCTGGAGGCATCTCCTTC  
 CCCTTCTCTGGCTGGCTGGTGCAGGCTCGGCCGCTTCTGGGTGCTGGGAGCCACCCTGGTGGTTCATCG  
 GCTCCACGCTGCCTTCCACCAGATTGAGGCTGTGGACGGGGAGGAGCTGCAGATGGAACCCGTG

**ACGCGT**ACGCGGCCGCTCGAGCAGAACTCATCTCAGAAGAGGATCTGGCAGCAAATGATATCCTGGATT  
 ACAAGGATGACGACGATAAGGTTTAA

**Protein Sequence:** >RC201112 protein sequence  
 Red=Cloning site Green=Tags(s)

MAAQKDQKDAEAEGLSGTLLPKLIPSGAGREWLERRRATIRPWSTFVDQQRFSRPRNLGELCQRLVRN  
 VEYYQSNYVFLGLILYCVVTSPLLVALAVFFGACYILYLRTLESKLVLFGREVSPAHQYALAGGISF  
 PFFWLAGAGSAVFWLGATLVVIGSHAAFHQIEAVDGEELQMEPV

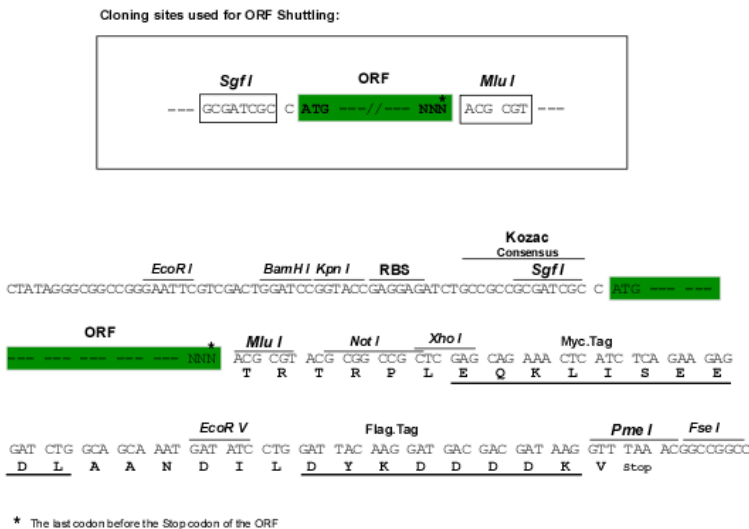
**TRTRPLEQKLISEEDLAANDILDYKDDDDKV**

**Chromatograms:** [https://cdn.origene.com/chromatograms/mk6085\\_e08.zip](https://cdn.origene.com/chromatograms/mk6085_e08.zip)



**Restriction Sites:** SgfI-MluI

**Cloning Scheme:**



**ACCN:** NM\_006423

**ORF Size:** 555 bp

**OTI Disclaimer:** The molecular sequence of this clone aligns with the gene accession number as a point of reference only. However, individual transcript sequences of the same gene can differ through naturally occurring variations (e.g. polymorphisms), each with its own valid existence. This clone is substantially in agreement with the reference, but a complete review of all prevailing variants is recommended prior to use. [More info](#)

**OTI Annotation:** This clone was engineered to express the complete ORF with an expression tag. Expression varies depending on the nature of the gene.

**Components:** The ORF clone is ion-exchange column purified and shipped in a 2D barcoded Matrix tube containing 10ug of transfection-ready, dried plasmid DNA (reconstitute with 100 ul of water).

**Reconstitution Method:**

1. Centrifuge at 5,000xg for 5min.
2. Carefully open the tube and add 100ul of sterile water to dissolve the DNA.
3. Close the tube and incubate for 10 minutes at room temperature.
4. Briefly vortex the tube and then do a quick spin (less than 5000xg) to concentrate the liquid at the bottom.
5. Store the suspended plasmid at -20°C. The DNA is stable for at least one year from date of shipping when stored at -20°C.

**Note:** Plasmids are not sterile. For experiments where strict sterility is required, filtration with 0.22um filter is required.

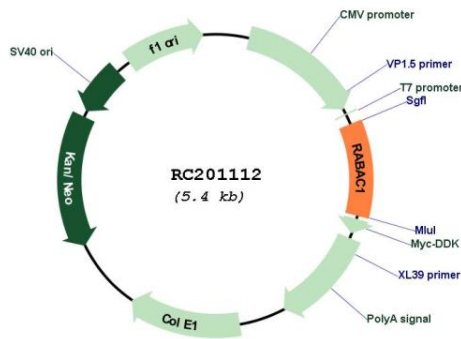
**RefSeq:** [NM\\_006423.3](#)

**RefSeq Size:** 821 bp

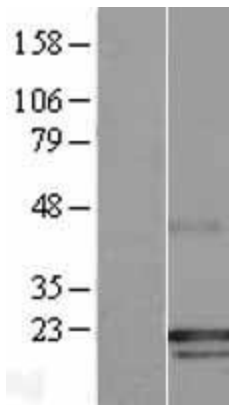
**RefSeq ORF:** 558 bp

**Locus ID:** 10567  
**UniProt ID:** [Q9UI14](#)  
**Cytogenetics:** 19q13.2  
**Domains:** PRA1  
**Protein Families:** Transmembrane  
**MW:** 20.6 kDa  
**Gene Summary:** General Rab protein regulator required for vesicle formation from the Golgi complex. May control vesicle docking and fusion by mediating the action of Rab GTPases to the SNARE complexes. In addition it inhibits the removal of Rab GTPases from the membrane by GDI. [UniProtKB/Swiss-Prot Function]

**Product images:**



Circular map for RC201112



Western blot validation of overexpression lysate (Cat# [LY401932]) using anti-DDK antibody (Cat# [TA50011-100]). Left: Cell lysates from untransfected HEK293T cells; Right: Cell lysates from HEK293T cells transfected with RC201112 using transfection reagent MegaTran 2.0 (Cat# [TT210002]).