

Product datasheet for **RC201107**

CCDC9 (NM_015603) Human Tagged ORF Clone

Product data:

Product Type:	Expression Plasmids
Product Name:	CCDC9 (NM_015603) Human Tagged ORF Clone
Tag:	Myc-DDK
Symbol:	CCDC9
Mammalian Cell Selection:	Neomycin
Vector:	pCMV6-Entry (PS100001)
E. coli Selection:	Kanamycin (25 ug/mL)



[View online »](#)

ORF Nucleotide Sequence:

>RC201107 representing NM_015603
 Red=Cloning site Blue=ORF Green=Tags(s)

TTTTGTAATACGACTCACTATAGGGCGGCCGGAATTCGTCGACTGGATCCGGTACCGAGGAGATCTGCC
 GCC**CGGATCGCC**

ATGGCAGCCACACTCGATTTGAAATCAAAGGAGGAGAAGGATGCTGAGTTGGACAAGAGGATCGAGGCTC
 TTCGGCGGAAGAATGAGGCCCTCATCCGCGCTACCAGGAGATTGAGGAAGACCGTAAGAAAGCTGAACT
 TGAGGGAGTCGCAGTCACAGCTCCCGAAAGGGCCGCTCAGTGGAGAAGGAGAACGTGGCAGTGGAGTCG
 GAGAAGAACCTGGGTCTTCCGGAGGTCTCTGGGACCCTCGGCCCCAGGGGCCAGCAAGGGGGCC
 GGACTCTCCACAGCAGGGAGGCCGGCCGGCATGGGCCGAGCATCGCGCAGCTGGGAGGCGAGCCCGG
 GGAGCAGCTCGAGGAGGAGGCTGGGGCCGTGGCCGAGGGGCCGGGGCCGAGGTTACCTCACCTC
 TCTGGAGCTGGAGACACCTCAATCTCTGACCGTAAATCCAAGGAGTGGGAGGAGCGGCGCAGGCAGAACA
 TTGAGAAGATGAATGAGGAGATGGAGAAGATCGCCGAGTATGAGCGCAACCAGCGGGAAGGGTTCTTGA
 ACCCAACCCAGTCCGGAACCTTCTGGACGACCCCGGCGACGCAGCGGGCCCTGGAGGAGTCTGAGCGG
 GACCGCCGGGAGGAGAGCCGCGCACGGCCGCAACTGGGGGGGCCCGACTTCGAGCGGTGCGCTGTG
 GCCTTGAGCACGAGCGGCAGGGCCGCGAGCTGGCCTGGGCACTGCTGGAGACATGACGTTGTCCATGAC
 GGGCCGGGAGCGGTCCGAGTACCTGCGCTGGAAGCAGGAGAGGGAGAAGATCGACCAGGAGCGGCTGCAG
 AGGCACCGCAAGCCCACTGGCCAGTGGAGGCGGAGTGGGATGCCGAGAAGACCGATGGGATGTTCAAGG
 ATGGCCAGTCCCTGCCATGAACCATCCACCGCTATGATGACCAGGCTGGGCCCGGCCCGGAAAGCC
 CCCTACTTTTGGGAGTTCCTGTCCAGCACAAGCTGAGGCCAGCAGCCGAGAAGGAGAAGAGCAGT
 CGGCCCCAGGCCAAGGCAGCGCCAGGGCTACAGTGACCATGATGACCGCTGGGAGACAAAAGAAGGGG
 CAGCATCCCGAGCCCTGAGACTCCACAGCTACTTCCCGGAGACTTCCCGCAAGGAGACCCCATGCA
 GCCACCGAGATCCAGCTCCTGCCACCGCCCTCCTGAAGACGAGGGGAAGAGAATGAGGGGGGAAGAG
 GATGAAGAATGGGAGGACATAAGTGAGGATGAGGAAGAGGAGGATCGAGGTGGAAGAAGTGATGAGG
 AGGAACCAGCCCAAGACCACCAAGCCCCAGAGGCTGCCCCACCGGGATCCCTGCACTGAGCAGGCCCA
 CGGAGTCCCTTTCAGTCCGGAGGAGCCCTGCTGGAGCCAGGCCCTGGCACGCTTCCAGCCCTTTC
 TCACCACCGAGCGCCACCAGCCTGTGTCCGATTGGGGTGAAGAGGTGGAGCTGAATTCTCCCGGACCA
 CTCACCTGGCTGGCGCCCTCTCCCGGGTGAAGGCTGGCCTTTTGAGAGTGA

ACGCGTACGCGGCCGCTCGAGCAGAACTCATCTCAGAAGAGGATCTGGCAGCAAATGATATCCTGGATT
 ACAAGGATGACGACGATAAGGTTTAA

Protein Sequence:

>RC201107 representing NM_015603
 Red=Cloning site Green=Tags(s)

MAATLDLKSKEEKDAELDKRIEALRRKNEALIRRYQEIIEEDRKKAELEGVAVTAPRKGRSVEKENVAVES
 EKNLGPSSRRSPGTPRPPGASKGGRTPPQQGGRAGMGRASRSWEGSPGEQPRGGGAGGRRRGRGRGSPHL
 SGAGDTSISDRKSKWEERRRQNIKMNEMEKIAEYERNQREGVLEPNPVRNFLDDPRRRSGPLEESER
 DRREESRRHGRNWGGPDFERVRCLEHERQRRAGLGSAGDMLSMGTGRESEYLRWKQEREKIDQERLQ
 RHRKPTGQWRREWDAEKTDMFMKDGVPVAHEPASHRYDDQAWARPPKPPFTGFEFLSQHKAEASRRRRKSS
 RPQAKAAPRAYSDHDDRWETKEGAASPAPETPQPTSPETSPKETPMQPPEIPAPAHRPPEDEGEENE
 DEEWEDISEDEEEEEIEVEEGDEEPAQDHAPEAAPTGIPCSEQAHGVPFSPEEPLLEPQAGTPSSPF
 SPPSGHQPVSDWGEEVELNSPRTHLAGALSPGEAWPFESV

TRTRPLEQKLISEEDLAANDILDYKDDDDKV

Chromatograms:

https://cdn.origene.com/chromatograms/mg3013_f07.zip

Restriction Sites:

Sgfl-Mlul

Cloning Scheme:

ACCN: NM_015603

ORF Size: 1593 bp

OTI Disclaimer: The molecular sequence of this clone aligns with the gene accession number as a point of reference only. However, individual transcript sequences of the same gene can differ through naturally occurring variations (e.g. polymorphisms), each with its own valid existence. This clone is substantially in agreement with the reference, but a complete review of all prevailing variants is recommended prior to use. [More info](#)

OTI Annotation: This clone was engineered to express the complete ORF with an expression tag. Expression varies depending on the nature of the gene.

Components: The ORF clone is ion-exchange column purified and shipped in a 2D barcoded Matrix tube containing 10ug of transfection-ready, dried plasmid DNA (reconstitute with 100 ul of water).

- Reconstitution Method:**
1. Centrifuge at 5,000xg for 5min.
 2. Carefully open the tube and add 100ul of sterile water to dissolve the DNA.
 3. Close the tube and incubate for 10 minutes at room temperature.
 4. Briefly vortex the tube and then do a quick spin (less than 5000xg) to concentrate the liquid at the bottom.
 5. Store the suspended plasmid at -20°C. The DNA is stable for at least one year from date of shipping when stored at -20°C.

RefSeq: [NM_015603.3](#)
RefSeq Size: 2026 bp

RefSeq ORF: 1596 bp

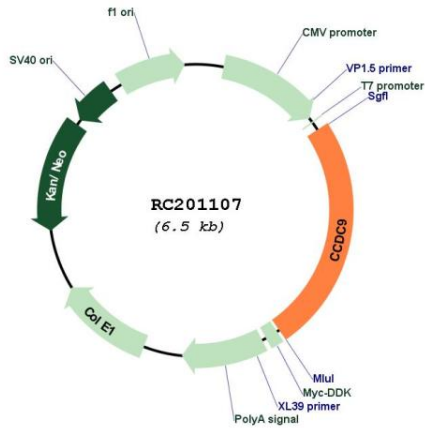
Locus ID: 26093

UniProt ID: [Q9Y3X0](#)

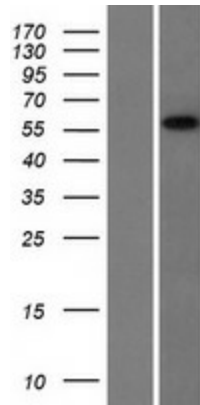
Cytogenetics: 19q13.32

MW: 59.5 kDa

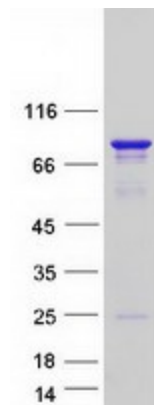
Product images:



Circular map for RC201107



Western blot validation of overexpression lysate (Cat# [LY414450]) using anti-DDK antibody (Cat# [TA50011-100]). Left: Cell lysates from untransfected HEK293T cells; Right: Cell lysates from HEK293T cells transfected with RC201107 using transfection reagent MegaTran 2.0 (Cat# [TT210002]).



Coomassie blue staining of purified CCDC9 protein (Cat# [TP301107]). The protein was produced from HEK293T cells transfected with CCDC9 cDNA clone (Cat# RC201107) using MegaTran 2.0 (Cat# [TT210002]).