

Product datasheet for **RC201106**

CIKS (TRAF3IP2) (NM_147686) Human Tagged ORF Clone

Product data:

Product Type:	Expression Plasmids
Product Name:	CIKS (TRAF3IP2) (NM_147686) Human Tagged ORF Clone
Tag:	Myc-DDK
Symbol:	CIKS
Synonyms:	ACT1; C6orf2; C6orf4; C6orf5; C6orf6; CANDF8; CIKS; PSORS13
Mammalian Cell Selection:	Neomycin
Vector:	pCMV6-Entry (PS100001)
E. coli Selection:	Kanamycin (25 ug/mL)



[View online »](#)

ORF Nucleotide Sequence:

>RC201106 ORF sequence
 Red=Cloning site Blue=ORF Green=Tags(s)

TTTTGTAATACGACTCACTATAGGGCGGCCGGGAATTCGTCGACTGGATCCGGTACCGAGGAGATCTGCC
 GCC**CGGATCGCC**

ATGAACCGAAGCATTCTGTGGAGTTGATGAATCAGAACCATACCCAAGTCAGTTGCTGAAACCAATCC
 CAGAATATTTCCCGGAAGAGGAATCAGAACCACCTGCTCCAAATAAAGGAACATGGCACCAACAGCTT
 GTCTGCACCCACAATGCTTCACAATTCCTCGGAGACTTTTCTCAAGCTCACTCAACCCTGAAACTTGCA
 AATCACCAGCGCCTGTATCCCGGCAGGTACCTGCCTGCGCACTCAAGTTCTGGAGGACAGTGAAGACA
 GTTTCTGCAGGAGACACCCAGGCCTGGGCAAAGCTTCCCTTCTGGGTGCTCTGCAGTCAGCGAGCCTGC
 GTCTGAGTCTGTGGTTGGAGCCCTCCCTGCAGAGCATCAGTTTTTCATTTATGGAAAAACGTAATCAATGG
 CTGGTATCTCAGCTTTCAGCGGCTTCTCCTGACACTGGCCATGACTCAGACAAATCAGACCAAAGTTTAC
 CTAATGCCTCAGCAGACTCCTTGGGCGGTAGCCAGGAGATGGTGAACGGCCCCAGCCTCACAGGAACCG
 AGCAGGCCTGGATCTGCCAACCATAGACACGGGATATGATTCCCAGCCCCAGGATGCTCTGGGCATCAGG
 CAGCTGGAAAGGCCCTGCCCTCACCTCGTGTGTACCCCCAGGACCTCCCCAGACCTCTCAGGTCCA
 GGGAGTCCCTCAGTTTGAACCTCAGAGGTATCCAGCATGTGCACAGATGCTGCCTCCCAATCTTTCCCC
 ACATGCTCCATGGAACATCATTACCATTTGCTGGAAGTCCCGATCACCAGGTGCCATATGGCCATGAC
 TACCCTCGAGCAGCCTACCAGCAAGTGATCCAGCCGGCTCTGCCTGGGCAGCCCCGCCTGGAGCCAGTG
 TGAGAGGCCTGCACCTGTGCAGAAGGTTATCCTGAATTATCCCAGCCCCGGGACCAAGAAGAGAGGCC
 CGCACAGAGAGACTGCTCCTTCCGGGGCTTCCAAGGCACCAGGACCAGCCACATCACCAGCCACCTAAT
 AGAGCTGGTGTCTCTGGGAGTCTTGGAGTGCCTGCAGAGCTGAGACCACAGGTTCCCCAGCCTCCGT
 CCCAGCTGCTGTGCCTAGACCCCTAGCAACCTCCAGCCAGAGGAACTCTAAAAACAAGCAATTTGCC
 AGAAGAATTGCGGAAAGCTTTATCACTTATTCGATGGACACAGCTATGGAGGTGGTGAATTCGTGAAC
 TTTTTGTTGGTAAATGGCTTCCAAACTGCAATTGACATATTTGAGGATAGAATCCGAGGCATTGATATCA
 TTAATGGATGGAGCGCTACCTTAGGGATAAGACCGTGATGATAATCGTAGCAATCAGCCCCAAATACAA
 ACAGGACGTGGAAGGCGCTGAGTCGAGCTGGACGAGGATGAGCATGGCTTACATACTAAGTACATTCAT
 CGAATGATGCAGATTGAGTTCATAAAACAAGGAAGCATGAATTTAGATTATCCCTGTGCTCTTCCCAA
 ATGCTAAGAAGGAGCATGTGCCACCTGGCTTCAAGCACTCATGTCTACAGCTGGCCCAAGAATAAAAA
 AAACATCTGCTGCGGCTGCTGAGAGAGGAAGATATGTGGCTCTCCACGGGGGCTCTGCCACCCCTT
 CAGGTGGTCCCTTG

ACGCGTACGCGGGCCGCTCGAGCAGAAACTCATCTCAGAAGAGGATCTGGCAGCAAATGATATCCTGGATT
 ACAAGGATGACGACGATAAGGTTTAA

Protein Sequence:

>RC201106 protein sequence
 Red=Cloning site Green=Tags(s)

MNRSIPVEVDESEPYPSQLLKPIPEYSPEESEPPAPNIRNMAPNSLSAPTMLHNSSGDFSQAHSTLKLA
 NHQRPVSRQVTCLRTQVLESEDSFCRRHPGLGKAFPSGCSAVSEPAESVVGALPAEHQFSFMEKRNQW
 LVSQLSAASPDTGHSDKSDQSLPNASADSLGGSQEMVQRPQPHRNAGLDLPTIDTGYDSQPQDVLGIR
 QLERPLPLTSVCYPQDLPRPLRSREFPQFEPQRYPACAQMLPPNLSHPAPWNYHYHCPGSPDHQVPYGH
 YPRAAYQVVIQPALPGQPLPGASVRGLHPVQKVIILNYSPWDQEERPAQRDCSFPGLPRHQDQPHHQP
 PNRAGAPGESLECPAELRPQVPQPPSPAAPRPPSNPPARGTLKTSNLPEELRKVFIITYSMDTAMEVVKFVN
 FLLVNGFQTAIDIFEDRIRGIDIKWMERYLRDKTVMIIVAISPKYKQDVEGAESQLDEDEHGLHTKYIH
 RMMQIEFIKQGS MNFRFIPVLPFNAKKEHVPTWLQNTHVYSWPKNKNILLRLLREEEYVAPPRGPLPTL
 QVVPL

TRTRPLEQKLISEEDLAANDILDYKDDDDKV

Chromatograms:

https://cdn.origene.com/chromatograms/mk6572_e06.zip

Restriction Sites:

Sgfl-Mlul

Cloning Scheme:


ACCN: NM_147686

ORF Size: 1695 bp

OTI Disclaimer: The molecular sequence of this clone aligns with the gene accession number as a point of reference only. However, individual transcript sequences of the same gene can differ through naturally occurring variations (e.g. polymorphisms), each with its own valid existence. This clone is substantially in agreement with the reference, but a complete review of all prevailing variants is recommended prior to use. [More info](#)

OTI Annotation: This clone was engineered to express the complete ORF with an expression tag. Expression varies depending on the nature of the gene.

Components: The ORF clone is ion-exchange column purified and shipped in a 2D barcoded Matrix tube containing 10ug of transfection-ready, dried plasmid DNA (reconstitute with 100 ul of water).

- Reconstitution Method:**
1. Centrifuge at 5,000xg for 5min.
 2. Carefully open the tube and add 100ul of sterile water to dissolve the DNA.
 3. Close the tube and incubate for 10 minutes at room temperature.
 4. Briefly vortex the tube and then do a quick spin (less than 5000xg) to concentrate the liquid at the bottom.
 5. Store the suspended plasmid at -20°C. The DNA is stable for at least one year from date of shipping when stored at -20°C.

Note: Plasmids are not sterile. For experiments where strict sterility is required, filtration with 0.22um filter is required.

RefSeq: [NM_147686.1](#), [NP_679211.1](#)

RefSeq Size: 6244 bp

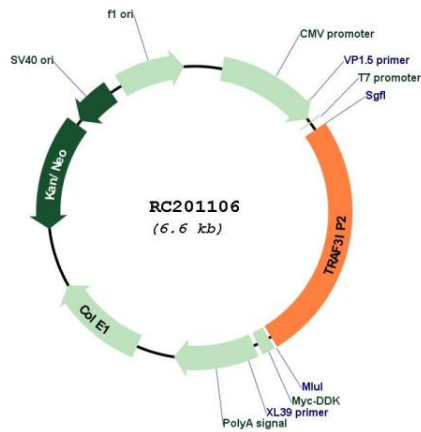
RefSeq ORF: 1698 bp

Locus ID: 10758

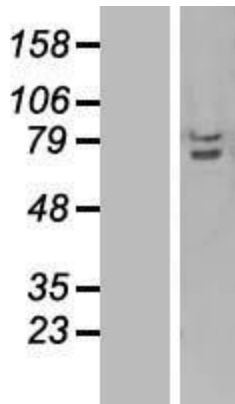
UniProt ID: [O43734](#)
 Cytogenetics: 6q21
 MW: 63.6 kDa

Gene Summary: This gene encodes a protein involved in regulating responses to cytokines by members of the Rel/NF-kappaB transcription factor family. These factors play a central role in innate immunity in response to pathogens, inflammatory signals and stress. This gene product interacts with TRAF proteins (tumor necrosis factor receptor-associated factors) and either I-kappaB kinase or MAP kinase to activate either NF-kappaB or Jun kinase. Several alternative transcripts encoding different isoforms have been identified. Another transcript, which does not encode a protein and is transcribed in the opposite orientation, has been identified. Overexpression of this transcript has been shown to reduce expression of at least one of the protein encoding transcripts, suggesting it has a regulatory role in the expression of this gene. [provided by RefSeq, Aug 2009]

Product images:



Circular map for RC201106



Western blot validation of overexpression lysate (Cat# [LY407798]) using anti-DDK antibody (Cat# [TA50011-100]). Left: Cell lysates from untransfected HEK293T cells; Right: Cell lysates from HEK293T cells transfected with RC201106 using transfection reagent MegaTran 2.0 (Cat# [TT210002]).