

Product datasheet for **RC201103**

ARPC1B (NM_005720) Human Tagged ORF Clone

Product data:

Product Type:	Expression Plasmids
Product Name:	ARPC1B (NM_005720) Human Tagged ORF Clone
Tag:	Myc-DDK
Symbol:	ARPC1B
Synonyms:	ARC41; IMD71; p40-ARC; p41-ARC; PLTEID
Mammalian Cell Selection:	Neomycin
Vector:	pCMV6-Entry (PS100001)
E. coli Selection:	Kanamycin (25 ug/mL)
ORF Nucleotide Sequence:	>RC201103 ORF sequence Red=Cloning site Blue=ORF Green=Tags(s)

TTTTGTAATACGACTCACTATAGGGCGGCCGGAATTCGTCGACTGGATCCGGTACCGAGGAGATCTGCC
GCC**CGATCGCC**

ATGGCCTACCACAGTTCTGGTGGAGCCATCAGCTGCCACGCCTGGAACAAGGACCGCACCCAGATTG
CCATCTGCCCAACAACCATGAGGTGCATATCTATGAAAAGAGCGGTGCCAAATGGACCAAGGTGCACGA
GCTCAAGGAGCACAACGGGCAGGTGACAGGCATCGACTGGGCCCCGAGAGTAACCGTATTGTGACCTGC
GGCACAGACCGCAACGCCTACGTGTGGACGCTGAAGGGCCGCACATGGAAGCCCACGCTGGTCATCTGC
GGATCAACCGGGCTGCCGCTGCGTGGCTGGGCCCCCAACGAGAACAAGTTTGCTGTGGGCAGCGGCTC
TCGTGTGATCTCCATCTGTTATTTTCGAGCAGGAGAATGACTGGTGGGTTTGAAGCACATCAAGAAGCCC
ATCCGCTCCACCGTCTCAGCCTGGACTGGCACCCCAACAATGTGCTGCTGGCTGCCGGCTCCTGTGACT
TCAAGTGTTCGGATCTTTTCAGCCTACATCAAGGAGGTGGAGGAACGGCCGGCACCCACCCCGTGGGGCTC
CAAGATGCCCTTTGGGAACTGATGTTTCAATCCAGCAGTAGCTGCGGCTGGGTACATGGCGTCTGTTTC
TCAGCCAGCGGGAGCCGCTGGCTGGTAAGCCACGACAGCACCGTCTGCCTGGCTGATGCCGACAAGA
AGATGGCCGTTCGCGACTCTGGCCTCTGAAACACTACCACTGCTGGCGTACCTTCATCAGACAAACAG
CCTGGTGGCAGCGGGCCACGACTGCTCCCGGTGCTGTTACCTATGACGCCCGCGGGGATGCTGAGC
TTCGGCGGGCGGCTGGACGTTCCCTAAGCAGAGCTCGCAGCGTGGCTTGACGGCCCGGAGCGCTCCAGA
ACCTGGACAAGAAGCGAGCTCCGAGGGTGGCACGGCTGCGGGCCGCGGGCCTAGACTCGCTGCACAAGAA
CAGCGTCAGCCAGATCTCGGTGCTCAGCGCGGCAAGGCCAAGTCTCGAGTTCTGCACCACTGGCATG
GATGGCGCATGAGTATCTGGGATGTGAAGAGCTTGGAGTCAAGCCTGAAGGACCTCAAGATCAA

ACGCGTACGCGGCCGCTCGAGCAGAACTCATCTCAGAAGAGGATCTGGCAGCAAATGATATCCTGGATT
ACAAGGATGACGACGATAAGGTTTAA



[View online »](#)

Protein Sequence: >RC201103 protein sequence
Red=Cloning site Green=Tags(s)

MAYHSFLVEPISCHAWNKDRTQIAICPNNEVHIYEKSGAKWTKVHELKEHNGQVTGIDWAPESNRIVTC
 GTDRNAYVWTLKGRTWKPTLVILRINRAARCVRWAPNENKFAVSGSRVISICYFEQENDWWVCKHIKPK
 IRSTVLSLDWHPNNVLLAAGSCDFKCRIF SAYIKEVEERPAPTWPWGSKMPPGELMFESSSSCGWVHGVCF
 SASGSRVAWVSHDSTVCLADADKKMAVATLASETLPLLALTFITDNSLVAAGHDCFPVLFYDAAAGMLS
 FGGRLDVPKQSSQRGLTARERFQNLDDKASSEGTAAGAGLDSLHKNSVSI SVLSGGKAKCSQFCTTGM
 DGGMSIWDVKSLESALKDLKIK

TRTRPLEQKLISEEDLAANDILDYKDDDDKV

Chromatograms: https://cdn.origene.com/chromatograms/mk6557_h01.zip

Restriction Sites: SgfI-MluI

Cloning Scheme:



* The last codon before the Stop codon of the ORF

ACCN: NM_005720

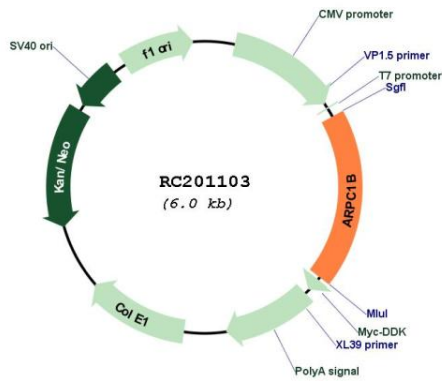
ORF Size: 1116 bp

OTI Disclaimer: Due to the inherent nature of this plasmid, standard methods to replicate additional amounts of DNA in E. coli are highly likely to result in mutations and/or rearrangements. Therefore, OriGene does not guarantee the capability to replicate this plasmid DNA. Additional amounts of DNA can be purchased from OriGene with batch-specific, full-sequence verification at a reduced cost. Please contact our customer care team at custsupport@origene.com or by calling 301.340.3188 option 3 for pricing and delivery.

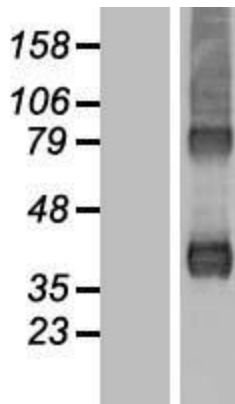
The molecular sequence of this clone aligns with the gene accession number as a point of reference only. However, individual transcript sequences of the same gene can differ through naturally occurring variations (e.g. polymorphisms), each with its own valid existence. This clone is substantially in agreement with the reference, but a complete review of all prevailing variants is recommended prior to use. [More info](#)

OTI Annotation:	This clone was engineered to express the complete ORF with an expression tag. Expression varies depending on the nature of the gene.
Components:	The ORF clone is ion-exchange column purified and shipped in a 2D barcoded Matrix tube containing 10ug of transfection-ready, dried plasmid DNA (reconstitute with 100 ul of water).
Reconstitution Method:	<ol style="list-style-type: none">1. Centrifuge at 5,000xg for 5min.2. Carefully open the tube and add 100ul of sterile water to dissolve the DNA.3. Close the tube and incubate for 10 minutes at room temperature.4. Briefly vortex the tube and then do a quick spin (less than 5000xg) to concentrate the liquid at the bottom.5. Store the suspended plasmid at -20°C. The DNA is stable for at least one year from date of shipping when stored at -20°C.
RefSeq:	NM_005720.4
RefSeq Size:	1551 bp
RefSeq ORF:	1119 bp
Locus ID:	10095
UniProt ID:	O15143
Cytogenetics:	7q22.1
Domains:	WD40
Protein Pathways:	Fc gamma R-mediated phagocytosis, Pathogenic Escherichia coli infection, Regulation of actin cytoskeleton
MW:	40.9 kDa
Gene Summary:	This gene encodes one of seven subunits of the human Arp2/3 protein complex. This subunit is a member of the SOP2 family of proteins and is most similar to the protein encoded by gene ARPC1A. The similarity between these two proteins suggests that they both may function as p41 subunit of the human Arp2/3 complex that has been implicated in the control of actin polymerization in cells. It is possible that the p41 subunit is involved in assembling and maintaining the structure of the Arp2/3 complex. Multiple versions of the p41 subunit may adapt the functions of the complex to different cell types or developmental stages. This protein also has a role in centrosomal homeostasis by being an activator and substrate of the Aurora A kinase. [provided by RefSeq, Mar 2011]

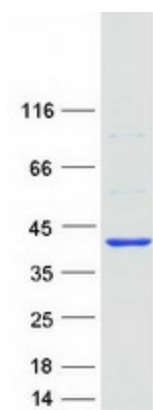
Product images:



Circular map for RC201103



Western blot validation of overexpression lysate (Cat# [LY417112]) using anti-DDK antibody (Cat# [TA50011-100]). Left: Cell lysates from untransfected HEK293T cells; Right: Cell lysates from HEK293T cells transfected with RC201103 using transfection reagent MegaTran 2.0 (Cat# [TT210002]).



Coomassie blue staining of purified ARPC1B protein (Cat# [TP301103]). The protein was produced from HEK293T cells transfected with ARPC1B cDNA clone (Cat# RC201103) using MegaTran 2.0 (Cat# [TT210002]).