

Product datasheet for RC201102

DHRS2 (NM_182908) Human Tagged ORF Clone

Product data:

Product Type:	Expression Plasmids
Product Name:	DHRS2 (NM_182908) Human Tagged ORF Clone
Tag:	Myc-DDK
Symbol:	DHRS2
Synonyms:	HEP27; SDR25C1
Mammalian Cell Selection:	Neomycin
Vector:	pCMV6-Entry (PS100001)
E. coli Selection:	Kanamycin (25 ug/mL)
ORF Nucleotide Sequence:	>RC201102 ORF sequence Red=Cloning site Blue=ORF Green=Tags(s)

TTTGTGTAATACGACTCACTATAGGGCGGCCGGAATTCGTCGACTGGATCCGGTACCGAGGAGATCTGCC
 GCC**CGGATCGCC**

ATGCTGTCAGCAGTTGCCCGGGCTACCAGGGCTGGTTTCATCCCTGTGCTAGGCTTTCTGTGAGGATGA
 GCAGCACCGGGATAGACAGGAAGGGCGTCCTGGCTAACCGGGTAGCCGTGGTCACGGGGTCCACAGTGG
 GATCGGCTTTGCCATCGCCGACGTCTGGCCGGGACGGGGCCACGTGGTCATCAGCAGCCGGAAGCAG
 CAGAACGTGGACCGGGCCATGGCCAAGCTGCAGGGGGAGGGGCTGAGTGTGGCGGGCATTGTGTGCCACG
 TGGGGAAGGCTGAGGACCGGGAGCAGCTGGTGGCCAAGGCCCTGGAGCACTGTGGGGCGTCGACTTCCT
 GGTGTGCAGCGCAGGGGTCAACCTCTGGTAGGGAGCACTCTGGGGACCACTGAGCAGATCTGGGACAAG
 ATCCTAAGTGTGAACGTGAAGTCCCCAGCCCTGCTGCTGAGCCAGTTGCTGCCCTACATGGAGAACAGGA
 GGGGTGCTGTATCCTGGTCTCTTCCATTGCAGCTTATAATCCAGTAGTGGCGCTGGGTGTCTACATGT
 CAGCAAGACAGCGCTGCTGGGTCTCACTAGAACACTGGCATTGGAGCTGGCCCCAAGGACATCCGGGTA
 AACTGCGTGGTTCCAGGAATTATCAAACTGACTTCAGCAAAGTGGTGAGGATTGGTTTCATGGGAATGA
 GTCTCTCTGGAAGAACTCAAGGAACATCATCAGCTGCAGAGGATTGGGGAGTCAGAGGACTGTGCAGGA
 ATCGTGTCTCTCTGTGCTCTCCAGATGCCAGCTACGTCAACGGGGAGAACATTGCGGTGGCAGGCTACT
 CCACTCGGCTCTGAGAGGAGTGGGGCGGCTGCGTAGCTGTGGTCCCAGGCCAGGAGCC

ACGCGTACGCGGGCGCTCGAGCAGAACTCATCTCAGAAGAGGATCTGGCAGCAAATGATATCCTGGATT
 ACAAGGATGACGACGATAAGGTTTAA


[View online »](#)

Protein Sequence: >RC201102 protein sequence
 Red=Cloning site Green=Tags(s)

MLSAVARGYQGWFHPCARLSVRMSSTGIDRKGVLNRVAVVTGSTSGIGFAIARRLRDGAHVVISSRKQ
 QNVDRAMAKLQGEGLSVAGIVCHVGKAEDREQLVAKALEHCGGVDFLVCSAGVNPLVGSTLGTSEQIWDK
 ILSVNVKSPALLLSQLLPYMNRRGAVILVSSIAAYNPVVALGVYVNSKTALLGLTRTLALELAPKDIRV
 NCVVPGIIKTDFSKVVRIGFMGMSLSGRTSRNIIISCRGLGSQRTVQESCPSCALQMPATSTGRTLWQAT
 PLGSERSGGGCVAVVPGPGA

TRTRPLEQKLISEEDLAANDILDYKDDDDKV

Chromatograms: https://cdn.origene.com/chromatograms/mk6706_h02.zip

Restriction Sites: SgfI-MluI

Cloning Scheme:



ACCN: NM_182908

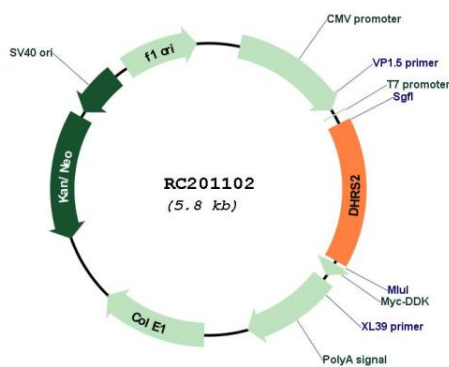
ORF Size: 900 bp

OTI Disclaimer: Due to the inherent nature of this plasmid, standard methods to replicate additional amounts of DNA in E. coli are highly likely to result in mutations and/or rearrangements. Therefore, OriGene does not guarantee the capability to replicate this plasmid DNA. Additional amounts of DNA can be purchased from OriGene with batch-specific, full-sequence verification at a reduced cost. Please contact our customer care team at custsupport@origene.com or by calling 301.340.3188 option 3 for pricing and delivery.

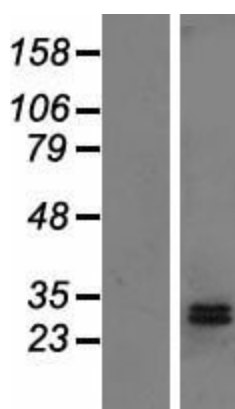
The molecular sequence of this clone aligns with the gene accession number as a point of reference only. However, individual transcript sequences of the same gene can differ through naturally occurring variations (e.g. polymorphisms), each with its own valid existence. This clone is substantially in agreement with the reference, but a complete review of all prevailing variants is recommended prior to use. [More info](#)

OTI Annotation:	This clone was engineered to express the complete ORF with an expression tag. Expression varies depending on the nature of the gene.
Components:	The ORF clone is ion-exchange column purified and shipped in a 2D barcoded Matrix tube containing 10ug of transfection-ready, dried plasmid DNA (reconstitute with 100 ul of water).
Reconstitution Method:	<ol style="list-style-type: none"> 1. Centrifuge at 5,000xg for 5min. 2. Carefully open the tube and add 100ul of sterile water to dissolve the DNA. 3. Close the tube and incubate for 10 minutes at room temperature. 4. Briefly vortex the tube and then do a quick spin (less than 5000xg) to concentrate the liquid at the bottom. 5. Store the suspended plasmid at -20°C. The DNA is stable for at least one year from date of shipping when stored at -20°C.
Note:	Plasmids are not sterile. For experiments where strict sterility is required, filtration with 0.22um filter is required.
RefSeq:	<u>NM_182908.4</u>
RefSeq Size:	1709 bp
RefSeq ORF:	903 bp
Locus ID:	10202
UniProt ID:	<u>Q13268</u>
Cytogenetics:	14q11.2
Protein Families:	Druggable Genome
MW:	31.5 kDa
Gene Summary:	This gene encodes a member of the short-chain dehydrogenases/reductases (SDR) family, which has over 46,000 members. Members of this family are enzymes that metabolize many different compounds, such as steroid hormones, prostaglandins, retinoids, lipids and xenobiotics. Alternative promoter use and alternative splicing results in multiple transcript variants. [provided by RefSeq, Feb 2017]

Product images:



Circular map for RC201102



Western blot validation of overexpression lysate (Cat# [LY405322]) using anti-DDK antibody (Cat# [TA50011-100]). Left: Cell lysates from untransfected HEK293T cells; Right: Cell lysates from HEK293T cells transfected with RC201102 using transfection reagent MegaTran 2.0 (Cat# [TT210002]).