

Product datasheet for **RC201101**

ALG3 (NM_005787) Human Tagged ORF Clone

Product data:

Product Type:	Expression Plasmids
Product Name:	ALG3 (NM_005787) Human Tagged ORF Clone
Tag:	Myc-DDK
Symbol:	ALG3
Synonyms:	CDG1D; CDGS4; CDGS6; D16Erttd36e; not; Not56; NOT56L
Mammalian Cell Selection:	Neomycin
Vector:	pCMV6-Entry (PS100001)
E. coli Selection:	Kanamycin (25 ug/mL)



[View online »](#)

ORF Nucleotide Sequence:

>RC201101 ORF sequence
 Red=Cloning site Blue=ORF Green=Tags(s)

TTTTGTAATACGACTCACTATAGGGCGGCCGGGAATTCGTCGACTGGATCCGGTACCGAGGAGATCTGCC
 GCC**CGGATCGCC**

ATGGCGGCTGGGCTGCGGAAACGCGGCCGGTCCGGTTCGCGGCCAGGCAGAGGGACTCTGCAAGCAAT
 GGCTGCAGCGCGCTGGCAAGAGCGGCGCTGCTGCTGCGGGAGCCGCGCTACACGCTGCTGGTGGCCGC
 CTGCCTCTGCCTGGCGGAGGTGGGCATCACCTTCTGGGTCAATCACAGGGTGGCATAACAGAGATTGAC
 TGGAAAGCCTACATGGCCGAGGTAGAAGGCGTCATCAATGGTACCTATGACTATACCCAACCTGCAGGGTG
 ACACCGGACCACTTGTGTACCCAGCTGGTTTCGTGTACATCTTTATGGGTTGTAATGCCACAGCCG
 AGGCACTGACATCCGCATGGCCAGAACATCTTGTGTGCTCTACCTGGCTACCTTGTGCTTGTCTTC
 TTGATCTATCACCAGACCTGCAAGGTACCTCCCTTCGTCTTTTCTTCATGTGCTGCGCCTTTACCGTG
 TCCACTCCATCTTGTGCTGCGGCTCTCAATGACCCAGTGGCCATGGTGTGCTCTTCTCAGTATCAA
 CCTCTGCTGGCCAGCGCTGGGCTGGGTTGCTGCTTTTTCAGCCTGGCAGTCTCTGTGAAGATGAAT
 GTGCTGCTCTTCGCCCTGGGTTACTGTTTCTTCTCTCACACAGTTTGGCTTCGGTGGGCCCCCTCCCA
 AGCTGGGAATCTGTGCTGGCCTCAGGTGGTGGTGGGCTGCCCTTCTGCTGGAGAACCCAGCGGCTA
 CCTGTCCCCTCCTTTGACCTTGGCCGCCAGTTTCTGTCCACTGGACAGTGAATGGCGCTTCTCCCA
 GAGGCGCTCTTCTGCATCGAGCCTTCCACCTGGCCCTGTTGACTGCCACCTCACCTGCTCCTGCTGT
 TTGCCCTCTGCAGGTGGCACAGGACAGGGGAAAGTATCTTGTGCTGCTGAGGGATCCCTCCAAAAGGAA
 GGTTCCACCCAGCCCCACACCAACAGATCGTTTCTACCCTTTCACCTCCAATTCATTGGCATC
 TGCTTCAGCCGCTCCCTCCTACTACAGTTCTACGTCTGGTATTTCCACACACTGCCCTACCTCCTGTGG
 CCATGCCGACGCTGGCTCACACACTGCTCAGGTTGTTGGTGTGGGCTCATCGAGCTCTCCTGGAA
 CACATACCCTTCCACATCTGCAGCTCTGCTGCCCTGCACATATGCCATGCCGTCATCCTGCTGCAGCTC
 TGCTGGGCCGAGCCTTTCCCAAGAGCACCAACACAGCAAGAAAGCCAC

ACGCGTACGCGGCCGCTCGAGCAGAACTCATCTCAGAAGAGGATCTGGCAGCAATGATATCCTGGATT
 ACAAGGATGACGACGATAAGGTTTAA

Protein Sequence:

>RC201101 protein sequence
 Red=Cloning site Green=Tags(s)

MAAGLRKRGRSGSAAQAEGLCKQLQRAWQERRLLLREPRYTLLVAACLCLAEVGITFWIHRVAYTEID
 WKAYMAEVEGVINGTYDYTLQGDGTPLYYPAGFVYIFMGLYYATSRGDIRMAQNI FAVLYLATLLLVF
 LIYHQTKVPPFVFFMCCASYRVHSIFVLRFLNDPVMVLLFLSINLLLAQRWGWGCCFFSLAVSVKMN
 VLLFAPGLLFLLLTQFGFRGALPKLGICAGLQVVLGLPFLEENPSGYLSRSFDLGRQFLFHWTVNRFLP
 EALFLHRAFLALLTAHLTLLLLFALCRWHRTGESILSLLRDPKRKVPQP LTPNQIVSTLFTSNFIGI
 CFSRSLHYQFYVWYFHTLPYLLWAMPARWLTHLLRLLVGLIELSWNTYPSTSCSSAALHICHAVILLQL
 WLGPQFPFKSTQHSSKAH

TRTRPLEQKLISEEDLAANDILDYKDDDDKV

Chromatograms:

https://cdn.origene.com/chromatograms/mk6389_b06.zip

Restriction Sites:

Sgfl-Mlul

Cloning Scheme:


ACCN: NM_005787

ORF Size: 1314 bp

OTI Disclaimer: The molecular sequence of this clone aligns with the gene accession number as a point of reference only. However, individual transcript sequences of the same gene can differ through naturally occurring variations (e.g. polymorphisms), each with its own valid existence. This clone is substantially in agreement with the reference, but a complete review of all prevailing variants is recommended prior to use. [More info](#)

OTI Annotation: This clone was engineered to express the complete ORF with an expression tag. Expression varies depending on the nature of the gene.

Components: The ORF clone is ion-exchange column purified and shipped in a 2D barcoded Matrix tube containing 10ug of transfection-ready, dried plasmid DNA (reconstitute with 100 ul of water).

Reconstitution Method:

1. Centrifuge at 5,000xg for 5min.
2. Carefully open the tube and add 100ul of sterile water to dissolve the DNA.
3. Close the tube and incubate for 10 minutes at room temperature.
4. Briefly vortex the tube and then do a quick spin (less than 5000xg) to concentrate the liquid at the bottom.
5. Store the suspended plasmid at -20°C. The DNA is stable for at least one year from date of shipping when stored at -20°C.

RefSeq: [NM_005787.6](#)

RefSeq Size: 1550 bp

RefSeq ORF: 1317 bp

Locus ID: 10195

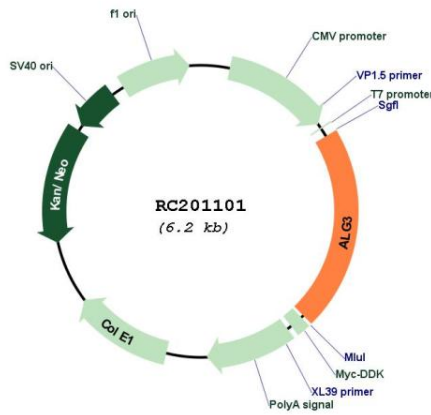
UniProt ID: [Q92685](#)

Cytogenetics: 3q27.1

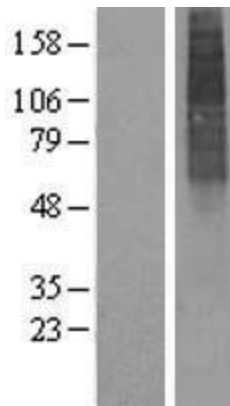
Domains: ALG3
Protein Families: Transmembrane
Protein Pathways: Metabolic pathways, N-Glycan biosynthesis
MW: 50.1 kDa

Gene Summary: This gene encodes a member of the ALG3 family. The encoded protein catalyses the addition of the first dol-P-Man derived mannose in an alpha 1,3 linkage to Man5GlcNAc2-PP-Dol. Defects in this gene have been associated with congenital disorder of glycosylation type Id (CDG-Id) characterized by abnormal N-glycosylation. Multiple transcript variants encoding different isoforms have been found for this gene. [provided by RefSeq, Nov 2008]

Product images:



Circular map for RC201101



Western blot validation of overexpression lysate (Cat# [LY417074]) using anti-DDK antibody (Cat# [TA50011-100]). Left: Cell lysates from untransfected HEK293T cells; Right: Cell lysates from HEK293T cells transfected with RC201101 using transfection reagent MegaTran 2.0 (Cat# [TT210002]).