

Product datasheet for **RC201100**

KIF20A (NM_005733) Human Tagged ORF Clone

Product data:

Product Type:	Expression Plasmids
Product Name:	KIF20A (NM_005733) Human Tagged ORF Clone
Tag:	Myc-DDK
Symbol:	KIF20A
Synonyms:	MKLP2; RAB6KIFL
Mammalian Cell Selection:	Neomycin
Vector:	pCMV6-Entry (PS100001)
E. coli Selection:	Kanamycin (25 ug/mL)



[View online »](#)

ORF Nucleotide Sequence:

>RC201100 representing NM_005733
 Red=Cloning site Blue=ORF Green=Tags(s)

TTTTGTAATACGACTCACTATAGGGCGGCCGGGAATTCGTCGACTGGATCCGGTACCGAGGAGATCTGCC
 GCC**GCGATCGCC**

ATGTCGAAGGGATCCTTTCTCCGCCAGCGGGCTTGCTGTCCGATGACGATGTCGTAGTTTCTCCCATGT
 TTGAGTCCACAGCTGCAGATTTGGGGTCTGTGGTACGCAAGAACCTGCTATCAGACTGCTGTGCTGCTC
 TACCTCCCTAGAGGACAAGCAGCAGGTTCCATCTGAGGACAGTATGGAGAAGGTGAAAGTATACTTGAGG
 GTTAGGCCCTTGTACCTTCAGAGTTGGAACGACAGGAAGATCAGGGTTGTGTCGTATTGAGAATGTGG
 AGACCCTTGTCTACAAGCACCAAGGACTCTTTTGCCCTGAAGAGCAATGAACGGGGAATTGGCCAAGC
 CACACACAGGTTACCTTTCCAGATCTTTGGGCCAGAAGTGGGACAGGCATCTTCTTCAACCTAACT
 GTGAAGGAGATGGTAAAGGATGACTCAAAGGGCAGAAGTGGCTCATCTATACATATGGAGTCACTAACT
 CAGGGAAAACCCACAGATTCAAGGTACCATCAAGGATGGAGGGATTCTCCCCGGTCCCTGGCGCTGAT
 CTTCAATAGCCTCCAAGGCCAATTCATCCAACACCTGATCTGAAGCCCTTGCTCTCCAATGAGGTAATC
 TGGCTAGACAGCAAGCAGATCCGACAGGAGGAAATGAAGAAGCTGTCCCTGCTAAATGGAGGCCTCCAAG
 AGGAGGAGCTGTCCACTTCTTGAAGAGGAGTGTCTACATCGAAAGTCGGATAGGTACCAGCACCAGCTT
 CGACAGTGGCATTGCTGGGCTCTTCTATCAGTCAGTGTACCAGCAGTACCCAGCTGGATGAAACAAGT
 CATCGATGGGCACAGCCAGACACTGCCCACTACCTGTCCCGCAAAACATTCGCTTCTCCATCTGGATCT
 CATTCTTTGAGATCTACAACGAAGTCTTTATGACCTATTAGAACCGCCTAGCCAACAGCGCAAGAGGCA
 GACTTTGGCGCTATGCGAGGATCAAAATGGCAATCCCTATGTGAAAGATCTCACTGGATTATGTGCAA
 GATGCTGAGGAGGCTGGAAGCTCCTAAAAGTGGTTCGTAAGAACCAGAGCTTTGCCAGCACCCACCTCA
 ACCAGAACTCCAGCCGACGTCACAGCATCTTCTCAATCAGGATCCTACACCTTCAGGGGGAAGGAGAT
 AGTCCCCAAGATCAGCGAGCTGTCACTCTGTGATCTGGCTGGCTCAGAGCGCTGCAAAAGATCAGAAGAGT
 GGTGAACGGTTGAAGGAAGCAGGAAACATTAACACCTCTCTACACACCCTGGGCCGCTGTATTGCTGCC
 TTCGTCAAAACCAGCAGAACCGGTCAAAGCAGAACCTGGTTCCCTTCCGTGACAGCAAGTTGACTCGAGT
 GTTCCAAGGTTTCTTACAGGCCGAGGCCGTTCTGCATGATTGTCAATGTGAATCCCTGTGCATCTACC
 TATGATGAAACTTTCATGTGGCCAAGTCTCAGCCATTGCTAGCCAGCTTGTGCATGCCCCACCTATGC
 AACTGGGATCCCATCCCTGCACCTGTTCAAGGAACATAGTCTTCAGGTATCCCCCAGCTTAGAGAA
 AGGGGCTAAGGCAGACACAGGCTTGTATGATGATATTGAAAATGAAGCTGACATCTCCATGTATGGCAA
 GAGGAGCTCCTACAAGTTGTGGAAGCCATGAAGACACTGCTTTTGAAGGAACGACAGGAAAAGCTACAGC
 TGGAGATGCATCTCCGAGATGAAATTTGCAATGAGATGGTAGAACAGATGCAACAGCGGGAACAGTGGTG
 CAGTGAACATTTGGACACCCAAAAGGAACTATTGGAGGAAATGTATGAAGAAAACTAAATATCCTCAAG
 GAGTCACTGACAAGTTTTTACCAAGAAGAGATTCAAGGAGCGGGATGAAAAGATTGAAGAGCTAGAAGCTC
 TCTTGCAGGAAGCCAGACAACAGTCAGTGGCCCATCAGCAATCAGGGTCTGAATTGGCCCTACGGCGGTC
 ACAAAGGTTGGCAGCTTCTGCCTCCACCAGCAGCTTCAGGAGGTTAAAGCTAAATTACAGCAGTGCAAA
 GCAGAGCTAAACTCTACCACTGAAGAGTTGCATAAGTATCAGAAAATGTTAGAACCACCACCTCAGCCA
 AGCCCTTACCATTGATGTGGACAAGAAGTTAGAAGAGGGCCAGAAGAATATAAGGCTGTTGCGGACAGA
 GCTTCAGAAACTTGGTGAGTCTCTCAATCAGCAGAGAGAGCTTGTGGCACAGCACTGGGGCAGGAA
 CTTCTGTAAGCCTTGACCACTTGTGATGACATTTAATCAAACAGGACCAGACTCTGGCTGAACTGCAGA
 ACAACATGGTGCTAGTGAAGTGGACCTTCGGAAGAAGGACGATGTATTGCTGAGCAGTATCATCTGT
 GTTGAAGTCCAAGGCCAGGTTTCTGCCAAAAGCGCCTTGGTACCAACCAGGAAAATCAGCAACCAAAAC
 CAACAACCACCAGGGAAGAAACCATCTTTCGAAATTTACTTCCCCGAACCAACCTGCCAAAAGCTCAA
 CAGACTGCAGCCCTATGCCGGATCCTACGCTCACGGCGTTCCTTTACTCAAATCTGGGCCTTTTGG
 CAAAAAGTAC

ACGCGTACGCGGCCGCTCGAGCAGAAACTCATCTCAGAAGAGGATCTGGCAGCAATGATATCCTGGATT
 ACAAGGATGACGACGATAAGGTTTAA

Protein Sequence: >RC201100 representing NM_005733
 Red=Cloning site Green=Tags(s)

```

MSQGILSPPAGLLSDDVVVSPMFESTAADLGSVVRKNLLSDCSVVSTSLEDKQQVPSSEDSMEKVKVYLR
VRPLLPSELERQEDQGCVRIVENVELVLQAPKDSFALKSNERGIGQATHRFTFSQIFGPEVGOASFFNLT
VKEMVKDVLKGGQNLIIYTYGVTNSGKTHTIQGTIKDGGILPRSLALIFNSLQGLHPTDLKPLLSNEVI
WLDKQIRQEEMKLLSLLNGGLQEEELSTSLKRSVYIESRIGTSTSFDSGIAGLSSISQCTSSSQLDETS
HRWAQPDAPLPVPANIRFSIWISFFFEIYNELLYDLLEPPSQQRKQTLRLCEDQNGNPYVKDLNWIHVQ
DAEEAWKLLKVGKRNQSFASHTLNQNSSRSHSIFIRILHLQEGEIVPKISELSLCLAGSERCKDQKS
GERLKEAGNINTSLHTLGRICIAALRQNRQNRKQNLVPRFRDVKLTRVFQGFTRGRSCMIVNVNPNCAST
YDETLHVAKFSAIASQLVHAPPMQLGFPSSLHSFIKEHSLQVSPSLEKGAADTGLDDDIENEADISMYGK
EELLQVVEAMKTLKLLKERQEKLEMLHRDEICNEMVEQMQRQEQWCSEHLDTQKELLEEMYEKLNILK
ESLTSFYQEEIQERDEKIEELEALLQEARQQSVAHQQSGSELALRRSQRLAASASTQQLQEVKAKLQCK
AELNSTTEELHKYQKMLEPPPSAKPFTIDVDKLEEGQKNIRLLRTELQKLGESLQSAERACCHSTGAGK
LRQALTTCDLILIKQDQTLAELQNNMVLVKLDLRKKAACIAEQYHTVLKLGQVSAKKRLGTNQENQQP
QQPPGKKPFLRNLLPRTPTCQSSTDCSPYARILRSRRSPLLKSGPFGKKY
  
```

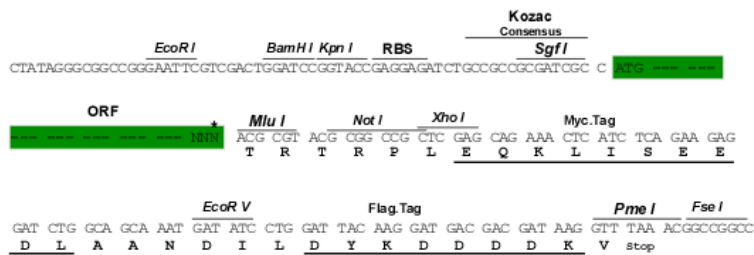
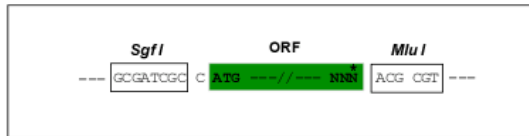
TRTRPLEQKLISEEDLAANDILDYKDDDDKV

Chromatograms: https://cdn.origene.com/chromatograms/mg2637_c05.zip

Restriction Sites: SgfI-MluI

Cloning Scheme:

Cloning sites used for ORF Shuttling:

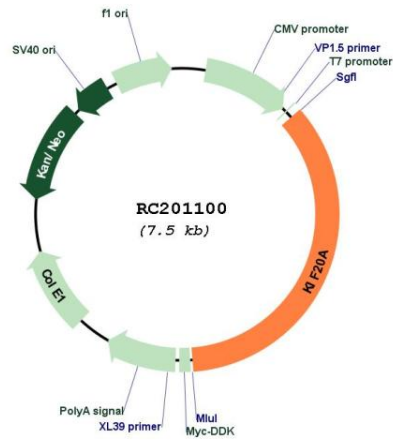


* The last codon before the Stop codon of the ORF

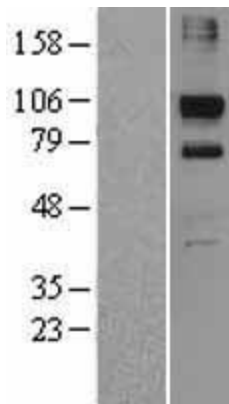
ACCN: NM_005733

ORF Size:	2670 bp
OTI Disclaimer:	The molecular sequence of this clone aligns with the gene accession number as a point of reference only. However, individual transcript sequences of the same gene can differ through naturally occurring variations (e.g. polymorphisms), each with its own valid existence. This clone is substantially in agreement with the reference, but a complete review of all prevailing variants is recommended prior to use. More info
OTI Annotation:	This clone was engineered to express the complete ORF with an expression tag. Expression varies depending on the nature of the gene.
Components:	The ORF clone is ion-exchange column purified and shipped in a 2D barcoded Matrix tube containing 10ug of transfection-ready, dried plasmid DNA (reconstitute with 100 ul of water).
Reconstitution Method:	<ol style="list-style-type: none">1. Centrifuge at 5,000xg for 5min.2. Carefully open the tube and add 100ul of sterile water to dissolve the DNA.3. Close the tube and incubate for 10 minutes at room temperature.4. Briefly vortex the tube and then do a quick spin (less than 5000xg) to concentrate the liquid at the bottom.5. Store the suspended plasmid at -20°C. The DNA is stable for at least one year from date of shipping when stored at -20°C.
RefSeq:	NM_005733.3
RefSeq Size:	2972 bp
RefSeq ORF:	2673 bp
Locus ID:	10112
UniProt ID:	O95235
Cytogenetics:	5q31.2
Domains:	kinesin
Protein Families:	Druggable Genome
MW:	100.1 kDa
Gene Summary:	Mitotic kinesin required for chromosome passenger complex (CPC)-mediated cytokinesis. Following phosphorylation by PLK1, involved in recruitment of PLK1 to the central spindle. Interacts with guanosine triphosphate (GTP)-bound forms of RAB6A and RAB6B. May act as a motor required for the retrograde RAB6 regulated transport of Golgi membranes and associated vesicles along microtubules. Has a microtubule plus end-directed motility. [UniProtKB/Swiss-Prot Function]

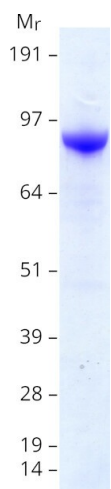
Product images:



Circular map for RC201100



Western blot validation of overexpression lysate (Cat# [LY401748]) using anti-DDK antibody (Cat# [TA50011-100]). Left: Cell lysates from untransfected HEK293T cells; Right: Cell lysates from HEK293T cells transfected with RC201100 using transfection reagent MegaTran 2.0 (Cat# [TT210002]).



Coomassie blue staining of purified KIF20A protein (Cat# [TP301100]). The protein was produced from HEK293T cells transfected with KIF20A cDNA clone (Cat# RC201100) using MegaTran 2.0 (Cat# [TT210002]).