

Product datasheet for RC201092

SERBP1 (NM_001018067) Human Tagged ORF Clone

Product data:

Product Type:	Expression Plasmids
Product Name:	SERBP1 (NM_001018067) Human Tagged ORF Clone
Tag:	Myc-DDK
Symbol:	SERBP1
Synonyms:	CGI-55; CHD3IP; HABP4L; PAI-RBP1; PAIRBP1
Mammalian Cell Selection:	Neomycin
Vector:	pCMV6-Entry (PS100001)
E. coli Selection:	Kanamycin (25 ug/mL)
ORF Nucleotide Sequence:	>RC201092 representing NM_001018067 Red=Cloning site Blue=ORF Green=Tags(s)

TTTTGTAATACGACTCACTATAGGGCGGCCGGAATTCGTCGACTGGATCCGGTACCGAGGAGATCTGCC
GCC**CGATCGCC**

ATGCTGGGCACTTACAGGAAGGCTTCGGCTGCGTGGTACCAACCGATTGACAGTTATTTGACGACG
AATCGGACCCCTTCGAGGTGCTGAAGGCAGCAGAGAACAAGAAAAAGAAGCCGGCGGGGGCGGCTTGG
GGGCCCTGGGGCCAAGAGCGCAGCTCAGGCCGGCCAGACCACTCCAACGGCGCAGGCAAACAGCTG
CGCAAGGAGTCCCAGAAAGACCCGAAGAACCCTGCCCCCAGCGTTGGCGTGGTTGACAAGAAAGAGG
AGACGCAGCCGCCGTGGCGCTTAAGAAAGAAGGAATAAGACGAGTTGGAAGAAGACCTGATCAACAACT
TCAGGGTGAAGGAAAATAATTGATAGAAGACCAGAAAGGCGACCACCTCGTGAACGAAGATTGCAAAAAG
CCACTTGAAGAAAAGGTGAAGGAGGCGAATTTTCAGTTGATAGACCGATTATTGACCGACCTATTGCGAG
GTCGTGGTGGTCTTGAAGAGGTGAGGGGGCCGTGGACGTGGAATGGGCCGAGGAGATGGATTTGATTC
TCGTGGCAAACGTGAATTTGATAGGCATAGTGAAGTGATAGATCTTCTTTTTCACATTACAGTGGCCTG
AAGCAGGAGGACAAACGTGGAGGTAGCGGATCTCACACTGGGAACTGTCAAAGACGAATTAACAGAGT
CCCCAAATACATTCAGAAACAAATATCTTATAATTACAGTGACTTGGATCAATCAAATGTGACTGAGGA
AACACCTGAAGGTGAAGAATCATCCAGTGGCAGACACTGAAAAAAGGAGAATGAAGTTGAAGAGGTA
AAAGAGGAGGGTCCAAAAGAGATGACTTTGGATGAGTGAAGGCTATTCAAAATAAGACCGGGCAAAAAG
TAGAATTTAATATCCGAAAACCAATGAAGGTGCTGATGGCAGTGGAAGAAGGGATTTGTTCTTCATAA
ATCAAAGAGTGAAGAGGCTCATGCTGAAGATTCGGTTATGGACCATCTTTCCGGAAGCCAGCAAATGAT
ATAACGTCTCAGCTGGAGATCAATTTTGGAGACCTTGGCCGCCAGGACGTGGCGCAGGGGAGGACGAG
GTGGACGTGGGCGTGGTGGGCGCCAAACCGTGGCAGCAGGACCGACAAGTCAAGTGCTTCTGCTCTGA
TGTGGATGACCCAGAGGCATTCCAGCTCTGGCT

ACGCGTACGCGGCCGCTCGAGCAGAACTCATCTCAGAAGAGGATCTGGCAGCAAATGATATCCTGGATT
ACAAGGATGACGACGATAAAGGTTTAA



Protein Sequence: >RC201092 representing NM_001018067
Red=Cloning site Green=Tags(s)

MPGHLQEGFGCVVTNRFDQLFDDSDPFEVLKAAENKKKEAGGGVGGPGAKSAAQAAAQTNSNAAGKQL
 RKESQKDRKNLPPSVGVVVKKEETQPPVALKKEGIRRVGRRPDQLQEGEKIIDRRPERRPPRRERFEK
 PLEEKEGEGEFSVDRPIIDRPIRGRGGLGRGRGGRGRMGGRDGFDSRGKREFDRHSGSDRSSFSHYSGL
 KHEDKRGSGSHNWGTVKDEL TESPKYIQKQISYNYSDLQSNVTEETPEGEEHHPVADTENKENEVEEV
 KEEGPKEMTLDEWKAIQNKDRAKVEFNIRKPNEGADGQWKKGFVLHKSKSEEHAEDSVMDDHHFRKPAND
 ITSQLEINFGDLGRPGRGGRGGRGGRGGRPNRGRSRTDKSSASAPDVEDDPEAFPALA

TRTRPLEQKLISEEDLAANDILDYKDDDDKV

Chromatograms: https://cdn.origene.com/chromatograms/mg3781_g01.zip

Restriction Sites: SgfI-MluI

Cloning Scheme:



ACCN: NM_001018067

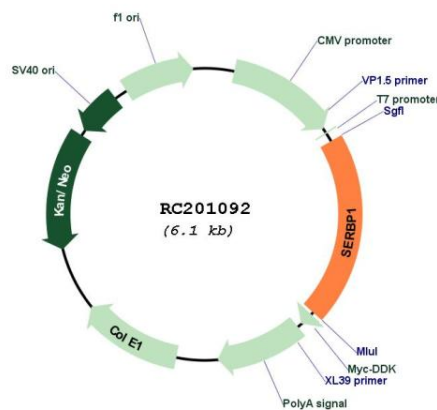
ORF Size: 1224 bp

OTI Disclaimer: Due to the inherent nature of this plasmid, standard methods to replicate additional amounts of DNA in E. coli are highly likely to result in mutations and/or rearrangements. Therefore, OriGene does not guarantee the capability to replicate this plasmid DNA. Additional amounts of DNA can be purchased from OriGene with batch-specific, full-sequence verification at a reduced cost. Please contact our customer care team at custsupport@origene.com or by calling 301.340.3188 option 3 for pricing and delivery.

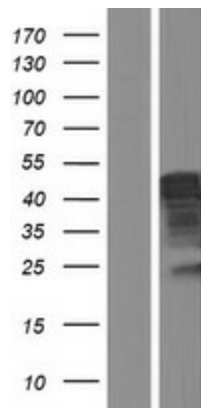
The molecular sequence of this clone aligns with the gene accession number as a point of reference only. However, individual transcript sequences of the same gene can differ through naturally occurring variations (e.g. polymorphisms), each with its own valid existence. This clone is substantially in agreement with the reference, but a complete review of all prevailing variants is recommended prior to use. [More info](#)

OTI Annotation:	This clone was engineered to express the complete ORF with an expression tag. Expression varies depending on the nature of the gene.
Components:	The ORF clone is ion-exchange column purified and shipped in a 2D barcoded Matrix tube containing 10ug of transfection-ready, dried plasmid DNA (reconstitute with 100 ul of water).
Reconstitution Method:	<ol style="list-style-type: none">1. Centrifuge at 5,000xg for 5min.2. Carefully open the tube and add 100ul of sterile water to dissolve the DNA.3. Close the tube and incubate for 10 minutes at room temperature.4. Briefly vortex the tube and then do a quick spin (less than 5000xg) to concentrate the liquid at the bottom.5. Store the suspended plasmid at -20°C. The DNA is stable for at least one year from date of shipping when stored at -20°C.
RefSeq:	NM_001018067.2
RefSeq Size:	6764 bp
RefSeq ORF:	1227 bp
Locus ID:	26135
UniProt ID:	Q8NC51
Cytogenetics:	1p31.3
MW:	44.8 kDa
Gene Summary:	May play a role in the regulation of mRNA stability. Binds to the 3'-most 134 nt of the SERPINE1/PAI1 mRNA, a region which confers cyclic nucleotide regulation of message decay. Seems to play a role in PML-nuclear bodies formation (PubMed:28695742).[UniProtKB/Swiss-Prot Function]

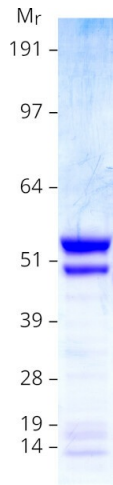
Product images:



Circular map for RC201092



Western blot validation of overexpression lysate (Cat# [LY422718]) using anti-DDK antibody (Cat# [TA50011-100]). Left: Cell lysates from untransfected HEK293T cells; Right: Cell lysates from HEK293T cells transfected with RC201092 using transfection reagent MegaTran 2.0 (Cat# [TT210002]).



Coomassie blue staining of purified SERBP1 protein (Cat# [TP301092]). The protein was produced from HEK293T cells transfected with SERBP1 cDNA clone (Cat# RC201092) using MegaTran 2.0 (Cat# [TT210002]).