

## Product datasheet for **RC201083**

### **TOMM34 (NM\_006809) Human Tagged ORF Clone**

#### Product data:

**Product Type:** Expression Plasmids  
**Product Name:** TOMM34 (NM\_006809) Human Tagged ORF Clone  
**Tag:** Myc-DDK  
**Symbol:** TOMM34  
**Synonyms:** HTOM34P; TOM34; URCC3  
**Mammalian Cell Selection:** Neomycin  
**Vector:** pCMV6-Entry (PS100001)  
**E. coli Selection:** Kanamycin (25 ug/mL)  
**ORF Nucleotide Sequence:** >RC201083 ORF sequence  
**Red=Cloning site Blue=ORF Green=Tags(s)**

TTTTGTAATACGACTCACTATAGGGCGGCCGGAATTCGTCGACTGGATCCGGTACCGAGGAGATCTGCC  
GCC**CGGATCGCC**

ATGGCCCCAAATCCCAGACTCTGTGGAGGAGCTCCGCGCCGCCGCAATGAGAGTTTCCGCAACGGCC  
AGTACGCCGAGGCCTCCGCGCTCTACGGCCGCGCCTGCGGGTGTCTGCAGGCGCAAGTTCTTCAGACCC  
AGAAGAAGAAAGTGTCTACTCCAACCGAGCAGCATGCACTTGAAGGATGAAACTGCAGAGACTGC  
ATCAAAGATTGCACTTCAGCACTGGCCTTGGTTCCTTCAGCATTAAAGCCCTGCTGCGGCGAGCATCTG  
CTTATGAGGCTCTGGAGAAGTACCCTATGGCCTATGTTGACTATAAGACTGTGCTGCAGATTGATGATAA  
TGTGACGTCAGCCGTAGAAGGCATCAACAGAATGACCAGAGCTCTCATGGACTCGCTTGGCCTGAGTGG  
CGCCTGAAGTGCCTCAATCCCCTTGGTGCCTGTTTCAGCTCAGAAGAGGTGGAATTCCTTGCCTTCGG  
AGAACCACAAAGAGATGGCTAAAAGCAAAATCCAAGAAACCACAGCTACAAAGAACAGAGTGCCTTCTGC  
TGGGGATGTGGAGAAAGCCAGAGTTCTGAAGGAAGAAGGCAATGAGCTTGTAAAGAAGGGAAACCATAAG  
AAAGCTATTGAGAAGTACAGTGAAGCCTCTTGTGTAGTAACCTGGAATCTGCCACGTACAGCAACAGAG  
CACTCTGCTATTTGGTCTGAAGCAGTACACAGAAGCAGTGAAGGACTGCACAGAAGCCCTCAAGCTGGA  
TGGAAAGAACGTGAAGGCATTCTACAGACGGGCTCAAGCCACAAAGCACTCAAGGACTATAAATCCAGC  
TTTGCAGACATCAGCAACCTCCTACAGATTGAGCCTAGGAATGGTCTGCACAGAAGTTGCGGCAGGAAG  
TGAAGCAGAACCTACAC

**ACGCGT**ACGCGGCCGCTCGAGCAGAAACTCATCTCAGAAGAGGATCTGGCAGCAAATGATATCCTGGATT  
ACAAGGATGACGACGATAAGGTTTAA



[View online »](#)



**Reconstitution Method:**

1. Centrifuge at 5,000xg for 5min.
2. Carefully open the tube and add 100ul of sterile water to dissolve the DNA.
3. Close the tube and incubate for 10 minutes at room temperature.
4. Briefly vortex the tube and then do a quick spin (less than 5000xg) to concentrate the liquid at the bottom.
5. Store the suspended plasmid at -20°C. The DNA is stable for at least one year from date of shipping when stored at -20°C.

**RefSeq:** [NM\\_006809.5](#)

**RefSeq Size:** 2066 bp

**RefSeq ORF:** 930 bp

**Locus ID:** 10953

**UniProt ID:** [Q15785](#)

**Cytogenetics:** 20q13.12

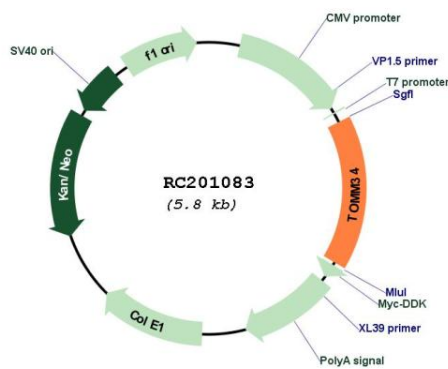
**Domains:** TPR

**Protein Families:** Druggable Genome

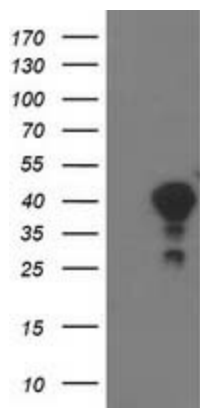
**MW:** 34.6 kDa

**Gene Summary:** The protein encoded by this gene is involved in the import of precursor proteins into mitochondria. The encoded protein has a chaperone-like activity, binding the mature portion of unfolded proteins and aiding their import into mitochondria. This protein, which is found in the cytoplasm and sometimes associated with the outer mitochondrial membrane, has a weak ATPase activity and contains 6 TPR repeats. [provided by RefSeq, Jul 2008]

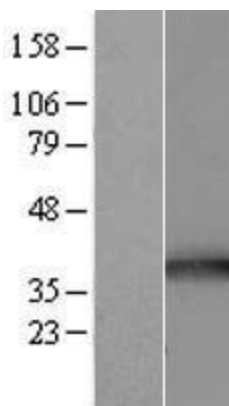
**Product images:**



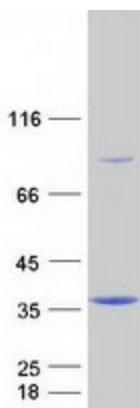
Circular map for RC201083



HEK293T cells were transfected with the pCMV6-ENTRY control (Cat# [PS100001], Left lane) or pCMV6-ENTRY TOMM34 (Cat# RC201083, Right lane) cDNA for 48 hrs and lysed. Equivalent amounts of cell lysates (5 ug per lane) were separated by SDS-PAGE and immunoblotted with anti-TOMM34(Cat# [TA503090]). Positive lysates [LY416405] (100ug) and [LC416405] (20ug) can be purchased separately from OriGene.



Western blot validation of overexpression lysate (Cat# [LY416405]) using anti-DDK antibody (Cat# [TA50011-100]). Left: Cell lysates from untransfected HEK293T cells; Right: Cell lysates from HEK293T cells transfected with RC201083 using transfection reagent MegaTran 2.0 (Cat# [TT210002]).



Coomassie blue staining of purified TOMM34 protein (Cat# [TP301083]). The protein was produced from HEK293T cells transfected with TOMM34 cDNA clone (Cat# RC201083) using MegaTran 2.0 (Cat# [TT210002]).