

Product datasheet for **RC201068**

MYLC2PL (MYL10) (NM_138403) Human Tagged ORF Clone

Product data:

Product Type:	Expression Plasmids
Product Name:	MYLC2PL (MYL10) (NM_138403) Human Tagged ORF Clone
Tag:	Myc-DDK
Symbol:	MYLC2PL
Synonyms:	MYLC2PL; PLRLC
Mammalian Cell Selection:	Neomycin
Vector:	pCMV6-Entry (PS100001)
E. coli Selection:	Kanamycin (25 ug/mL)
ORF Nucleotide Sequence:	>RC201068 ORF sequence Red=Cloning site Blue=ORF Green=Tags(s)

TTTTGTAATACGACTCACTATAGGGCGGCCGGAATTCGTCGACTGGATCCGGTACCGAGGAGATCTGCC
GCC**CGATCGCC**

ATGTTGCTTAGGCTGGTCTCAAACCTCTGGCCTCAAGTGATCCTCCCTCCTCGGCCTCCCAAAGTGCTGG
GATTACAGGCACCGAGAAGAGCTCGAAAAGAGCAGAAGGCACCGCCAGCTCCAACGTCTTCTCCATGTT
TGATCAGTCCCAGATCCAGGAGTTAAAGAGAGTCTGGCTCTGTCGCCAGGCTGGAGCGCAATGGCATG
ATCTCGGCTCACTGCAACCTCTGCCTCACGGTTCAAGCAATTCTCTGCCTCAGCCTCCCAAGCTTCA
CCATCATGGACCAGAACCGTGATGGCTTCATCGACAAAGAGGACTTGAGGGACACCTTTGCCGCGTGGG
CCGCATCAATGTCAAGAACGAGGAAGTGGAGGCCATGGTGAAGGAGGCCCGGACCCATCAACTTCAGG
GTGTTCTGACCATGTTTGGGGAGAAGCTGAAGGGCACGACCCAGAGGAGACCATTCTCCACGCCTTCA
AAGTGTTCGACACTGAAGGGAAAGGTTTCGTCAAGGCCGATGTCATCAAAGAAAACTTATGACCCAGGC
AGACCGCTTCAGTGAGGAGGAGTCAAGCAGATGTTTGCAGCGTTTCCCCAGATGTGTGCCGCAACCTG
GACTACAGAAACCTGTGCTACGTCATCACTCACGGTGAAGAGAAGGAT

ACGCGTACGCGGCCGCTCGAGCAGAAACTCATCTCAGAAGAGGATCTGGCAGCAAATGATATCCTGGATT
ACAAGGATGACGACGATAAGGTTTAA



[View online »](#)

Protein Sequence: >RC201068 protein sequence
Red=Cloning site Green=Tags(s)

MLLRLVSNWPQVILPPRPPKVLGLQAPRRARKRAEGTASSNVFSMFDQSQIQEFKESLALSPRLERNGM
 ISAHCNLCLTGSSNSPASASQAF TIMDQNRDGF IDKEDLRDTFAALGRINVKNEELEAMVKEAPGPINFT
 VFLTMFGEKLGTDPEETILHAFKVFDTGKGFVKADVIKEKLMTQADRFSEEEVKQMF AAFPDPVCGNL
 DYRNLCYVITHGEEKD

TRTRPLEQKLISEEDLAANDILDYKDDDDKV

Chromatograms: https://cdn.origene.com/chromatograms/mk6721_h03.zip

Restriction Sites: SgfI-MluI

Cloning Scheme:



ACCN: NM_138403

ORF Size: 678 bp

OTI Disclaimer: The molecular sequence of this clone aligns with the gene accession number as a point of reference only. However, individual transcript sequences of the same gene can differ through naturally occurring variations (e.g. polymorphisms), each with its own valid existence. This clone is substantially in agreement with the reference, but a complete review of all prevailing variants is recommended prior to use. [More info](#)

OTI Annotation: This clone was engineered to express the complete ORF with an expression tag. Expression varies depending on the nature of the gene.

Components: The ORF clone is ion-exchange column purified and shipped in a 2D barcoded Matrix tube containing 10ug of transfection-ready, dried plasmid DNA (reconstitute with 100 ul of water).

Reconstitution Method:

1. Centrifuge at 5,000xg for 5min.
2. Carefully open the tube and add 100ul of sterile water to dissolve the DNA.
3. Close the tube and incubate for 10 minutes at room temperature.
4. Briefly vortex the tube and then do a quick spin (less than 5000xg) to concentrate the liquid at the bottom.
5. Store the suspended plasmid at -20°C. The DNA is stable for at least one year from date of shipping when stored at -20°C.

RefSeq: [NM_138403.3](#), [NP_612412.2](#)

RefSeq Size: 1043 bp

RefSeq ORF: 681 bp

Locus ID: 93408

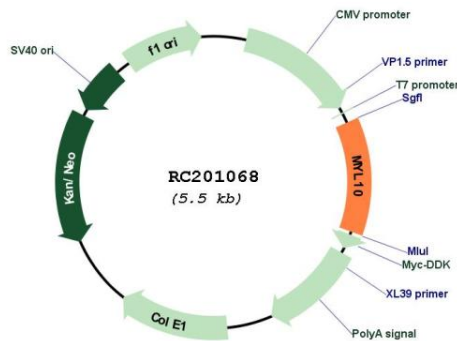
UniProt ID: [Q9BUA6](#)

Cytogenetics: 7q22.1

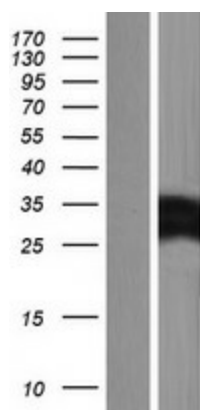
Protein Pathways: Focal adhesion, Leukocyte transendothelial migration, Regulation of actin cytoskeleton, Tight junction

MW: 25.3 kDa

Product images:



Circular map for RC201068



Western blot validation of overexpression lysate (Cat# [LY408665]) using anti-DDK antibody (Cat# [TA50011-100]). Left: Cell lysates from untransfected HEK293T cells; Right: Cell lysates from HEK293T cells transfected with RC201068 using transfection reagent MegaTran 2.0 (Cat# [TT210002]).