

Product datasheet for RC201061

CMTM6 (NM_017801) Human Tagged ORF Clone

Product data:

Product Type: Expression Plasmids
Product Name: CMTM6 (NM_017801) Human Tagged ORF Clone
Tag: Myc-DDK
Symbol: CMTM6
Synonyms: CKLFSF6; PRO2219
Mammalian Cell Selection: Neomycin
Vector: pCMV6-Entry (PS100001)
E. coli Selection: Kanamycin (25 ug/mL)
ORF Nucleotide Sequence: >RC201061 ORF sequence
Red=Cloning site Blue=ORF Green=Tags(s)

TTTTGTAATACGACTCACTATAGGGCGCCGGGAATTCGTCGACTGGATCCGGTACCGAGGAGATCTGCC
GCC**CGATCGCC**

ATGGAGAACGGAGCGGTGTACAGCCCCACTACGGAGGAGGACCCGGGCCCCGCCAGAGGCCCCCGGAGCG
GCCTCGCTGCCTACTTTTTTCATGGGCCGGCTCCCATTGCTCCGGCGCTTCTCAAGGGCTTGCACTGTT
GCTGTCTCTGCTGGCCTTCATCTGTGAAGAAGTTGTATCACAATGTACTTTATGTGGAGGACTTTATTTT
TTTGAGTTTGAAGCTGCAGTGCCTTTCTCTGAGTCTCCTTATACTGATTGTGTATTGCACTCCATTTT
ATGAGAGAGTTGATACCACAAAAGTAAAATCATCGGATTTTTATATTACTTTGGGAACAGGATGTGTGTT
TTTGTTGGCATCCATCATTTTTGTTCCACACATGACAGGACTTCAGCTGAGATTGCTGCAATTGTGTTT
GGATTTATAGCAAGTTTTATGTTCTACTTGACTTTATCACTATGCTGTATGAAAAACGACAGGAGTCCC
AGCTGAGAAAACCTGAAAATACCACTAGGGCTGAAGCCCTCACTGAGCCACTTAATGCC

ACGCGTACGCGGCCGCTCGAGCAGAAACTCATCTCAGAAGAGGATCTGGCAGCAAATGATATCCTGGATT
ACAAGGATGACGACGATAAGGTTTAA

Protein Sequence: >RC201061 protein sequence
Red=Cloning site Green=Tags(s)

MENGAVYSPTTEEDPGPARGPRSGLAAYFFMGRPLLRRLVKGLQLLLSLLAFICEEVVSQCTLCGGLYF
FEFVSCSAFLLSLLILIVYCTPFYERVDTTKVSSDFYITLGTGCVFLLASIIFVSTHDRTSAEIAAIVF
GFIASFMFLDFITMLYEKRQESQLRPENTTRAALTEPLNA

TRTRPLEQKLISEEDLAANDILDYKDDDDKV

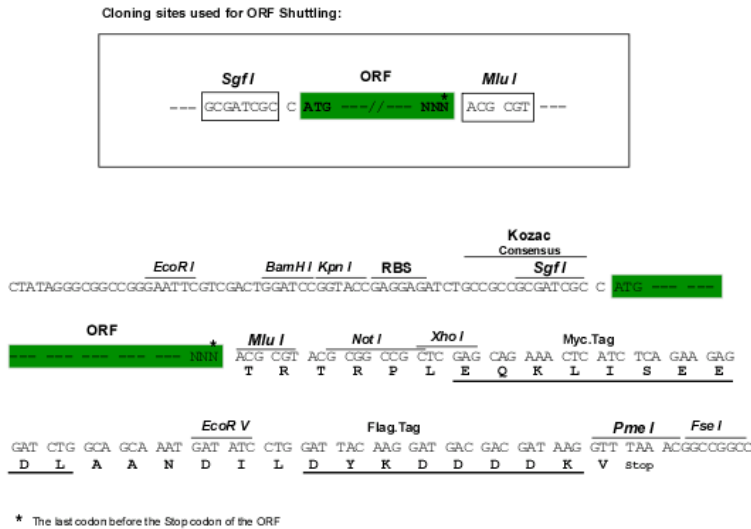
Chromatograms: https://cdn.origene.com/chromatograms/mk6389_h10.zip



[View online »](#)

Restriction Sites: SgfI-MluI

Cloning Scheme:



ACCN: NM_017801

ORF Size: 549 bp

OTI Disclaimer: The molecular sequence of this clone aligns with the gene accession number as a point of reference only. However, individual transcript sequences of the same gene can differ through naturally occurring variations (e.g. polymorphisms), each with its own valid existence. This clone is substantially in agreement with the reference, but a complete review of all prevailing variants is recommended prior to use. [More info](#)

OTI Annotation: This clone was engineered to express the complete ORF with an expression tag. Expression varies depending on the nature of the gene.

Components: The ORF clone is ion-exchange column purified and shipped in a 2D barcoded Matrix tube containing 10ug of transfection-ready, dried plasmid DNA (reconstitute with 100 ul of water).

Reconstitution Method:

1. Centrifuge at 5,000xg for 5min.
2. Carefully open the tube and add 100ul of sterile water to dissolve the DNA.
3. Close the tube and incubate for 10 minutes at room temperature.
4. Briefly vortex the tube and then do a quick spin (less than 5000xg) to concentrate the liquid at the bottom.
5. Store the suspended plasmid at -20°C. The DNA is stable for at least one year from date of shipping when stored at -20°C.

RefSeq: [NM_017801.3](#)

RefSeq Size: 3384 bp

RefSeq ORF: 552 bp

Locus ID: 54918

UniProt ID: [Q9NX76](#)

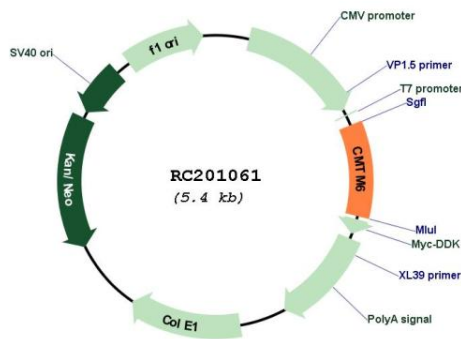
Cytogenetics: 3p22.3

Protein Families: Transmembrane

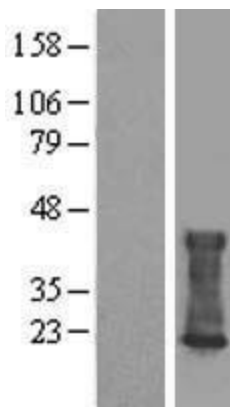
MW: 20.4 kDa

Gene Summary: This gene belongs to the chemokine-like factor gene superfamily, a novel family that is similar to the chemokine and transmembrane 4 superfamilies. This gene is one of several chemokine-like factor genes located in a cluster on chromosome 3. This gene is widely expressed in many tissues, but the exact function of the encoded protein is unknown. [provided by RefSeq, Jul 2008]

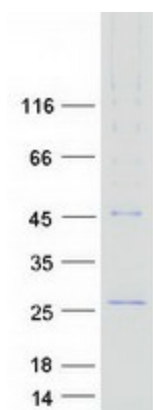
Product images:



Circular map for RC201061



Western blot validation of overexpression lysate (Cat# [LY413539]) using anti-DDK antibody (Cat# [TA50011-100]). Left: Cell lysates from untransfected HEK293T cells; Right: Cell lysates from HEK293T cells transfected with RC201061 using transfection reagent MegaTran 2.0 (Cat# [TT210002]).



Coomassie blue staining of purified CMTM6 protein (Cat# [TP301061]). The protein was produced from HEK293T cells transfected with CMTM6 cDNA clone (Cat# RC201061) using MegaTran 2.0 (Cat# [TT210002]).