

Product datasheet for **RC201051**

COMMD5 (NM_001081004) Human Tagged ORF Clone

Product data:

Product Type:	Expression Plasmids
Product Name:	COMMD5 (NM_001081004) Human Tagged ORF Clone
Tag:	Myc-DDK
Symbol:	COMMD5
Synonyms:	HCARG; HT002
Mammalian Cell Selection:	Neomycin
Vector:	pCMV6-Entry (PS100001)
E. coli Selection:	Kanamycin (25 ug/mL)
ORF Nucleotide Sequence:	>RC201051 ORF sequence Red=Cloning site Blue=ORF Green=Tags(s)

TTTTGTAATACGACTCACTATAGGGCGGCCGGAATTCGTCGACTGGATCCGGTACCGAGGAGATCTGCC
GCC**CGATCGCC**

ATGTCTGCTGTGGGGGCTGCAACTCCATACCTGCATCATCCTGGTGATAGTCACAGTGGCCGAGTGAGTT
TCTTGGGGGCCAGCTTCTCCAGAGGTGGCAGCAATGGCCCGGCTACTAGGGGACCTAGACAGGAGCAC
GTTCAGAAAGTTGCTGAAGTTTGTGGTCAGCAGCCTGCAGGGGAGGACTGCCGAGAGGCTGTGCAGCGT
CTTGGGGTCAGCGCAACCTGCCGGAGGAGCAGCTGGGTGCCCTGCTGGCAGGCATGCACACACTGCTCC
AGCAGGCCCTCCGTCTGCCCCACCAGCCTGAAGCCTGACACCTTCAGGGACCAGCTCCAGGAGCTCTG
CATCCCCAAGACCTGGTCGGGGACTTGCCAGCGTGGTATTTGGGAGCCAGCGGCCCTCTTGATTCT
GTGGCCAGCAGCAGGGGCTGGCTGCCGCATGTTGCTGACTTTCGGTGGCGGGTGGATGTAGCAATCT
CCACCAGTGCCCTGGCTCGCTCCCTGCAGCCGAGCGTCTGATGCAGCTGAAGCTTTCAGATGGGTGAGC
ATACCGCTTTGAGGTCCCACAGCCAAGTTCCAGGAGCTGCGGTACAGCGTGGCCCTGGTCTAAAGGAG
ATGGCAGATCTGGAGAAGAGGTGTGAGCGCAGACTGCAGGAC

ACGCGTACGCGGGCCGCTCGAGCAGAACTCATCTCAGAAGAGGATCTGGCAGCAAATGATATCCTGGATT
ACAAGGATGACGACGATAAGGTTTAA



[View online »](#)

Reconstitution Method:

1. Centrifuge at 5,000xg for 5min.
2. Carefully open the tube and add 100ul of sterile water to dissolve the DNA.
3. Close the tube and incubate for 10 minutes at room temperature.
4. Briefly vortex the tube and then do a quick spin (less than 5000xg) to concentrate the liquid at the bottom.
5. Store the suspended plasmid at -20°C. The DNA is stable for at least one year from date of shipping when stored at -20°C.

RefSeq: [NM_001081004.3](#)

RefSeq Size: 1321 bp

RefSeq ORF: 675 bp

Locus ID: 28991

UniProt ID: [Q9GZQ3](#)

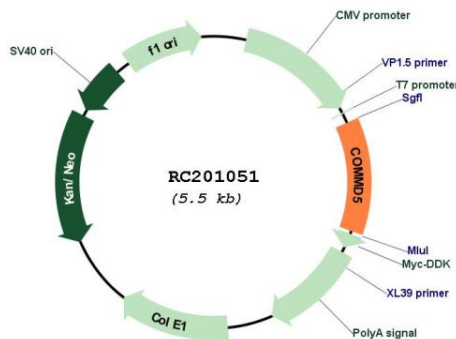
Cytogenetics: 8q24.3

Protein Families: Druggable Genome

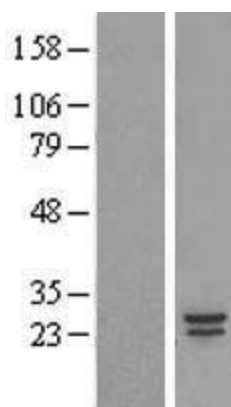
MW: 24.7 kDa

Gene Summary: May modulate activity of cullin-RING E3 ubiquitin ligase (CRL) complexes (PubMed:21778237). Negatively regulates cell proliferation. Negatively regulates cell cycle G2/M phase transition probably by transactivating p21/CDKN1A through the p53/TP53-independent signaling pathway. Involved in kidney proximal tubule morphogenesis (By similarity). Down-regulates activation of NF-kappa-B (PubMed:15799966).[UniProtKB/Swiss-Prot Function]

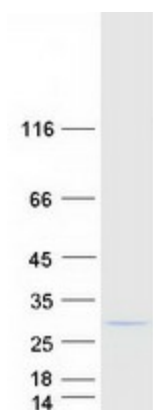
Product images:



Circular map for RC201051



Western blot validation of overexpression lysate (Cat# [LY421149]) using anti-DDK antibody (Cat# [TA50011-100]). Left: Cell lysates from untransfected HEK293T cells; Right: Cell lysates from HEK293T cells transfected with [RC216768] using transfection reagent MegaTran 2.0 (Cat# [TT210002]).



Coomassie blue staining of purified COMMD5 protein (Cat# [TP301051]). The protein was produced from HEK293T cells transfected with COMMD5 cDNA clone (Cat# RC201051) using MegaTran 2.0 (Cat# [TT210002]).