

Product datasheet for **RC201050**

KBTBD4 (NM_016506) Human Tagged ORF Clone

Product data:

Product Type:	Expression Plasmids
Product Name:	KBTBD4 (NM_016506) Human Tagged ORF Clone
Tag:	Myc-DDK
Symbol:	KBTBD4
Synonyms:	BKLHD4; HSPC252
Mammalian Cell Selection:	Neomycin
Vector:	pCMV6-Entry (PS100001)
E. coli Selection:	Kanamycin (25 ug/mL)



[View online »](#)

ORF Nucleotide Sequence:

>RC201050 ORF sequence
 Red=Cloning site Blue=ORF Green=Tags(s)

TTTTGTAATACGACTCACTATAGGGCGGCCGGGAATTCGTCGACTGGATCCGGTACCGAGGAGATCTGCC
 GCC**CGGATCGCC**

ATGGAATCACCAGAGGAGCCTGGAGCATCCATGGATGAGAACTACTTTGTGAACTACACTTTCAAAGATC
 GGTACACATTAGGCCGTGTGGCTCAAGGCATCATGAAACTGTGTCTAGAGGAGGAGCTCTTTGCTGATGT
 CACCATTCGGTGAAGGCCGGGAGTTTCAGCTCCATCGGCTGGTCTCTCAGCTCAGAGCTGCTTCTTC
 CGATCCATGTTCACTTCCAACCTGAAGGAGGCCACAACCGGGTATTGTGCTGCAGGATGTCAGCGAGT
 CTGTTTTCCAGCTCCTGGTTGATTATATCTACCATGGGACTGTGAACTTCGAGCTGAGGAGTTGCAGGA
 AATTTATGAGGTGTCAGACATGTATCAGCTGACATCTCTTTGAGGAATGCTCTCGTTTTTTGGCCCGC
 ACAGTGAAGTGGGAACTGCCTTCAGGTGATGTGGTGGCAGATCGGCACAGTATCCTGAGCTCTATA
 CGGCTGCCAAGCACTGTCCAAGACCCACTGGCCAGCTGCAGAATACAGAGGAATTTCTCCACTTGCC
 CCACCGCTTACTCACAGATATCATCTCGGATGGAGTTCGGTGTCTCAGAACCCAACAGAGGCAATAGAA
 GCCTGGATCAACTTTAATAAAGAGGAAAGAGAGGCTTTTGCAGAGTCACTCAGGACAAGCTTGAAGGAAA
 TTGGGGAGAATGTGCACATTTACCTGATTGGGAAAGAGTCATCTCGTACCACTCGTTGGCTGTGTCCTT
 GCACTGTGCAGAAGTACTCCATCAGTGAAGTGGCCAAAACAGTTTGTGCCACCAAGTACTGCGGCC
 TGCAAGCATGGTGGAGACTTGTATGTGGTGGGAGGGTCCATCCCACGGCGCATGTGGAAGTGAACAATG
 CCACCGTTGACTGGGAGTGGTGTCTCCTTTGCCTCGGGACCGGCTCCAGCACACCCTGGTGTCTGTGCC
 CGGAAAGATGCCATATTTCACTGGGTGGCAAGACACTGCAAGATACCCTCTCCAACGCAGTCAATTTAT
 TATCGCGTAGGTGATAATGTGTGGACAGAGACAACACTCAGCTAGAGGTGGCTGTGTGAGGGCTGCTGGTG
 CCAACCTCAACGGGATCATCTACTTACTAGGGGGGAGGAGAATGATCTGGACTTCTTTACCAAACCTTC
 CCGACTCATCCAGTGCTTTGACACAGAGACAGACAAATGCCATGTGAAGCCCTATGTGCTGCCCTTTGCA
 GGCCGCATGCACGCAGCTGTGCATAAAGATCTGGTGTTCATCGTGGCTGAAGGGGACTCCCTGGTGTGCT
 ACAATCCCTTGCTAGACAGCTTACCCGGCTTTGCCTTCTGAGGCCTGGAGCTCTGCCCATCCCTCTG
 GAAGATTGCCAGCTGTAAACGGGAGCATCTATGTCTTCCGGGACCGATATAAAAAGGGGGATGCCAACACC
 TACAAGCTTGACCCTGCCACTTCAGCCGTAAGTGTACAAGAGGTATTAAGGTGCTGCTTACCAATTTGC
 AGTTTGTGTTGGCC

ACGCGTACGCGGCCGCTCGAGCAGAACTCATCTCAGAAGAGGATCTGGCAGCAAATGATATCCTGGATT
 ACAAGGATGACGACGATAAGGTTTAA

Protein Sequence:

>RC201050 protein sequence
 Red=Cloning site Green=Tags(s)

MESPEEPGASMDENYFVNYTFKDRSHSGRVAQIMKLCLEELFADVTISVEGREFQLHRLVLSAQSCFF
 RSMFTSNLKEAHRVIVLQDVSESVFQLLDYIYHGTVKLRAEELQEIYEVSDMYQLTSLFEECSRFLAR
 TVQVGNCLQVMWLADRHSDPELYTAAKHCAKTHLAQLQNTTEFLHLPRLLDIISDGVPCSQNPTEAIE
 AWINFNKEEREAFESLRTSLKEIGENVHIYLIKESRTHSLAVSLHCAEDDISVSGQNSLCHQITAA
 CKHGGDLVYVGGSIPIRMMWKCNNATVDWEWCAPLPRDRLQHTLVSPGKDAIYSLGGKTLQDTLSNAVIY
 YRVGDNVWTEETQLEVAVSGAAGANLNGIYLLGGEENDLDFFTKPSRLIQCFDTEITDKCHVKPYVLPFA
 GRMHAHVHKDLVIVAEGDSLVCYNPLLDLDFTRLCLEAWSSAPSLWKIASCNGSIYVFRDRYKKGDANT
 YKLDPATSAVTVTRGIKVLTLNLQFVLA

TRTRPLEQKLISEEDLAANDILDYKDDDDKV

Chromatograms:

https://cdn.origene.com/chromatograms/mk6572_h07.zip

Restriction Sites:

Sgfl-Mlul

Cloning Scheme:


ACCN: NM_016506

ORF Size: 1554 bp

OTI Disclaimer: The molecular sequence of this clone aligns with the gene accession number as a point of reference only. However, individual transcript sequences of the same gene can differ through naturally occurring variations (e.g. polymorphisms), each with its own valid existence. This clone is substantially in agreement with the reference, but a complete review of all prevailing variants is recommended prior to use. [More info](#)

OTI Annotation: This clone was engineered to express the complete ORF with an expression tag. Expression varies depending on the nature of the gene.

Components: The ORF clone is ion-exchange column purified and shipped in a 2D barcoded Matrix tube containing 10ug of transfection-ready, dried plasmid DNA (reconstitute with 100 ul of water).

- Reconstitution Method:**
1. Centrifuge at 5,000xg for 5min.
 2. Carefully open the tube and add 100ul of sterile water to dissolve the DNA.
 3. Close the tube and incubate for 10 minutes at room temperature.
 4. Briefly vortex the tube and then do a quick spin (less than 5000xg) to concentrate the liquid at the bottom.
 5. Store the suspended plasmid at -20°C. The DNA is stable for at least one year from date of shipping when stored at -20°C.

RefSeq: [NM_016506.6](#)

RefSeq Size: 2468 bp

RefSeq ORF: 1557 bp

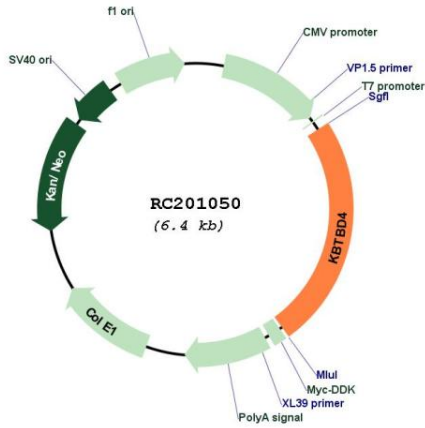
Locus ID: 55709

UniProt ID: [Q9NVX7](#)

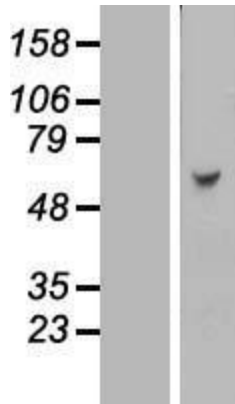
Cytogenetics: 11p11.2

MW: 58.1 kDa

Product images:



Circular map for RC201050



Western blot validation of overexpression lysate (Cat# [LY413311]) using anti-DDK antibody (Cat# [TA50011-100]). Left: Cell lysates from untransfected HEK293T cells; Right: Cell lysates from HEK293T cells transfected with [RC211572] using transfection reagent MegaTran 2.0 (Cat# [TT210002]).