

Product datasheet for RC201046

NFKBIL2 (TONSL) (NM_013432) Human Tagged ORF Clone

Product data:

Product Type:	Expression Plasmids
Product Name:	NFKBIL2 (TONSL) (NM_013432) Human Tagged ORF Clone
Tag:	Myc-DDK
Symbol:	NFKBIL2
Synonyms:	IKBR; NFKBIL2; SEMDSP
Mammalian Cell Selection:	Neomycin
Vector:	pCMV6-Entry (PS100001)
E. coli Selection:	Kanamycin (25 ug/mL)
ORF Nucleotide Sequence:	>RC201046 representing NM_013432 Red=Cloning site Blue=ORF Green=Tags(s)

TTTTGTAATACGACTCACTATAGGGCGGCCGGAATTCGTCGACTGGATCCGGTACCGAGGAGATCTGCC
GCC**CGATCGCC**

ATGAGGACCCGCCTCTATCTCAACCTGGGCCTCACCTTTGAGAGCCTGCAGCAGACAGCCCTGTGCAACG
ATTACTTCAGGAAGAGCATCTTCCTTGCAGGAGCAGAACCCACCTTTACGAGGACCTATTCGCGCCCGCTA
CAACCTGGGCACCATCCACTGGCGCGGGCCAGCACTCCAGGCTATGCGCTGCTTGGAGGGTGCCCGG
GAGTGTGCGCACACCATGAGGAAGCGGTTTCATGGAGAGCGAGTGTGCGTGGTTATTGCACAGGTCTCC
AAGACCTGGGAGACTTTTTGGCTGCCAAGCGAGCCCTGAAGAAGGCTACAGGCTGGGCTCCAGAAAGCC
TGTGCAGAGGGCAGCCATCTGTCAAGACCTCCAGCATGTGCTGGCAGTGGTCCGGCTGCAGCAACAGCTG
GAAGAGGCTGAGGGCAGAGACCCCTCAGGGTGCCATGGTCATCTGTGAGCAGCTAGGGGACCTCTTCTCCA
AGGCAGGAGACTTTCCAGGGCAGCTGAGGCTTACCAGAAGCAGCTGCGTTTTGCTGAGCTGCTGGACAG
ACCGGGTGCTGAGCGGGCCATCATCCACGTGTCCCTGGCCACCACACTGGGAGACATGAAGGACCACCAT
GGGGCCGTGCGCCACTATGAGGAGGAAGTGGGCTGCGCAGCGGCAACGTGCTGGAGGAGGCCAAGACCT
GGCTGAACATTGCACTGTCCCGGAGGAGGCGGGCGATGCCTACGAGCTGCTGGCCCCGTGCTTCCAGAA
AGCGCTCAGCTGTGCCAGCAGGCCAGCGTCCCAGCTGCAGAGGCAGGTCTTGACATCTCCATACC
GTGCAGCTGAGGCTGCAGCCCCAGGAGGCCCTGAGACCGAAACCAGACTGCGGGAGCTCAGTGTAGCTG
AAGATGAAGATGAGGAGGAGGAGGCGGAGGAGGCGGAGCCACAGCGGAGAGCGAAGCCCTGGAGGCGCG
CGAGGTGGAGCTCTCAGAGGGCGAGGACACACCGATGGCCTGACCCCGAGCTGGAGGAGGACGAGGAG
CTTCAGGGCCACCTGGGCGCGGGAAGGGGAGCAAGTGAACCGGCGAAACGACATGGGGGAGACCTGCTG
TGCACCGAGCCTGCATCGAGGGCCAGCTGCGCCGCTCCAGGACCTTGTGAGGCAGGGCCACCCCTTAA
CCCTCGGGACTACTGTGGCTGGACACCTCTGCACGAGGCTGCAACTACGGGCATCTAGAAATTGTCGCG
TTCTGCTGGACCAGGGGCCAGTGGACGACCCAGGTGGCCAGGGCTGCGAAGGCATCACCCCTCC
ACGATGCCCTCACTGTGGCCACTTCGAGGTGGCTGAGCTGCTGCTTGAACGGGGGGCGTCCGTCACCT
CCGCACTCGAAAGGCCCTCAGCCGCTGGAGACGCTGCAGCAGTGGTGAAGCTGTACCGCAGGGACCTG



GACCTGGAGACGCGGCAGAAAGGCCAGGGCCATGGAGATGCTGCTCCAGGCGGCTGCCTCGGGCCAAGATC
CCCACAGCTCCCAGGCCTTCCACACCCCAAGCAGCCTTCTGTTTGACCCCGAGACCTCTCCTCCTTTGAG
CCCCTGCCAGAAACCCCTCTAATAGCACTAGACTCCCAGAGGCCTCTCAGGTCCATGTCAGGGTCTCC
CCAGGGCAGGCGGCACCAGCCATGGCCAGGCCTCGGAGGAGCAGGCATGGCCAGCCAGCAGCAGCAGCA
GCTCAGAAGGCGAGGACAGCGCAGGCCCGCACGGCCGTCCCAGAAGAGGCCTCGGTGCTCGGCCACAGC
ACAACGGGTGGCAGCCTGGACGCCTGGCCCCGCCAGCAACAGGGAAGCAGCCACAGCCAGCACCAGCCGG
GCAGCCTACCAGGCAGCCATCCGGGGTGTGGGCAGTGTCTCAGAGCCGGCTGGGGCTGGCCACCCGGGG
GCCACAGCAAAGCCCTTGCCCCCAGGCAGCGCTCATCCCGAGGAGGAGTGCCTGGCTGGGGACTGGCT
GGAGCTGGACATGCCCTGACCCGACGCGCGGCCCGCCCCGGGCACTGGAGACAACCGCAGGCC
AGTAGTACCTCTGGGTCGGACAGTGAGGAGAGCAGGCCCGTGCCGAGCCAAGCAGGTCCGCCTGACCT
GCATGCAGAGTTGCAGTGCGCCAGTTAACGCAGGGCCCAGCAGCCTGGCTTCAAACTCCAGGGAGCCC
CAGCACCACCAGGGTCTCAGAGCCAGTGGGGACAGCTCTGCGGCAGGCCAGCCCTTGGTCCGGCCCCG
CCCCCTCCATCCGGTTCGAGTCAAGTTCAGGATCATCTTCTCCTCATCCCTGTCCACACAGCAGTG
ACACCCACTCTGTGGCTGGCTGGCCGAGCAGGGGCCAGCGCTACTACCAGACCTGCGGGCTGTGCC
CAGGCTCACCTACGAAAGAGGGGGCCCTGCTGGCCCCACAGGACCTCATCCCTGATGTGCTGCAGAGC
AATGACGAGGTGTGGCTGAGGTGACTTCTGTGGGACCTGCCCCGTTGACTGACCCTACCGCAGGGCCT
GCCAGAGCCTGGGGCAAGGGGAGCACAACAGGTGCTGCAGGCCGTGGAGCTCCAGGGCTTGGGCCTCTC
GTTCAGCGCTGCTCCCTGGCCCTGGACCAGGCCAGCTTACACCCTGCTGCGGGCCCTCAAGTGCAC
ACAGCACTCCGGGAGCTGCGCCTGGCAGGGAACCGGCTGGGGACAAGTGTGGCTGAGCTGGTGGCTG
CCCTGGGCACCATGCCAGCCTGGCCCTCCTTGACCTCTCCTCCAATCACCTGGTCCCAGGGCCTGCG
CCAGCTTGCCATGGGGCTCCCAGGCCAAGCCACCTTGACAGTGTGGAGGAGCTGGACTTAAGCATGAAC
CCCCTGGGGGACGGCTGTGGCCAGTCCCTGGCCCTCCCTCCTGCACGCCTGCCCTTACTCAGCACCTGC
GCCTGCAGGCGTGTGGCTTCGGCCCCAGTTCCTTCTGAGCCACCAGACAGCACTGGGTAGTGTCTTTCCA
AGATGCTGAGCACCTGAAGACCCTGTCCCTGTCTACAACGCCCTGGGAGCCCTGCCCTGGCCAGGACC
CTGCAGAGCCTGCCCGCCGGCACCTCCTGCACCTTAGAGCTCAGCTCCGTGGCAGCCGGCAAGGGTGATT
CGGACCTCATGGAGCCTGTATTCCGATACCTGGCCAAGGAAGGCTGTGCTCTAGCCACCTGACCCTGTC
TGCAAACCACCTGGGGACAAGGCTGTTAGAGACCTGTGCAGATGTCTCTCTGTGCCCTCACTCATC
TCACTGGATCTGTCTGCCAACCTGAGATCAGCTGTGCCAGCTTGAAGAGCTCCTGTCCACCCTCCAAA
AGCGGCCCAAGGCCTTAGCTTCCTTGGCCTGTCAGGCTGCGCCGTCCAGGGTCCCCTGGGCTGGGCT
GTGGGACAAGATAGCCGCGCAGCTCCGGAACTGCAGCTGTGCAGCAGACGCCTCTGCGCTGAGGACAGG
GACGCCCTGCGCCAGCTGCAGCCAGTCGGCCGGGCCCGGCGAGTGCACGCTGGACCACGGCTCCAAGC
TCTTCTTTCGGCCCTC

ACGCGTACGCGGCCGCTCGAGCAGAAACTCATCTCAGAAGAGGATCTGGCAGCAAATGATATCCTGGATT
ACAAGGATGACGACGATAAGGTTTAA

Protein Sequence: >RC201046 representing NM_013432
Red=Cloning site Green=Tags(s)

MRTRLYLNLGLTFESLQQTALCNDYFRKSIFLAEQNHLYEDLFRARYNLGTIHWRAQHSQAMRCLEGAR
 ECAHTMRKRFMESECCVIAQVLQDLGDFLAALKRALKKAYRLGSQKPVQRAAICQNLQHVLA VVRLQQQL
 EEAEGRDPQGAMVICEQLGDLFSKAGDFPRAAEAYQKQLRFAELDRPGAERAI IHVSLATTLGDMKDHH
 GAVRHYEEELRLRSGNVLEEAKTWLNIALSREEAGDAYELLAPCFQKALSCAQQAQRPQLQRQVLQHLHT
 VQLRLQPQEAPETETRLREL SVAEDEDEEEEAEEAAATAESEALEAGEVELSEGEDD DGLTPQLEEDDEE
 LQGH LGRRKGSKNRRNDMGETLLHRACIEGQLRRVQDLVRQGHPLNPRDYCGWTP LHEACNYGHLEIVR
 FLLDHGA AVDDPGGQCGEGITPLHDALNCGHFEVAELLLERGASVTLRTRKGLSPLETLQQWVKLYRRDL
 DLETRQKARAMEMLLQAAA SGQDPHSSQAFHTPSSLL FDPETSPPLSPCPEPPSNSTR LPEASQVHVRVS
 PGQAAPAMARRSRHGPASSSSSEGEDSAGPARPSQKRPRCSATAQRVAAWTPGPASNREAA TASTSR
 AAYQAAIRGVGSAQSRLGPGPPRGH SKALAPQAAL IPEEECLAGDWLELD MPL TRSRPRPRGTGDNRRP
 SSTSGDSEESRPRARAKQVRL TCMQSCSAPVNAGPSSLASEPPGSPSTPRVSEPSGDSSAAGQPLGPAP
 PPPIRVRVQVQDHLFLIPVPHSSDTHSVAWLAEQAAQRY YQTCGLLPRLTLRKEGALLAPQDLIPDVLQS
 NDEVLAEVT SWDLPPLTDYRACQSLGQGEHQV LQAVELQGLGLSFSACSLALDQAQLTPLL RALKLH
 TALRELRLAGNRLGDKCVAELVAALGTMPSLALLDLSSNHLGPEGLRQLAMGLPGQATLQSEELD SMN
 PLGDGCGQSLASLLHACPLLSTLRLQACGFGPSFFLSHQ TALGSAFQDAEHLKTL SLSYNALGAPALART
 LQSLPAGTLLHLELSSVAAGKGDSDLMEPVFRYLAKEGCAL AHL TL SANHLGDKAVRDL CRCLSLCPSLI
 SLDL SANPEISCA SLEELLSTLQKRPQGLSFLGLSGCAVQGPLGLGLWDKIAAQLRELQLCSRRLCAEDR
 DALRQLQPSRPGPGECTLDHGSKLFFRRL

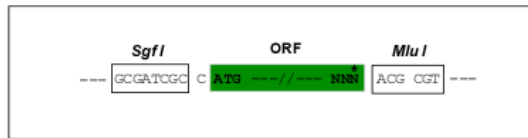
TRTRPLEQKLISEEDLAANDILDYKDDDDKV

Restriction Sites:

Sgfl-MluI

Cloning Scheme:

Cloning sites used for ORF Shuttling:



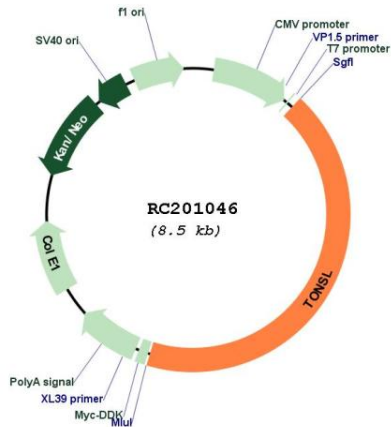
* The last codon before the Stop codon of the ORF

ACCN: NM_013432

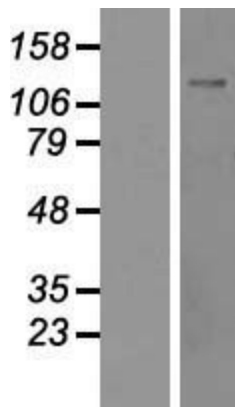
ORF Size: 3657 bp

OTI Disclaimer:	The molecular sequence of this clone aligns with the gene accession number as a point of reference only. However, individual transcript sequences of the same gene can differ through naturally occurring variations (e.g. polymorphisms), each with its own valid existence. This clone is substantially in agreement with the reference, but a complete review of all prevailing variants is recommended prior to use. More info
OTI Annotation:	This clone was engineered to express the complete ORF with an expression tag. Expression varies depending on the nature of the gene.
Components:	The ORF clone is ion-exchange column purified and shipped in a 2D barcoded Matrix tube containing 10ug of transfection-ready, dried plasmid DNA (reconstitute with 100 ul of water).
Reconstitution Method:	<ol style="list-style-type: none"> 1. Centrifuge at 5,000xg for 5min. 2. Carefully open the tube and add 100ul of sterile water to dissolve the DNA. 3. Close the tube and incubate for 10 minutes at room temperature. 4. Briefly vortex the tube and then do a quick spin (less than 5000xg) to concentrate the liquid at the bottom. 5. Store the suspended plasmid at -20°C. The DNA is stable for at least one year from date of shipping when stored at -20°C.
RefSeq:	NM_013432.2
RefSeq Size:	4489 bp
RefSeq ORF:	4137 bp
Locus ID:	4796
UniProt ID:	Q96HA7
Cytogenetics:	8q24.3
Protein Families:	Transcription Factors
MW:	132.6 kDa
Gene Summary:	The protein encoded by this gene is thought to be a negative regulator of NF-kappa-B mediated transcription. The encoded protein may bind NF-kappa-B complexes and trap them in the cytoplasm, preventing them from entering the nucleus and interacting with the DNA. Phosphorylation of this protein targets it for degradation by the ubiquitination pathway, which frees the NF-kappa-B complexes to enter the nucleus. [provided by RefSeq, Jul 2008]

Product images:



Circular map for RC201046



Western blot validation of overexpression lysate (Cat# [LY415543]) using anti-DDK antibody (Cat# [TA50011-100]). Left: Cell lysates from untransfected HEK293T cells; Right: Cell lysates from HEK293T cells transfected with RC201046 using transfection reagent MegaTran 2.0 (Cat# [TT210002]).