

## Product datasheet for RC201043

### TRBP (TARBP2) (NM\_004178) Human Tagged ORF Clone

#### Product data:

Product Type:	Expression Plasmids
Product Name:	TRBP (TARBP2) (NM_004178) Human Tagged ORF Clone
Tag:	Myc-DDK
Symbol:	TRBP
Synonyms:	LOQS; TRBP; TRBP1; TRBP2
Mammalian Cell Selection:	Neomycin
Vector:	pCMV6-Entry (PS100001)
E. coli Selection:	Kanamycin (25 ug/mL)
ORF Nucleotide Sequence:	>RC201043 ORF sequence Red=Cloning site Blue=ORF Green=Tags(s)

TTTTGTAATACGACTCACTATAGGGCGGCCGGAATTCGTCGACTGGATCCGGTACCGAGGAGATCTGCC  
GCC**CGATCGCC**

ATGAGTGAAGAGGAGCAAGGCTCCGGCACTACCACGGGCTGCGGGCTGCCTAGTATAGAGCAAATGCTGG  
CCGCCAACCCAGGCAAGACCCCGATCAGCCTTCTGCAGGAGTATGGGACCAGAATAGGGAAGACGCCTGT  
GTACGACCTTCTCAAAGCCGAGGGCCAAGCCCACCAGCCTAATTTACCTTCCGGGTACCGTTGGCGAC  
ACCAGTGCCTGGTCCAGGGCCCAAGCAAGGCAAGCACAAGGCAAGGAGTGGCCCTCAAAC  
ACCTCAAAGGGGGGAGCATGCTGGAGCCGCCCCTGGAGGACAGCAGTTCTTTTTCTCCCCTAGACTCTTC  
ACTGCCTGAGGACATTCGGTTTTACTGCTGCAGCAGCTGCTACCCAGTTCATCTGTAGTCCTAACCC  
AGGAGCCCCCATGGAAGTGCAGCCCCCTGTCTCCCCTCAGCAGTCTGAGTGAACCCCGTTGGTGCTC  
TGCAGGAGCTGGTGGTGCAGAAAGGCTGGCGGTTGCCGGAGTACACAGTACCCAGGAGTCTGGGCCAGC  
CCACCCGAAAGAATTCACCATGACCTGTGAGTGGAGCGTTTCATTGAGATTGGGAGTGGCACTTCCAAA  
AAATTGGCAAAGCGGAATGCGGCGGCCAAAATGCTGCTTCGAGTGCACACGGTGCCTCTGGATGCCCGG  
ATGGCAATGAGGTGGAGCCTGATGATGACCACTTCTCCATTGGTGTGGGCTCCCCTGGATGGTCTTCG  
AAACCGGGGCCAGGTTGCACCTGGGATCTCTACGAAATTCAGTAGGAGAGAAGATCCTGTCCCTCCGC  
AGTTGCTCCCTGGGCTCCCTGGGTGCCCTGGGCCCTGCCTGCTGCCGTGTCTCAGTGGCTCTCTGAGG  
AGCAGGCCTTTCAGTACGCTACCTGGATATTGAGGAGCTGAGCCTGAGTGGACTCTGCCAGTGCCTGGT  
GGAAGTGTCCACCCAGCCGGCCACTGTGTGTCATGGCTCTGCAACCACCGAGGAGGCAGCCCGTGGTGG  
GCTGCCCGCCGTGCCCTGCAGTACCTCAAGATCATGGCAGGCAGCAAG

**ACGCGT**ACGCGGCCGCTCGAGCAGAAACTCATCTCAGAAGAGGATCTGGCAGCAAATGATATCCTGGATT  
ACAAGGATGACGACGATAAGGTTTAA



[View online »](#)

**Protein Sequence:** >RC201043 protein sequence  
Red=Cloning site Green=Tags(s)

MSEEEQGS GTT TGCGLPSIEQMLAANPGKTPISLLQEYGTTRIGKTPVYDLLKAEGQAHQPNTFRVTVGD  
 TSCTGQGSPKKAHKAAEVALKHLKGGSMLEPALEDSSSF SPLDSSLPEDIPVFTAAAAATPVPSVVL  
 RSPPMELQPPVSPQQSECNPVGALQELVVQKGWRLPEYVTQESGPAHRKEFTMTCRVERFIEIGSGTSK  
 KLAKRNAAKMLLRVHTVPLDARDGNEVEPDDDDHFSIGVGSRLDGLRNRGPGCTWDSL RNSVGEKILSLR  
 SCSLGS LGALGPACCRVLS ESEQAFHVS YLDIEELSL SGLCQCLVELSTQPATVCHGSATTREARGE  
 AARRALQYLKIMAGSK

TRTRPLEQKLISEEDLAANDILDYKDDDDKV

**Chromatograms:** [https://cdn.origene.com/chromatograms/mk6669\\_g06.zip](https://cdn.origene.com/chromatograms/mk6669_g06.zip)

**Restriction Sites:** SgfI-MluI

**Cloning Scheme:**



\* The last codon before the Stop codon of the ORF

**ACCN:** NM\_004178

**ORF Size:** 1101 bp

**OTI Disclaimer:** The molecular sequence of this clone aligns with the gene accession number as a point of reference only. However, individual transcript sequences of the same gene can differ through naturally occurring variations (e.g. polymorphisms), each with its own valid existence. This clone is substantially in agreement with the reference, but a complete review of all prevailing variants is recommended prior to use. [More info](#)

**OTI Annotation:** This clone was engineered to express the complete ORF with an expression tag. Expression varies depending on the nature of the gene.

**Components:** The ORF clone is ion-exchange column purified and shipped in a 2D barcoded Matrix tube containing 10ug of transfection-ready, dried plasmid DNA (reconstitute with 100 ul of water).

**Reconstitution Method:**

1. Centrifuge at 5,000xg for 5min.
2. Carefully open the tube and add 100ul of sterile water to dissolve the DNA.
3. Close the tube and incubate for 10 minutes at room temperature.
4. Briefly vortex the tube and then do a quick spin (less than 5000xg) to concentrate the liquid at the bottom.
5. Store the suspended plasmid at -20°C. The DNA is stable for at least one year from date of shipping when stored at -20°C.

**RefSeq:** [NM\\_004178.2](#)

**RefSeq Size:** 1448 bp

**RefSeq ORF:** 1038 bp

**Locus ID:** 6895

**UniProt ID:** [Q15633](#)

**Cytogenetics:** 12q13.13

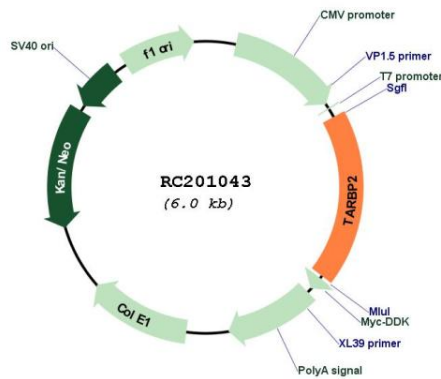
**Domains:** DSRM

**Protein Families:** Stem cell - Pluripotency

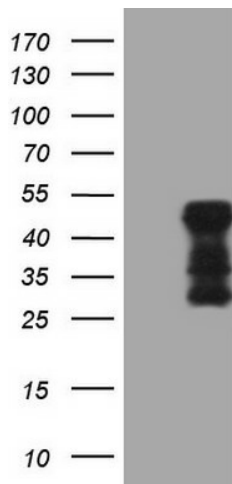
**MW:** 39 kDa

**Gene Summary:** HIV-1, the causative agent of acquired immunodeficiency syndrome (AIDS), contains an RNA genome that produces a chromosomally integrated DNA during the replicative cycle. Activation of HIV-1 gene expression by the transactivator Tat is dependent on an RNA regulatory element (TAR) located downstream of the transcription initiation site. The protein encoded by this gene binds between the bulge and the loop of the HIV-1 TAR RNA regulatory element and activates HIV-1 gene expression in synergy with the viral Tat protein. Alternative splicing results in multiple transcript variants encoding different isoforms. This gene also has a pseudogene. [provided by RefSeq, Jul 2008]

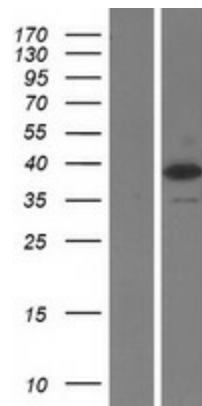
Product images:



Circular map for RC201043



HEK293T cells were transfected with the pCMV6-ENTRY control (Cat# [PS100001], Left lane) or pCMV6-ENTRY TARBP2 (Cat# RC201043, Right lane) cDNA for 48 hrs and lysed. Equivalent amounts of cell lysates (5 ug per lane) were separated by SDS-PAGE and immunoblotted with anti-TARBP2 (Cat# [TA808481])(1:2000). Positive lysates [LY418167] (100ug) and [LC418167] (20ug) can be purchased separately from OriGene.



Western blot validation of overexpression lysate (Cat# [LY408744]) using anti-DDK antibody (Cat# [TA50011-100]). Left: Cell lysates from untransfected HEK293T cells; Right: Cell lysates from HEK293T cells transfected with [RC213967] using transfection reagent MegaTran 2.0 (Cat# [TT210002]).