

Product datasheet for **RC201038**

SLC25A13 (NM_014251) Human Tagged ORF Clone

Product data:

Product Type:	Expression Plasmids
Product Name:	SLC25A13 (NM_014251) Human Tagged ORF Clone
Tag:	Myc-DDK
Symbol:	SLC25A13
Synonyms:	ARALAR2; CITRIN; CTLN2; NICCD
Mammalian Cell Selection:	Neomycin
Vector:	pCMV6-Entry (PS100001)
E. coli Selection:	Kanamycin (25 ug/mL)



[View online »](#)

ORF Nucleotide
Sequence:

>RC201038 ORF sequence

Red=Cloning site Blue=ORF Green=Tags(s)

TTTTGTAATACGACTCACTATAGGGCGGCCGGAATTCGTCGACTGGATCCGGTACCGAGGAGATCTGCC
GCCGCGATCGCCATGGCGGCCGCCAAGGTGGCTTTAACCAAGAGAGCAGATCCAGCTGAGCTTAGAACAATATTTTTGAAGT
ATGCAAGCATTGAGAAAAACGGTGAATTTTTCATGTCCCAATGACTTTGTCACTCGATACTTGAACAT
TTTTGGAGAAAGCCAGCCTAATCCAAGACTGTGGAACTTTTAAGTGGAGTGGTGGATCAGACCAAGAT
GGATTAATATCTTTCAAGAATTTGTTGCCTTTGAATCTGTCCTGTGCCCCCTGATGCTTTGTTTATGG
TAGCCTTTAGCTGTTTGACAAAGCTGGCAAAGGAGAAGTAACTTTGAGGATGTTAAGCAAGTTTTTGG
ACAGACCACAATTCATCAACATATTCCATTTAACTGGGATTGAGAATTTGTGCAACTACATTTTGGAAAA
GAAAGAAAAGACACCTGACATATGCGGAATTTACTCAGTTTTTATTGGAATACAACCTGGAGCACGCAA
AGCAAGCCTTTGTCAACGGGACAATGCTAGGACTGGGAGAGTCACAGCCATCGACTTCCGAGACATCAT
GGTCACCATCCGCCCCATGCTTGTACTCTTTTGTAGAAGAATGTCTAGTAGCTGCTGCGAGGTACC
ACATCCCATCAAGTTAGTTTCTCTATTTAATGGATTTAATTCGCTCCTTAACAACATGGAACCTATTA
GAAAGATCTATAGCACTCTGGCTGGCACCAGGAAAGATGTTGAAGTGACTAAGGAGGAGTTTGTCTGGC
AGCTCAGAAATTTGGTCAGGTTACACCCATGGAAGTTGACATCTTGTTCAGTTAGCAGATTTATATGAG
CCAAGGGGACGTATGACCTTAGCAGACATTGAACGGATTGCTCCTCTGGAAGAGGGAACTCTGCCCTTA
ACTTGGCTGAGGCCAGAGGCAGAGGCCCTCAGGTGATTGAGCTCGACCAGTTCTTCTACAAGTTGAGAG
GTGCGCCTACAGTTTGGTCTGGGTTCTGTTGCTGGAGCTGTTGGAGCCACTGCTGTGTATCCTATCGAT
CTTTGACTGTTTTAAGAAAGTGTACGCTATGAAGGCTTCTTTGGACTGTATAGAGGCTGTTGCCACA
GTTATTGGGAGTTGCCCCAGAGAAGGCCATAAACTTACAGTGAACGATTTTGTGAGGGATAAATTTATG
CACAAAGATGGTTCGGTCCCACTTGCAGCAGAAATTTCTGCTGGAGGCTGCGCTGGAGGCTCCAGGTGA
TTTTACAAAATCTTTAGAAATCGTCAAGATCCGTTTGAAGTGGCAGGAGAAATCACCCTGGTCTCG
AGTCAGTGCTCTGTCTGTCGTGCGGGACCTGGGGTTTTTGGGATCTACAAGGGTGCCAAAGCATGCTTT
CTGCGGGACATTCCTTTCTCGGCCATCTACTTCCGTGCTATGCTCATGTGAAGGCTTCTTTGCAAATG
AAGATGGCAGGTTAGCCAGGAAGCCTGCTCTTAGCTGGTGCCATAGCTGGTATGCCTGCAGCATCTTT
AGTGACCCCTGCTGATGTTATCAAGACGAGATTACAGGTGGCTGCCCGGGCTGGCCAAACCACTTACAGC
GGAGTGATAGACTGCTTTAGAAAGATACTGCGTGAAGAAGGACAAAAGCTCTGTGGAAGGGAGCTGGT
CTCGTGATTTTCGATCCTCACCCAGTTTGGTGTAACTTTGCTGACTTACGAATTGCTACAGCGATGGTT
CTACATTGATTTTGGAGGAGTAAACCCATGGGATCAGAGCCAGTTCTAAATCCAGGATCAACCTGCCCT
GCCCCGAATCCTGATCACGTTGGGGCTACAACTGGCAGTTGCTACATTTGCAGGGATTGAAAACAAAT
TTGGACTTTACCTACCTCTTCAAGCCATCAGTATCTACCTCAAAGGCTATTGGTGGAGGCCCAACGCGTACGCGGCCGCTCGAGCAGAACTCATCTCAGAAGAGGATCTGGCAGCAATGATATCCTGGATT
ACAAGGATGACGACGATAAGGTTTAA

Protein Sequence: >RC201038 protein sequence
Red=Cloning site Green=Tags(s)

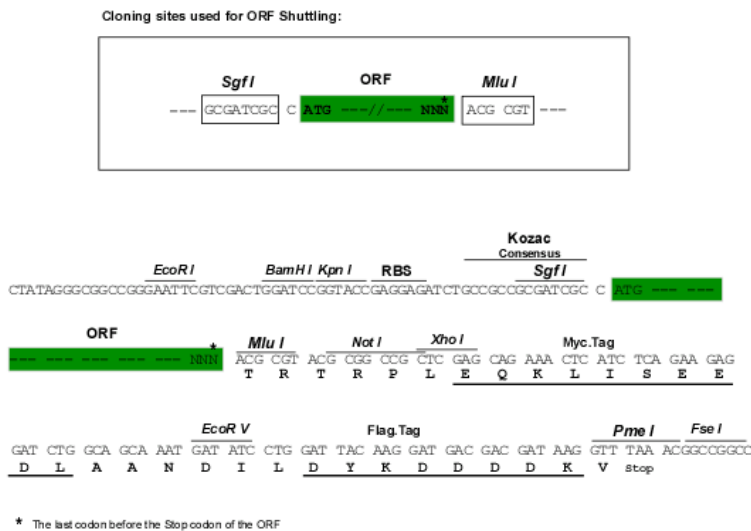
MAAAKVALTKRADPAELRTIFLKYASIEKNGEFFMSPNDFVTRYLNIFGESQPNPKTVELLSGVVDQTKD
 GLISFQEFVAFESVLCAPDALFMVAFQLFDKAGKGEVTFEDVKQVFQQTIIHQHIPFNWSEFVQLHFGK
 ERKRHLTYAEFTQFLLEIQLEHAKQAFVQRDNARTGRVTAIDFRDIMVTIRPHVLTFFVEECLVAAAAGGT
 TSHQVFSYFNGFNSSLNMMELIRKIYSTLAGTRKDVEVTKEEFVLAQAQKFGQVTPMEVDILFQLADLYE
 PRGRMTLADIERIAPLEEGTLPFNLAEAQRQKASGDSARPVLLQVAESAYRFGLSVAGAVGATAVYPID
 LVKTRMQNRSTGSFVGELMYKNSFDCFKKVLRYEGFFGLYRGLLPQLLGVAPEKAIKLTVNDFVRDKFM
 HKDGSVPLAAEILAGGCAGGSQVIFTNPLEIVKIRLQVAGEITTGPRVSALSVVRDLGFFGIYKAKACF
 LRDIPFSAIYFPCYAHVKASFANEDGQVSPGSLLLAGAIAGMPAASLVTPADVIKTRLQVAARAGQTTYS
 GVIDCFRILREEGPKALWKAGARVFRSSPQFGVTLLTYELLQRWFYIDFGGKPMGSEPVPKSRINLP
 APNPDHVGKYLAVATFAGIENKFLYLPLFKPSVSTSKAIGGGP

TRTRPLEQKLISEEDLANDILDYKDDDDKV

Chromatograms: https://cdn.origene.com/chromatograms/mk6690_c09.zip

Restriction Sites: SgfI-MluI

Cloning Scheme:



ACCN: NM_014251

ORF Size: 2025 bp

OTI Disclaimer: The molecular sequence of this clone aligns with the gene accession number as a point of reference only. However, individual transcript sequences of the same gene can differ through naturally occurring variations (e.g. polymorphisms), each with its own valid existence. This clone is substantially in agreement with the reference, but a complete review of all prevailing variants is recommended prior to use. [More info](#)

OTI Annotation: This clone was engineered to express the complete ORF with an expression tag. Expression varies depending on the nature of the gene.

Components: The ORF clone is ion-exchange column purified and shipped in a 2D barcoded Matrix tube containing 10ug of transfection-ready, dried plasmid DNA (reconstitute with 100 ul of water).

Reconstitution Method:

1. Centrifuge at 5,000xg for 5min.
2. Carefully open the tube and add 100ul of sterile water to dissolve the DNA.
3. Close the tube and incubate for 10 minutes at room temperature.
4. Briefly vortex the tube and then do a quick spin (less than 5000xg) to concentrate the liquid at the bottom.
5. Store the suspended plasmid at -20°C. The DNA is stable for at least one year from date of shipping when stored at -20°C.

RefSeq: [NM_014251.3](#)

RefSeq Size: 3204 bp

RefSeq ORF: 2028 bp

Locus ID: 10165

UniProt ID: [Q9UJS0](#)

Cytogenetics: 7q21.3

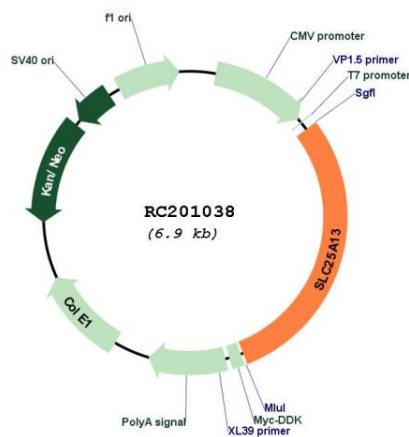
Domains: mito_carr, EFh

Protein Families: Druggable Genome

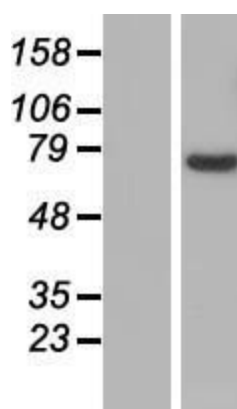
MW: 74.2 kDa

Gene Summary: This gene is a member of the mitochondrial carrier family. The encoded protein contains four EF-hand Ca(2+) binding motifs in the N-terminal domain, and localizes to mitochondria. The protein catalyzes the exchange of aspartate for glutamate and a proton across the inner mitochondrial membrane, and is stimulated by calcium on the external side of the inner mitochondrial membrane. Mutations in this gene result in citrullinemia, type II. Multiple transcript variants encoding different isoforms have been found for this gene. [provided by RefSeq, May 2009]

Product images:



Circular map for RC201038



Western blot validation of overexpression lysate (Cat# [LY415407]) using anti-DDK antibody (Cat# [TA50011-100]). Left: Cell lysates from untransfected HEK293T cells; Right: Cell lysates from HEK293T cells transfected with RC201038 using transfection reagent MegaTran 2.0 (Cat# [TT210002]).