

Product datasheet for **RC201036**

FAM3C (NM_014888) Human Tagged ORF Clone

Product data:

Product Type:	Expression Plasmids
Product Name:	FAM3C (NM_014888) Human Tagged ORF Clone
Tag:	Myc-DDK
Symbol:	FAM3C
Synonyms:	GS3786; ILEI
Mammalian Cell Selection:	Neomycin
Vector:	pCMV6-Entry (PS100001)
E. coli Selection:	Kanamycin (25 ug/mL)
ORF Nucleotide Sequence:	>RC201036 ORF sequence Red=Cloning site Blue=ORF Green=Tags(s)

TTTTGTAATACGACTCACTATAGGGCGGCCGGAATTCGTCGACTGGATCCGGTACCGAGGAGATCTGCC
GCC**CGATCGCC**

ATGAGGGTAGCAGGTGCTGCAAAGTTGGTGGTAGCTGTGGCAGTGTTCCTACTGACATTTTATGTTATTT
CTCAAGTATTTGAAATAAAAATGGATGCAAGTTTAGGAAATCTATTTGCAAGATCAGCATTGGACACAGC
TGCACGTTCTACAAAGCCTCCCAGATATAAGTGTGGGATCTCAAAGCTTGCCCTGAGAAGCATTTTGCT
TTTAAATGGCAAGTGGAGCAGCCAACGTGGTGGGACCCAAAATCTGCCTGGAAGATAATGTTTTAATGA
GTGGTGTAAAGAATAATGTTGGAAGAGGGATCAATGTTGCCTTGGCAAATGGAAAAACAGGAGAAGTATT
AGACACTAAATATTTGACATGTGGGGAGGAGATGTGGCACCATTATTGAGTTTCTGAAGGCCATACAA
GATGGAACAATAGTTTTAATGGGAACATACGATGATGGAGCAACCAAACTCAATGATGAGGCACGGCGGC
TCATTGCTGATTTGGGGAGCACATCTACTAATCTTGGTTTTAGAGACAACTGGGTCTTCTGTGGTGG
GAAGGGCATTAAAGACAAAAGCCCTTTTGAACAGCACATAAAGAACAATAAGGATACAAACAAATATGAA
GGATGGCCTGAAGTTGTAGAAATGGAAGGATGCATCCCCAGAAGCAAGAC

ACGCGTACGCGGCCGCTCGAGCAGAACTCATCTCAGAAGAGGATCTGGCAGCAAATGATATCCTGGATT
ACAAGGATGACGACGATAAGGTTTAA



[View online »](#)

Protein Sequence: >RC201036 protein sequence
Red=Cloning site Green=Tags(s)

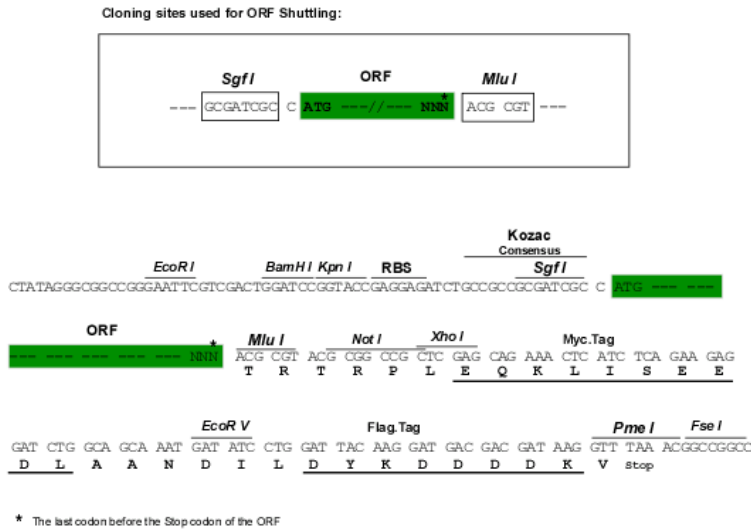
MRVAGAAKLVVAVAVFLLTFYVISQVFEIKMDASLGNLFARSALDTAARSTKPPRYKCGISKACPEKHFA
 FKMASGAANVVGPKICLEDNVLMSGVKNNVGRGINVALANGKTGEVLDTKYFDMWGGDVAPFIEFLKAIQ
 DGTIVLMGTYDDGATKLNDEARRLIADLGSTITNLGFRDNWVFCGGKGIKTKSPFEQHIKNNKDTNKYE
 GWPEVVEMEGCIPOKQD

TRTRPLEQKLISEEDLAANDILDYKDDDDKV

Chromatograms: https://cdn.origene.com/chromatograms/mk6679_f05.zip

Restriction Sites: SgfI-MluI

Cloning Scheme:



ACCN: NM_014888

ORF Size: 681 bp

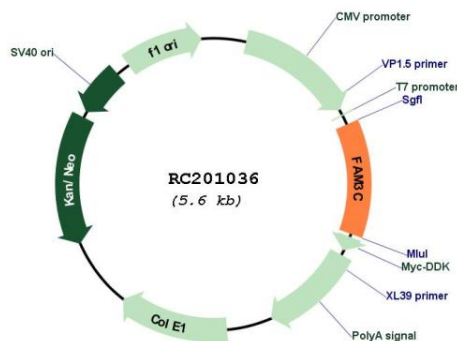
OTI Disclaimer: Due to the inherent nature of this plasmid, standard methods to replicate additional amounts of DNA in E. coli are highly likely to result in mutations and/or rearrangements. Therefore, OriGene does not guarantee the capability to replicate this plasmid DNA. Additional amounts of DNA can be purchased from OriGene with batch-specific, full-sequence verification at a reduced cost. Please contact our customer care team at custsupport@origene.com or by calling 301.340.3188 option 3 for pricing and delivery.

The molecular sequence of this clone aligns with the gene accession number as a point of reference only. However, individual transcript sequences of the same gene can differ through naturally occurring variations (e.g. polymorphisms), each with its own valid existence. This clone is substantially in agreement with the reference, but a complete review of all prevailing variants is recommended prior to use. [More info](#)

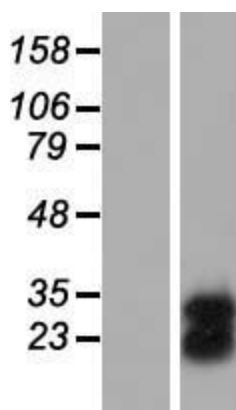
OTI Annotation: This clone was engineered to express the complete ORF with an expression tag. Expression varies depending on the nature of the gene.

Components:	The ORF clone is ion-exchange column purified and shipped in a 2D barcoded Matrix tube containing 10ug of transfection-ready, dried plasmid DNA (reconstitute with 100 ul of water).
Reconstitution Method:	<ol style="list-style-type: none"> 1. Centrifuge at 5,000xg for 5min. 2. Carefully open the tube and add 100ul of sterile water to dissolve the DNA. 3. Close the tube and incubate for 10 minutes at room temperature. 4. Briefly vortex the tube and then do a quick spin (less than 5000xg) to concentrate the liquid at the bottom. 5. Store the suspended plasmid at -20°C. The DNA is stable for at least one year from date of shipping when stored at -20°C.
RefSeq:	<u>NM_014888.3</u>
RefSeq Size:	2552 bp
RefSeq ORF:	684 bp
Locus ID:	10447
UniProt ID:	<u>Q92520</u>
Cytogenetics:	7q31.31
Protein Families:	Secreted Protein, Transmembrane
MW:	24.7 kDa
Gene Summary:	This gene is a member of the family with sequence similarity 3 (FAM3) family and encodes a secreted protein with a GG domain. A change in expression of this protein has been noted in pancreatic cancer-derived cells. [provided by RefSeq, Mar 2010]

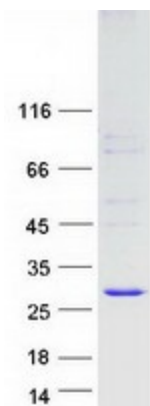
Product images:



Circular map for RC201036



Western blot validation of overexpression lysate (Cat# [LY421876]) using anti-DDK antibody (Cat# [TA50011-100]). Left: Cell lysates from untransfected HEK293T cells; Right: Cell lysates from HEK293T cells transfected with [RC218912] using transfection reagent MegaTran 2.0 (Cat# [TT210002]).



Coomassie blue staining of purified FAM3C protein (Cat# [TP301036]). The protein was produced from HEK293T cells transfected with FAM3C cDNA clone (Cat# RC201036) using MegaTran 2.0 (Cat# [TT210002]).