

Product datasheet for RC201029

SLMO2 (PRELID3B) (NM_016045) Human Tagged ORF Clone

Product data:

Product Type: Expression Plasmids
Product Name: SLMO2 (PRELID3B) (NM_016045) Human Tagged ORF Clone
Tag: Myc-DDK
Symbol: SLMO2
Synonyms: C20orf45; dj543j19.5; SLMO2
Mammalian Cell Selection: Neomycin
Vector: pCMV6-Entry (PS100001)
E. coli Selection: Kanamycin (25 ug/mL)
ORF Nucleotide Sequence: >RC201029 ORF sequence
 Red=Cloning site Blue=ORF Green=Tags(s)

TTTTGTAATACGACTCACTATAGGGCGCCGGGAATTCGTCGACTGGATCCGGTACCGAGGAGATCTGCC
 GCC**CGATCGCC**

ATGAAGATCTGGACTTCGGAGCACGTCTTTGACCACCCGTGGGAACTGTTACAACAGCTGCAATGCAGA
 AATACCCAAACCCTATGAACCAAGTGTGGTTGGAGTTGATGTGTTGGACAGACATATAGATCCCTCTGG
 AAAGTTGCACAGCCACAGACTTCTCAGCACAGAGTGGGGACTGCCTTCCATTGTGAAGTCTCTTATTGGT
 GCAGCAAGAACGAAAACATATGTGCAAGAACATTCTGTAGTTGATCCTGTAGAGAAAACAATGGAACCTA
 AATCTACTAATATTTCAATTTACAACATGGTTTCAGTAGATGAGAGACTTATATACAACCACATCCTCA
 GGATCCAGAAAAACTGTTTTGACACAAGAAGCCATAATTACCGTGAAAGGAGTTAGCCTCAGCAGTTAC
 CTTGAAGGACTGATGGCAAGTACGATATCCTCAAATGCTAGTAAAGGCCGAGAAGCAATGGAATGGGTAA
 TACATAAATTAATGCTGAGATTGAAGAACTGACAGCCTCAGCAAGAGGAACCATAAGGACTCCAATGGC
 AGCAGCAGCGTTTGCAGAGAAG

ACGCGTACGCGGCCGCTCGAGCAGAACTCATCTCAGAAGAGGATCTGGCAGCAATGATATCCTGGATT
 ACAAGGATGACGACGATAAGGTTTAA

Protein Sequence: >RC201029 protein sequence
 Red=Cloning site Green=Tags(s)

MKIWTSEHVFDPWETVTTAAMQKYPNPMNPSVVGVDLDRHIDPSGKLSHRLSTEWGLPSIVKSLIG
 AARTKYVQEHVVDPEKTMELKSTNISFTNMVSDERLIYKPHQDPEKTVLTQEAIITVKGVSLSY
 LEGLMASTISSNASKGREAMEWVIHKLNAEIEELTASARGTIRTPMAAAFAEK

TRTRPLEQKLISEEDLAANDILDYKDDDDKV



[View online »](#)

Chromatograms: https://cdn.origene.com/chromatograms/mk6771_a07.zip

Restriction Sites: SgfI-MluI

Cloning Scheme:



ACCN: NM_016045

ORF Size: 582 bp

OTI Disclaimer: The molecular sequence of this clone aligns with the gene accession number as a point of reference only. However, individual transcript sequences of the same gene can differ through naturally occurring variations (e.g. polymorphisms), each with its own valid existence. This clone is substantially in agreement with the reference, but a complete review of all prevailing variants is recommended prior to use. [More info](#)

OTI Annotation: This clone was engineered to express the complete ORF with an expression tag. Expression varies depending on the nature of the gene.

Components: The ORF clone is ion-exchange column purified and shipped in a 2D barcoded Matrix tube containing 10ug of transfection-ready, dried plasmid DNA (reconstitute with 100 ul of water).

Reconstitution Method:

1. Centrifuge at 5,000xg for 5min.
2. Carefully open the tube and add 100ul of sterile water to dissolve the DNA.
3. Close the tube and incubate for 10 minutes at room temperature.
4. Briefly vortex the tube and then do a quick spin (less than 5000xg) to concentrate the liquid at the bottom.
5. Store the suspended plasmid at -20°C. The DNA is stable for at least one year from date of shipping when stored at -20°C.

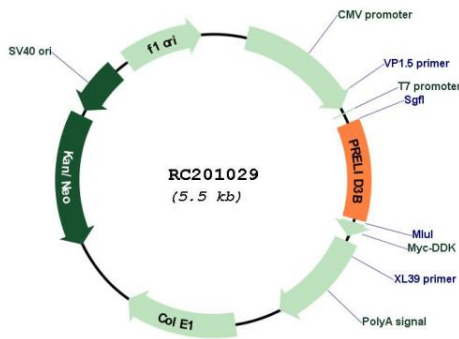
RefSeq: [NM_016045.3](#)

RefSeq Size: 2581 bp

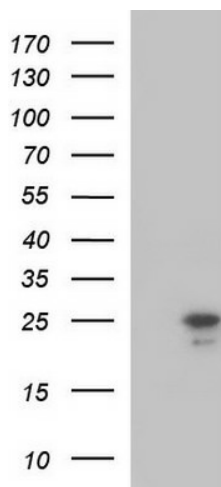
RefSeq ORF: 585 bp

Locus ID: 51012

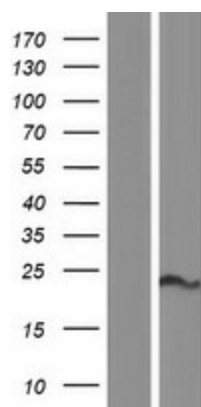
UniProt ID: [Q9Y3B1](#)
 Cytogenetics: 20q13.32
 Domains: MSF1
 MW: 21.5 kDa

Product images:


Circular map for RC201029



HEK293T cells were transfected with the pCMV6-ENTRY control (Cat# [PS100001], Left lane) or pCMV6-ENTRY SLMO2 (Cat# RC201029, Right lane) cDNA for 48 hrs and lysed. Equivalent amounts of cell lysates (5 ug per lane) were separated by SDS-PAGE and immunoblotted with anti-SLMO2(Cat# [TA590513]). Positive lysates [LY414226] (100ug) and [LC414226] (20ug) can be purchased separately from OriGene.



Western blot validation of overexpression lysate (Cat# [LY414226]) using anti-DDK antibody (Cat# [TA50011-100]). Left: Cell lysates from untransfected HEK293T cells; Right: Cell lysates from HEK293T cells transfected with RC201029 using transfection reagent MegaTran 2.0 (Cat# [TT210002]).