

Product datasheet for RC201026

Plasmolipin (PLL) (NM_015993) Human Tagged ORF Clone

Product data:

Product Type:	Expression Plasmids
Product Name:	Plasmolipin (PLL) (NM_015993) Human Tagged ORF Clone
Tag:	Myc-DDK
Symbol:	Plasmolipin
Synonyms:	PMLP; TM4SF11
Mammalian Cell Selection:	Neomycin
Vector:	pCMV6-Entry (PS100001)
E. coli Selection:	Kanamycin (25 ug/mL)
ORF Nucleotide Sequence:	>RC201026 ORF sequence Red=Cloning site Blue=ORF Green=Tags(s)

TTTTGTAATACGACTCACTATAGGGCGCCGGGAATTCGTCGACTGGATCCGGTACCGAGGAGATCTGCC
GCC**CGATCGCC**

ATGGCCGAGTTCCCGTCGAAAGTTAGCACGCGGACCAGCAGTCCTGCGCAGGGCGCCGAAGCCTCGGTGT
CGGCGCTGCGCCCGACCTGGGCTTCGTGCGCTCCCGCTCGGGGCGCTCATGCTGCTGCAGCTGGTGCT
GGGGCTGTGGTGGGCGCTGATTGCGGACACCCGTACCACCTGTATCCGGCCTATGGCTGGGTGATG
TTCGTCGCTGTCTTCTCTGGCTGGTGACAATCGTCCTCTTCAACCTCTACCTGTTTCAGCTGCACATGA
AGTTGTACATGGTCCCTGGCCACTGGTGAATGATCTTTAACATCAGCGCCACCGTTCTTACATCAC
CGCCTTACATCGCCTGCTCTGCGGAGTTGACCTGACATCCCTGAGGGGACCCGGCCTTATAACCAGCGC
GCGGCTGCCTCGTCTTTGCGTGTGGTGGTATGATCGCCTATGGAGTGAGTGCCTTCTTCAGCTACCAGG
CCTGGCGAGGAGTAGGCAGCAATGCGGCCACCAGTCAGATGGCTGGCGGCTATGCC

ACGCGTACGCGGCCGCTCGAGCAGAACTCATCTCAGAAGAGGATCTGGCAGCAAATGATATCCTGGATT
ACAAGGATGACGACGATAAGGTTTAA

Protein Sequence:	>RC201026 protein sequence Red=Cloning site Green=Tags(s)
-------------------	--

MAEFPSKVSTRTSSPAQGAESVSALRPDLGFVRSRLGALMLLQLVLGLLVWAL IADTPYHLYPAYGWVM
FVAVFLWLVTIVLFNL YLFQLHMKLYMVPWPLVLMIFNISATVLYITAFIACSAAVDLTSLRGRTPYNQR
AAASFFACLVMIA YGVSAFFSYQAWRGVGSNAATSQMAGGYA

TRTRPLEQKLISEEDLAANDILDYKDDDDKV

Chromatograms:	https://cdn.origene.com/chromatograms/mk6085_c04.zip
----------------	---



[View online »](#)

Restriction Sites: SgfI-MluI

Cloning Scheme:



ACCN: NM_015993

ORF Size: 546 bp

OTI Disclaimer: The molecular sequence of this clone aligns with the gene accession number as a point of reference only. However, individual transcript sequences of the same gene can differ through naturally occurring variations (e.g. polymorphisms), each with its own valid existence. This clone is substantially in agreement with the reference, but a complete review of all prevailing variants is recommended prior to use. [More info](#)

OTI Annotation: This clone was engineered to express the complete ORF with an expression tag. Expression varies depending on the nature of the gene.

Components: The ORF clone is ion-exchange column purified and shipped in a 2D barcoded Matrix tube containing 10ug of transfection-ready, dried plasmid DNA (reconstitute with 100 ul of water).

Reconstitution Method:

1. Centrifuge at 5,000xg for 5min.
2. Carefully open the tube and add 100ul of sterile water to dissolve the DNA.
3. Close the tube and incubate for 10 minutes at room temperature.
4. Briefly vortex the tube and then do a quick spin (less than 5000xg) to concentrate the liquid at the bottom.
5. Store the suspended plasmid at -20°C. The DNA is stable for at least one year from date of shipping when stored at -20°C.

RefSeq: [NM_015993.3](#)

RefSeq Size: 1514 bp

RefSeq ORF: 549 bp

Locus ID: 51090

UniProt ID: [Q9Y342](#)

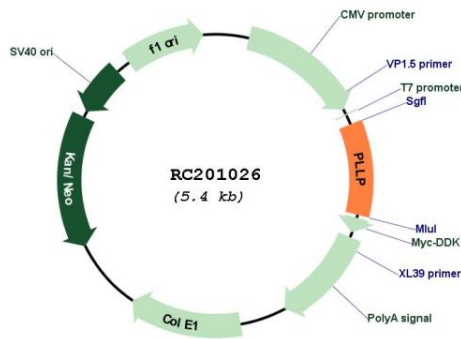
Cytogenetics: 16q13

Protein Families: Ion Channels: Other, Transmembrane

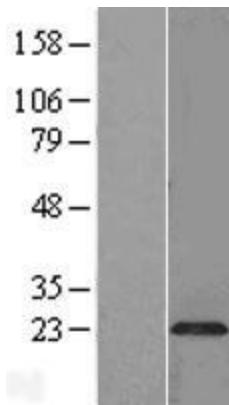
MW: 20 kDa

Gene Summary: Appears to be involved in myelination. Could also participate in ion transport events as addition of plasmolipin to lipid bilayers induces the formation of ion channels, which are voltage-dependent and K(+)-selective (By similarity).[UniProtKB/Swiss-Prot Function]

Product images:



Circular map for RC201026



Western blot validation of overexpression lysate (Cat# [LY414263]) using anti-DDK antibody (Cat# [TA50011-100]). Left: Cell lysates from untransfected HEK293T cells; Right: Cell lysates from HEK293T cells transfected with RC201026 using transfection reagent MegaTran 2.0 (Cat# [TT210002]).