

Product datasheet for **RC201024**

ZNF226 (NM_001032372) Human Tagged ORF Clone

Product data:

Product Type:	Expression Plasmids
Product Name:	ZNF226 (NM_001032372) Human Tagged ORF Clone
Tag:	Myc-DDK
Symbol:	ZNF226
Mammalian Cell Selection:	Neomycin
Vector:	pCMV6-Entry (PS100001)
E. coli Selection:	Kanamycin (25 ug/mL)



[View online »](#)

ORF Nucleotide
Sequence:

>RC201024 ORF sequence
Red=Cloning site Blue=ORF Green=Tags(s)

TTTTGTAATACGACTCACTATAGGGCGGCCGGGAATTCGTGCGACTGGATCCGGTACCGAGGAGATCTGCC
GCC**CGGATCGCC**

ATGAATATGTTCAAGGAAGCAGTGACCTTCAAGGACGTGGCTGTGGCCTTCACGGAGGAGGAATTGGGGC
TGCTGGGCCCTGCCAGAGGAAGCTGTACCGAGATGTGATGGTGGAGAACCTTAGGAACCTGCTGTCACT
GGGGCATCCACCTTCAAAACAAGATGTATCACCTATAGAAAGAAATGAGCAGCTTTGGATAATGACGACA
GCAACCCGAAGACAGGGAATTTAGGAGAGAAAAATCAAAGTAAGTTAATTAAGTGTCAAGACAGAGAAT
CAGAAGAAGAGCTTTCTTGTGGCAAACTGGCAACAAATGCAAAATGACTTAACCGAGGTGTCAAGACTC
CATGATCAATAATTCTCAGTGTCAAAACAAGGTGATTTCCCTTACCAGGTAGGGACAGAAGTGTCTATT
CAAATTTCTGAAGATGAGAACTATATAGTAAATAAAGCAGATGGTCCCAATAACTGGGAATCCAGAGT
TTCTATCTTGAGAACCCAGGATTTCTGGAGGAAAACATTCCTGACTGAGTCACAGAGATTGAACAGAGA
TCAGCAAAATTTCCATAAAAAATAAATTATGTCAATGTAAGAAGGGTGTGATCCCATCGGTTGGATTTC
CATCATGATGGTCATAGAGTACACAAAAGTGAAAAATCTTATAGACCCAATGATTATGAAAAAGACAACA
TGAAGATTTTGACATTTGATCACAAATAGCATGATTCACACAGGACAGAAAATCGTACCAGTGTAAATGAGTG
TAAAAACCCCTTCAGTGTCTCTCCAGCTTTGATCTTTCATCAGCAGTTACAATCAGGAGAGAAGTCTCTT
ACATGTGTTGAGCGTGGAAAAGGCTTCTGTTACAGCCAGTTCCTCTGTTTCATCAGAAAAGTACATGTGG
GAGAAAAACTTAAGTGTGATGAGTGTGGTAAGGAATTCAGTCAGGGCGCTCATCTACAGACCCATCAGAA
AGTCCACGTGATAGAGAAACCATACAAATGTAAGCAATGTGGAAAGGTTTCAGTCGTAGATCAGCACTT
AATGTTCAATGCAAGGTCCACACGGCAGAGAAAACCTTATAATTTGAGGAGTGTGGGAGGGCCTTCAGTC
AGGCCCTCATCTTCAGGACCATCAGAGACTCCACACTGGGGAGAAGCCATTCAAATGTGATGCATGTGG
TAAGAGCTTCAGTCGGAATTCACATCTTCAATCCCATCAAAGAGTTCATACAGGAGAGAAAACCATACAAA
TGTGAGGAGTGTGGTAAGGGCTTCATTTGTAGCTCAAATCTTTACATTCATCAGAGAGTCCACACAGGAG
AAAAACCCATAAATGTGAGGAATGTGGTAAAGGCTTTAGTCGGCCTTCAAGTCTTCAGGCCATCAGGG
AGTTCACACTGGAGAGAAGTACATACATGTACTGTATGTGGAAAGGCTTTACTCTGAGTTCAAATCTT
CAAGCCCATCAGAGAGTCCACACTGGAGAGAAGCCATACAAATGCAATGAGTGTGGGAAGAGCTTCAGGA
GGAATTCCTATTCAAGTTCATCTAGTGGTCCACACAGGAGAGAAAACCCATAAATGTGAGATATGTGG
GAAGGGCTTCAGTCAAAGTTCGATCTTCAAATCCATCAGAAGGCCACAGTATAGAGAAAACCTTTAAG
TGTGAGGAGTGTGGCAGGGTTTCAATCAGAGCTCACGACTTCAGATTCACCAGCTGATCCATACGGGTG
AGAAACCATACAAATGTGAAGAGTGTGGCAAGGGATTTAGTCGTAGAGCAGATCTTAAAAATTCAGTGTAG
GATCCACACAGGAGAGAAAACCATATAATTTGTGAGGAGTGTGGGAAGGCTTCAGGCAGGCCCTCAAATCTT
TTGGCCCATCAGAGAGTCCACAGTGGAGAAAAACCATCAAATGTGAAGAATGTGGGAAGAGTTTCGGTC
GGAGTGCACATCTTCAAGCCATCAAAAAGTCCCACTGGAGATAAGCCATACAAATGTGATGAGTGTGG
GAAGGGCTTCAAGTGGAGCTTGAACCTTGACATGCATCAGAGGGTGCACACAGGAGAAAAACCATATAAA
TGTGGGGAGTGTGGTAAGTACTTCAGTCAGGCCCAAGTCTTCAACTTCATCAGAGTGTCCACACAGGAG
AGAAACCATACAAATGTGATGTGTGTGGTAAAGTCTTTCAGTCGGTCTTCACTACAGTCTCATCAGCC
AGTTCACACTGGGAGAAAACCTTATAAATGTGAGATATGTGGTAAGAGCTTCAGTTGGCGATCAAATCTT
ACAGTTCATCACAGAATCCATGTTGGTGATAAATCCTATAAAAAGTAATAGGGGTGTAAGAACATCAGAG
AATCCACACAGGAAAAAATCTATAAAA

ACGCGTACGCGGCCGCTCGAGCAGAACTCATCTCAGAAGAGGATCTGGCAGCAAATGATATCCTGGATT
ACAAGGATGACGACGATAAGGTTTAA

Protein Sequence: >RC201024 protein sequence
Red=Cloning site Green=Tags(s)

MNMFKEAVTFKDVAVAFTEEELGLLGPAQRKLYRDMVENFRNLLSVGHPFKQDVSPIERNEQLWIMTT
ATRRQGNLGEKNQSKLITVQDRESEEELSCWQIWQIANDLTRCQDSMINNSQCHKQGDFPYQVGTLSI
QISEDENYIVNKADGPNNTGNPEFPILRTQDSWRKTFLTESQRLNRDQQISIKNKLQCKKGVDPIGWIS
HHDGHRVHKSEKSYRPNNDYKDNMKILTFDHNSMIHTGQKSYQCNECKKPFSDLSSFDLHQQLQS
TCVERGKGF CYSPLPVHQKVHVGEKLCDECGKEFSQGAHLQTHQKVHVIEKPYKCKQCGKGF
SRRSALNVHCKVHTAEKPYNCEECGRAFSQASHLQDHQRLHTGEKPFKCDACGKSF SRNSHLQSHQ
RVHTGEKPYKCEEKGFICSSNLYIHQRVHTGEKPYKCEEKGF SRPSSLQAHQGVHTGEKSYICTV
CGKGF TLSSNLQAHQRVHTGEKPYKCEKGF SRFRNSHYQVHLVVHTGEKPYKCEICGKGF
SQSSYLQIHQKAHSIEKPFKCEEKGFQFNQSSRLQIHQLIHTGEKPYKCEEKGF SRRADLKI
HCRIHTGEKPYNCEECGVFRQASNL LAHQRVHSGEKPFKCEEKGFGRSAHLQAHQKVHTGDK
PYKCECGKGFKWSLNLDMHQRVHTGEKPYKCGECKGYFSQASSLQLHQS
VHTGEKPYKCDVCGKVF SRSSQLQSHQRVHTGEKPYKCEICGKSF SWRSNL
TVHHRIVGDKSYKSNRGGKNIRESTQEKKSIK

TRTRPLEQKLISEEDLAANDILDYKDDDDKV

Chromatograms: https://cdn.origene.com/chromatograms/mk6690_h01.zip

Restriction Sites: Sgfl-Mlul

Cloning Scheme:


ACCN: NM_001032372

ORF Size: 2409 bp

OTI Disclaimer: The molecular sequence of this clone aligns with the gene accession number as a point of reference only. However, individual transcript sequences of the same gene can differ through naturally occurring variations (e.g. polymorphisms), each with its own valid existence. This clone is substantially in agreement with the reference, but a complete review of all prevailing variants is recommended prior to use. [More info](#)

OTI Annotation: This clone was engineered to express the complete ORF with an expression tag. Expression varies depending on the nature of the gene.

Components: The ORF clone is ion-exchange column purified and shipped in a 2D barcoded Matrix tube containing 10ug of transfection-ready, dried plasmid DNA (reconstitute with 100 ul of water).

Reconstitution Method:

1. Centrifuge at 5,000xg for 5min.
2. Carefully open the tube and add 100ul of sterile water to dissolve the DNA.
3. Close the tube and incubate for 10 minutes at room temperature.
4. Briefly vortex the tube and then do a quick spin (less than 5000xg) to concentrate the liquid at the bottom.
5. Store the suspended plasmid at -20°C. The DNA is stable for at least one year from date of shipping when stored at -20°C.

RefSeq: [NM_001032372.1](#), [NP_001027544.1](#)

RefSeq Size: 2623 bp

RefSeq ORF: 2412 bp

Locus ID: 7769

UniProt ID: [Q9NYT6](#)

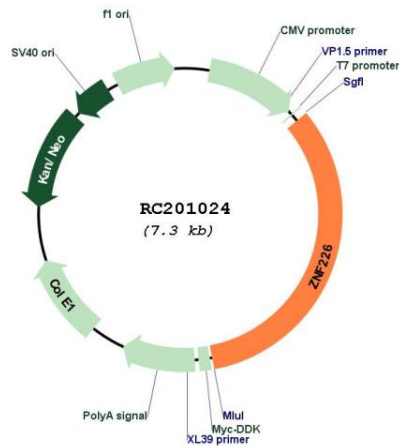
Cytogenetics: 19q13.31

Protein Families: Transcription Factors

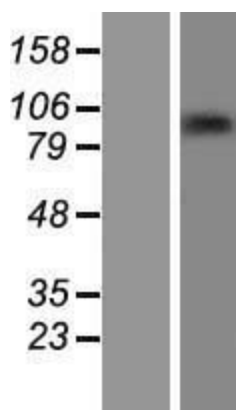
MW: 91.9 kDa

Gene Summary: May be involved in transcriptional regulation.[UniProtKB/Swiss-Prot Function]

Product images:



Circular map for RC201024



Western blot validation of overexpression lysate (Cat# [LY422312]) using anti-DDK antibody (Cat# [TA50011-100]). Left: Cell lysates from untransfected HEK293T cells; Right: Cell lysates from HEK293T cells transfected with [RC223775] using transfection reagent MegaTran 2.0 (Cat# [TT210002]).