

Product datasheet for RC201023

COPZ1 (NM_016057) Human Tagged ORF Clone

Product data:

Product Type: Expression Plasmids
Product Name: COPZ1 (NM_016057) Human Tagged ORF Clone
Tag: Myc-DDK
Symbol: COPZ1
Synonyms: CGI-120; COPZ; HSPC181; zeta-COP; zeta1-COP
Mammalian Cell Selection: Neomycin
Vector: pCMV6-Entry (PS100001)
E. coli Selection: Kanamycin (25 ug/mL)
ORF Nucleotide Sequence: >RC201023 ORF sequence
Red=Cloning site Blue=ORF Green=Tags(s)

TTTTGTAATACGACTCACTATAGGGCGCCGGGAATTCGTCGACTGGATCCGGTACCGAGGAGATCTGCC
GCC**CGATCGCC**

ATGGAGGCGCTGATTTTGGAACTTCCCTGTATACTGTCAAAGCCATCCTGATTCTGGACAATGATGGAG
ATCGACTTTTTGCCAAGTACTATGACGACACCTACCCAGTGTCAAGGAGCAAAGGCCCTTTGAGAAGAA
CATTTTCAACAAGACCCATCGGACTGACAGTCAAATTGCCCTTTGGAAGGCCTGACAGTGGTATACAAA
AGCAGTATAGATCTCTATTTCTATGTGATTGGCAGCTCCTATGAAAATGAGCTGATGCTTATGGCTGTC
TGAAGTGTCTCTCGACTCATTGAGCCAGATGCTGAGGAAAAATGTAGAAAAGCGAGCACTGCTGGAGAA
CATGGAGGGGCTGTTCTTGGCTGTGGATGAAATTGTAGATGGAGGGGTGATCCTAGAGAGTGATCCCCAG
CAGGTGGTACACCGGGTGGCATTAAAGGGTGAAGATGTCCCCCTACGGAGCAGACCGTGTCTCAGGTGC
TGACAGTCAAGCAAGAACAGATCAAGTGGTCACTCCTTCGG

ACGCGTACGCGGCCGCTCGAGCAGAACTCATCTCAGAAGAGGATCTGGCAGCAAATGATATCCTGGATT
ACAAGGATGACGACGATAAGGTTTAA

Protein Sequence: >RC201023 protein sequence
Red=Cloning site Green=Tags(s)
MEALILEPSLYTVKAILILDNDGDRLFAYYYDDTYPSPVKEQKAFEKNIFNKTHRTDSEIALLEGLTVVYK
SSIDLIFYVIGSSYENELMLMAVLNCLFDSLQMLRKNVEKRALLENMEGLFLAVDEIVDGGVILESDPQ
QVVHRVALRGEDVPLTEQTVSQVLQSAKEQIKWSLLR

TRTRPLEQKLISEEDLAANDILDYKDDDDKV

Chromatograms: https://cdn.origene.com/chromatograms/mk6389_g06.zip



Restriction Sites: SgfI-MluI

Cloning Scheme:



ACCN: NM_016057

ORF Size: 531 bp

OTI Disclaimer: The molecular sequence of this clone aligns with the gene accession number as a point of reference only. However, individual transcript sequences of the same gene can differ through naturally occurring variations (e.g. polymorphisms), each with its own valid existence. This clone is substantially in agreement with the reference, but a complete review of all prevailing variants is recommended prior to use. [More info](#)

OTI Annotation: This clone was engineered to express the complete ORF with an expression tag. Expression varies depending on the nature of the gene.

Components: The ORF clone is ion-exchange column purified and shipped in a 2D barcoded Matrix tube containing 10ug of transfection-ready, dried plasmid DNA (reconstitute with 100 ul of water).

Reconstitution Method: 1. Centrifuge at 5,000xg for 5min.
2. Carefully open the tube and add 100ul of sterile water to dissolve the DNA.
3. Close the tube and incubate for 10 minutes at room temperature.
4. Briefly vortex the tube and then do a quick spin (less than 5000xg) to concentrate the liquid at the bottom.
5. Store the suspended plasmid at -20°C. The DNA is stable for at least one year from date of shipping when stored at -20°C.

RefSeq: [NM_016057.3](#)

RefSeq Size: 1954 bp

RefSeq ORF: 534 bp

Locus ID: 22818

UniProt ID: [P61923](#)

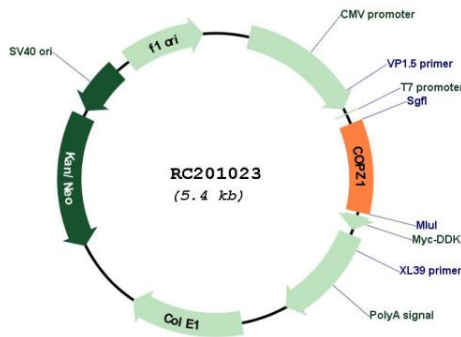
Cytogenetics: 12q13.13

Domains: Clat_adaptor_s

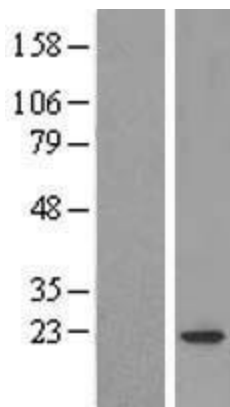
MW: 20.2 kDa

Gene Summary: This gene encodes a subunit of the cytoplasmic coatamer protein complex, which is involved in autophagy and intracellular protein trafficking. The coatamer protein complex is comprised of seven subunits and functions as the coat protein of coat protein complex (COP)I-vesicles. Alternative splicing results in multiple transcript variants. [provided by RefSeq, Nov 2012]

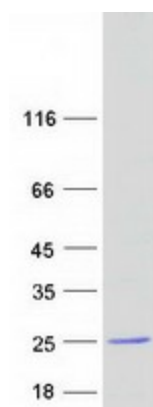
Product images:



Circular map for RC201023



Western blot validation of overexpression lysate (Cat# [LY414222]) using anti-DDK antibody (Cat# [TA50011-100]). Left: Cell lysates from untransfected HEK293T cells; Right: Cell lysates from HEK293T cells transfected with RC201023 using transfection reagent MegaTran 2.0 (Cat# [TT210002]).



Coomassie blue staining of purified COPZ1 protein (Cat# [TP301023]). The protein was produced from HEK293T cells transfected with COPZ1 cDNA clone (Cat# RC201023) using MegaTran 2.0 (Cat# [TT210002]).