

## Product datasheet for RC201022

### NSFL1C (NM\_016143) Human Tagged ORF Clone

#### Product data:

**Product Type:** Expression Plasmids  
**Product Name:** NSFL1C (NM\_016143) Human Tagged ORF Clone  
**Tag:** Myc-DDK  
**Symbol:** NSFL1C  
**Synonyms:** dj776F14.1; P47; UBX1; UBXD10; UBXN2C  
**Mammalian Cell Selection:** Neomycin  
**Vector:** pCMV6-Entry (PS100001)  
**E. coli Selection:** Kanamycin (25 ug/mL)  
**ORF Nucleotide Sequence:** >RC201022 ORF sequence  
 Red=Cloning site Blue=ORF Green=Tags(s)

TTTTGTAATACGACTCACTATAGGGCGGCCGGAATTCGTCGACTGGATCCGGTACCGAGGAGATCTGCC  
 GCC**CGATCGCC**

ATGGCGCGGAGCGACAGGAGGCGCTGAGGGAGTTCGTGGCGGTGACGGGCGCCGAGGAGGACCGGGCCC  
 GCTTCTTTCTCGAGTCGGCCGGCTGGGACTTGCAGATCGCGCTAGCGAGCTTTTATGAGGACGGAGGGGA  
 TGAAGACATTGTGACATTTTCGACGGCAACCCCAAGTTCAGTGTCCAGAGGCACAGCCCCAGTGATAAT  
 AGAGTGACATCCTTCAGAGACCTCATTTCATGACCAAGATGAAGATGAGGAGGAAGAGGAAGGCCAGAGGT  
 TTTATGCTGGGGCTCAGAGAGAAGTGGACAGCAGATTGTTGGCCCTCCAGGAAGAAAAGTCCCAACGA  
 GCTGGTGGATGATCTCTTAAAGGTGCCAAGAGCATGGAGCTGTAGCTGTGGAGCGAGTGACCAAGAGC  
 CCTGGAGAGACCAGTAAACCGAGACCATTTGCAGGAGGTGGCTACCGCCTTGGGGCAGCACCAGAGGAAG  
 AGTCTGCCTATGTGGCAGGAGAAAAGAGGCAGCATTCCAGCCAAGATGTTTCATGTAGTATTGAAACTCTG  
 GAAGAGTGGATTCAGCCTGGATAATGGAGAAGTCCAGCAAGATGTTTCATGTAGTATTGAAACTCTG  
 GAGTCTATCCGCAGAGGGGAGGTGCCAGCAGAGCTTCGGAGGCTAGCTCACGGTGGACAGGTGAACCTGG  
 ATATGGAGGACCATCGGGACGAGGACTTTGTGAAGCCAAAGGAGCCTTCAAAGCCTTACTGGCGAGGG  
 TCAGAAACTGGCAGCACTGCCCCCAGGTGTTGAGTACCAGCTCTCCAGCCAAACAGGCAGAAAATGAA  
 GCCAAAGCCAGCTCTTCCATCTTAATCGACGAATCAGAGCCTACCACAAACATCCAAATTCGGCTTGCAG  
 ACGGCGGGAGGCTGGTGCAGAAAATTAACCACAGCCACAGGATCAGCGACATCCGACTCTTCATCGTGGGA  
 TGCCCGGCCAGCCATGGCTGCCACCAGCTTTATCCTCATGACTACTTTCCGAACAAAGAGCTGGCTGAT  
 GAGAGCCAGACCCTGAAGGAAGCCAACCTGCTCAATGCTGTCATCGTGCAGCGGTTAACA

**ACGCGT**ACGCGGCCGCTCGAGCAGAAAACATCTCAGAAGAGGATCTGGCAGCAATGATATCCTGGATT  
 ACAAGGATGACGACGATAAGGTTTAA



[View online »](#)

**Protein Sequence:** >RC201022 protein sequence  
Red=Cloning site Green=Tags(s)

MAAERQEALREFVAVTGAEEEDRARFFLESAGWDLQIALASFYEDGGDEDIVTISQATPSSVSRGTAPSDN  
 RVTSFRDLIHDQDEDEEEEGQRFYAGGSERSGQIVGPPRKKSPNELVDDLFGAKEHGAVAVERTKS  
 PGETSKPRPFAGGGYRLGAAPEEE SAYVAGEKROHSSQDVHVVLKLVKSGFSLDNGLRSYQDPSNAQFL  
 ESIRRGEVPAELRRLAHGGQVNLDMEDHRDEDFVKPKGAFKFTGEGQKLGSTAPQVLSTSSPAQQAENE  
 AKASSILIDESEPTTNIQIRLADGGRLVQKFNHSHRISDIRLFIVDARPAMAATSFILMTTFPNKELAD  
 ESQTLKEANLLNAVIVQRLT

TRTRPLEQKLISEEDLAANDILDYKDDDDKV

**Chromatograms:** [https://cdn.origene.com/chromatograms/mk6150\\_e08.zip](https://cdn.origene.com/chromatograms/mk6150_e08.zip)

**Restriction Sites:** SgfI-MluI

**Cloning Scheme:**



\* The last codon before the Stop codon of the ORF

**ACCN:** NM\_016143

**ORF Size:** 1110 bp

**OTI Disclaimer:** The molecular sequence of this clone aligns with the gene accession number as a point of reference only. However, individual transcript sequences of the same gene can differ through naturally occurring variations (e.g. polymorphisms), each with its own valid existence. This clone is substantially in agreement with the reference, but a complete review of all prevailing variants is recommended prior to use. [More info](#)

**OTI Annotation:** This clone was engineered to express the complete ORF with an expression tag. Expression varies depending on the nature of the gene.

**Components:** The ORF clone is ion-exchange column purified and shipped in a 2D barcoded Matrix tube containing 10ug of transfection-ready, dried plasmid DNA (reconstitute with 100 ul of water).

**Reconstitution Method:**

1. Centrifuge at 5,000xg for 5min.
2. Carefully open the tube and add 100ul of sterile water to dissolve the DNA.
3. Close the tube and incubate for 10 minutes at room temperature.
4. Briefly vortex the tube and then do a quick spin (less than 5000xg) to concentrate the liquid at the bottom.
5. Store the suspended plasmid at -20°C. The DNA is stable for at least one year from date of shipping when stored at -20°C.

**RefSeq:** [NM\\_016143.4](#)

**RefSeq Size:** 3568 bp

**RefSeq ORF:** 1113 bp

**Locus ID:** 55968

**UniProt ID:** [Q9UNZ2](#)

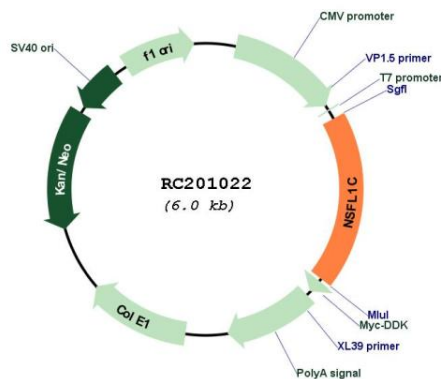
**Cytogenetics:** 20p13

**Domains:** UBX, FAF

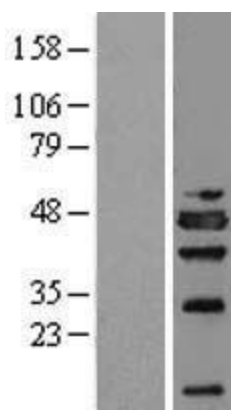
**MW:** 40.6 kDa

**Gene Summary:** N-ethylmaleimide-sensitive factor (NSF) and valosin-containing protein (p97) are two ATPases known to be involved in transport vesicle/target membrane fusion and fusions between membrane compartments. A trimer of the protein encoded by this gene binds a hexamer of cytosolic p97 and is required for p97-mediated regrowth of Golgi cisternae from mitotic Golgi fragments. Alternative splicing results in multiple transcript variants. A related pseudogene has been identified on chromosome 8. [provided by RefSeq, May 2011]

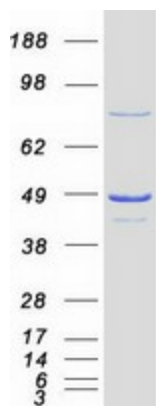
### Product images:



Circular map for RC201022



Western blot validation of overexpression lysate (Cat# [LY402508]) using anti-DDK antibody (Cat# [TA50011-100]). Left: Cell lysates from untransfected HEK293T cells; Right: Cell lysates from HEK293T cells transfected with RC201022 using transfection reagent MegaTran 2.0 (Cat# [TT210002]).



Coomassie blue staining of purified NSFL1C protein (Cat# [TP301022]). The protein was produced from HEK293T cells transfected with NSFL1C cDNA clone (Cat# RC201022) using MegaTran 2.0 (Cat# [TT210002]).