

## Product datasheet for **RC201017**

### **GTL3 (CFAP20) (NM\_013242) Human Tagged ORF Clone**

#### Product data:

Product Type:	Expression Plasmids
Product Name:	GTL3 (CFAP20) (NM_013242) Human Tagged ORF Clone
Tag:	Myc-DDK
Symbol:	GTL3
Synonyms:	BUG22; C16orf80; EVORF; fSAP23; GTL3
Mammalian Cell Selection:	Neomycin
Vector:	pCMV6-Entry (PS100001)
E. coli Selection:	Kanamycin (25 ug/mL)
ORF Nucleotide Sequence:	>RC201017 ORF sequence Red=Cloning site Blue=ORF Green=Tags(s)

TTTTGTAATACGACTCACTATAGGGCGCCGGGAATTCGTCGACTGGATCCGGTACCGAGGAGATCTGCC  
GCC**CGATCGCC**

ATGTTCAAAAACAGTTCAGAGCGGCTTCTCTCCATCCTCTACAGCATCGGCAGCAAGCCTCTGCAA  
TCTGGGACAAAAGGTACGGAATGGCCACATCAAAGAATCACTGATAATGACATCCAGTCCCTGGTGCT  
AGAGATTGAAGGGACAAATGTAAGCACCACATATACACATGCCCTGCAGACCCCAAGAAGCGCTGGGA  
ATTAACCTTCTTCTTGTGTCATGATTATCAAAAACCTGAAGAATTTTACCTCGAAGTGCAGGTAC  
TAGATGACAAGAATGTGCGTCGTCGCTTCGGGCAAGTAACCTACCAGAGCACCACCGGGTCAAACCTT  
CATCTGCACCATGCCCATGCGGCTGGATGACGGCTGGAACAGATTTCAGTTCAACTTGCTAGACTTACA  
CGGCGAGCATACGGCACCAATTACATCGAGACCCTCAGAGTGCAGATCCATGCAAATGTGCGCATCCGAC  
GGGTTTACTTCTCAGACAGACTCTACTCAGAAGATGAGCTGCCGGCAGAGTTCAAAGTGTATCTCCAGT  
TCAGAACAAGGCAAAGCAA

**ACGCGT**ACGCGGCCGCTCGAGCAGAACTCATCTCAGAAGAGGATCTGGCAGCAAATGATATCCTGGATT  
ACAAGGATGACGACGATAAGGTTTAA

Protein Sequence:	>RC201017 protein sequence Red=Cloning site Green=Tags(s)
-------------------	--

MFKNTFQSGFLSILYSIGSKPLQIWDKKVRNGHIKRITDNDIQSLVLEIEGTVNVTYITCPADPKKTLG  
IKLPFLVMIIKNLKKYFTFEVQVLDKKNVRRFRASNYQSTTRVKPFICTMPMLDDGWNQIQFNLLDFT  
RRAYGTNYIETLRVQIHANCRIRRVYFSDRLYSEDELPAEFKLYLPVQNKAKQ

**TRTRPLEQKLISEEDLAANDILDYKDDDDKV**

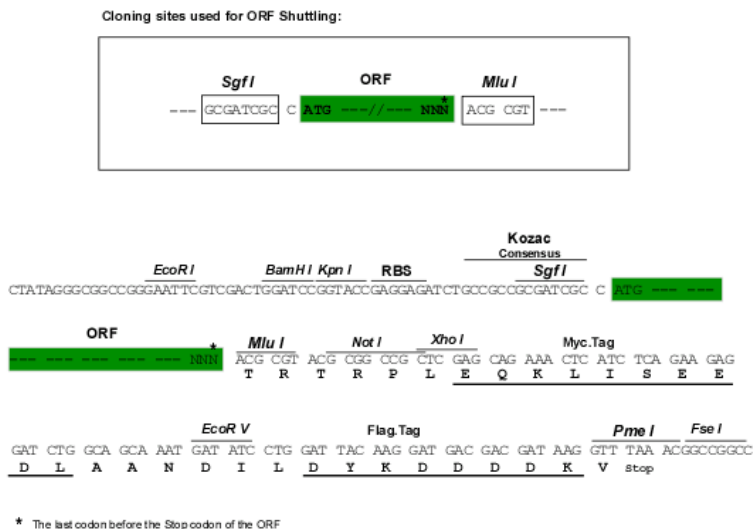


[View online »](#)

**Chromatograms:** [https://cdn.origene.com/chromatograms/mk6721\\_f03.zip](https://cdn.origene.com/chromatograms/mk6721_f03.zip)

**Restriction Sites:** SgfI-MluI

**Cloning Scheme:**



**ACCN:** NM\_013242

**ORF Size:** 579 bp

**OTI Disclaimer:** The molecular sequence of this clone aligns with the gene accession number as a point of reference only. However, individual transcript sequences of the same gene can differ through naturally occurring variations (e.g. polymorphisms), each with its own valid existence. This clone is substantially in agreement with the reference, but a complete review of all prevailing variants is recommended prior to use. [More info](#)

**OTI Annotation:** This clone was engineered to express the complete ORF with an expression tag. Expression varies depending on the nature of the gene.

**Components:** The ORF clone is ion-exchange column purified and shipped in a 2D barcoded Matrix tube containing 10ug of transfection-ready, dried plasmid DNA (reconstitute with 100 ul of water).

**Reconstitution Method:**

1. Centrifuge at 5,000xg for 5min.
2. Carefully open the tube and add 100ul of sterile water to dissolve the DNA.
3. Close the tube and incubate for 10 minutes at room temperature.
4. Briefly vortex the tube and then do a quick spin (less than 5000xg) to concentrate the liquid at the bottom.
5. Store the suspended plasmid at -20°C. The DNA is stable for at least one year from date of shipping when stored at -20°C.

**RefSeq:** [NM\\_013242.3](#)

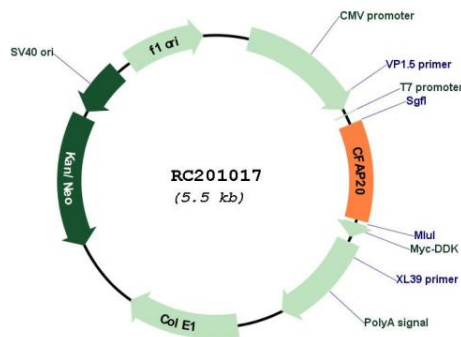
**RefSeq Size:** 1308 bp

**RefSeq ORF:** 582 bp

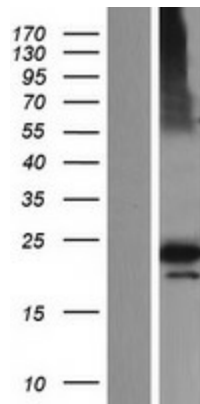
**Locus ID:** 29105

**UniProt ID:** [Q9Y6A4](#)  
**Cytogenetics:** 16q21  
**Domains:** DUF667  
**Protein Families:** Transcription Factors  
**MW:** 22.8 kDa  
**Gene Summary:** Cilium- and flagellum-specific protein that plays a role in axonemal structure organization and motility. Involved in the regulation of the size and morphology of cilia (PubMed:24414207). Required for axonemal microtubules polyglutamylation (PubMed:24414207).[UniProtKB/Swiss-Prot Function]

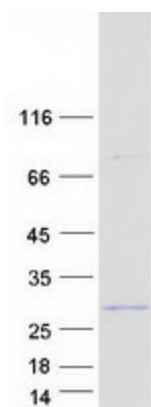
### Product images:



Circular map for RC201017



Western blot validation of overexpression lysate (Cat# [LY415720]) using anti-DDK antibody (Cat# [TA50011-100]). Left: Cell lysates from untransfected HEK293T cells; Right: Cell lysates from HEK293T cells transfected with RC201017 using transfection reagent MegaTran 2.0 (Cat# [TT210002]).



Coomassie blue staining of purified CFAP20 protein (Cat# [TP301017]). The protein was produced from HEK293T cells transfected with CFAP20 cDNA clone (Cat# RC201017) using MegaTran 2.0 (Cat# [TT210002]).