

Product datasheet for RC201016

Syntaxin 18 (STX18) (NM_016930) Human Tagged ORF Clone

Product data:

Product Type:	Expression Plasmids
Product Name:	Syntaxin 18 (STX18) (NM_016930) Human Tagged ORF Clone
Tag:	Myc-DDK
Symbol:	Syntaxin 18
Synonyms:	Ufe1
Mammalian Cell Selection:	Neomycin
Vector:	pCMV6-Entry (PS100001)
E. coli Selection:	Kanamycin (25 ug/mL)
ORF Nucleotide Sequence:	>RC201016 ORF sequence Red=Cloning site Blue=ORF Green=Tags(s)

TTTTGTAATACGACTCACTATAGGGCGGCCGGAATTCGTCGACTGGATCCGGTACCGAGGAGATCTGCC
GCC**CGATCGCC**

ATGGCGGTGGACATCACGCTGCTATTCGGGCCAGCGTCAAGACCGTGAAGACGCGGAACAAGGCGCTGG
GAGTGGCGGTGGCGGGGGTTCGATGGCAGCCGGGACGAGCTGTTCCGCCGAGCCCCGGCCCAAGGG
CGACTTCTCCAGCCGGGCCCGCAAGTATTTCTCACATTGGCAAAGTGAAGATTTTCTTCTGGAACAC
AGGAAAGATTATTAATGCTTATAGCCATACCATGTCTGAATATGGGAGGATGACAGACACAGAACGAG
ACCAGATAGACCAGGATGCCAGATATTCATGAGGACCTGTTTCCAGCAATTCAGCAACTACGAACAGA
AGCTCACAAAGGAGATACATTCAGCAAGTGAAGGAGCACAGGACCGCTGTTTTGGATTTTATTGAAGAT
TACTTGAAAAGAGTATGTAACTTTACTCAGAACAGAGGCCATCCGAGTTAAAAGAGTGGTGGATAAGA
AAAGATTATCTAAGTTGGAACGAAACCAATACAAAAGACAAGAGAATCCACATCTTCTGAGAAAGTTTC
ACAGAGTCCTTCAAAAGACTCTGAAGAAAACCTGCCACTGAAGAACGTCCAGAAAAATTTTGGCTGAA
ACACAACCTGAATTGGGAACGTGGGGAGATGGCAAAGGCGAAGATGAGTTATCCCAGAAGAAAATACAAA
TGTTTGAACAGGAAAATCAGCGACTAATTGGTGAATGAACAGCTGTTTGTGATGAAGTGAAGCAATCGA
AGGGAGAGTGGTTGAGATTTCCAGACTCCAAGAGATATTCACGGAAAAGGTTTTGCAACAGGAAGCTGAG
ATTGACAGCATTACCAGTTAGTTGTGGGGCAACTGAAAATATCAAGGAAGGCAACGAAGACATAAGAG
AGGCCATTA AAAACAACGCTGGCTTCCGGGTGTGGATCCTCTTCTCCTCGTGATGTCTCTTCTCCTT
GCTCTTCTCGACTGGTACGACGC

ACGCGTACGCGGCCGCTCGAGCAGAACTCATCTCAGAAGAGGATCTGGCAGCAATGATATCCTGGATT
ACAAGGATGACGACGATAAGGTTTAA



[View online »](#)

Protein Sequence: >RC201016 protein sequence
Red=Cloning site Green=Tags(s)

MAVDITLLFRASVKTVKTRNKALGVAVGGGVDGSRDELFRSPRPKGFSSRAREVISHIGKLRDFLLEH
 RKDYINAYSHTMSEYGRMTDTERDQIDQDAQIFMRTCSEAIQQLRTEAHKEIHSQQVKEHRTAVLDFIED
 YLKRVCKLYSEQRAIRVKRVVDKKRLSKLEPEPNTKTRESTSSEKVSQSPSKDSEENPATEERPEKILAE
 TQPELGTWGDGKGEDELSPEEIQMFEQENQRLIGEMNSLFDEVQRQIEGRVVEISRLQEIFTEKVLQQEAE
 IDSIHQLVVGATENIKEGNEDIREAIAKNNAGFRVWILFFLVMCSFLLFLDWYDS

TRTRPLEQKLISEEDLAANDILDYKDDDDKV

Chromatograms: https://cdn.origene.com/chromatograms/mk6419_g09.zip

Restriction Sites: SgfI-MluI

Cloning Scheme:



ACCN: NM_016930

ORF Size: 1005 bp

OTI Disclaimer: The molecular sequence of this clone aligns with the gene accession number as a point of reference only. However, individual transcript sequences of the same gene can differ through naturally occurring variations (e.g. polymorphisms), each with its own valid existence. This clone is substantially in agreement with the reference, but a complete review of all prevailing variants is recommended prior to use. [More info](#)

OTI Annotation: This clone was engineered to express the complete ORF with an expression tag. Expression varies depending on the nature of the gene.

Components: The ORF clone is ion-exchange column purified and shipped in a 2D barcoded Matrix tube containing 10ug of transfection-ready, dried plasmid DNA (reconstitute with 100 ul of water).

Reconstitution Method:

1. Centrifuge at 5,000xg for 5min.
2. Carefully open the tube and add 100ul of sterile water to dissolve the DNA.
3. Close the tube and incubate for 10 minutes at room temperature.
4. Briefly vortex the tube and then do a quick spin (less than 5000xg) to concentrate the liquid at the bottom.
5. Store the suspended plasmid at -20°C. The DNA is stable for at least one year from date of shipping when stored at -20°C.

RefSeq: [NM_016930.4](#)

RefSeq Size: 2162 bp

RefSeq ORF: 1008 bp

Locus ID: 53407

UniProt ID: [Q9P2W9](#)

Cytogenetics: 4p16.3-p16.2

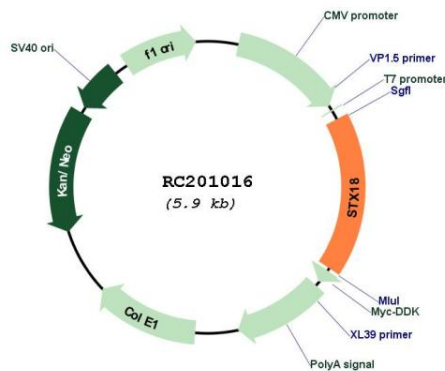
Protein Families: Transmembrane

Protein Pathways: SNARE interactions in vesicular transport

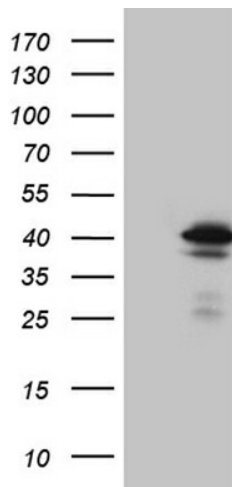
MW: 38.7 kDa

Gene Summary: This gene encodes a member of the syntaxin family of soluble N-ethylmaleimide-sensitive factor attachment protein receptors (SNAREs) which is part of a membrane tethering complex that includes other SNAREs and several peripheral membrane proteins, and is involved in vesicular transport between the endoplasmic reticulum (ER) and the Golgi complex. The encoded protein is important for the organization of the smooth, rough, and exit site ER subdomains. A pseudogene of this gene has been identified. Alternative splicing results in multiple transcript variants. [provided by RefSeq, Oct 2016]

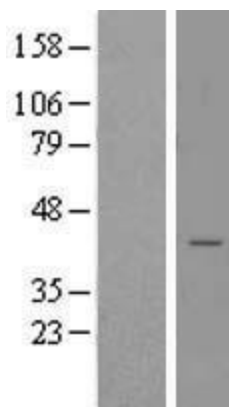
Product images:



Circular map for RC201016



HEK293T cells were transfected with the pCMV6-ENTRY control (Cat# [PS100001], Left lane) or pCMV6-ENTRY STX18 (Cat# RC201016, Right lane) cDNA for 48 hrs and lysed. Equivalent amounts of cell lysates (5 ug per lane) were separated by SDS-PAGE and immunoblotted with anti-STX18 (Cat# [TA809386])(1:2000). Positive lysates [LY413750] (100ug) and [LC413750] (20ug) can be purchased separately from OriGene.



Western blot validation of overexpression lysate (Cat# [LY413750]) using anti-DDK antibody (Cat# [TA50011-100]). Left: Cell lysates from untransfected HEK293T cells; Right: Cell lysates from HEK293T cells transfected with RC201016 using transfection reagent MegaTran 2.0 (Cat# [TT210002]).