

Product datasheet for **RC201015**

RBMS1 (NM_002897) Human Tagged ORF Clone

Product data:

Product Type:	Expression Plasmids
Product Name:	RBMS1 (NM_002897) Human Tagged ORF Clone
Tag:	Myc-DDK
Symbol:	RBMS1
Synonyms:	C2orf12; HCC-4; MSSP; MSSP-1; MSSP-2; MSSP-3; SCR2; YC1
Mammalian Cell Selection:	Neomycin
Vector:	pCMV6-Entry (PS100001)
E. coli Selection:	Kanamycin (25 ug/mL)
ORF Nucleotide Sequence:	>RC201015 ORF sequence Red=Cloning site Blue=ORF Green=Tags(s)

TTTTGTAATACGACTCACTATAGGGCGGCCGGAATTCGTCGACTGGATCCGGTACCGAGGAGATCTGCC
GCC**CGATCGCC**

ATGGGCAAAGTGTGGAACAGCAGATGTACCCTCAGTACGCCACCTACTATTACCCCAAGTATCTGCAAG
CCAAGCAGTCTCTGGTCCCAGCCACCCCATGGCCCTCCAGTCCCAGCACCACCAGCAGTAATAACAA
CAGTAGCAGCAGTAGCAACTCAGGATGGGATCAGCTCAGCAAACGAACCTCTATATCCGAGGACTGCCT
CCCCACACCACCGACCAGGACCTGGTGAAGCTCTGTCAACCATATGGGAAAATAGTCTCCACAAAGGCAA
TTTTGGATAAGACAACAAACAAATGCAAAGTTATGGTTTTGTCGACTTTGACAGCCCTGCAGCAGCTCA
AAAAGCTGTGTGCCCTGAAGGCCAGTGGGGTTCAAGCTCAAATGGCAAAGCAACAGGAACAAGATCCT
ACCAACCTCTACATTTCTAATTTGCCACTCTCCATGGATGAGCAAGAACTAGAAAATATGCTCAAACCAT
TTGGACAAGTTATTTCTACAAGGATACTACGTGATTCCAGTGGTACAAGTCGTGGTGTGGCTTTGCTAG
GATGGAATCAACAGAAAAATGTGAAGCTGTTATTGGTCATTTTAAATGGAAAAATTAAGACACCACCA
GGAGTTTCTGCCCCACAGAACCTTTATTGTGTAAGTTTGTCTGATGGAGGACAGAAAAAGAGACAGAACC
CAAACAAATACATCCCTAATGGAAGACCATGGCATAGAGAAGGAGAGGCTGGAATGACACTTACTTACGA
CCCAACTACAGCTGCTATACAGAACGGATTTTATCCTTCACCATACAGTATTGCTACAAACCGAATGATC
ACTCAAACCTTCTATTACACCCTATATTGCATCTCCTGTATCTGCCTACCAGGTGCAAAGTCTTCGTGGA
TGCAACCTCAACCATATATTCTACAGCACCCCTGGTGCCGTGTTAACTCCCTCAATGGAGCACACCATGTG
ACTACAGCCCGCATCAATGATCAGCCCTCTGGCCAGCAGATGAGTCATCTGTCACTAGGACAGCACC
ACATACATGCCTGCAACGTCAGCTATGCAAGGAGCCTACTTGCCACAGTATGCACATATGCAGACGACAG
CGGTTCTGTTGAGGAGGCAAGTGGTCAACAGCAGGTGGCTGTCGAGACGTCTAATGACCATTCTCCATA
TACCTTTCAACCTAATAAG

ACGCGTACGCGGCCGCTCGAGCAGAACTCATCTCAGAAGAGGATCTGGCAGCAAATGATATCCTGGATT
ACAAGGATGACGACGATAAGGTTTAA



[View online >](#)

Protein Sequence: >RC201015 protein sequence
Red=Cloning site Green=Tags(s)

MGKVVWQQMYPQYATYYYQYLQAKQSLVPAHPMAPPSPSTTSSNNSSSSSSNSGWDQLSKTNLYIRGLP
 PHTTDQDLVKLCQPYGKIVSTKAILDKTTNKCKGYGFVDFDSPAQAQKAVSALKASGVQAQMAKQQEQDP
 TNLYISNLPLSMDEQELENMLKPFQVISTRILRDSSGTSRQVGFARMESTEKCEAVIGHFNGKF IKTPP
 GVSAPTEPLLCKFADGGQKKRQNPKNYIPNGRPWHREGEAGMTLTYDPTTAAIQNGFYSPYSIATNRMI
 TQTSITPYIASPVSAAYQVQSPSWMPQPYILQHPGAVLTPSMEHTMSLQASMISPLAQQMSHLSLSTG
 TYMPATSAMQGAYLPQYAHMQTTAVPVEEASGQQQVAVETSNDHSPYTFQPNK

TRTRPLEQKLISEEDLAANDILDYKDDDDKV

Chromatograms: https://cdn.origene.com/chromatograms/mk6436_b05.zip

Restriction Sites: SgfI-MluI

Cloning Scheme:



* The last codon before the Stop codon of the ORF

ACCN: NM_002897

ORF Size: 1209 bp

OTI Disclaimer: The molecular sequence of this clone aligns with the gene accession number as a point of reference only. However, individual transcript sequences of the same gene can differ through naturally occurring variations (e.g. polymorphisms), each with its own valid existence. This clone is substantially in agreement with the reference, but a complete review of all prevailing variants is recommended prior to use. [More info](#)

OTI Annotation: This clone was engineered to express the complete ORF with an expression tag. Expression varies depending on the nature of the gene.

Components: The ORF clone is ion-exchange column purified and shipped in a 2D barcoded Matrix tube containing 10ug of transfection-ready, dried plasmid DNA (reconstitute with 100 ul of water).

Reconstitution Method:

1. Centrifuge at 5,000xg for 5min.
2. Carefully open the tube and add 100ul of sterile water to dissolve the DNA.
3. Close the tube and incubate for 10 minutes at room temperature.
4. Briefly vortex the tube and then do a quick spin (less than 5000xg) to concentrate the liquid at the bottom.
5. Store the suspended plasmid at -20°C. The DNA is stable for at least one year from date of shipping when stored at -20°C.

RefSeq: [NM_002897.5](#)

RefSeq Size: 4296 bp

RefSeq ORF: 1212 bp

Locus ID: 5937

UniProt ID: [P29558](#)

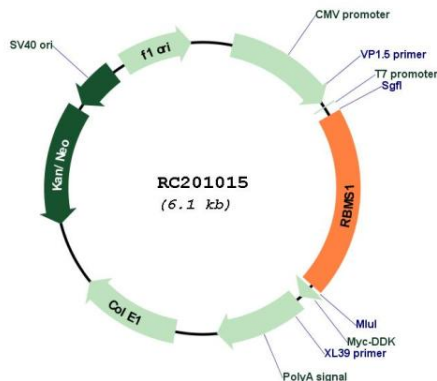
Cytogenetics: 2q24.2

Domains: RRM

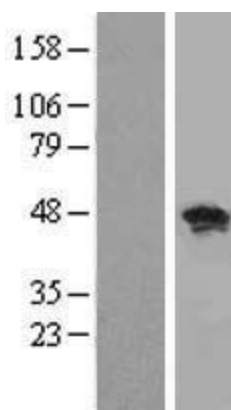
MW: 44.1 kDa

Gene Summary: This gene encodes a member of a small family of proteins which bind single stranded DNA/RNA. These proteins are characterized by the presence of two sets of ribonucleoprotein consensus sequence (RNP-CS) that contain conserved motifs, RNP1 and RNP2, originally described in RNA binding proteins, and required for DNA binding. These proteins have been implicated in such diverse functions as DNA replication, gene transcription, cell cycle progression and apoptosis. Several transcript variants, resulting from alternative splicing and encoding different isoforms, have been described. A pseudogene for this locus is found on chromosome 12. [provided by RefSeq, Feb 2009]

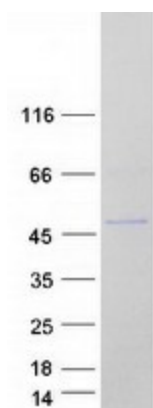
Product images:



Circular map for RC201015



Western blot validation of overexpression lysate (Cat# [LY419042]) using anti-DDK antibody (Cat# [TA50011-100]). Left: Cell lysates from untransfected HEK293T cells; Right: Cell lysates from HEK293T cells transfected with RC201015 using transfection reagent MegaTran 2.0 (Cat# [TT210002]).



Coomassie blue staining of purified RBMS1 protein (Cat# [TP301015]). The protein was produced from HEK293T cells transfected with RBMS1 cDNA clone (Cat# RC201015) using MegaTran 2.0 (Cat# [TT210002]).