

Product datasheet for **RC201008**

WDR18 (NM_024100) Human Tagged ORF Clone

Product data:

Product Type:	Expression Plasmids
Product Name:	WDR18 (NM_024100) Human Tagged ORF Clone
Tag:	Myc-DDK
Symbol:	WDR18
Synonyms:	Ipi3; R32184_1
Mammalian Cell Selection:	Neomycin
Vector:	pCMV6-Entry (PS100001)
E. coli Selection:	Kanamycin (25 ug/mL)



[View online »](#)

ORF Nucleotide Sequence:

>RC201008 ORF sequence
 Red=Cloning site Blue=ORF Green=Tags(s)

TTTTGTAATACGACTCACTATAGGGCGGCCGGGAATTCGTCGACTGGATCCGGTACCGAGGAGATCTGCC
 GCC**CGCATCGCC**

ATGGCGGCGCCCATGGAGGTGGCCGTGTGTACGGACTCGGCGGCCCGATGTGGAGCTGCATCGTGTGGG
 AACTTCACTCGGGCGCCAACCTGCTCACCTACCGCGCGGCCAGGCGGGACCCCGCGCCTGGCGCTGCT
 CAATGGCGAGTATCTGCTGGCGGCGCAGCTGGGCAAGAACTACATCAGCGCCTGGGAGCTGCAGCGGAAG
 GACCAGCTCCAGCAGAAGATCATGTGCCCGGGCTGTCACTGTCTGACTGCATCACCAATGGTCTCT
 ACGTCTGGCAGGAGTTGCAGAAAGCATCCACCTGTGGGAGGTCTCCACCGGGAACCTTCTGGTCATCT
 GAGTCGACACTACCAGGACGTCTCTGCCTTCAGTTCACAGGGGACAGCAGCCACTTCATCTCAGGGGGC
 AAGGACTGCCTGGTGTGGTTGGAGCCTCTGCAGCGTGTGCAGGCCGACCCCTCCAGGATTCGGGCGC
 CCAGGCAGCTCTGGTCTCACCACAGCTCCCATCACGGACCTGCACTGCGGCTTTGGGGCCCCCTGGC
 CCGGGTGGCCACCTCCTCACTGGACCAGACGGTGAAGCTATGGGAGGTCTCTCGGGGGAGCTGCTGCTC
 TCCGTCCTCTTTGACGTGTCATCATGGCAGTGACCATGGACCTGGCTGAGCACCATATGTTCTGCGGGG
 GCAGTGAGGGCTCCATCTTCCAGGTCGACCTTTCACCTGGCCCGGACAGAGGGAGAGGAGCTTCCACCC
 AGAGCAGGACGCCGGGAAGGTCTTCAAAGGGCACAGGAACCAGGTGACTTGCCTGTCACTGTCCACTGAC
 GGCAGCGTGTGCTCTCAGGCTCCCACGACGAGACCGTGCCTCTGGGACGTGCAGAGCAAGCAGTGCA
 TCCGGACGGTGGCCCTCAAAGGCCAGTCACCAATGCCGCCATCTGTGGCGCCGTGAGCATGCTGAG
 CTCAGACTTCAGGCCAGCTGCCGTGCCCACTTCAACAAGCACCTGCTGGGCGCCGAGCAGGGGAC
 GAGCCGCGCCACGGGGCCTCACTCTGCCTGGCCCTCACACAGCAGGGCTCGGAGCCAGCTACCTGG
 ACCGCACGGAGCAGCTGCAGGCCGCTCTGTGCAGCACCATGGAGAAGAGCGTGTCTCGGCGCCAGGACCA
 ACTGCGCGTCCGTGTGACGGAGCTGGAGGACGAGGTGCGCAACCTGCGCAAGATCAATCGGGACCTGTT
 GACTTCTCCACGCGCTTCATCACGCGGCCGCAAG

ACGCGTACGCGGCCGCTCGAGCAGAACTCATCTCAGAAGAGGATCTGGCAGCAATGATATCTGGATT
 ACAAGGATGACGACGATAAGGTTTAA

Protein Sequence:

>RC201008 protein sequence
 Red=Cloning site Green=Tags(s)

MAAPMEVAVCTDSAAPMWSCIVWELHSGANLLTYRGGQAGPRGLALLNGEYLLAAQLGKNYISAWELQRK
 DQLQQKIMCPGPVTCLTASPNGLYVLAVAESIHLWEVSTGNLLVILSRHYQDVSLQFTGDSSHFISGG
 KDCLVLVWSLCSVLQADPSRIPAPRHVSHHTLPITDLHCGFGGPLARVATSSLDQTVKLWEVSSGELL
 SVLFDVSI MAVTMDLAEHHMFCGGSEGSIFQVDLFTWPGQRERSFHPEQDAGKVFKGHRNQVTCLSVST
 GSVLLSGSHDET VRLWDVQSKQCIRTVALKGPVTNAAIILLAPVSMLSSDFRPSLPLPHFNKHLGAEHGD
 EPRHGGLTLRLGLHQGSEPSYLDREQLQAVLCSTMEKSVLGGQDQLRVRVTELEDEVRNLRKINRDLF
 DFSTRFITRPAK

TRTRPLEQKLISEEDLAANDILDYKDDDDKV

Chromatograms:

https://cdn.origene.com/chromatograms/mk6557_d06.zip

Restriction Sites:

SgfI-MluI

Cloning Scheme:

ACCN: NM_024100

ORF Size: 1296 bp

OTI Disclaimer: Due to the inherent nature of this plasmid, standard methods to replicate additional amounts of DNA in E. coli are highly likely to result in mutations and/or rearrangements. Therefore, OriGene does not guarantee the capability to replicate this plasmid DNA. Additional amounts of DNA can be purchased from OriGene with batch-specific, full-sequence verification at a reduced cost. Please contact our customer care team at custsupport@origene.com or by calling 301.340.3188 option 3 for pricing and delivery.

The molecular sequence of this clone aligns with the gene accession number as a point of reference only. However, individual transcript sequences of the same gene can differ through naturally occurring variations (e.g. polymorphisms), each with its own valid existence. This clone is substantially in agreement with the reference, but a complete review of all prevailing variants is recommended prior to use. [More info](#)

OTI Annotation: This clone was engineered to express the complete ORF with an expression tag. Expression varies depending on the nature of the gene.

Components: The ORF clone is ion-exchange column purified and shipped in a 2D barcoded Matrix tube containing 10ug of transfection-ready, dried plasmid DNA (reconstitute with 100 ul of water).

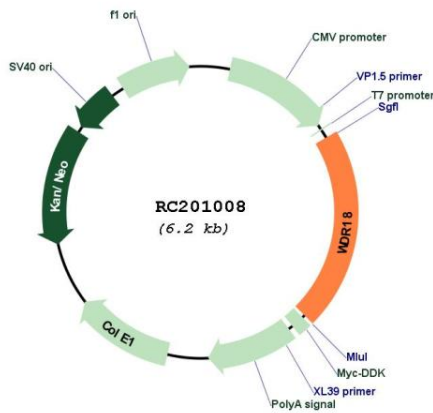
- Reconstitution Method:**
1. Centrifuge at 5,000xg for 5min.
 2. Carefully open the tube and add 100ul of sterile water to dissolve the DNA.
 3. Close the tube and incubate for 10 minutes at room temperature.
 4. Briefly vortex the tube and then do a quick spin (less than 5000xg) to concentrate the liquid at the bottom.
 5. Store the suspended plasmid at -20°C. The DNA is stable for at least one year from date of shipping when stored at -20°C.

RefSeq: [NM_024100.4](#)

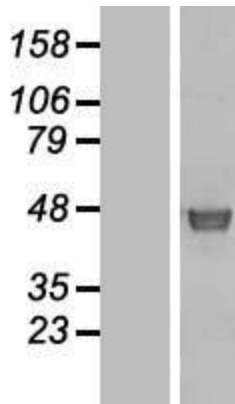
RefSeq Size: 1551 bp
 RefSeq ORF: 1299 bp
 Locus ID: 57418
 UniProt ID: [Q9BV38](#)
 Cytogenetics: 19p13.3
 MW: 47.4 kDa

Gene Summary: This gene encodes a member of the WD repeat protein family. WD repeats are minimally conserved regions of approximately 40 amino acids typically bracketed by gly-his and trp-aspartate (GH-WD), which may facilitate formation of heterotrimeric or multiprotein complexes. Members of this family are involved in a variety of cellular processes, including cell cycle progression, signal transduction, apoptosis, and gene regulation. [provided by RefSeq, Jul 2008]

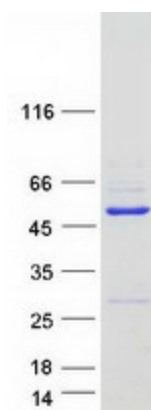
Product images:



Circular map for RC201008



Western blot validation of overexpression lysate (Cat# [LY411371]) using anti-DDK antibody (Cat# [TA50011-100]). Left: Cell lysates from untransfected HEK293T cells; Right: Cell lysates from HEK293T cells transfected with RC201008 using transfection reagent MegaTran 2.0 (Cat# [TT210002]).



Coomassie blue staining of purified WDR18 protein (Cat# [TP301008]). The protein was produced from HEK293T cells transfected with WDR18 cDNA clone (Cat# RC201008) using MegaTran 2.0 (Cat# [TT210002]).