

Product datasheet for **RC201006**

ZNF350 (NM_021632) Human Tagged ORF Clone

Product data:

Product Type:	Expression Plasmids
Product Name:	ZNF350 (NM_021632) Human Tagged ORF Clone
Tag:	Myc-DDK
Symbol:	ZNF350
Synonyms:	ZBRK1; ZFQR
Mammalian Cell Selection:	Neomycin
Vector:	pCMV6-Entry (PS100001)
E. coli Selection:	Kanamycin (25 ug/mL)



[View online »](#)

ORF Nucleotide Sequence:

>RC201006 ORF sequence
 Red=Cloning site Blue=ORF Green=Tags(s)

TTTTGTAATACGACTCACTATAGGGCGGCCGGAATTCGTCGACTGGATCCGGTACCGAGGAGATCTGCC
 GCC**CGCATCGCC**

ATGATCCAGGCCAGGAATCCATAACACTGGAGGATGTGGCTGTGGACTTCACTTGGGAGGAGTGGCAAC
 TCCTGGGCGCTGCTCAGAAGGACCTGTACCGGGACGTGATGTTGGAGAACTACAGCAACCTGGTGGCAGT
 GGGGTATCAAGCCAGCAAACCGGATGCACTCTTCAAGTTGGAACAAGGAGAACAACCTGTGGACAATTGAA
 GATGGAATCCACAGTGGAGCCTGTTTCAGACATATGAAAGTTGATCATGTGCTGGAGCGCTTCAGAGTG
 AAAGCCTGGTGAACAGAAGGAAACCATGTCATGAACATGATGCATTTGAAAAATTTGTTTCATTGCAGCAA
 AAGTCAGTTTCTGTTAGGGCAAATCATGATATATTTGACTTACGTGGAAAAAGTTTGAATCCAATTTA
 ACTTTAGTTAACAGAGCAAAGGCTATGAAATAAAGAACTCTGTTGAGTTTACTGGAAATGGGGACTCCT
 TTCTTCATGCTAACCATGAACGACTTCATACTGCAATTAATTCCTGCAAGTCAAAAACTCATCAGCAC
 TAAGTCCCAATTCATCAGTCCCAAGCATCAGAAAAACGAAAATTAGAGAAGCATCATGTGTGCAGTGAA
 TGTGGGAAAGCCTTCATCAAGAAGTCTTGGCTAACTGATCACCAGGTAATGCATACAGGAGAGAAACCCC
 ACAGATGTAGTCTATGTGAGAAAGCCTTCTCCAGAAAGTTCATGCTTACTGAACATCAGCGAACTCATA
 AGGAGAAAAACCTTATGAATGCCCTGAATGTGGCAAAGCCTTTCTCAAGAAATCACGGCTCAACATACAT
 CAGAAAAACATACCGGAGAGAAACCTATATATGCAGTGAATGTGGAAAAGGCTTCATCCAGAAAGGAA
 ATCTCATTGTACACCAGCGAATTCATACAGGTGAGAAACCTTATATATGCAATGAATGTGGAAAAGGCTT
 CATTGAGAAGACGTGTCTCATAGCACATCAGAGATTTACACAGGAAAGACGCCCTTTGTGTGCAGTGAA
 TGTGGAAAATCCTGTTCTCAGAAATCAGGTCTCATTAAACATCAAAGAATTCACACAGGAGAGAAACCTT
 TTGAATGTAGTGAATGTGGGAAAGCCTTAGCACAAAAGCAAAGCTCATTGTCCATCAAAGGACTCATA
 CAGGAGAGAGACCCCTATGGCTGTAAACGAGTGTGGGAAAGCCTTGGGTATATGTCGTGTCTGGTTAAGCAT
 AAGAGAATACACACAAGGAGAGAAACAAGAGGCAGCCAAGGTGGAAAATCCTCCTGAGAGAGGCACAGCT
 CATTACACACCAGTGATGTGCAGGAGAAAACTCTGCTAACGGGGCGACTACACAAGTGCCTTCTGT
 GGCCCTCAGACATCATTAAACATCAGCGGCCTCCTCGAAACAGGAACGTAGTCCTTGTGGGACAGCCA
 GTGGTCAGATGTGCAGCCTCAGGAGATAACAGAGGATTTGCACAGGACAGAAACCTTGTGAATGCAGTGA
 ATGTGGTGTGCCTTCCGTGATCAATTATGTCTTATTTTATGTTACAGAAAAACCA

ACGCGTACGCGGCCGCTCGAGCAGAAACTCATCTCAGAAGAGGATCTGGCAGCAAATGATATCCTGGATT
 ACAAGGATGACGACGATAAGGTTTAA

Protein Sequence:

>RC201006 protein sequence
 Red=Cloning site Green=Tags(s)

MIQAQESITLEDVAVDFTWEEWQLLGAQKDLYRDVMLENYSNLVAVGYQASKPDALFKLEQGEQLWTIE
 DGIHSGACSDIWKVDHVLRLQSESLVNRKPCHEHDAFENIVHCSKSQFLLGQNHDFDLRGKSLKSNL
 TLVNQSKGYEIKNSVEFTGNGDSFLHANHERLHTAIKFPASQKLISTKSQFISPKHQKTRKLEKHHVCS
 CGKAFIKKSWLTDHQVMHTGEKPHRCSLCEKAFSRKFMLTEHQRTHTEKPYECPCEGKAFLLKKSRLNIH
 QKTHTEKPYICSECGKFIQKGNLIVHQRHTGEKPYICNECGKFIQKTLIAHQRFHTGKTPFVCS
 CGKSCSQKSLIKHQRIHTGEKPFECSECGKAFSTKQKLIHQRHTGERPYGCNECGKAFAYMSCLVKH
 KRIHTREKQEAAKVENPPAERHSSLHTSDVMQEKNSANGATTQVPSVAPQTSLNISGLLANRNVVLVGP
 VVRCASGDNRGFAQDRNLVNAVNVVPSVINYVLFYVTENP

TRTRPLEQKLISEEDLAANDILDYKDDDDKV

Chromatograms:

https://cdn.origene.com/chromatograms/mk6206_d07.zip

Restriction Sites:

SgfI-MluI

Cloning Scheme:


ACCN: NM_021632

ORF Size: 1596 bp

OTI Disclaimer: The molecular sequence of this clone aligns with the gene accession number as a point of reference only. However, individual transcript sequences of the same gene can differ through naturally occurring variations (e.g. polymorphisms), each with its own valid existence. This clone is substantially in agreement with the reference, but a complete review of all prevailing variants is recommended prior to use. [More info](#)

OTI Annotation: This clone was engineered to express the complete ORF with an expression tag. Expression varies depending on the nature of the gene.

Components: The ORF clone is ion-exchange column purified and shipped in a 2D barcoded Matrix tube containing 10ug of transfection-ready, dried plasmid DNA (reconstitute with 100 ul of water).

- Reconstitution Method:**
1. Centrifuge at 5,000xg for 5min.
 2. Carefully open the tube and add 100ul of sterile water to dissolve the DNA.
 3. Close the tube and incubate for 10 minutes at room temperature.
 4. Briefly vortex the tube and then do a quick spin (less than 5000xg) to concentrate the liquid at the bottom.
 5. Store the suspended plasmid at -20°C. The DNA is stable for at least one year from date of shipping when stored at -20°C.

RefSeq: [NM_021632.4](#)

RefSeq Size: 2358 bp

RefSeq ORF: 1599 bp

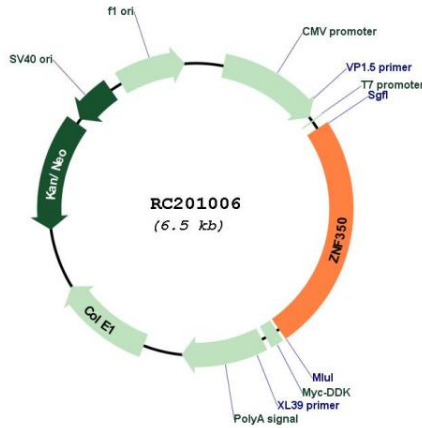
Locus ID: 59348

UniProt ID: [Q9GZX5](#)

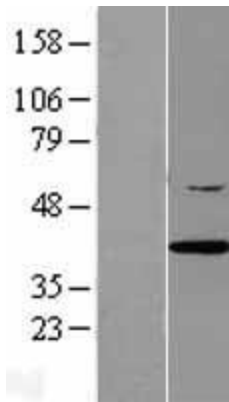
Cytogenetics: 19q13.41

Domains: KRAB, zf-C2H2
Protein Families: Transcription Factors
MW: 60 kDa
Gene Summary: Transcriptional repressor. Binds to a specific sequence, 5'-GGGxxxCAGxxxTTT-3', within GADD45 intron 3.[UniProtKB/Swiss-Prot Function]

Product images:



Circular map for RC201006



Western blot validation of overexpression lysate (Cat# [LY411959]) using anti-DDK antibody (Cat# [TA50011-100]). Left: Cell lysates from untransfected HEK293T cells; Right: Cell lysates from HEK293T cells transfected with RC201006 using transfection reagent MegaTran 2.0 (Cat# [TT210002]).