

## Product datasheet for **RC200997**

### **MCHR (MCHR1) (NM\_005297) Human Tagged ORF Clone**

#### **Product data:**

Product Type:	Expression Plasmids
Product Name:	MCHR (MCHR1) (NM_005297) Human Tagged ORF Clone
Tag:	Myc-DDK
Symbol:	MCHR
Synonyms:	GPR24; MCH-1R; MCH1R; SLC-1; SLC1
Mammalian Cell Selection:	Neomycin
Vector:	pCMV6-Entry (PS100001)
E. coli Selection:	Kanamycin (25 ug/mL)



[View online »](#)

**ORF Nucleotide Sequence:**

>RC200997 ORF sequence  
 Red=Cloning site Blue=ORF Green=Tags(s)

TTTTGTAATACGACTCACTATAGGGCGGCCGGAATTCGTCGACTGGATCCGGTACCGAGGAGATCTGCC  
 GCC**GCGATCGCC**

ATGTCAGTGGGAGCCATGAAGAAGGGAGTGGGAGGGCAGTTGGGCTTGGAGCGCAGCGGCTGCCAGG  
 CTACGGAGGAAGACCCCTTCCCGACTGCGGGGCTTGCCTCCGGGACAAGGTGGCAGGCGCTGGAGGCT  
 GCCGCAGCCTGCGTGGGTGGAGGGGAGCTCAGCTCGGTTGTGGGAGCAGGCGACCGGCACTGGCTGGATG  
 GACCTGGAAGCCTCGCTGCTGCCACTGGTCCCAATGCCAGCAACACCTCTGATGGCCCCGATAACCTCA  
 CTTCCGGCAGGATCACCTCCTCGCACGGGGAGCATCTCCTACATCAACATCATCATGCCTTCGGTGTTCGG  
 CACCATCTGCCTCCTGGGCATCATCGGGAACCCACGGTCATCTTCGCGGTCGTGAAGAAGTCCAAGCTG  
 CACTGGTGCAACAACGTCCCGACATCTTCATCATCAACCTCTCGGTAGTAGATCTCCTCTTTCTCCTGG  
 GCATGCCCTTCATGATCCACCAGCTCATGGCAATGGGGTGTGGCACTTTGGGGAGACCATGTGCACCT  
 CATCACGGCCATGGATGCCAATAGTCAGTTCACCAGCACCTACATCCTGACCGCCATGGCCATTGACCGC  
 TACCTGGCCACTGTCCACCCCATCTCTCCACGAAGTTCGGGAAGCCCTCTGTGGCCACCCTGGTGTATCT  
 GCCTCCTGTGGCCCTCTCCTTCATCAGCATCACCCCTGTGTGGCTGTATGCCAGACTCATCCCCTTCCC  
 AGGAGGTGCAGTGGGCTGCGGCATACGCCTGCCAACCAGACACTGACCTCTACTGGTTACCCTGTAC  
 CAGTTTTTCTGGCCTTTGCCCTGCCTTTTGTGGTCATCACAGCCGCATACGTGAGGATCCTGCAGCGCA  
 TGACGTCTCAGTGGCCCCCGCTCCACGCGCAGCATCCGGTGCAGCAAAAGAGGGTGACCCGCACAGC  
 CATCGCCATCTGTCTGGTCTTCTTTGTGTGCTGGGCACCCTACTATGTGCTACAGCTGACCCAGTTGTCC  
 ATCAGCCGCCCGACCCTCACCTTTGTCTACTTATACAATGCGGCCATCAGCTTGGGCTATGCCAACAGCT  
 GCCTCAACCCCTTTGTGTACATCGTCTGTGTGAGACGTTCCGCAAACGCTTGGTCTGTGGTGAAGCC  
 TGCAGCCAGGGGAGCTTCGCGCTGTACAGCAACGCTCAGACGGCTGACGAGGAGAGGACAGAAAGCAAA  
 GGCACC

**ACGCGT**ACGCGGCCGCTCGAGCAGAAACTCATCTCAGAAGAGGATCTGGCAGCAAATGATATCCTGGATT  
 ACAAGGATGACGACGATAAGGTTTAA

**Protein Sequence:**

>RC200997 protein sequence  
 Red=Cloning site Green=Tags(s)

MSVGAMKKGVGRAVGLGGGSGCQATEEDPLPDCGACAPGQGGRRWRLPQPAWVEGSSARLWEQATGTGWM  
 DLEASLLPTGPNASNTSDGPDNLTSAGSPPTGSIYINIIMPSVFGTICLLGIIGNSTVIFAVVKKSKL  
 HWCNNVPDIFIINLSVVDLLFLLGMPFMIHQLMGNGVWHFGETMCTLITAMDANSQFTSTYILTAMAIDR  
 YLATVHPISSTKFRKPSVATLVIICLLWALSFIISITPVWLYARLIPFPGGAVGCGIRLNPNDTLYWFTLY  
 QFFLAFALPFVVIITAAYVRILQRMTSSVAPASQRSIRLRTKRVTRTAIAICLVFFVCWAPYYVLQLTQLS  
 ISRPTLTFVYLYNAAISLGYANSCLNPFVYIVLCETFRKRLVLSVKPAAQQLRAVSNQAQADEERTEK  
 GT

**TR**TRPLEQKLISEEDLAANDILDYKDDDDKV

**Chromatograms:**

[https://cdn.origene.com/chromatograms/mk6080\\_c04.zip](https://cdn.origene.com/chromatograms/mk6080_c04.zip)

**Restriction Sites:**

Sgfl-Mlul

**Cloning Scheme:**


**ACCN:** NM\_005297

**ORF Size:** 1266 bp

**OTI Disclaimer:** The molecular sequence of this clone aligns with the gene accession number as a point of reference only. However, individual transcript sequences of the same gene can differ through naturally occurring variations (e.g. polymorphisms), each with its own valid existence. This clone is substantially in agreement with the reference, but a complete review of all prevailing variants is recommended prior to use. [More info](#)

**OTI Annotation:** This clone was engineered to express the complete ORF with an expression tag. Expression varies depending on the nature of the gene.

**Components:** The ORF clone is ion-exchange column purified and shipped in a 2D barcoded Matrix tube containing 10ug of transfection-ready, dried plasmid DNA (reconstitute with 100 ul of water).

**Reconstitution Method:**

1. Centrifuge at 5,000xg for 5min.
2. Carefully open the tube and add 100ul of sterile water to dissolve the DNA.
3. Close the tube and incubate for 10 minutes at room temperature.
4. Briefly vortex the tube and then do a quick spin (less than 5000xg) to concentrate the liquid at the bottom.
5. Store the suspended plasmid at -20°C. The DNA is stable for at least one year from date of shipping when stored at -20°C.

**RefSeq:** [NM\\_005297.2](#), [NP\\_005288.2](#)

**RefSeq Size:** 2423 bp

**RefSeq ORF:** 1062 bp

**Locus ID:** 2847

**UniProt ID:** [Q99705](#)

**Cytogenetics:** 22q13.2

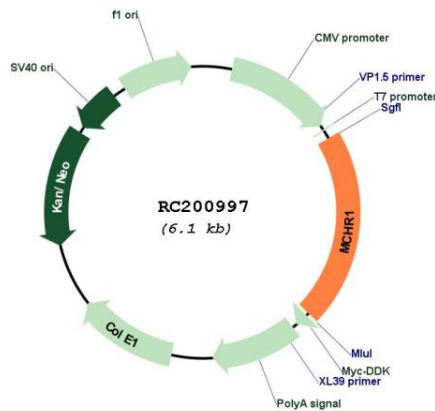
**Protein Families:** Druggable Genome, GPCR, Transmembrane

**Protein Pathways:** Neuroactive ligand-receptor interaction

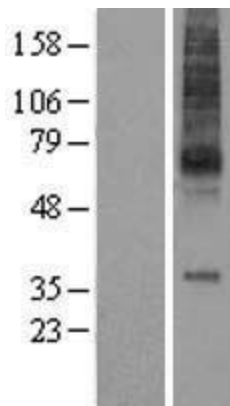
**MW:** 46 kDa

**Gene Summary:** The protein encoded by this gene, a member of the G protein-coupled receptor family 1, is an integral plasma membrane protein which binds melanin-concentrating hormone. The encoded protein can inhibit cAMP accumulation and stimulate intracellular calcium flux, and is probably involved in the neuronal regulation of food consumption. Although structurally similar to somatostatin receptors, this protein does not seem to bind somatostatin. [provided by RefSeq, Jul 2008]

**Product images:**



Circular map for RC200997



Western blot validation of overexpression lysate (Cat# [LY417396]) using anti-DDK antibody (Cat# [TA50011-100]). Left: Cell lysates from untransfected HEK293T cells; Right: Cell lysates from HEK293T cells transfected with RC200997 using transfection reagent MegaTran 2.0 (Cat# [TT210002]).