

Product datasheet for **RC200991**

POLR3GL (NM_032305) Human Tagged ORF Clone

Product data:

Product Type:	Expression Plasmids
Product Name:	POLR3GL (NM_032305) Human Tagged ORF Clone
Tag:	Myc-DDK
Symbol:	POLR3GL
Synonyms:	flj32422; RPC32HOM
Mammalian Cell Selection:	Neomycin
Vector:	pCMV6-Entry (PS100001)
E. coli Selection:	Kanamycin (25 ug/mL)
ORF Nucleotide Sequence:	>RC200991 ORF sequence Red=Cloning site Blue=ORF Green=Tags(s)

TTTTGTAATACGACTCACTATAGGGCGGCCGGAATTCGTCGACTGGATCCGGTACCGAGGAGATCTGCCGCC**CGATCGCC**

ATGGCCAGCCGGGGTGGGGCGGGGTCGTGGCCGGGGCCAGTTGACCTTCAACGTGGAGGCCGTGGGCA
TTGGGAAAGGGGATGCTTTGCCCCACCCACCCTGCAGCCTTCTCCACTTTCCTCCCTTGAGTTCGG
CCCAGTACCTTTGCCCTCAGGCGAGGAAGGGGAATATGTCCTGGCACTGAAGCAAGAGCTACGAGGAGCC
ATGAGGCAGCTCCCTACTTCATCCGGCCAGCTGTCCCAAGAGAGATGTGGAGCGTTATTCAGACAAT
ATCAGATGTCAGGTCCGATTGACAATGCCATCGATTGGAACCTGATTGGCGGCGTCTACCCGGGAGCT
AAAGATCCGAGTGCAGGAACTACAGAAGGAACGGATTACAATTCTGCTCCCAAGAGGCCCTAAGACC
ACAGAAGATAAGGAGAAACAATACAGAACTAGAGACCCTGGAGAAGAAGGAAGAAGTAATTCAG
AGGAGGATGAGGAGAAAGAAGAAGAAGAGAAGGAAGGAGGAGGAAGAAGAAGATATGATGAAGAAGA
ACATGAAGAGGAACTGATTACATCATGTCATATTTGACAATGGAGAGGACTTTGGTGGTGACAGTGAT
GACAATATGGACGAGGCTATATAC

ACGCGTACGCGGCGCTCGAGCAGAACTCATCTCAGAAGAGGATCTGGCAGCAATGATATCCTGGATT
ACAAGGATGACGACGATAAGGTTTAA



[View online »](#)

Protein Sequence: >RC200991 protein sequence
Red=Cloning site Green=Tags(s)

MASRGGGRGRGRGQLTFNVEAVGIGKGDALPPPTLQPSPLFPPLEFRPVPLPSGEEGEYVLALKQELRGA
 MRQLPYFIRPAVPKRDVERYSDKYQMSGPIDNAIDWNPDRRLPRELKIRVRKLQKERITILLPKRPPKT
 TEDKEETIQKLETLEKKEEVTSEEDKEEEEEEEEEEEEEEEEEEEYDEEEHEEETDYIMSYFDNGEDFGGDSD
 DNMDEAIY

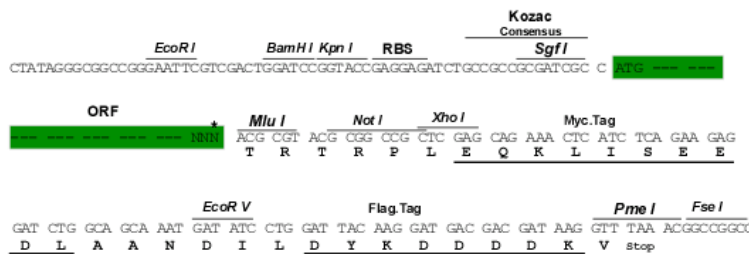
TRTRPLEQKLISEEDLAANDILDYKDDDDKV

Chromatograms: https://cdn.origene.com/chromatograms/mk6392_e05.zip

Restriction Sites: SgfI-MluI

Cloning Scheme:

Cloning sites used for ORF Shuttling:



* The last codon before the Stop codon of the ORF

ACCN: NM_032305

ORF Size: 654 bp

OTI Disclaimer: The molecular sequence of this clone aligns with the gene accession number as a point of reference only. However, individual transcript sequences of the same gene can differ through naturally occurring variations (e.g. polymorphisms), each with its own valid existence. This clone is substantially in agreement with the reference, but a complete review of all prevailing variants is recommended prior to use. [More info](#)

OTI Annotation: This clone was engineered to express the complete ORF with an expression tag. Expression varies depending on the nature of the gene.

Components: The ORF clone is ion-exchange column purified and shipped in a 2D barcoded Matrix tube containing 10ug of transfection-ready, dried plasmid DNA (reconstitute with 100 ul of water).

Reconstitution Method:

1. Centrifuge at 5,000xg for 5min.
2. Carefully open the tube and add 100ul of sterile water to dissolve the DNA.
3. Close the tube and incubate for 10 minutes at room temperature.
4. Briefly vortex the tube and then do a quick spin (less than 5000xg) to concentrate the liquid at the bottom.
5. Store the suspended plasmid at -20°C. The DNA is stable for at least one year from date of shipping when stored at -20°C.

Note: Plasmids are not sterile. For experiments where strict sterility is required, filtration with 0.22um filter is required.

RefSeq: [NM_032305.3](#)

RefSeq Size: 1191 bp

RefSeq ORF: 657 bp

Locus ID: 84265

UniProt ID: [Q9BT43](#)

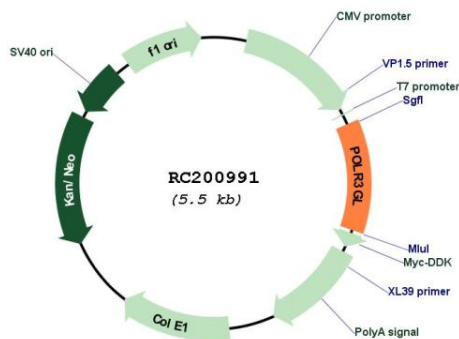
Cytogenetics: 1q21.1

Protein Pathways: Cytosolic DNA-sensing pathway, Metabolic pathways, Purine metabolism, Pyrimidine metabolism, RNA polymerase

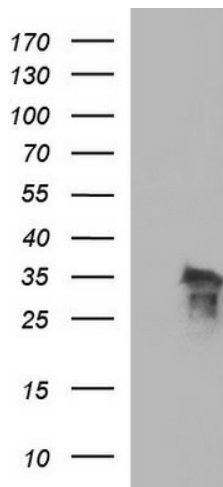
MW: 25.3 kDa

Gene Summary: DNA-dependent RNA polymerase catalyzes the transcription of DNA into RNA using the four ribonucleoside triphosphates as substrates. Specific peripheric component of RNA polymerase III which synthesizes small RNAs, such as 5S rRNA and tRNAs.[UniProtKB/Swiss-Prot Fbnc]

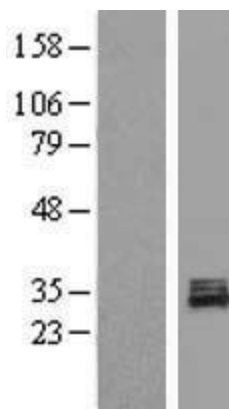
Product images:



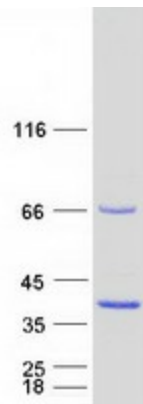
Circular map for RC200991



HEK293T cells were transfected with the pCMV6-ENTRY control (Cat# [PS100001], Left lane) or pCMV6-ENTRY POLR3GL (Cat# RC200991, Right lane) cDNA for 48 hrs and lysed. Equivalent amounts of cell lysates (5 ug per lane) were separated by SDS-PAGE and immunoblotted with anti-POLR3GL (Cat# [TA506865]). Positive lysates [LY410247] (100ug) and [LC410247] (20ug) can be purchased separately from OriGene.



Western blot validation of overexpression lysate (Cat# [LY410247]) using anti-DDK antibody (Cat# [TA50011-100]). Left: Cell lysates from untransfected HEK293T cells; Right: Cell lysates from HEK293T cells transfected with RC200991 using transfection reagent MegaTran 2.0 (Cat# [TT210002]).



Coomassie blue staining of purified POLR3GL protein (Cat# [TP300991]). The protein was produced from HEK293T cells transfected with POLR3GL cDNA clone (Cat# RC200991) using MegaTran 2.0 (Cat# [TT210002]).