

## Product datasheet for **RC200978**

### GSG1 (NM\_031289) Human Tagged ORF Clone

#### Product data:

Product Type:	Expression Plasmids
Product Name:	GSG1 (NM_031289) Human Tagged ORF Clone
Tag:	Myc-DDK
Symbol:	GSG1
Mammalian Cell Selection:	Neomycin
Vector:	pCMV6-Entry (PS100001)
E. coli Selection:	Kanamycin (25 ug/mL)
ORF Nucleotide Sequence:	>RC200978 ORF sequence Red=Cloning site Blue=ORF Green=Tags(s)

TTTTGTAATACGACTCACTATAGGGCGGCCGGAATTCGTCGACTGGATCCGGTACCGAGGAGATCTGCC  
GCC**CGATCGCC**

ATGGAGCTCTCGAAGGCCTTCTCTGGCCAGCGGACACTCCTATCTGCCATCCTCAGCATGCTATCACTCA  
GCTTCTCCACAACATCCCTGCTCAGCAACTACTGGTTTGTGGGCACACAGAAGGTGCCCAAGCCCCTGTG  
CGAGAAAGGTCTGGCAGCCAAGTGCTTTGACATGCCAGTGCCCTGGATGGAGATACCAACACATCCACC  
CAGGAGGTGGTACAATACTGGGAGACTGGGATGACCGTTCTCCTCCGGAGCTTCCGGAGTGGCA  
TGTGGCTATCCTGTGAGGAACTGTGGAAGAACCAGGGAGAGGTGCCGAAGTTTCATTGAACCTACAC  
ACCAGCCAAGAGAGGTGAGAAAGGACTACTGGAATTTGCCACGTTGCAAGGCCCATGTCACCCCACTCTC  
CGATTTGGAGGGAAGCGTTGATGGAGAAGGCTTCCCTCCCTCCCTCCCTTGGGGCTTTGTGGCAAAA  
ATCCTATGGTTATCCCTGGGAACGCAGATCACCTACATCGGACTTCAATTCATCAGCTTCTCCTGCTAC  
TAACAGACTTGCTACTACTGGGAACCCTGCCTGTGGGCTCAAACCTGAGCGCCTTTGCTGCTGTTTCCTC  
TGTCTGTGAGGTCTCCTGGGATGGTGGCCACATGATGATTACAAAGTCTTCCAAGCGACTGTCAAC  
TTGGGTCCAGAAGACTGGAGACCACATGTTTGAATTATGGCTGGGCCTTCTACATGGCCTGGCTCTCT  
TCACCTGCTGCATGGCGTCGGCTGTCAACACGTACACCAGGATGGTCTGGAGTTCAAGT  
CAAGCA

**ACGCGT**ACGCGGCCGCTCGAGCAGAAACTCATCTCAGAAGAGGATCTGGCAGCAAATGATATCCTGGATT  
ACAAGGATGACGACGATAAGGTTTAA



[View online »](#)

**Protein Sequence:** >RC200978 protein sequence  
Red=Cloning site Green=Tags(s)

MELSKAFSGQRTLLSAILSMLSLSFSSTTLLSNYWFVGTQKVPKPLCEKGLAAKCFDMPVSLDGDNTST  
 QEVVQYNWETGDDRF SFRSFRSGMWLSCEETVEEPGERCSFIELTPPAKRGEKGLLEFATLQGPCHPTL  
 RFGGKRLMEKASLPSPPLGLCGKNPMVIPGNADHLHRTSIHQLPATNRLATHWEPCLWAQTERLCCCFL  
 CPVRS PGDGGPHDVFTSLP SDCQLGSRRL ETTCLELWLGLLHGLALLHLLHGVGCHHLQHVHQDGAGVQV  
 QA

TRTRPLEQKLISEEDLANDILDYKDDDDKV

**Chromatograms:** [https://cdn.origene.com/chromatograms/mk6071\\_g04.zip](https://cdn.origene.com/chromatograms/mk6071_g04.zip)

**Restriction Sites:** SgfI-MluI

**Cloning Scheme:**

Cloning sites used for ORF Shuttling:



**ACCN:** NM\_031289

**ORF Size:** 846 bp

**OTI Disclaimer:** The molecular sequence of this clone aligns with the gene accession number as a point of reference only. However, individual transcript sequences of the same gene can differ through naturally occurring variations (e.g. polymorphisms), each with its own valid existence. This clone is substantially in agreement with the reference, but a complete review of all prevailing variants is recommended prior to use. [More info](#)

**OTI Annotation:** This clone was engineered to express the complete ORF with an expression tag. Expression varies depending on the nature of the gene.

**Components:** The ORF clone is ion-exchange column purified and shipped in a 2D barcoded Matrix tube containing 10ug of transfection-ready, dried plasmid DNA (reconstitute with 100 ul of water).

**Reconstitution Method:**

1. Centrifuge at 5,000xg for 5min.
2. Carefully open the tube and add 100ul of sterile water to dissolve the DNA.
3. Close the tube and incubate for 10 minutes at room temperature.
4. Briefly vortex the tube and then do a quick spin (less than 5000xg) to concentrate the liquid at the bottom.
5. Store the suspended plasmid at -20°C. The DNA is stable for at least one year from date of shipping when stored at -20°C.

**RefSeq:** [NM\\_031289.1](#), [NP\\_112579.1](#)

**RefSeq Size:** 2668 bp

**RefSeq ORF:** 858 bp

**Locus ID:** 83445

**UniProt ID:** [Q2KHT4](#)

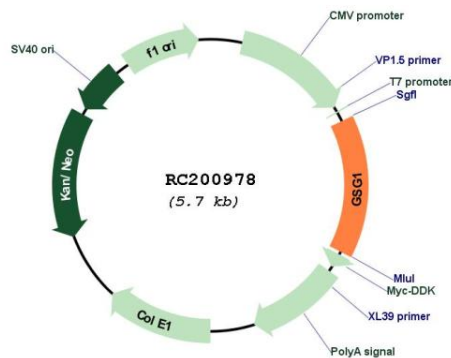
**Cytogenetics:** 12p13.1

**Protein Families:** Transmembrane

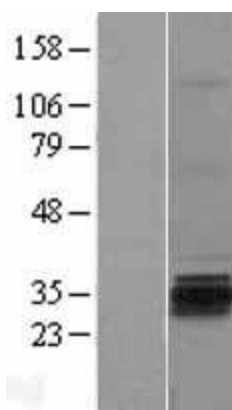
**MW:** 31.1 kDa

**Gene Summary:** May cause the redistribution of PAPOLB from the cytosol to the endoplasmic reticulum. [UniProtKB/Swiss-Prot Function]

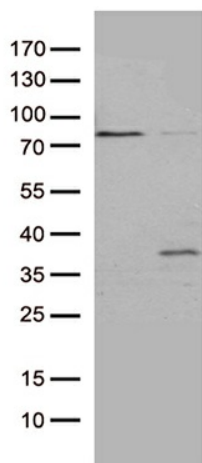
### Product images:



Circular map for RC200978



Western blot validation of overexpression lysate (Cat# [LY403106]) using anti-DDK antibody (Cat# [TA50011-100]). Left: Cell lysates from untransfected HEK293T cells; Right: Cell lysates from HEK293T cells transfected with RC200978 using transfection reagent MegaTran 2.0 (Cat# [TT210002]).



HEK293T cells were transfected with the pCMV6-ENTRY control (Cat# [PS100001], Left lane) or pCMV6-ENTRY GSG1 (Cat# RC200978, Right lane) cDNA for 48 hrs and lysed. Equivalent amounts of cell lysates (5 ug per lane) were separated by SDS-PAGE and immunoblotted with anti-GSG1 (Cat# [TA811995])(1:2000). Positive lysates [LY403106] (100ug) and [LC403106] (20ug) can be purchased separately from OriGene.