

Product datasheet for **RC200968**

Pericentrin 1 (NUP85) (NM_024844) Human Tagged ORF Clone

Product data:

Product Type:	Expression Plasmids
Product Name:	Pericentrin 1 (NUP85) (NM_024844) Human Tagged ORF Clone
Tag:	Myc-DDK
Symbol:	Pericentrin 1
Synonyms:	FROUNT; NPHS17; Nup75
Mammalian Cell Selection:	Neomycin
Vector:	pCMV6-Entry (PS100001)
E. coli Selection:	Kanamycin (25 ug/mL)



[View online »](#)

ORF Nucleotide
Sequence:

>RC200968 ORF sequence
Red=Cloning site Blue=ORF Green=Tags(s)

TTTTGTAATACGACTCACTATAGGGCGGCCGGAATTCGTCGACTGGATCCGGTACCGAGGAGATCTGCC
GCCCGATCGCC

ATGGAGGAGCTCGATGGCGAGCCAAACAGTCACTTTGATTCCAGGCGTGAATTC AAGAAGAACCAATGT
ATTTTGACTGGGTCCAGGGGAGATGCTGGTATGTGAAACCTCCTTCAACAAAAAGAAAAATCAGAGAT
GGTGCCAAGTTGCCCTTTATCTATATCATCCGTAAGGATGTAGATGTTTACTCTCAAATCTTGAGAAAA
CTCTTCAATGAATCCCATGGAATCTTTCTGGGCCTCCAGAGAATTGACGAAGAGTTGACTGGAAAAATCCA
GAAAAATCTCAATTGGTTCGAGTGAGTAAAACTACCGATCAGTCATCAGAGCATGTATGGAGGAAATGCA
CCAGGTTGCAATTGCTGCTAAAGATCCAGCCAATGGCCGCCAGTTCAGCAGCCAGGTCTCCATTTTGTC
GCAATGGAGCTCATCTGGAACCTGTGTGAGATTCTTTTTATTGAAGTGGCCCCAGCTGGCCCTCTCTCC
TCCATCTCCTTGACTGGGTCCGGCTCCATGTGTGCGAGGTGGACAGTTTGTGCGCAGATGTTCTGGCGAG
TGAGAATCCAAGCAAACATGACAGCTTCTGGAACCTGGTGACCATCTTGGTGTGACAGGCGCGCTGGAT
GAGGCCCGACAGATGCTCTCCAAGGAAGCCGATGCCAGCCCCGCCTCTGCAGGCATATGCCGAATCATGG
GGGACCTGATGAGGACAATGCCATTCTTAGTCCTGGGAACACCCAGACACTGACAGAGCTGGAGCTGAA
GTGGCAGCACTGGCAGGAAATGTGAGCGGTACCTCCAGGACAGCACATTGCCACCAGCCCTCACCTG
GAGTCTCTTTGAAGATTATGCTGGGAGACGAAGCTGCCTTGTAGAGCAGAAGGAACTTCTGAGTAATT
GGTATCATTTCCTAGTGACTCGGCTCTTGTACTCCAATCCCACAGTAAAACCCATTGATCTGCACTACTA
TGCCACAGTCCAGCCTGGACCTGTTTCTGGGAGGTGAGAGCAGCCAGAACCCTGGACAACATCTTGTG
GCAGCCTTTGAGTTTGACATCCATCAAGTAATCAAAGAGTGCAGCATCGCCCTGAGCAACTGGTGGTTG
TGGCCACCTGACAGACCTGCTGGACACTGCAAGCTCCTCCAGTCACACAACCTCTATTTCCGTTCCAA
CATGAGAGAGTTCTCCTGCTGGAGTACGCCTCGGGACTGTTTGCATCCCAGCCTGTGGCAGCTGGGG
GTCGATTACTTTGATTACTGCCCGAGCTGGGCCGAGTCTCCCTGGAGCTGCACATTGAGCGGATACCTC
TGAACACCGAGCAGAAAGCCCTGAAGGTGCTGCGGATCTGTGAGCAGCGCAGATGACTGAACAAGTTG
CAGCATTGTGAAGATCTTAGCCATGAAAGCCGTCGCAACAATCGCCTGGGTTCTGCCCTCTTTGGAGC
ATCCGTGCTAAGGATGCCGCTTTGCCACGCTCGTGTGACAGAGTTCTCAGGGATTACTGTGAGCGAG
GCTGCTTTTCTGATTTGGATCTCATTGACAACCTGGGGCCAGCCATGATGCTCAGTGACCGACTGACATT
CCTGGGAAAGTATCGCGAGTTCCACCGTATGTACGGGGAGAAGCGTTTTTGCCGACGCAGCTTCTCTCCTT
CTGTCTTGATGACGTCTCGGATTGCCCTCGGCTTTTCTGGATGACTCTGCTGACAGATGCCTTGCCCC
TTTTGGAACAGAAACAGGTGATTTTCTCAGCAGAACAGACTTATGAGTTGATGCGGTGTCTGGAGGACTT
GACGTCAAGAAGACCTGTGCATGGAGAATCTGATACCGAGCAGCTCCAGGATGATGACATAGAGACCACC
AAGGTGGAAATGCTGAGACTTTCTCTGGCACGAAATCTTGTCTGGGCAATTATAAGAGAAGGCTCACTGG
AAGTTCC

ACGCGTACGCGGCCGCTCGAGCAGAAACTCATCTCAGAAGAGGATCTGGCAGCAATGATATCCTGGATT
ACAAGGATGACGACGATAAGGTTTAA

Protein Sequence: >RC200968 protein sequence
 Red=Cloning site Green=Tags(s)

MEELDGEPTVTLIPGVNSKKNQMYFDWGPGEMLVCETSFNKKKSEMVPSCPFYIYIRKDVVYSQILRK
 LFNESHGIFLGLQRIDEELTGKSRKSQLVRVSKNYRSVIRACMEEMHQVAIAAKDPANGROFSSQVSILS
 AMELIWNLCIEILFIEVAPAGPLLLHLLDWVRLHVCEVDSLADVLGSENP SKHDSFWNLVTILVLQGRLD
 EARQMLSKREADASPASAGICRIMGDLMRTPILSPGNTQTLTELELKWQHWHEECERYLQDSTFATSPHL
 ESLLKIMLGDEAALLEQKELLSNWFYHFLVTRLLYSNPTVKPIDLHYAQSLLDLFLGGESSPEPLDNILL
 AAFEFDIHQVIKECSIALSNWVFAHLTDLLDHCKLLQSHNLYFGSNMREFLLLEYASGLFAHPSLWQLG
 VDYFDYCPDELGRVSLLEHIERIPLNTEQKALKVLRICEQRQMQTEQVRSICKILAMKAVRNNRGLSALSWS
 IRAKDAAFATLVSDRFLRDYCEGCFSDLIDLNLGPAMMLSDRLTFLGKYREFHRMYGEKRFADAASLL
 LSLMTRSRIAPRSFWMTLT DALPLLEQKQVIFSAEQTYELMRCLEDLTSRRPVHGESDTEQLQDDDIETT
 KVEMLRSLARNLARAIIREGSLEGS

TRTRPLEQKLISEEDLAANDILDYKDDDDKV

Chromatograms: https://cdn.origene.com/chromatograms/mk6128_b05.zip

Restriction Sites: SgfI-MluI

Cloning Scheme:



ACCN: NM_024844

ORF Size: 1968 bp

OTI Disclaimer: The molecular sequence of this clone aligns with the gene accession number as a point of reference only. However, individual transcript sequences of the same gene can differ through naturally occurring variations (e.g. polymorphisms), each with its own valid existence. This clone is substantially in agreement with the reference, but a complete review of all prevailing variants is recommended prior to use. [More info](#)

OTI Annotation: This clone was engineered to express the complete ORF with an expression tag. Expression varies depending on the nature of the gene.

Components: The ORF clone is ion-exchange column purified and shipped in a 2D barcoded Matrix tube containing 10ug of transfection-ready, dried plasmid DNA (reconstitute with 100 ul of water).

Reconstitution Method:

1. Centrifuge at 5,000xg for 5min.
2. Carefully open the tube and add 100ul of sterile water to dissolve the DNA.
3. Close the tube and incubate for 10 minutes at room temperature.
4. Briefly vortex the tube and then do a quick spin (less than 5000xg) to concentrate the liquid at the bottom.
5. Store the suspended plasmid at -20°C. The DNA is stable for at least one year from date of shipping when stored at -20°C.

Note: Plasmids are not sterile. For experiments where strict sterility is required, filtration with 0.22um filter is required.

RefSeq: [NM_024844.2](#), [NP_079120.1](#)

RefSeq Size: 2311 bp

RefSeq ORF: 1971 bp

Locus ID: 79902

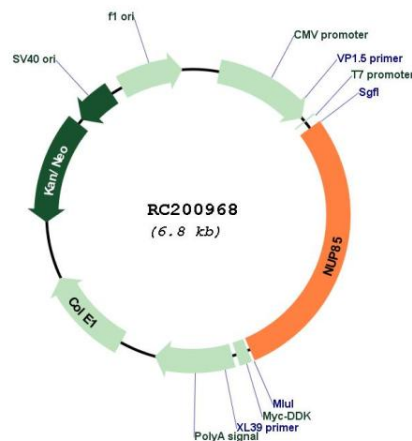
UniProt ID: [Q9BW27](#)

Cytogenetics: 17q25.1

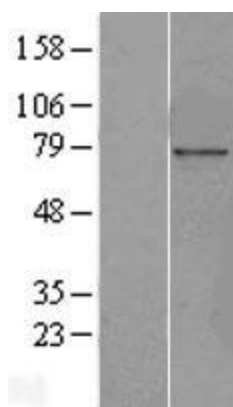
MW: 75 kDa

Gene Summary: This gene encodes a protein component of the Nup107-160 subunit of the nuclear pore complex. Nuclear pore complexes are embedded in the nuclear envelope and promote bidirectional transport of macromolecules between the cytoplasm and nucleus. The encoded protein can also bind to the C-terminus of chemokine (C-C motif) receptor 2 (CCR2) and promote chemotaxis of monocytes, thereby participating in the inflammatory response. Alternative splicing results in multiple transcript variants. [provided by RefSeq, Dec 2014]

Product images:



Circular map for RC200968



Western blot validation of overexpression lysate (Cat# [LY403035]) using anti-DDK antibody (Cat# [TA50011-100]). Left: Cell lysates from untransfected HEK293T cells; Right: Cell lysates from HEK293T cells transfected with RC200968 using transfection reagent MegaTran 2.0 (Cat# [TT210002]).