

Product datasheet for **RC200966**

HTF9C (TRMT2A) (NM_182984) Human Tagged ORF Clone

Product data:

Product Type:	Expression Plasmids
Product Name:	HTF9C (TRMT2A) (NM_182984) Human Tagged ORF Clone
Tag:	Myc-DDK
Symbol:	HTF9C
Synonyms:	HTF9C
Mammalian Cell Selection:	Neomycin
Vector:	pCMV6-Entry (PS100001)
E. coli Selection:	Kanamycin (25 ug/mL)



[View online »](#)

ORF Nucleotide Sequence:

>RC200966 ORF sequence
 Red=Cloning site Blue=ORF Green=Tags(s)

TTTTGTAATACGACTCACTATAGGGCGGCCGGGAATTCGTCGACTGGATCCGGTACCGAGGAGATCTGCC
 GCC**CGGATCGCC**

ATGAGTGAGAACCTCGACAACGAGGGCCGAAGCCCATGGAGAGCTGTGGCCAGGAGAGCAGCAGTGCC
 TGAGCTGCCCTACCGTCTCGGTGCCCTCGAGCCCCGGCAGCCCTGGAGGAGGTGGAGAAAAGAGGGCGC
 TGGGGCGGCTACAGGGCCGGGGCTCAGCCCGGCTCTACAGCTACATCAGGGATGACTTGTTTACCTCT
 GAGATCTTTAAACTGGAGCTGCAGAACGTGCCTCGCCACGCCAGCTTCAGCGACGTCGCGCCTTCTGG
 GCCGTTTGGTCTGCAGCCCCACAAAACCAAACCTTTGGGCAACCACCCTGCGCCTTTGTGACATTCCG
 CAGCGCTGCAGAGAGGGACAAGGCCCTGCGCGTTTTGCATGGTGCCTCTGAAAAGGCCGCCACTCAGT
 GTGCGCTGGCCCGCCAAAGGCCGACCCATGGCCAGGAGGAGGCGACAGGAGGTGAGAGTGAGCCAC
 CAGTAACACGAGTGGCCGACGTGGTACCCTCTATGGACAGTGCCTATGCTGAGCAGCTTGAGCGGAA
 GCAGCTGGAGTGGAGCAGGTGCTGCAGAACTTGCCAAGGAAATCGGGAGCACCAACCGTGCCTTGCTG
 CCCTGGCTGCTCGAGCAGAGGCACAAGCACAACAAGGCCCTGCTGCCCGCTGGAGGGGGTCAAGCCATCAC
 CCCAGCAGACTGAGTATCGTAATAAGTGTGAGTTTCTGGTTGGCGTGGGGTGGATGGGGAGGATAACAC
 CGTGGGCTGTGGCTCGGCAAGTACAAGGGCGGGACGTGTGCTGTGGCAGCCCCGTTTGACACCGTGAC
 ATCCCCGAAGCCACCAAGCAGGTGGTGAAGGCCTTCCAGGAGTTCATCCGGTCCACTCCATACTCGGCAT
 ACGACCCAGAGACGTACACAGGCCACTGGAAGCAGCTGACTGTGCGCACCAGCCCGCCACCAGGCCAT
 GGCCATTGCCTACTTCCACCCCAAGAAGCTGAGCCCTGAGGAGCTGGCAGAGCTGAAGACCTCCCTAGCG
 CAGCACTTACAGCAGGGCCAGGCAGGCCAGTGGAGTGCCTGCCTCTACTTCGTTGGAGAGGGACAGC
 GAAAGACTCCTAGCCAGGAGGGCTGCCCTGGAGCATGGCTGGGGACCGGTGCATCCACGAGGACCT
 GCTAGGGCTGACCTCCGGATCTCTCCACACGCCCTTCTCCAGGTGAACACACCCCGAGCCGAGGTGCTC
 TACACAGTCATCCAGGACTGGGCCAAATTGGATGCGGGGAGCATGGTGTGGACGTGTGCTGTGGCACC
 GCACATTGGCTGGCCCTGGCCCGGAAGGTAAGAGGGTCATTGGGGTGGAGCTATGCCAGAGGCTGT
 GGAGGACGCCCGGTGAACGCCAGGACAATGAGTTGAGTAATGTGGAGTCCACTGCGGGAGGGCCGAG
 GACCTGGTGGCCACCCTGGTGGCAGACTGGCCTCCCAGCACCTCGTGGCCATCCTGGACCACCCCGTG
 CTGGCTTGCATTCAAGGTGATCCTGGCCATCCGGAGAGCTAAGAACCTCAGGCGGCTGCTGTACGTCTC
 ATGCAACCCCGGGCAGCCATGGGCAACTTTGTGGACCTTGCAGAGCCCATCTAACCGGTGAAGGGC
 ATTCCTTCCGGCCGGTCAAGGCTGTGGCAGTGGACCTGTCCCAGACCCCGACTGTGAGATGCTCA
 TCCTGTTTGGAGGGTGGAGCACCCCAATGGCACAGGGGTCTGGGGCCCAAGCCCTCCAGCTCAACC
 CACACCAGGACCCCAAGATAACACCCCTACAAGAACTGGGACCTTCCCCTCATCC

ACGCGTACGCGGCCGCTCGAGCAGAACTCATCTCAGAAGAGGATCTGGCAGCAAATGATATCCTGGATT
 ACAAGGATGACGACGATAAGGTTTAA

Protein Sequence:

>RC200966 protein sequence
 Red=Cloning site Green=Tags(s)

MSENLDNEGPKPMESCGQESSALSCPTVSVPPAAPAALEEEVEKEGAGAATGPGPQPGLYSYIRDDLFTS
 EIFKLELQNVPRHASFSDVRRFLGRFGLQPHKTKLFGQPPCAFVTFRCAAERDKALRVLHGALWGRPLS
 VRLARPKADPMARRRRQEGESEPPVTRVADVVTPLWTPVYAEQLERKQLECEQVLQKLAKEIGSTNRALL
 PWLLEQRHKHNAKCCPLEGVRPSPQQTETRNKCEFLVGVGVDGEDNTVGCRLGKYKGGTCAVAAPFDTVH
 IPEATKQVVKAFQEFIRSTPYSAYDPETYGHWKQLTVRTSRRHQAMAIYFHPQKLSPEELAEKLSLA
 QHFTAGPGRASGVTCLYFVEEQQRKTPSQEGLPLEHVAGDRCIHEDLLGLTFRISPHAFFQVNTPAEVL
 YTVIQDWAQLDAGSMVLVCCGTGTIGLALARKVKRIVGVELCPEAVEDARVNAQDNELSNVEFHCGRAE
 DLVPTLVSRASQHLVAILDPPRAGLHSHKVIILARRAKNLRLLYVSCNPRAAMGNFVDLCRAPSNRVKG
 IPFRPVKAVAVDLFPQTPHCEMLILFERVEHPNGTGVLGPHSPPAQPTPGPPDNTLQETGTFFSS

TRTRPLEQKLISEEDLAANDILDYKDDDDKV

Chromatograms: https://cdn.origene.com/chromatograms/mk6429_e12.zip

Restriction Sites: SgfI-MluI

Cloning Scheme:



ACCN: NM_182984

ORF Size: 1875 bp

OTI Disclaimer: The molecular sequence of this clone aligns with the gene accession number as a point of reference only. However, individual transcript sequences of the same gene can differ through naturally occurring variations (e.g. polymorphisms), each with its own valid existence. This clone is substantially in agreement with the reference, but a complete review of all prevailing variants is recommended prior to use. [More info](#)

OTI Annotation: This clone was engineered to express the complete ORF with an expression tag. Expression varies depending on the nature of the gene.

Components: The ORF clone is ion-exchange column purified and shipped in a 2D barcoded Matrix tube containing 10ug of transfection-ready, dried plasmid DNA (reconstitute with 100 ul of water).

- Reconstitution Method:**
1. Centrifuge at 5,000xg for 5min.
 2. Carefully open the tube and add 100ul of sterile water to dissolve the DNA.
 3. Close the tube and incubate for 10 minutes at room temperature.
 4. Briefly vortex the tube and then do a quick spin (less than 5000xg) to concentrate the liquid at the bottom.
 5. Store the suspended plasmid at -20°C. The DNA is stable for at least one year from date of shipping when stored at -20°C.

RefSeq: [NM_182984.5](#)

RefSeq Size: 2857 bp

RefSeq ORF: 1878 bp

Locus ID: 27037

UniProt ID: [Q8IZ69](#)

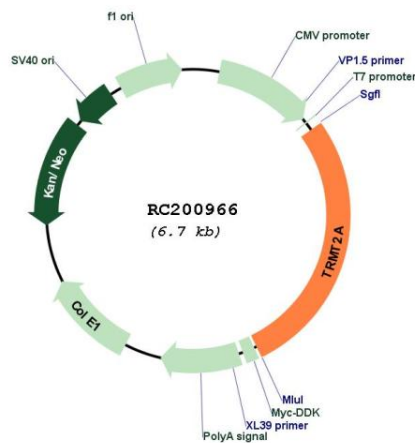
Cytogenetics: 22q11.21

Protein Families: Druggable Genome

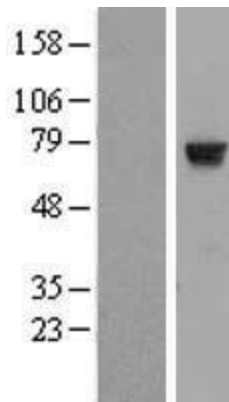
MW: 68.7 kDa

Gene Summary: The protein encoded by this gene is of unknown function. However, it is orthologous to the mouse Trmt2a gene and contains an RNA methyltransferase domain. Expression of this gene varies during the cell cycle, with aberrant expression being a possible biomarker in certain breast cancers. Several transcript variants encoding two different isoforms have been found for this gene. [provided by RefSeq, Apr 2012]

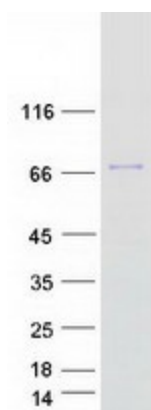
Product images:



Circular map for RC200966



Western blot validation of overexpression lysate (Cat# [LY411594]) using anti-DDK antibody (Cat# [TA50011-100]). Left: Cell lysates from untransfected HEK293T cells; Right: Cell lysates from HEK293T cells transfected with [RC221181] using transfection reagent MegaTran 2.0 (Cat# [TT210002]).



Coomassie blue staining of purified TRMT2A protein (Cat# [TP300966]). The protein was produced from HEK293T cells transfected with TRMT2A cDNA clone (Cat# RC200966) using MegaTran 2.0 (Cat# [TT210002]).