

Product datasheet for RC200965

TMEM51 (NM_018022) Human Tagged ORF Clone

Product data:

Product Type:	Expression Plasmids
Product Name:	TMEM51 (NM_018022) Human Tagged ORF Clone
Tag:	Myc-DDK
Symbol:	TMEM51
Synonyms:	C1orf72
Mammalian Cell Selection:	Neomycin
Vector:	pCMV6-Entry (PS100001)
E. coli Selection:	Kanamycin (25 ug/mL)
ORF Nucleotide Sequence:	>RC200965 ORF sequence Red=Cloning site Blue=ORF Green=Tags(s)

TTTTGTAATACGACTCACTATAGGGCGCCGGGAATTCGTCGACTGGATCCGGTACCGAGGAGATCTGCC
GCC**CGATCGCC**

ATGATGGCCAGTCCAAGGCCAATGGCTCGCACTATGCGCTGACCGCCATCGGCCTGGGGATGCTGGTCC
TTGGGGTGATCATGGCCATGTGGAACCTGGTACCCGGCTTCAGCGCGCCGAGAAGCCAACAGCTCAGGG
CAGCAACAAGACCGAGGTGGGTGGCGGCATCCTCAAGAGCAAGACCTTCTGTGGCCTACGTGCTGGTC
GGGGCCGGGTGATGCTGCTGCTTTTCTATCTGCCTGAGTATCAGGGATAAGAGGAAGCAGCGGCAGG
GCGAGGACCTGGCCATGTCCAGCACCCGACAGGCGCTGGGCCTCACGCCAGGAGGAAGACAGCCAGGA
GGAAGAAGAGGAGGATGAGGAGGCTGCCTCAAGTACTATGTTCCAGCTACGAGGAAGTATGAACACA
AACTACTCAGAAGCAAGGGGAGAGGAGCAGAACCCGAGTTGAGCATCTCTCTCCCGTCCATGAGTCAC
TGACGGGGCTCGACGAGACCACCCACATCCACCAGGGCTGACGTGGAGGCCAGCCCTGGGAACCCCC
TGACAGGCAGAACTCTAAGTTGGCCAAACGACTGAAACCACTGAAAGTTCGAAGGATTAATCTGAAAAG
CTTCACCTCAAAGACTTTAGGATCAACCTCCAGACAAAACGTCCTCCTCCCTCGATAGAGCCTTTGA
CTCCTCCACCGCAGTATGATGAAGTCCAGGAGAAGGCCCCCGACACCCGGCCGCCGAC

ACGCGTACGCGGCCGCTCGAGCAGAACTCATCTCAGAAGAGGATCTGGCAGCAAATGATATCCTGGATT
ACAAGGATGACGACGATAAGGTTTAA



[View online »](#)

Protein Sequence: >RC200965 protein sequence
Red=Cloning site Green=Tags(s)

MMAQSKANGSHYALTAIGLGMLVLGVIMAMWNLVPGFSAAEKPTAQGSNKTEVGGGILKSKTF SVAYVLV
 GAGVMLLLL SICLSIRDKRKQRQGEDLAHVQHPTGAGPHAQEEDSQEEEEDEEAASRYYYVPSYEEVMNT
 NYSEARGEEQNPRLSISLPSYESLTGLDETTPTSTRADVEASPGNPPDRQNSKLAKRLKPLKVRRIKSEK
 LHLKDFRINLPDKNVPPPSIEPLTPPPQYDEVQEKAPDTRPPD

TRTRPLEQKLISEEDLAANDILDYKDDDDKV

Chromatograms: https://cdn.origene.com/chromatograms/mk6399_g10.zip

Restriction Sites: SgfI-MluI

Cloning Scheme:



ACCN: NM_018022

ORF Size: 759 bp

OTI Disclaimer: The molecular sequence of this clone aligns with the gene accession number as a point of reference only. However, individual transcript sequences of the same gene can differ through naturally occurring variations (e.g. polymorphisms), each with its own valid existence. This clone is substantially in agreement with the reference, but a complete review of all prevailing variants is recommended prior to use. [More info](#)

OTI Annotation: This clone was engineered to express the complete ORF with an expression tag. Expression varies depending on the nature of the gene.

Components: The ORF clone is ion-exchange column purified and shipped in a 2D barcoded Matrix tube containing 10ug of transfection-ready, dried plasmid DNA (reconstitute with 100 ul of water).

Reconstitution Method:

1. Centrifuge at 5,000xg for 5min.
2. Carefully open the tube and add 100ul of sterile water to dissolve the DNA.
3. Close the tube and incubate for 10 minutes at room temperature.
4. Briefly vortex the tube and then do a quick spin (less than 5000xg) to concentrate the liquid at the bottom.
5. Store the suspended plasmid at -20°C. The DNA is stable for at least one year from date of shipping when stored at -20°C.

RefSeq: [NM_018022.3](#)

RefSeq Size: 1927 bp

RefSeq ORF: 762 bp

Locus ID: 55092

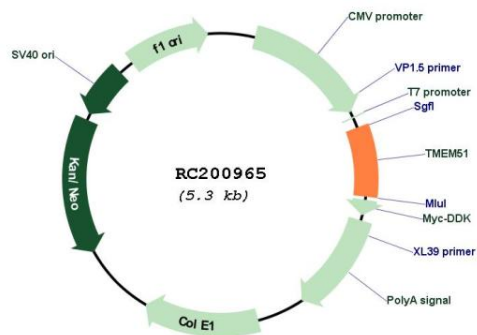
UniProt ID: [Q9NW97](#)

Cytogenetics: 1p36.21

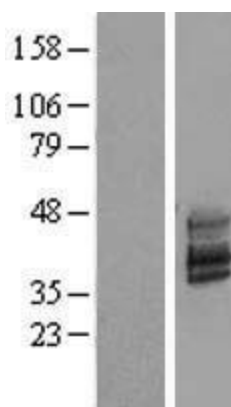
Protein Families: Transmembrane

MW: 27.8 kDa

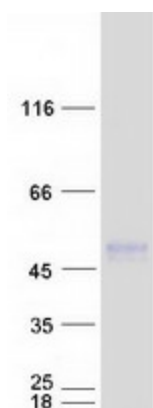
Product images:



Circular map for RC200965



Western blot validation of overexpression lysate (Cat# [LY413385]) using anti-DDK antibody (Cat# [TA50011-100]). Left: Cell lysates from untransfected HEK293T cells; Right: Cell lysates from HEK293T cells transfected with RC200965 using transfection reagent MegaTran 2.0 (Cat# [TT210002]).



Coomassie blue staining of purified TMEM51 protein (Cat# [TP300965]). The protein was produced from HEK293T cells transfected with TMEM51 cDNA clone (Cat# RC200965) using MegaTran 2.0 (Cat# [TT210002]).