

Product datasheet for **RC200962**

GGCT (NM_024051) Human Tagged ORF Clone

Product data:

Product Type: Expression Plasmids
Product Name: GGCT (NM_024051) Human Tagged ORF Clone
Tag: Myc-DDK
Symbol: GGCT
Synonyms: C7orf24; CRF21; GCTG; GGC
Mammalian Cell Selection: Neomycin
Vector: pCMV6-Entry (PS100001)
E. coli Selection: Kanamycin (25 ug/mL)
ORF Nucleotide Sequence: >RC200962 ORF sequence
 Red=Cloning site Blue=ORF Green=Tags(s)

TTTTGTAATACGACTCACTATAGGGCGGCCGGAATTCGTCGACTGGATCCGGTACCGAGGAGATCTGCC
 GCC**CGATCGCC**

ATGGCCAACCTCGGGCTGCAAGGACGTCACGGTCCAGATGAGGAGAGTTTTCTGTACTTTGCCTACGGCA
 GCAACCTGCTGACAGAGAGGATCCACCTCCGAAACCCCTCGGCGGCGTTCTTCTGTGTGGCCCGCTGCA
 GGATTTAAAGCTTGACTTTGGCAATCCCAAGGCAAAACAAGTCAAACCTGGCATGGAGGGATAGCCACC
 ATTTTTAGAGTCTGGCGATGAAGTGTGGGGAGTAGTATGAAAAATGAACAAAAGCAATTTAAATTCTC
 TGGATGAGCAAGAAGGGTTAAAAGTGAATGTATGTTGTAATAGAAGTTAAAGTTGCAACTCAAGAAGG
 AAAAGAAATAACCTGTGCAAGTTATCTGATGACAAATTACGAAAGTGCTCCCCATCCCCACAGTATAAA
 AAGATTATTTGCATGGGTGCAAAAGAAAATGGTTTGCCGCTGGAGTATCAAGAGAAGTTAAAAGCAATAG
 AACCAAATGACTATACAGGAAAGGTCTCAGAAGAAATTGAAGACATCATAAAAAGGGGGAAACACAAAC
 TCTT

ACGCGTACGCGGCCGCTCGAGCAGAAACTCATCTCAGAAGAGGATCTGGCAGCAATGATATCCTGGATT
 ACAAGGATGACGACGATAAGGTTTAA

Protein Sequence: >RC200962 protein sequence
 Red=Cloning site Green=Tags(s)

MANSGCKDVTGPDEESFLYFAYGSNLLTERIHLRNPSAAFFCVARLQDFKLDGNSQGKTSQTHGGIAT
 IFQSPGDEVWGVVWKMNSLNSLDEQEGVKSGMYVIVKQVATQEGKEITCRSYLMTNYESAPSPQYK
 KIICMGAKENGLPLEYQEKLKAIEPNDYTGKVSSEIEDI IKKGETQL

TRTRPLEQKLISEEDLAANDILDYKDDDDKV

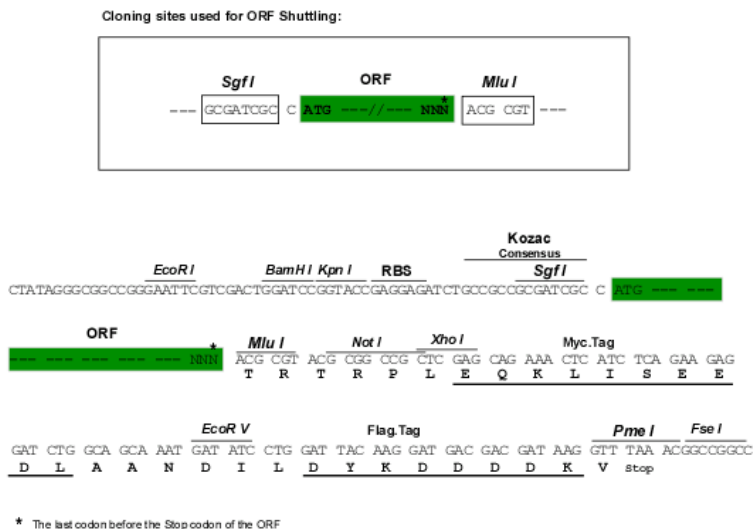


[View online »](#)

Chromatograms: https://cdn.origene.com/chromatograms/mk6387_h10.zip

Restriction Sites: SgfI-MluI

Cloning Scheme:



ACCN: NM_024051

ORF Size: 564 bp

OTI Disclaimer: The molecular sequence of this clone aligns with the gene accession number as a point of reference only. However, individual transcript sequences of the same gene can differ through naturally occurring variations (e.g. polymorphisms), each with its own valid existence. This clone is substantially in agreement with the reference, but a complete review of all prevailing variants is recommended prior to use. [More info](#)

OTI Annotation: This clone was engineered to express the complete ORF with an expression tag. Expression varies depending on the nature of the gene.

Components: The ORF clone is ion-exchange column purified and shipped in a 2D barcoded Matrix tube containing 10ug of transfection-ready, dried plasmid DNA (reconstitute with 100 ul of water).

Reconstitution Method:

1. Centrifuge at 5,000xg for 5min.
2. Carefully open the tube and add 100ul of sterile water to dissolve the DNA.
3. Close the tube and incubate for 10 minutes at room temperature.
4. Briefly vortex the tube and then do a quick spin (less than 5000xg) to concentrate the liquid at the bottom.
5. Store the suspended plasmid at -20°C. The DNA is stable for at least one year from date of shipping when stored at -20°C.

RefSeq: [NM_024051.4](#)

RefSeq Size: 1197 bp

RefSeq ORF: 567 bp

Locus ID: 79017

UniProt ID: [O75223](#)

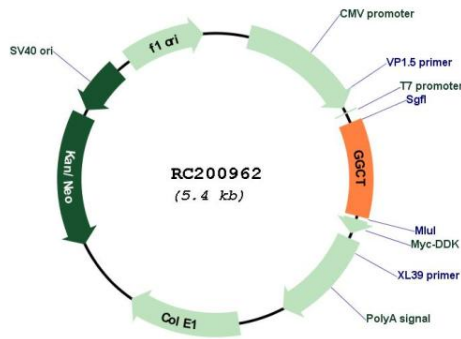
Cytogenetics: 7p14.3

Protein Pathways: Glutathione metabolism

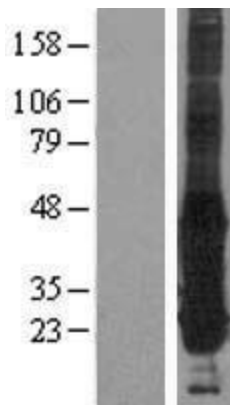
MW: 21 kDa

Gene Summary: The protein encoded by this gene catalyzes the formation of 5-oxoproline from gamma-glutamyl dipeptides, the penultimate step in glutathione catabolism, and may play a critical role in glutathione homeostasis. The encoded protein may also play a role in cell proliferation, and the expression of this gene is a potential marker for cancer. Pseudogenes of this gene are located on the long arm of chromosome 5 and the short arm of chromosomes 2 and 20. Alternatively spliced transcript variants encoding multiple isoforms have been observed for this gene. [provided by RefSeq, Dec 2010]

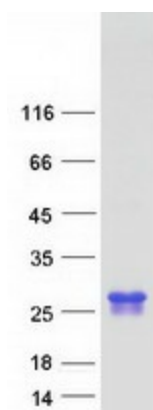
Product images:



Circular map for RC200962



Western blot validation of overexpression lysate (Cat# [LY411391]) using anti-DDK antibody (Cat# [TA50011-100]). Left: Cell lysates from untransfected HEK293T cells; Right: Cell lysates from HEK293T cells transfected with RC200962 using transfection reagent MegaTran 2.0 (Cat# [TT210002]).



Coomassie blue staining of purified GGCT protein (Cat# [TP300962]). The protein was produced from HEK293T cells transfected with GGCT cDNA clone (Cat# RC200962) using MegaTran 2.0 (Cat# [TT210002]).